

115°22'0"W



# Glover ID-NCF-000523 Infrared Map

Imagery Date: 9/17/2022 @ 2301 PDT  
IRIN: Elise Bowne  
Interpreted Acres: 319 Acres  
NAD83



46°8'0"N

N 01°38'30"

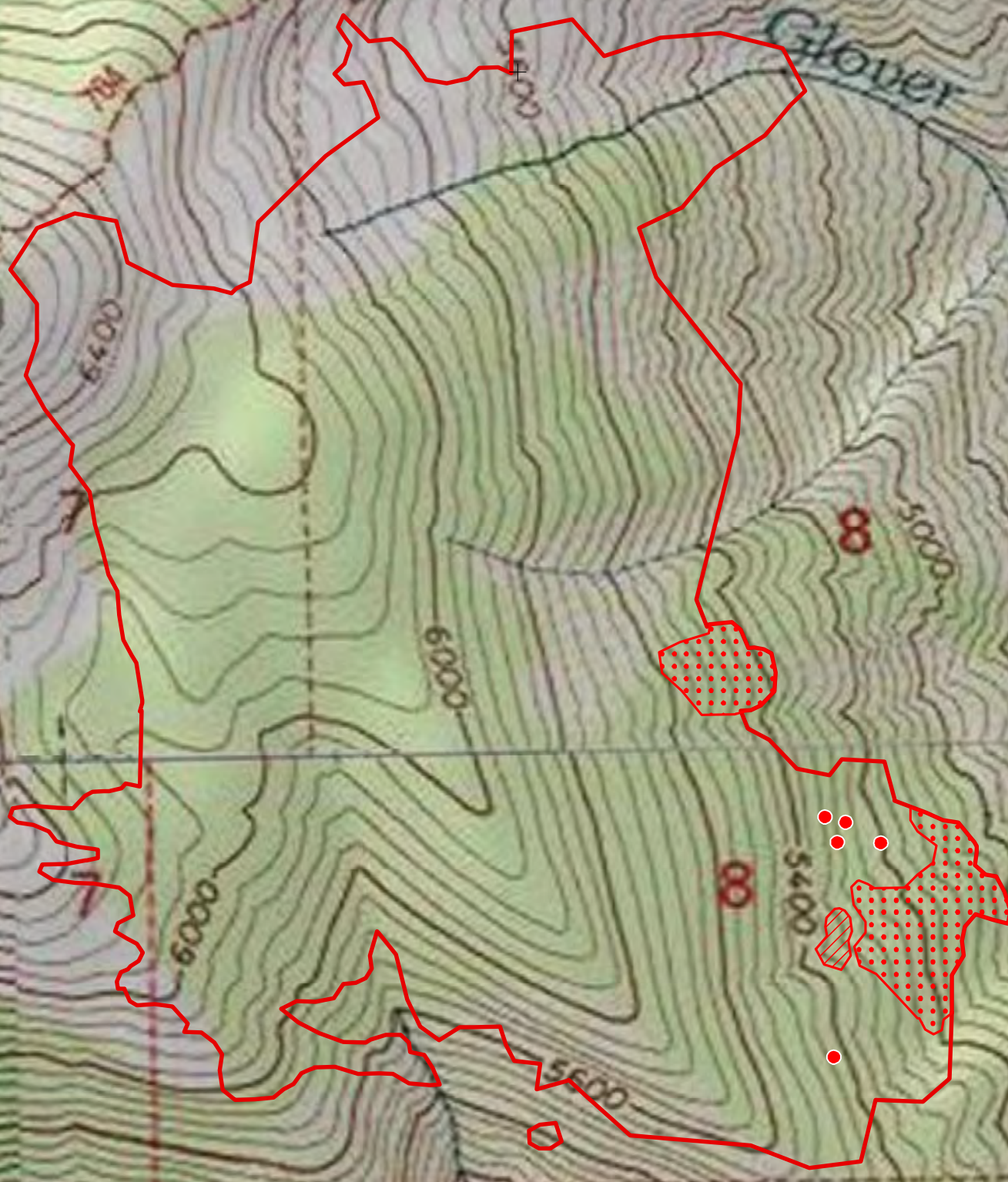
op  
ltn

46°7'0"N

N 01°49'

52°3'0"W

115°22'0"W



- IR Isolated Heat Source
- IR Heat Perimeter
- IR Intense Heat
- IR Scattered Heat

