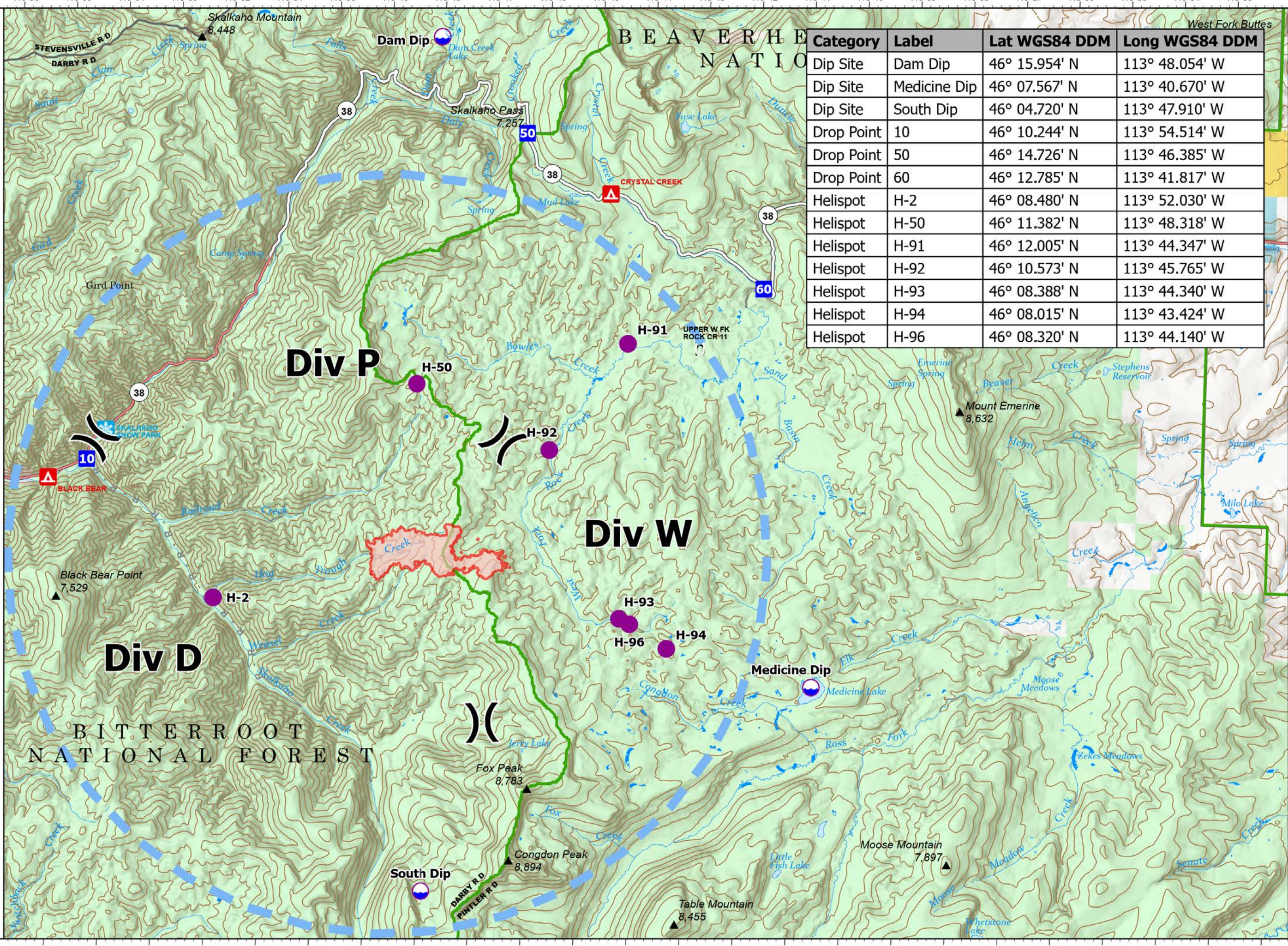


# Pilot Map

Hog Trough  
 MT-BRF-022161  
 587 acres  
 7/27/2022

-  Dip Site
-  Helispot
-  Division Break
-  Drop Point
-  Planned Road as Line
-  Temporary Flight Restriction
-  Daily Fire Perimeter

Category	Label	Lat WGS84 DDM	Long WGS84 DDM
Dip Site	Dam Dip	46° 15.954' N	113° 48.054' W
Dip Site	Medicine Dip	46° 07.567' N	113° 40.670' W
Dip Site	South Dip	46° 04.720' N	113° 47.910' W
Drop Point	10	46° 10.244' N	113° 54.514' W
Drop Point	50	46° 14.726' N	113° 46.385' W
Drop Point	60	46° 12.785' N	113° 41.817' W
Helispot	H-2	46° 08.480' N	113° 52.030' W
Helispot	H-50	46° 11.382' N	113° 48.318' W
Helispot	H-91	46° 12.005' N	113° 44.347' W
Helispot	H-92	46° 10.573' N	113° 45.765' W
Helispot	H-93	46° 08.388' N	113° 44.340' W
Helispot	H-94	46° 08.015' N	113° 43.424' W
Helispot	H-96	46° 08.320' N	113° 44.140' W



0 1 2  
 Miles  
 Scale: 1:85,000

Fire perimeter updated from Acres from IR on 7/26/22 2300

1 inch equals 16 miles

NIR Remote Incident Support  
 7/27/2022 0900  
 North American 1983  
 Datum: LatLong Grid