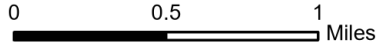


IAP

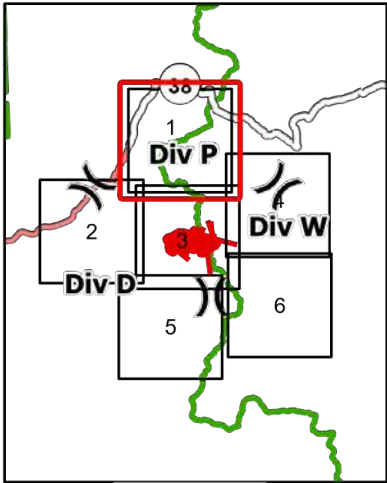
Hog Trough
MT-BRF-022161

7/29/2022

611 acres at 7/28/22 2230
Acres from IR



- Helispot
- Drop Point
- Ⓜ Value at Risk
- Completed Road as Line
- Planned Secondary Line
- Temporary Flight Restriction
- USFS Wilderness Study Area Boundary
- Dirt Road
- Unimproved Road
- Motorized Trail
- Dirt (Not Paved)

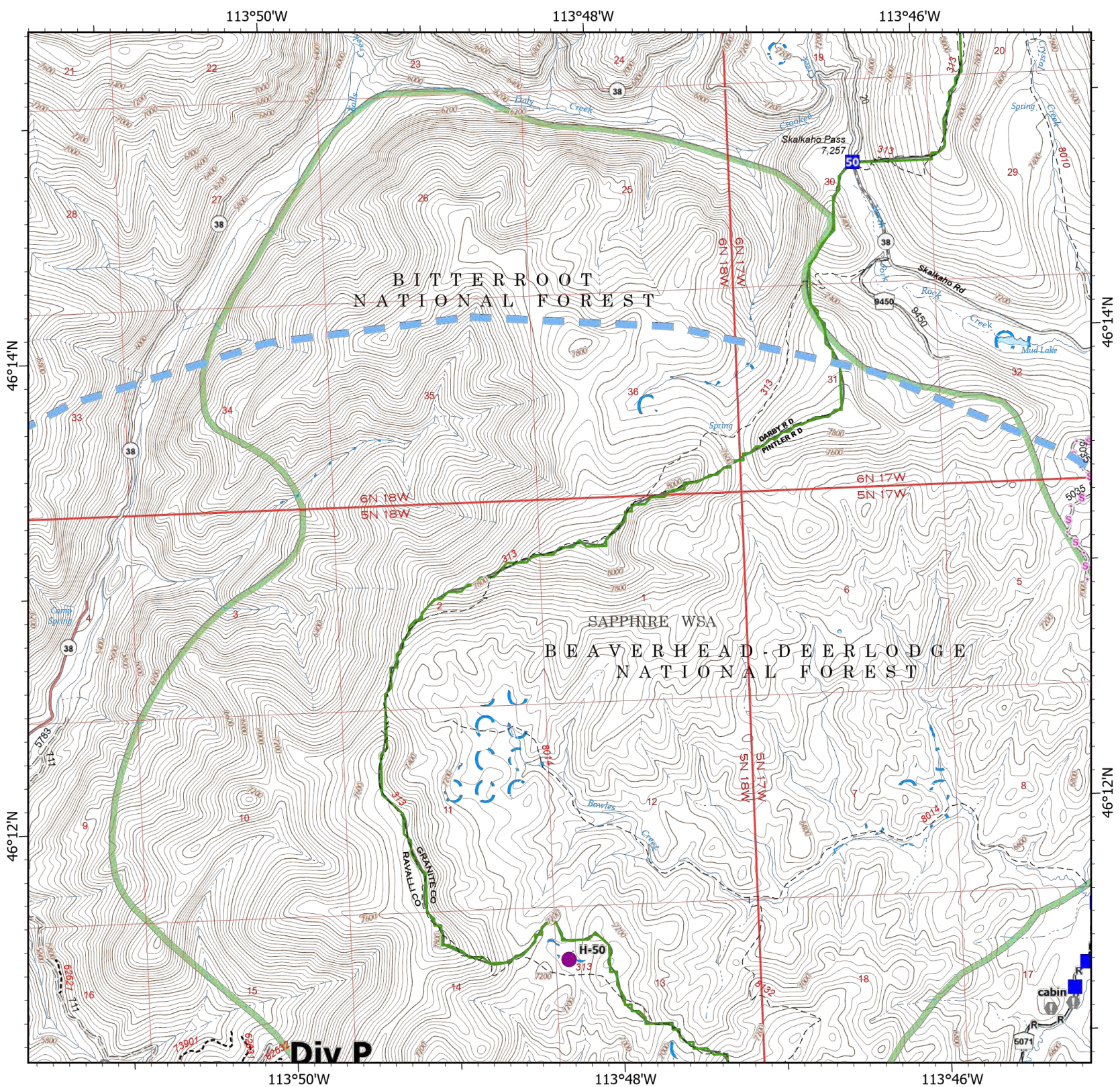


Scale: 1:40,000

Page 1 of 6



7/29/2022 0510
North American 1983 Datum. Lat/Long Grid

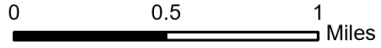


IAP

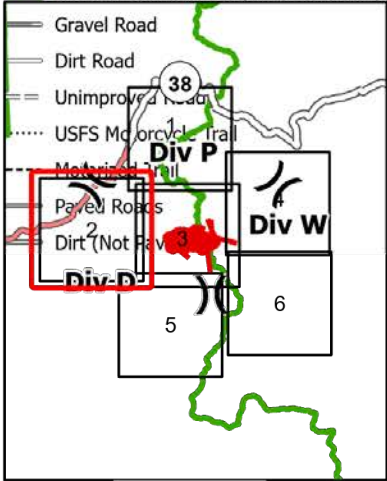
Hog Trough MT-BRF-022161

7/29/2022

611 acres at 7/28/22 2230
Acres from IR



- Helispot
- Division Break
- Drop Point
- Value at Risk
- Water Development or Draft Site
- Road Repair
- Landing or Log Deck
- Completed Fuel Break
- Completed Road as Line
- Planned Road as Line
- Temporary Flight Restriction
- USFS Wilderness Study Area Boundary

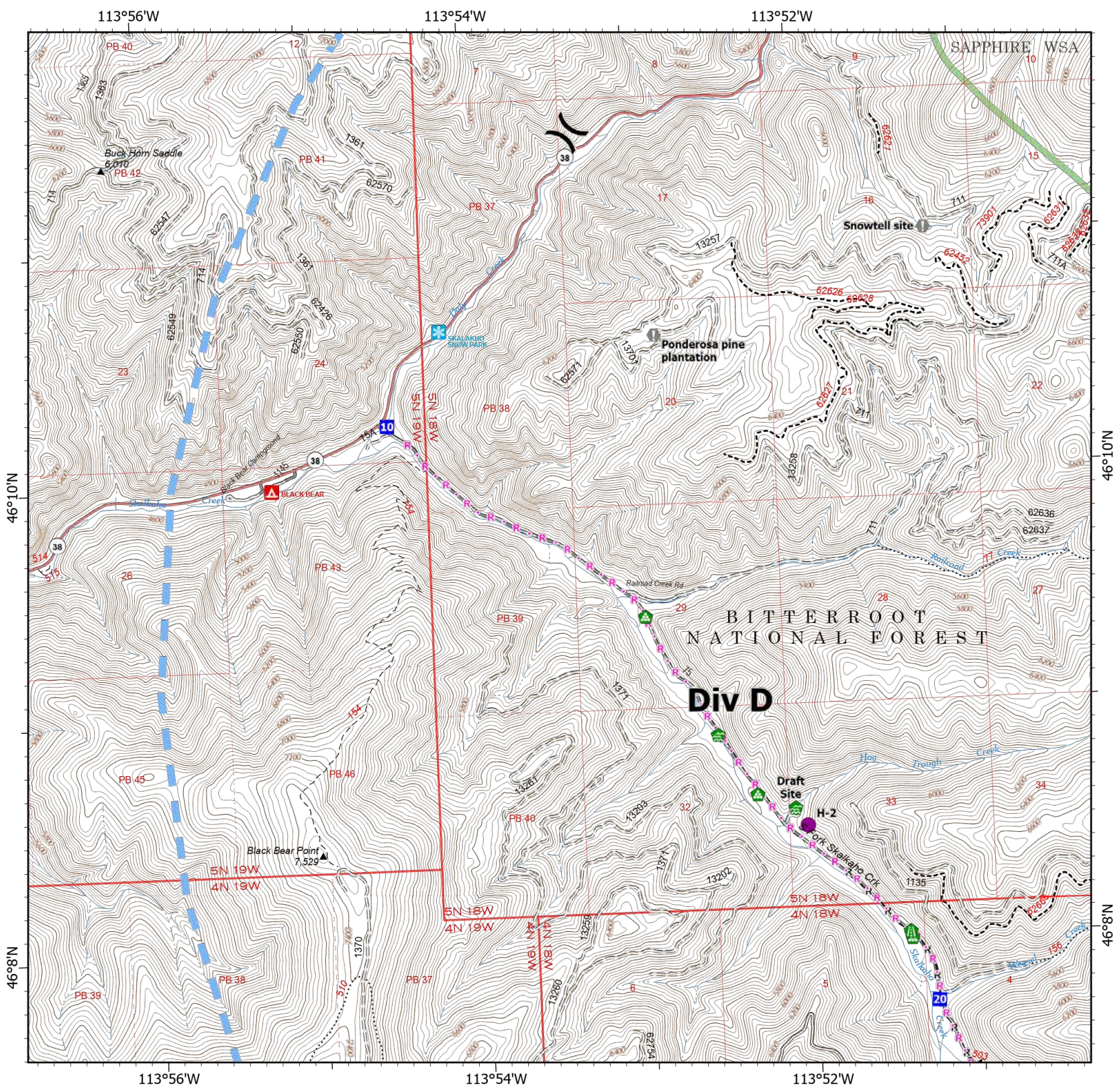


Scale: 1:40,000

Page 2 of 6



7/29/2022 0510
North American 1983 Datum. Lat/Long Grid

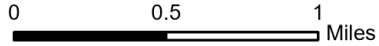


IAP

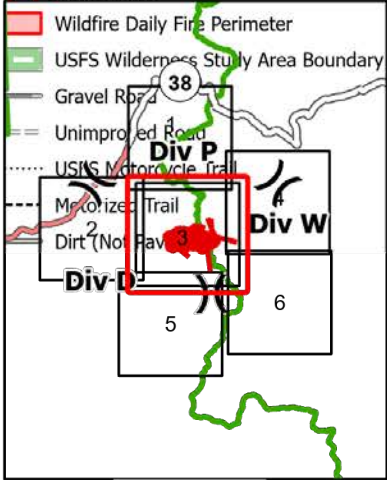
Hog Trough MT-BRF-022161

7/29/2022

611 acres at 7/28/22 2230
Acres from IR



- Helispot
- Drop Point
- ⓘ Value at Risk
- 🏠 Water Development or Draft Site
- 🛠️ Road Repair
- 🌲 Landing or Log Deck
- ▬▬▬ Completed Fuel Break
- Completed Road as Line
- ▬▬▬ Planned Fuel Break
- Planned Road as Line
- - - Planned Secondary Line
- Uncontained

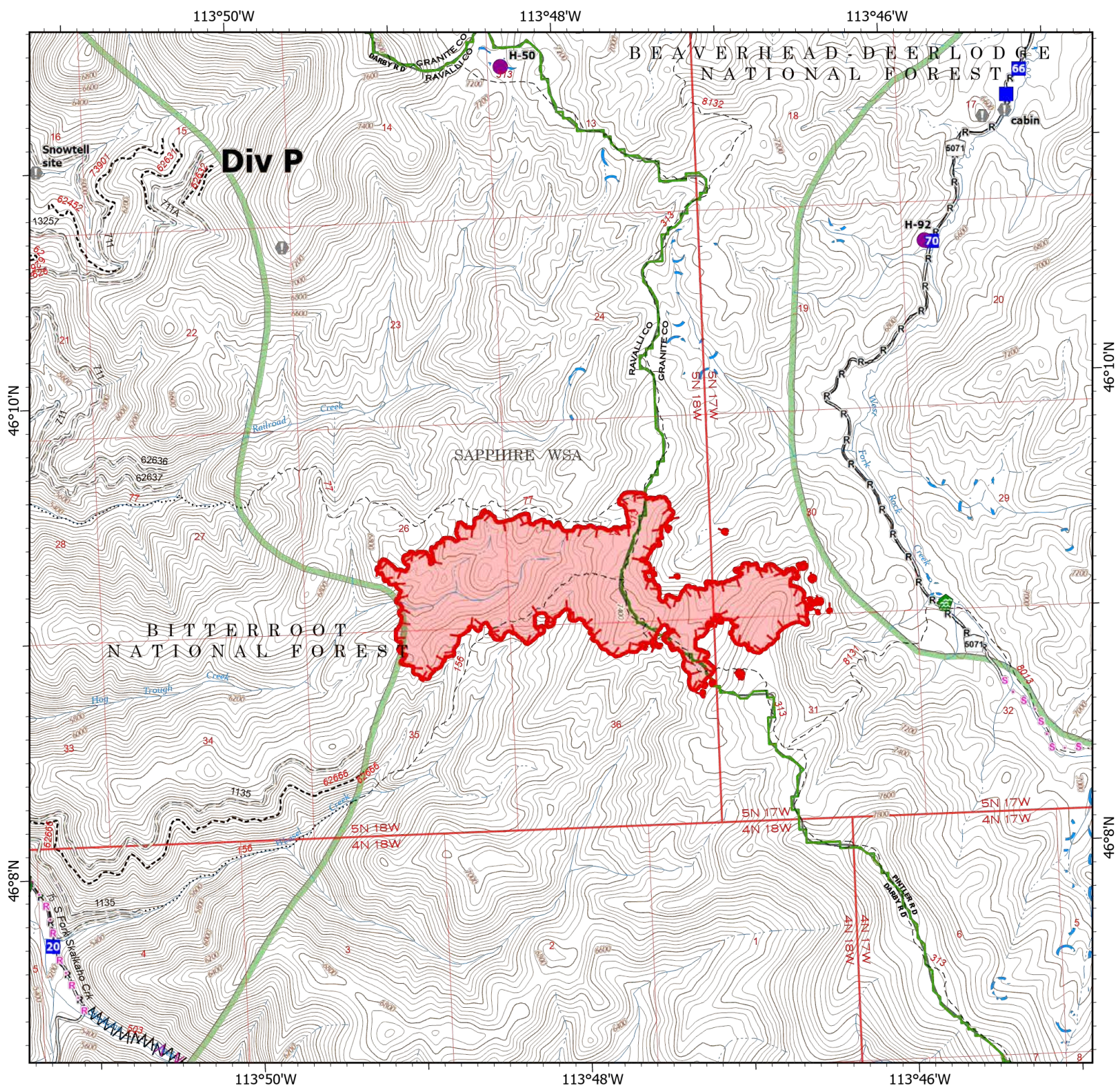


Scale: 1:40,000

Page 3 of 6



7/29/2022 0510
North American 1983 Datum. Lat/Long Grid



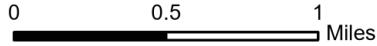
IAP

Hog Trough

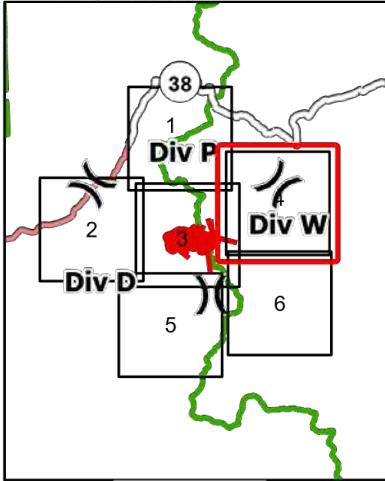
MT-BRF-022161

7/29/2022

611 acres at 7/28/22 2230
Acres from IR



- Helispot
-) Division Break
- Drop Point
- Value at Risk
- Water Development or Draft Site
- Completed Road as Line
- S Planned Secondary Line
- Temporary Flight Restriction
- USFS Wilderness Study Area Boundary
- Gravel Road
- = Unimproved Road
- Dirt (Not Paved)

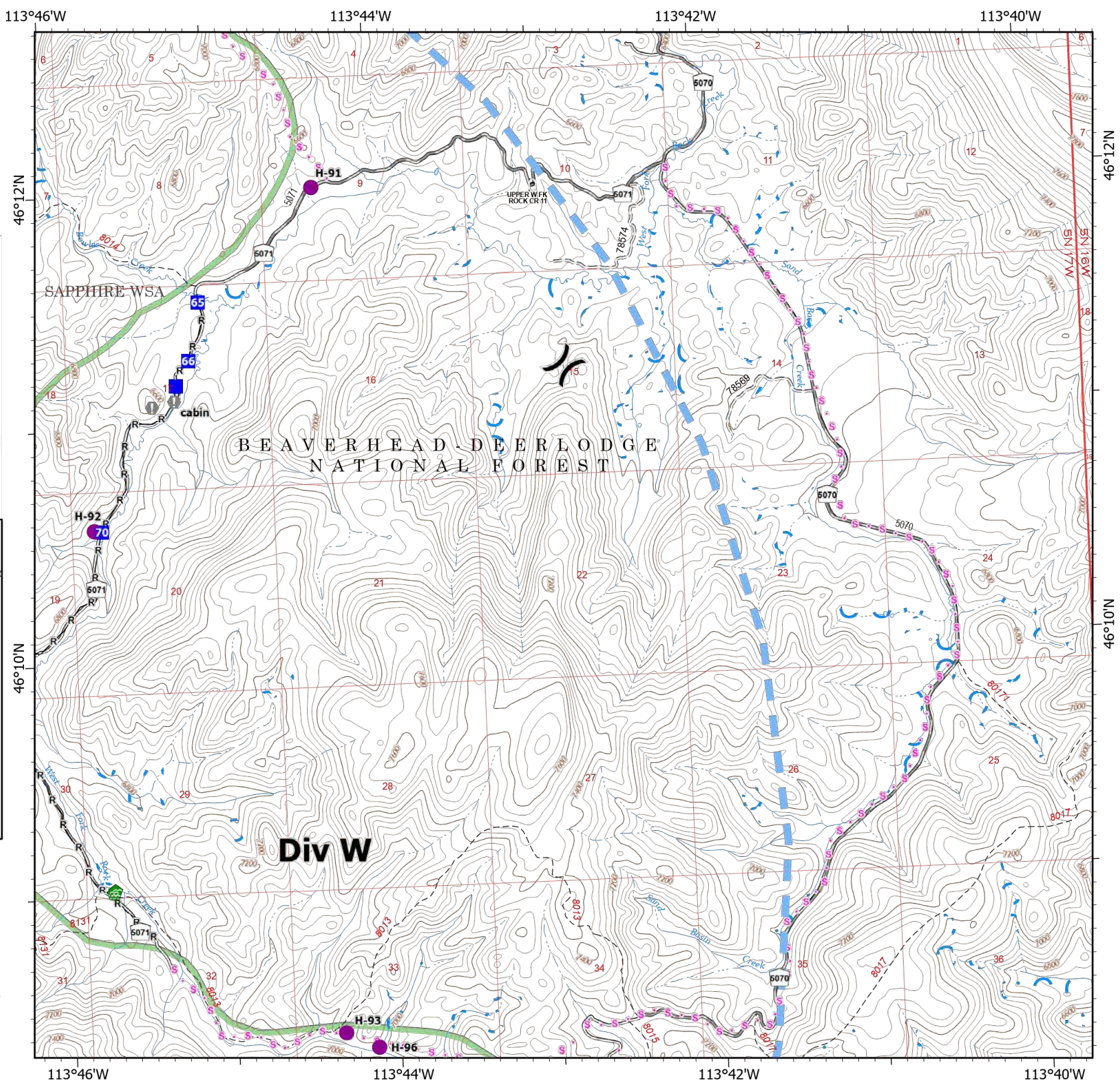


Scale: 1:40,000

Page 4 of 6



7/29/2022 0510
North American 1983 Datum. Lat/Long Grid



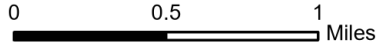
IAP

Hog Trough

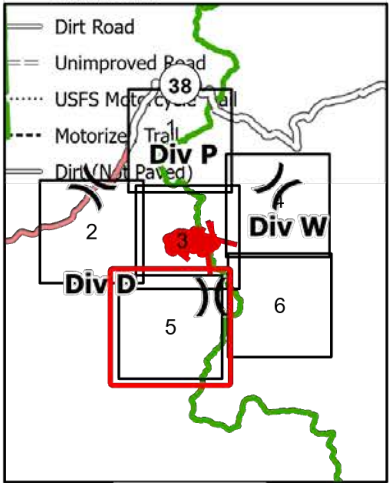
MT-BRF-022161

7/29/2022

611 acres at 7/28/22 2230
Acres from IR



- Dip Site
- Division Break
- Drop Point
- Road Repair
- Landing or Log Deck
- Completed Fuel Break
- Completed Road as Line
- Planned Fuel Break
- Planned Road as Line
- Temporary Flight Restriction
- USFS Wilderness Study Area Boundary
- Gravel Road

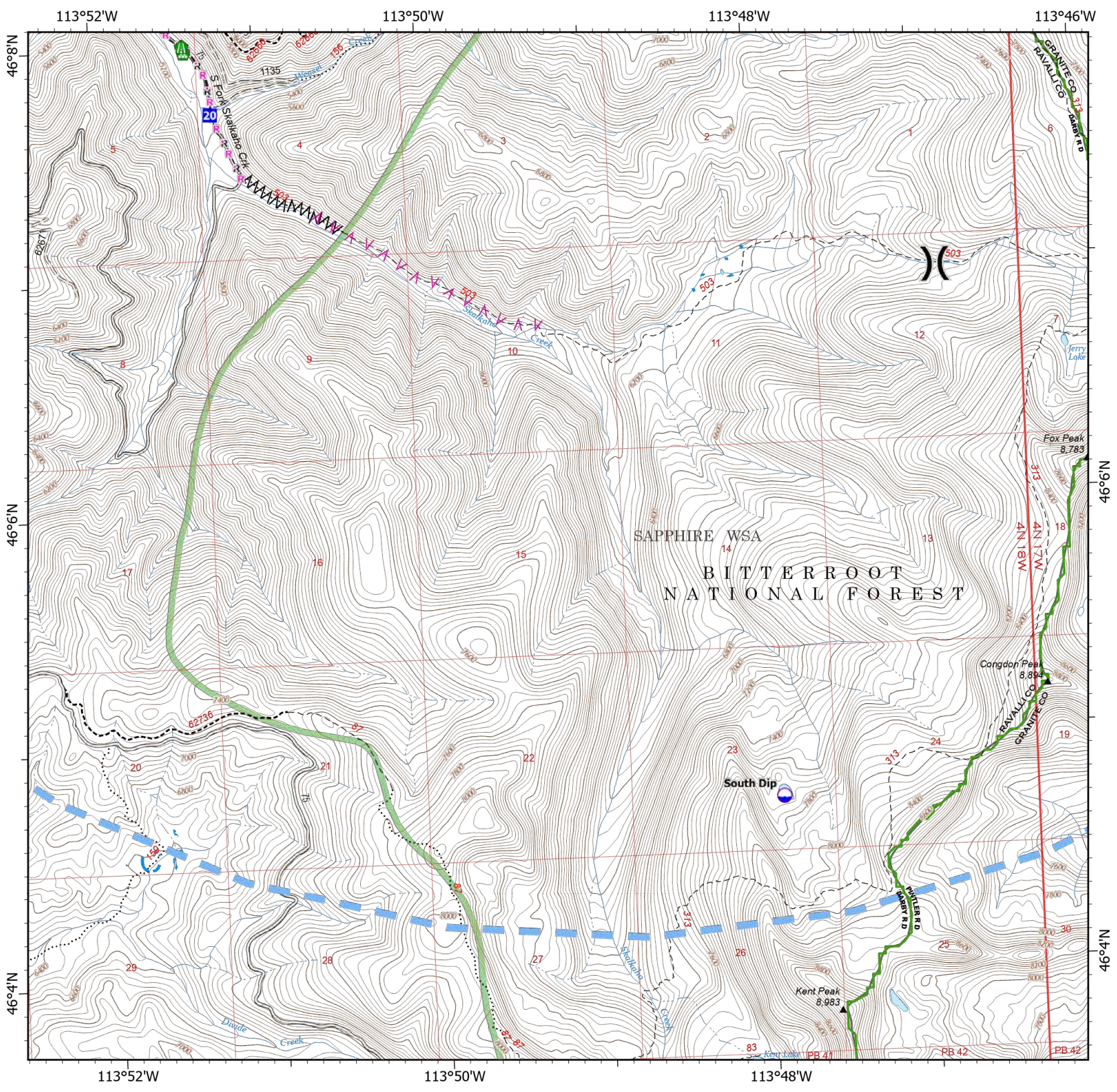


Scale: 1:40,000

Page 5 of 6



7/29/2022 0510
North American 1983 Datum. Lat/Long Grid



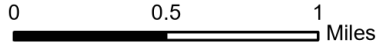
IAP

Hog Trough

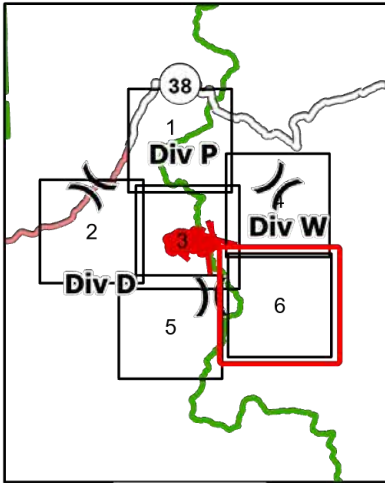
MT-BRF-022161

7/29/2022

611 acres at 7/28/22 2230
Acres from IR



- Dip Site
- Helispot
- Planned Secondary Line
- Temporary Flight Restriction
- USFS Wilderness Study Area Boundary
- Gravel Road
- Unimproved Road
- Dirt (Not Paved)



Scale: 1:40,000

Page 6 of 6



7/29/2022 0511
North American 1983 Datum. Lat/Long Grid

