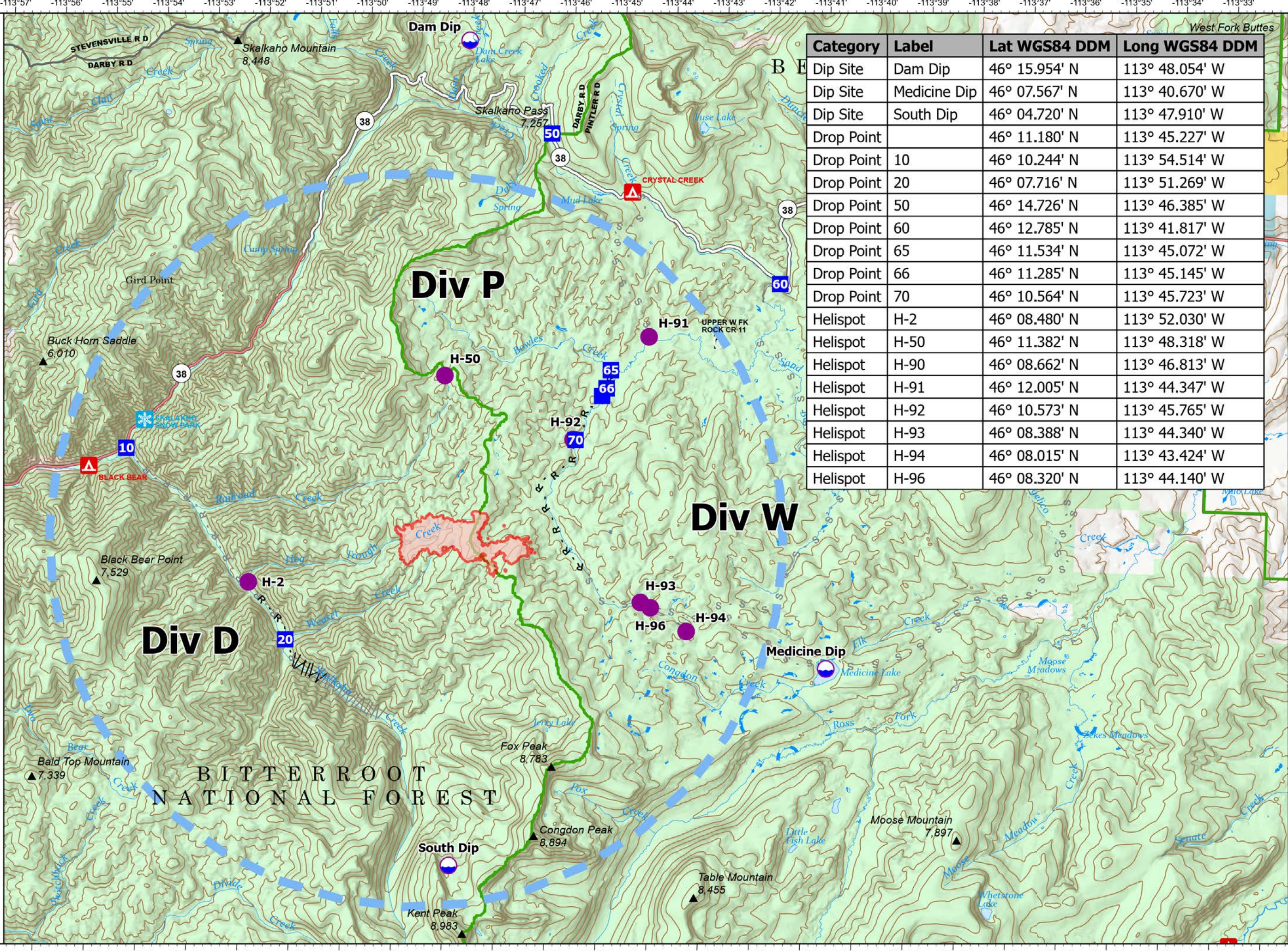


Pilot Map

Hog Trough
 MT-BRF-022161
 611 acres
 7/29/2022

-  Dip Site
-  Helispot
-  Drop Point
-  Completed Fuel Break
-  Completed Road as Line
-  Planned Fuel Break
-  Planned Road as Line
-  Planned Secondary Line
-  Temporary Flight Restriction
-  Daily Fire Perimeter

Category	Label	Lat WGS84 DDM	Long WGS84 DDM
Dip Site	Dam Dip	46° 15.954' N	113° 48.054' W
Dip Site	Medicine Dip	46° 07.567' N	113° 40.670' W
Dip Site	South Dip	46° 04.720' N	113° 47.910' W
Drop Point		46° 11.180' N	113° 45.227' W
Drop Point	10	46° 10.244' N	113° 54.514' W
Drop Point	20	46° 07.716' N	113° 51.269' W
Drop Point	50	46° 14.726' N	113° 46.385' W
Drop Point	60	46° 12.785' N	113° 41.817' W
Drop Point	65	46° 11.534' N	113° 45.072' W
Drop Point	66	46° 11.285' N	113° 45.145' W
Drop Point	70	46° 10.564' N	113° 45.723' W
Helispot	H-2	46° 08.480' N	113° 52.030' W
Helispot	H-50	46° 11.382' N	113° 48.318' W
Helispot	H-90	46° 08.662' N	113° 46.813' W
Helispot	H-91	46° 12.005' N	113° 44.347' W
Helispot	H-92	46° 10.573' N	113° 45.765' W
Helispot	H-93	46° 08.388' N	113° 44.340' W
Helispot	H-94	46° 08.015' N	113° 43.424' W
Helispot	H-96	46° 08.320' N	113° 44.140' W



Fire perimeter updated from Acres from IR on 7/28/22 2230

0 1 2 Miles

Scale: 1:88,000

1 inch equals 17 miles

NIR Remote Incident Support
 7/29/2022 0449
 North American 1983
 Datum: Lat/Long Grid