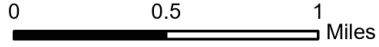


IAP

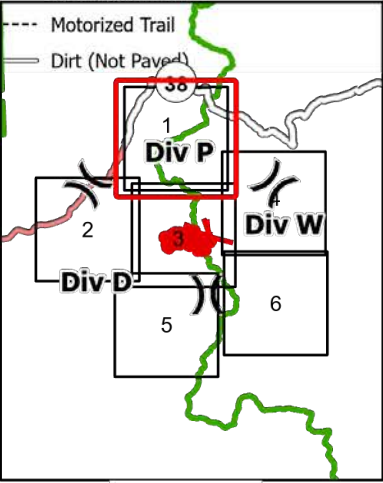
Hog Trough
MT-BRF-022161

7/30/2022

635 acres at 7/29/22 2257
Acres from IR



- Helispot
- Drop Point
- Ⓜ Value at Risk
- Completed Mixed Construction Line
- Completed Road as Line
- H • Planned Hand Line
- M • Planned Mixed Construction Line
- S • Planned Secondary Line
- Temporary Flight Restriction
- USFS Wilderness Study Area Boundary
- Dirt Road
- Unimproved Road
- Motorized Trail
- Dirt (Not Paved)

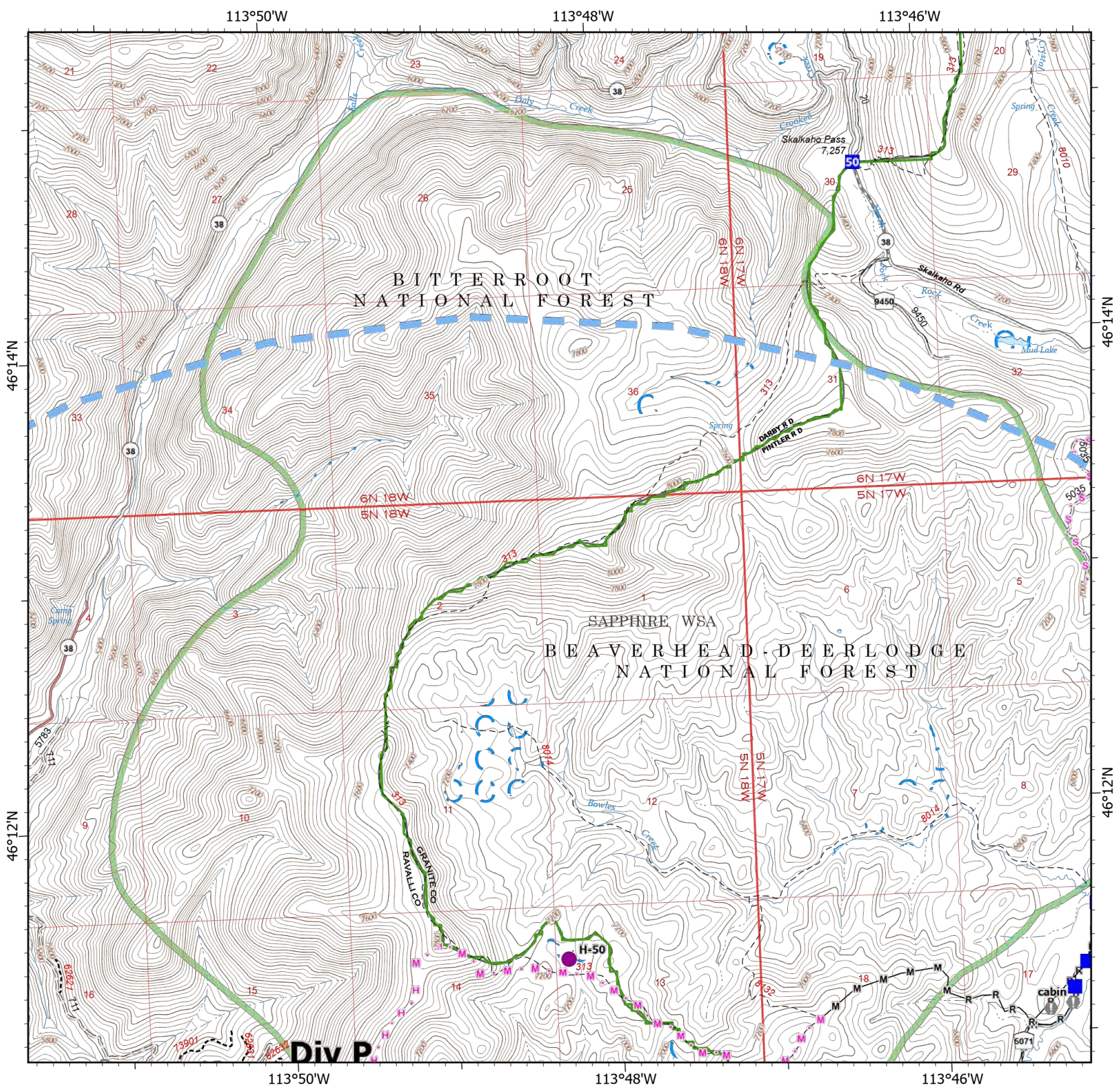


Scale: 1:40,000

Page 1 of 6



7/30/2022 0500
North American 1983 Datum. Lat/Long Grid

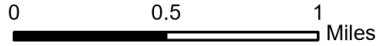


IAP

Hog Trough MT-BRF-022161

7/30/2022

635 acres at 7/29/22 2257
Acres from IR



- Helispot
 -) Division Break
 - Drop Point
 - Value at Risk
 - Landmark
 - Water Development or Draft Site
 - Road Repair
 - Landing or Log Deck
 - Completed Fuel Break
 - Completed Hand Line
 - Completed Road as Line
 - ^ Planned Fuel Break
 - ^ Planned Hand Line
 - ^ Planned Road as Line
 - Temporary Fire Restriction
 - USFS Wilderness Study Boundary
- Inset Map:**

 - Div P
 - Div W
 - Div D
- Motorized Trail
 - Paved Roads
 - Dirt (Not Paved)

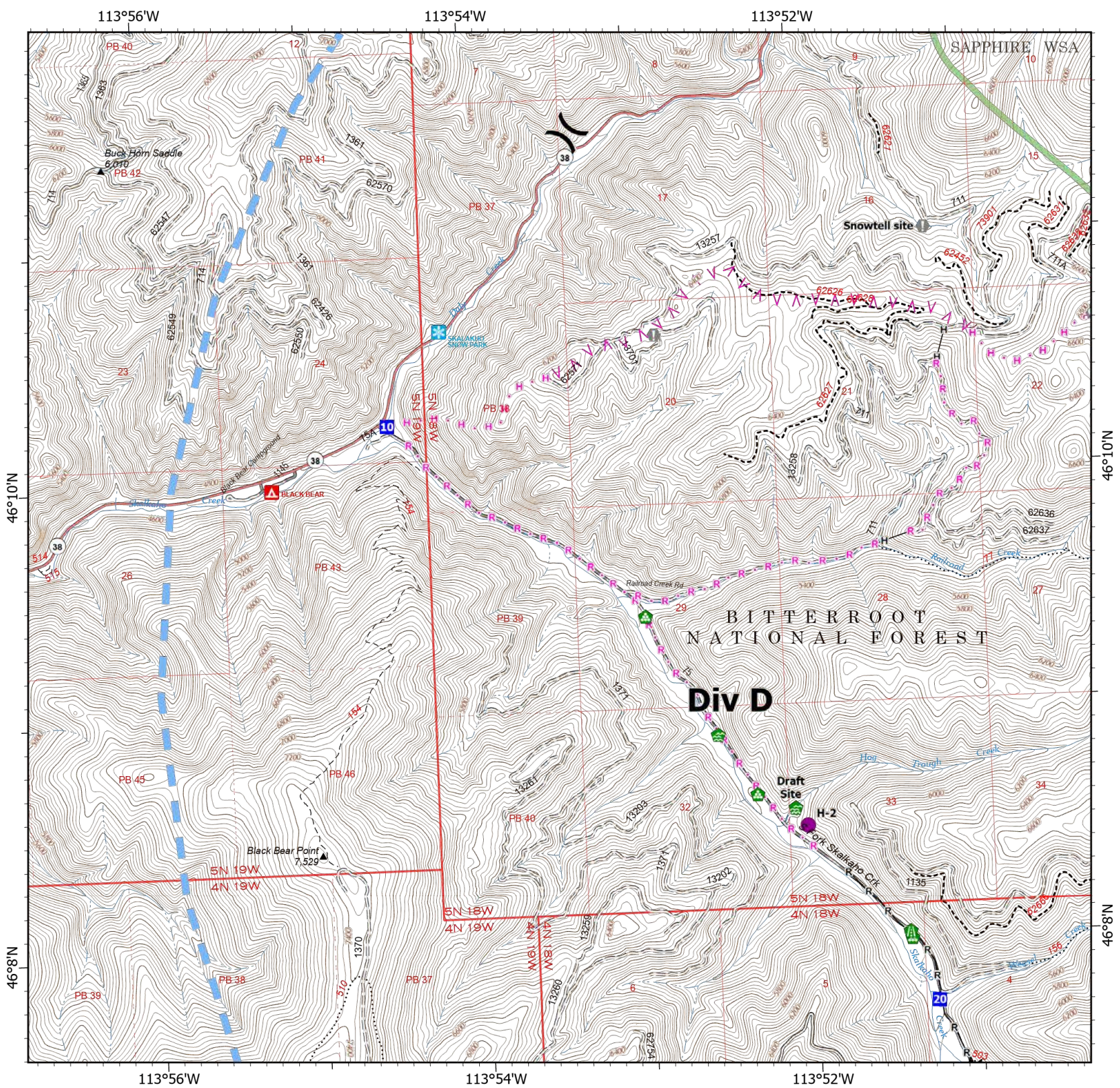


Scale: 1:40,000

Page 2 of 6



7/30/2022 0500
North American 1983 Datum. Lat/Long Grid

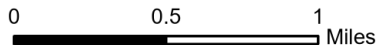


IAP

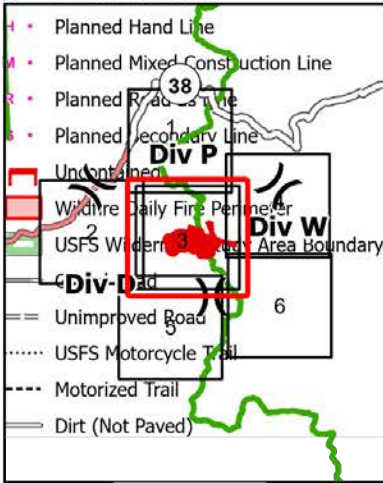
Hog Trough MT-BRF-022161

7/30/2022

635 acres at 7/29/22 2257
Acres from IR



- Helispot
- Drop Point
- Value at Risk
- Landmark
- Water Development or Draft Site
- Road Repair
- Landing or Log Deck
- Completed Fuel Break
- Completed Hand Line
- Completed Mixed Construction Line
- Completed Road as Line
- Planned Fuel Break
- Planned Hand Line
- Planned Mixed Construction Line
- Planned Road as Line
- Planned Secondary Line
- Uncontainment
- Wildfire Daily Fire Perimeter
- USFS Wildland Fire Area Boundary
- Unimproved Road
- USFS Motorcycle Trail
- Motorized Trail
- Dirt (Not Paved)

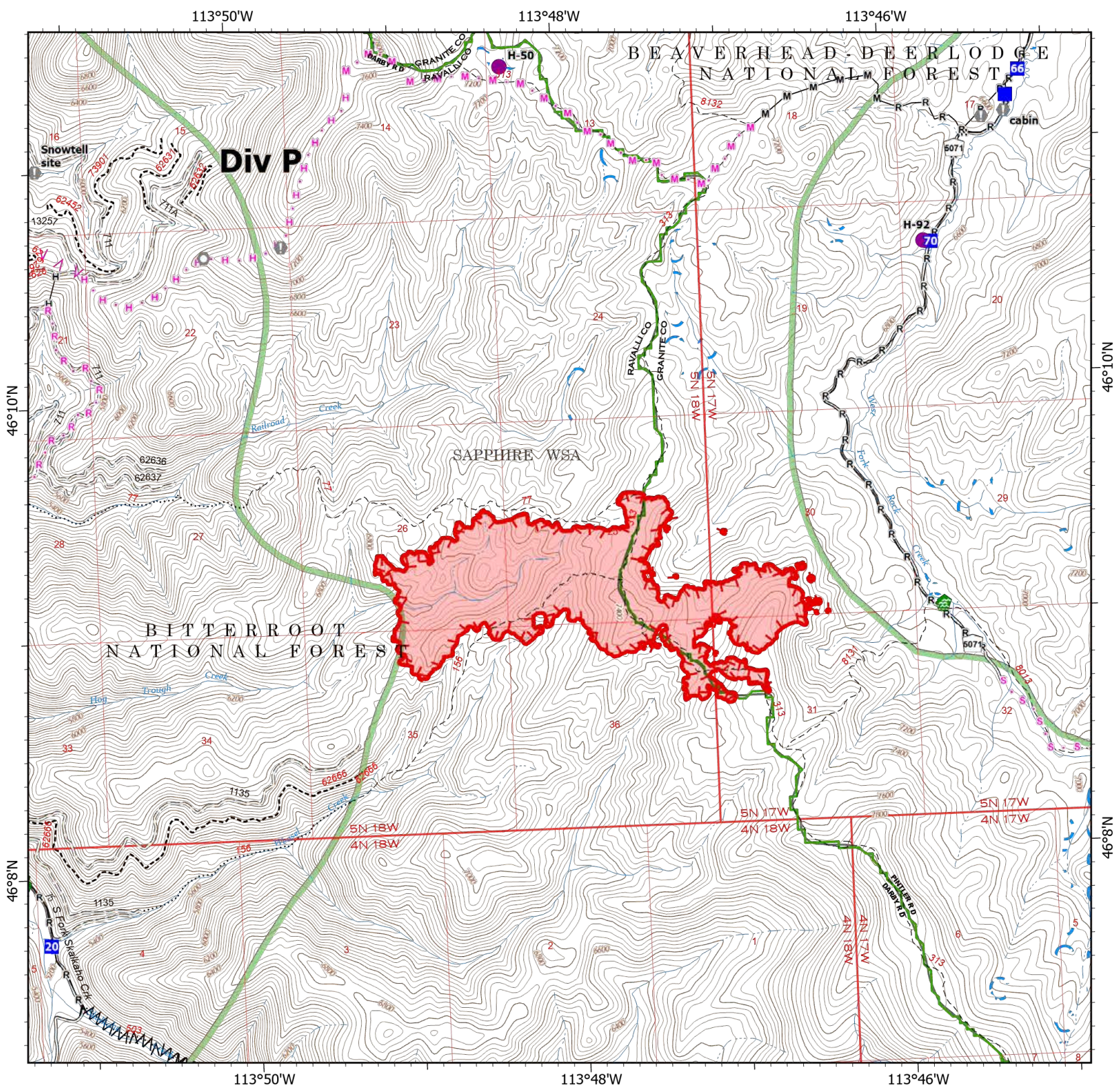


Scale: 1:40,000

Page 3 of 6



7/30/2022 0500
North American 1983 Datum. Lat/Long Grid



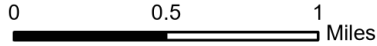
IAP

Hog Trough

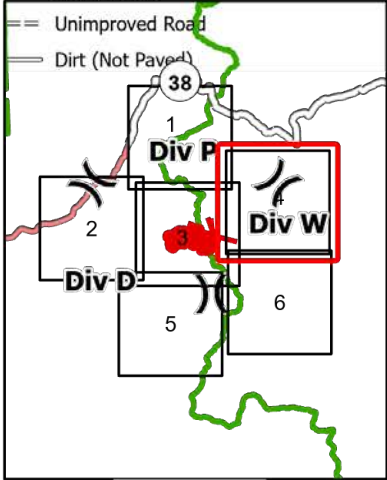
MT-BRF-022161

7/30/2022

635 acres at 7/29/22 2257
Acres from IR



- Helispot
-) Division Break
- Drop Point
- Value at Risk
- Water Development or Draft Site
- Completed Mixed Construction Line
- Completed Road as Line
- ✕ Planned Dozer Line
- s Planned Secondary Line
- Temporary Flight Restriction
- USFS Wilderness Study Area Boundary
- Gravel Road

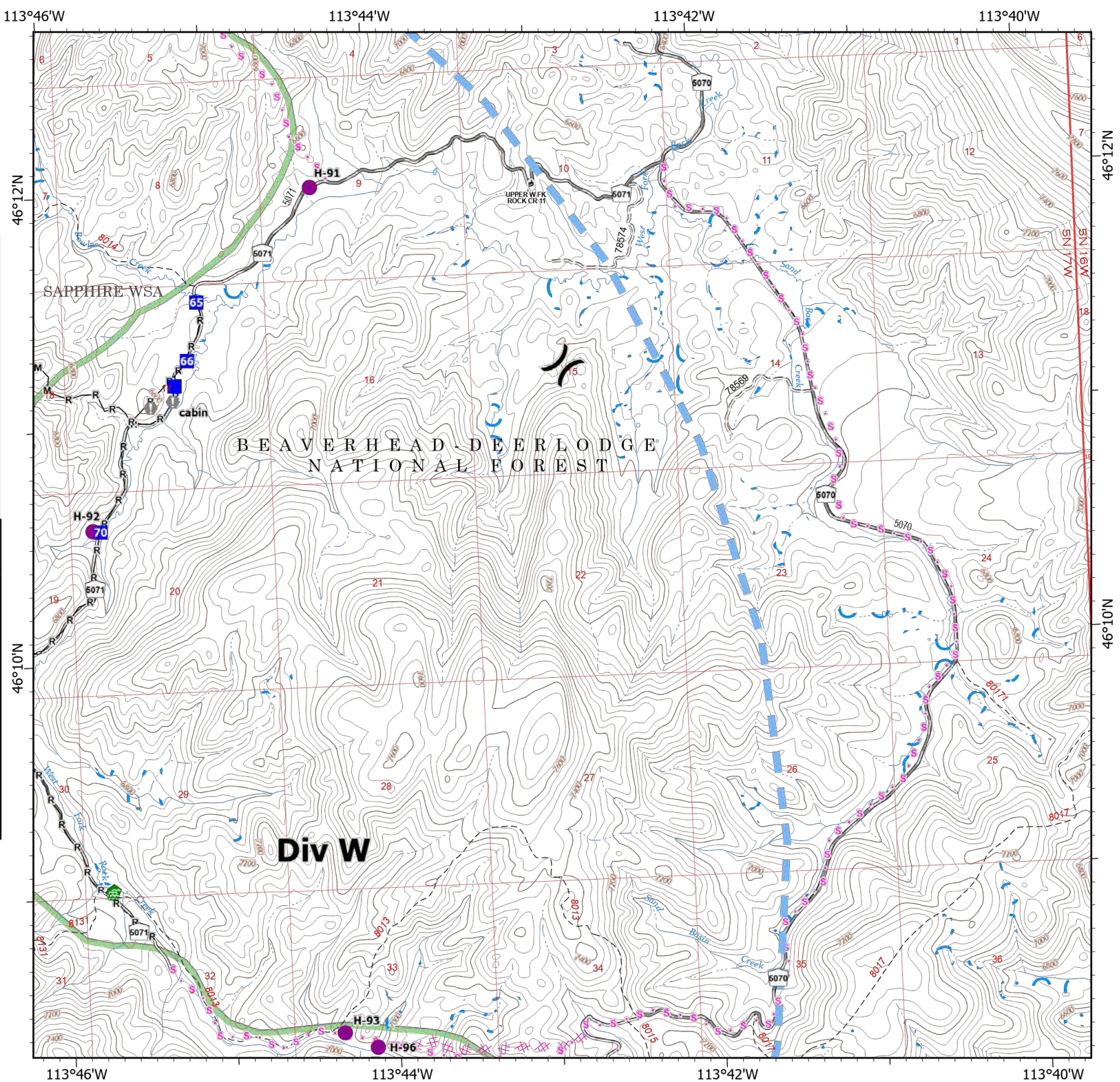


Scale: 1:40,000

Page 4 of 6



7/30/2022 0500
North American 1983 Datum. Lat/Long Grid



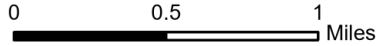
IAP

Hog Trough

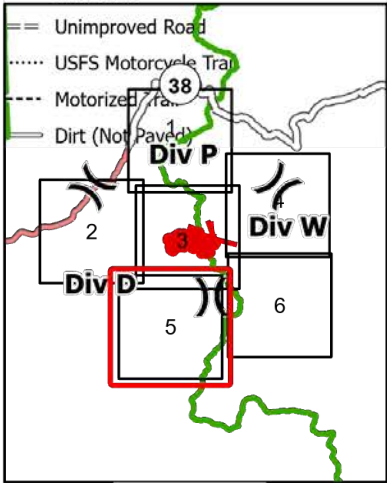
MT-BRF-022161

7/30/2022

635 acres at 7/29/22 2257
Acres from IR



- Dip Site
- Division Break
- Drop Point
- Road Repair
- Landing or Log Deck
- Completed Fuel Break
- Completed Road as Line
- Planned Fuel Break
- Temporary Flight Restriction
- USFS Wilderness Study Area Boundary
- Gravel Road
- Dirt Road

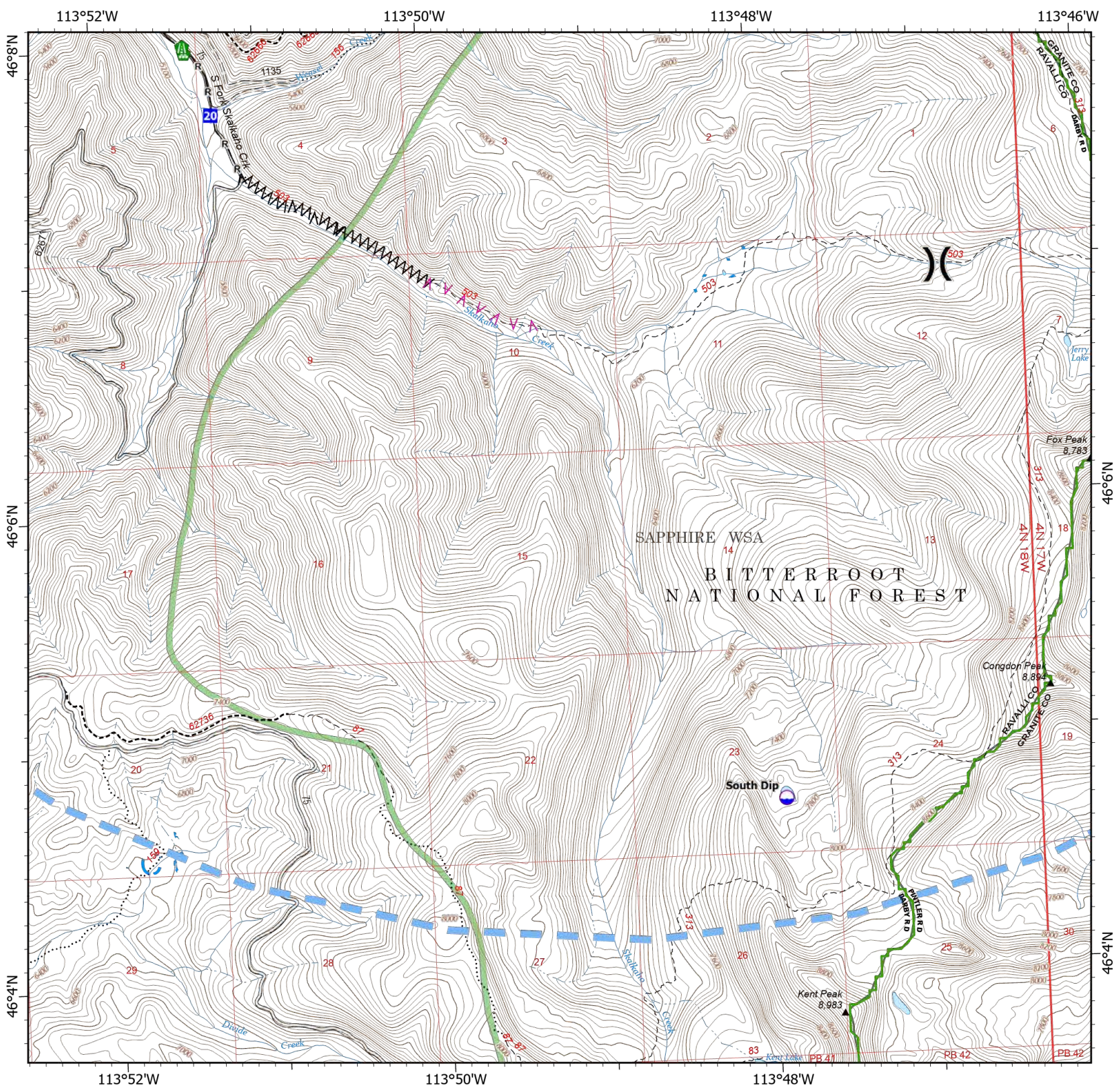


Scale: 1:40,000

Page 5 of 6



7/30/2022 0500
North American 1983 Datum. Lat/Long Grid



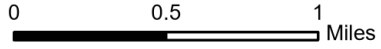
IAP

Hog Trough

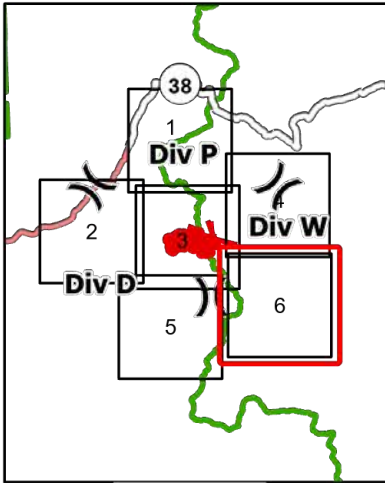
MT-BRF-022161

7/30/2022

635 acres at 7/29/22 2257
Acres from IR



- Dip Site
- Helispot
- Planned Dozer Line
- Planned Secondary Line
- Temporary Flight Restriction
- USFS Wilderness Study Area Boundary
- Gravel Road
- Unimproved Road
- Dirt (Not Paved)



Scale: 1:40,000

Page 6 of 6



7/30/2022 0500
North American 1983 Datum. Lat/Long Grid

