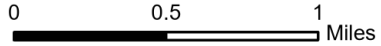


# IAP

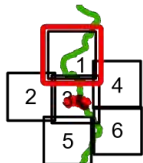
Hog Trough  
MT-BRF-022161

7/31/2022

672 acres at 7/30/22 2231  
Acres from IR

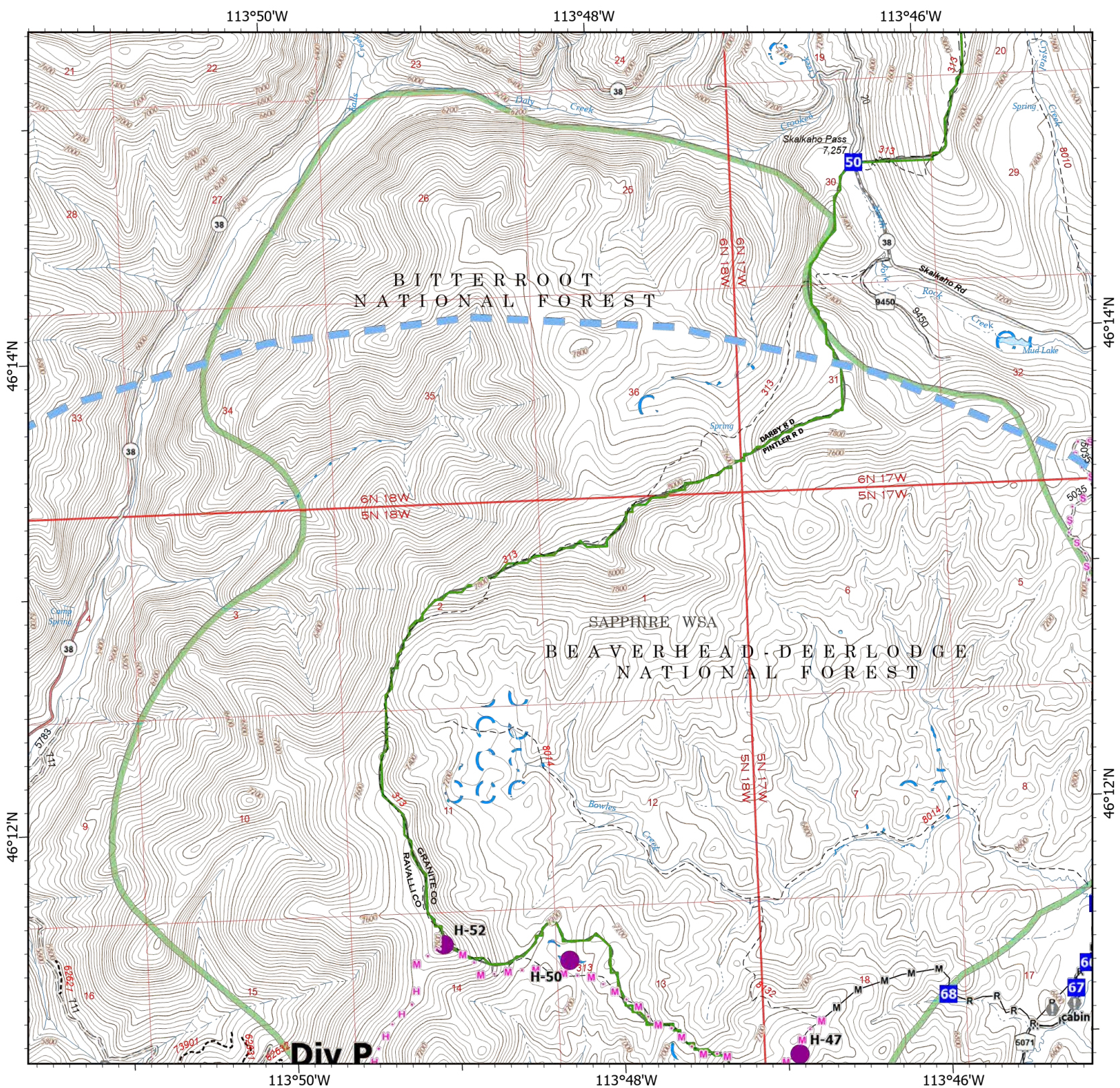


- Helispot
- Drop Point
- ⊕ Value at Risk
- M— Completed Mixed Construction Line
- R— Completed Road as Line
- H • Planned Hand Line
- M • Planned Mixed Construction Line
- S • Planned Secondary Line
- ▭ Temporary Flight Restriction
- ▭ USFS Wilderness Study Area Boundary
- Dirt Road
- - - Unimproved Road
- - - Motorized Trail
- Dirt (Not Paved)



Scale: 1:40,000  
Page 1 of 6

7/31/2022 0528  
North American 1983 Datum. Lat/Long Grid



Div P

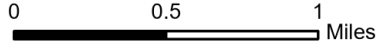


# IAP

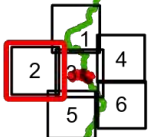
## Hog Trough MT-BRF-022161

7/31/2022

672 acres at 7/30/22 2231  
Acres from IR

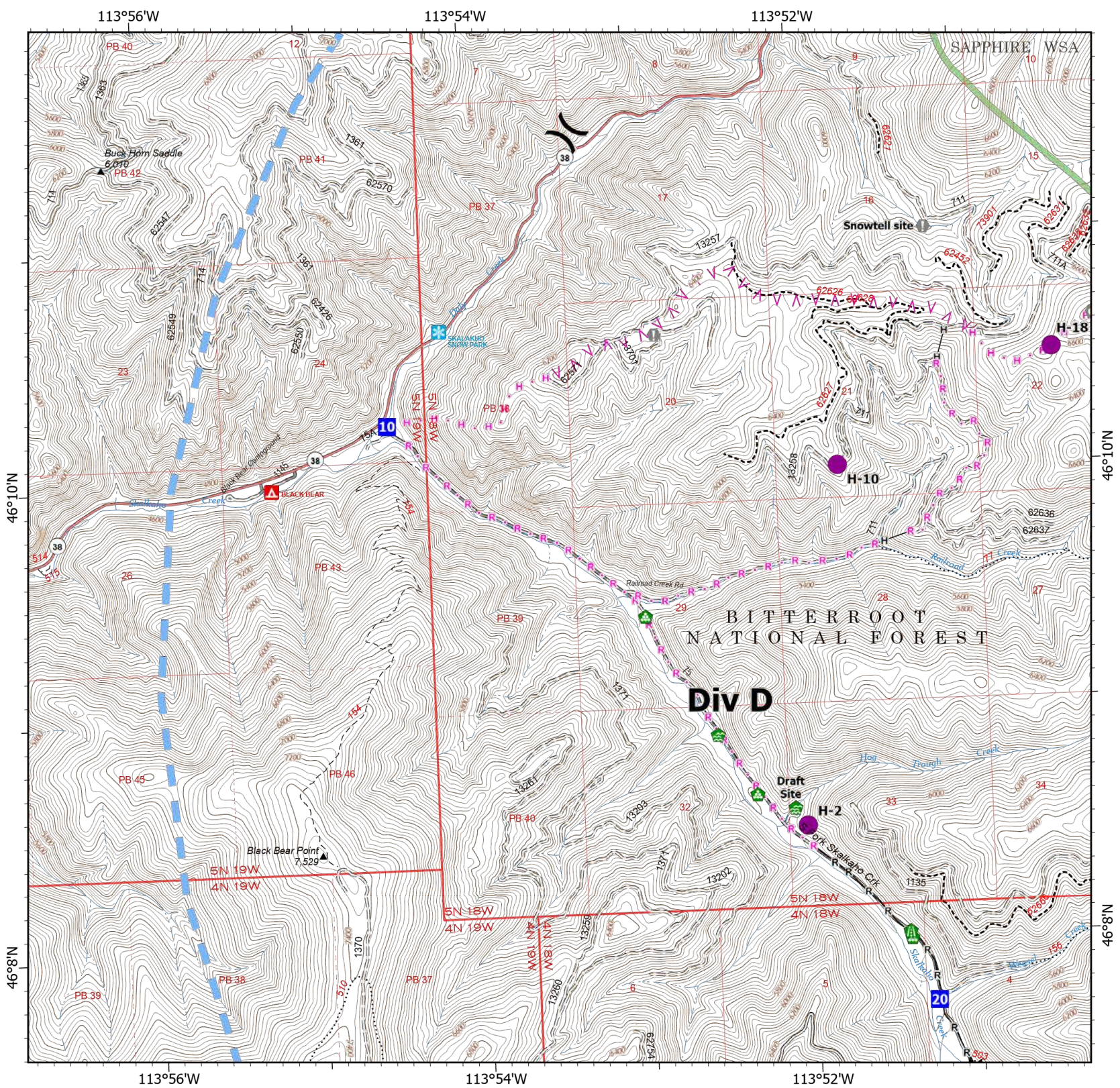


- Helispot
- ) Division Break
- Drop Point
- Value at Risk
- Landmark
- Water Development or Draft Site
- Road Repair
- Landing or Log Deck
- Completed Fuel Break
- Completed Hand Line
- Completed Road as Line
- ^ Planned Fuel Break
- Planned Hand Line
- Planned Road as Line
- Temporary Flight Restriction
- USFS Wilderness Study Area Boundary
- Gravel Road
- Dirt Road
- Unimproved Road
- USFS Motorcycle Trail
- Motorized Trail
- Paved Roads
- Dirt (Not Paved)



Scale: 1:40,000  
Page 2 of 6

7/31/2022 0528  
North American 1983 Datum. Lat/Long Grid



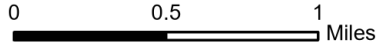


# IAP

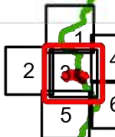
## Hog Trough MT-BRF-022161

7/31/2022

672 acres at 7/30/22 2231  
Acres from IR

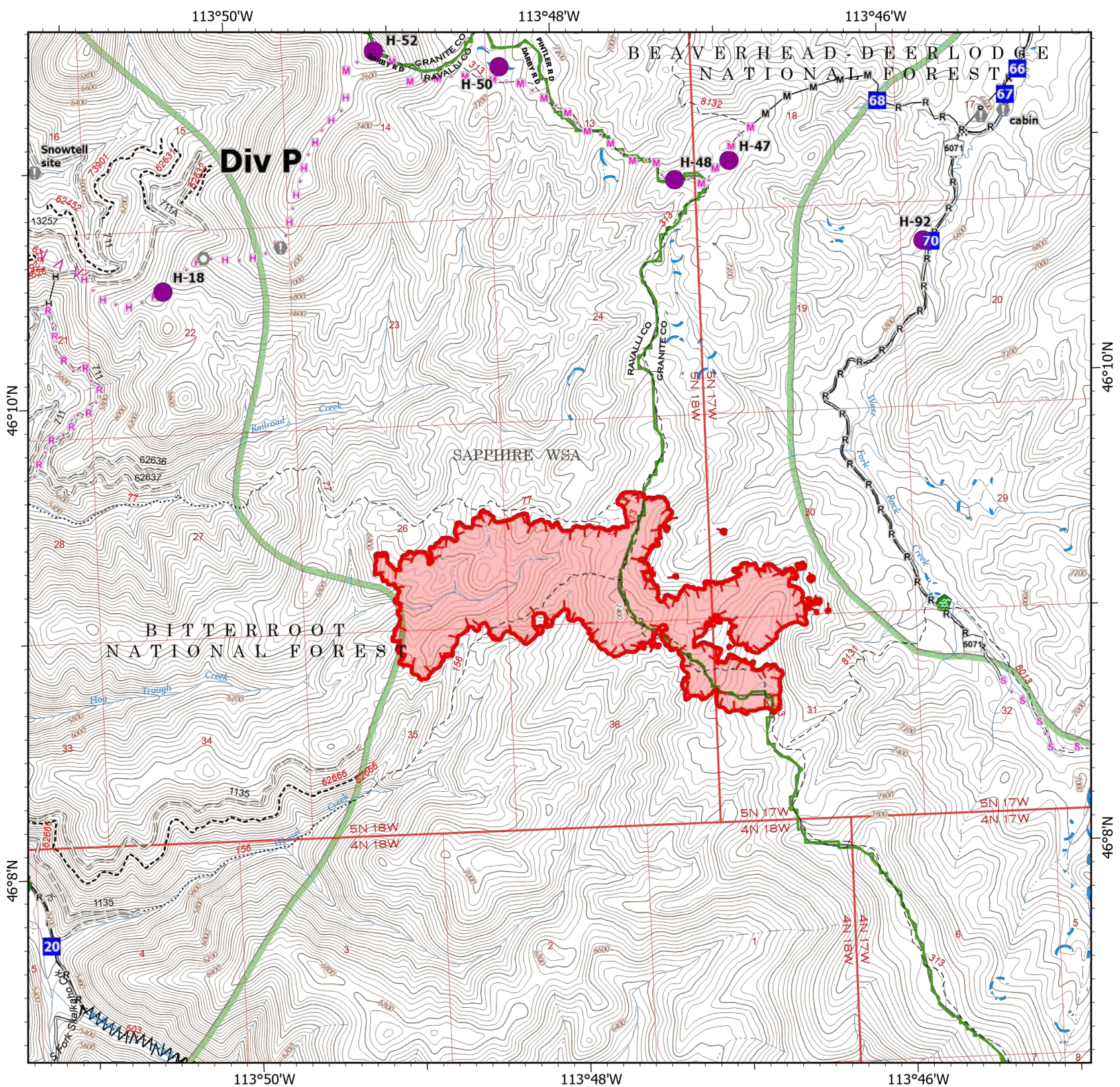


- Helispot
- Drop Point
- Value at Risk
- Landmark
- Water Development or Draft Site
- Road Repair
- Landing or Log Deck
- Completed Fuel Break
- Completed Hand Line
- Completed Mixed Construction Line
- Completed Road as Line
- Planned Fuel Break
- Planned Hand Line
- Planned Mixed Construction Line
- Planned Road as Line
- Planned Secondary Line
- Uncontained
- Wildfire Daily Fire Perimeter
- USFS Wilderness Study Area Boundary
- Gravel Road
- Unimproved Road
- USFS Motorcycle Trail
- Motorized Trail
- Dirt (Not Paved)



Scale: 1:40,000  
Page 3 of 6

7/31/2022 0528  
North American 1983 Datum. Lat/Long Grid





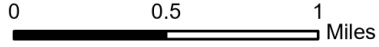
# IAP

## Hog Trough

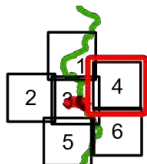
### MT-BRF-022161

7/31/2022

672 acres at 7/30/22 2231  
Acres from IR

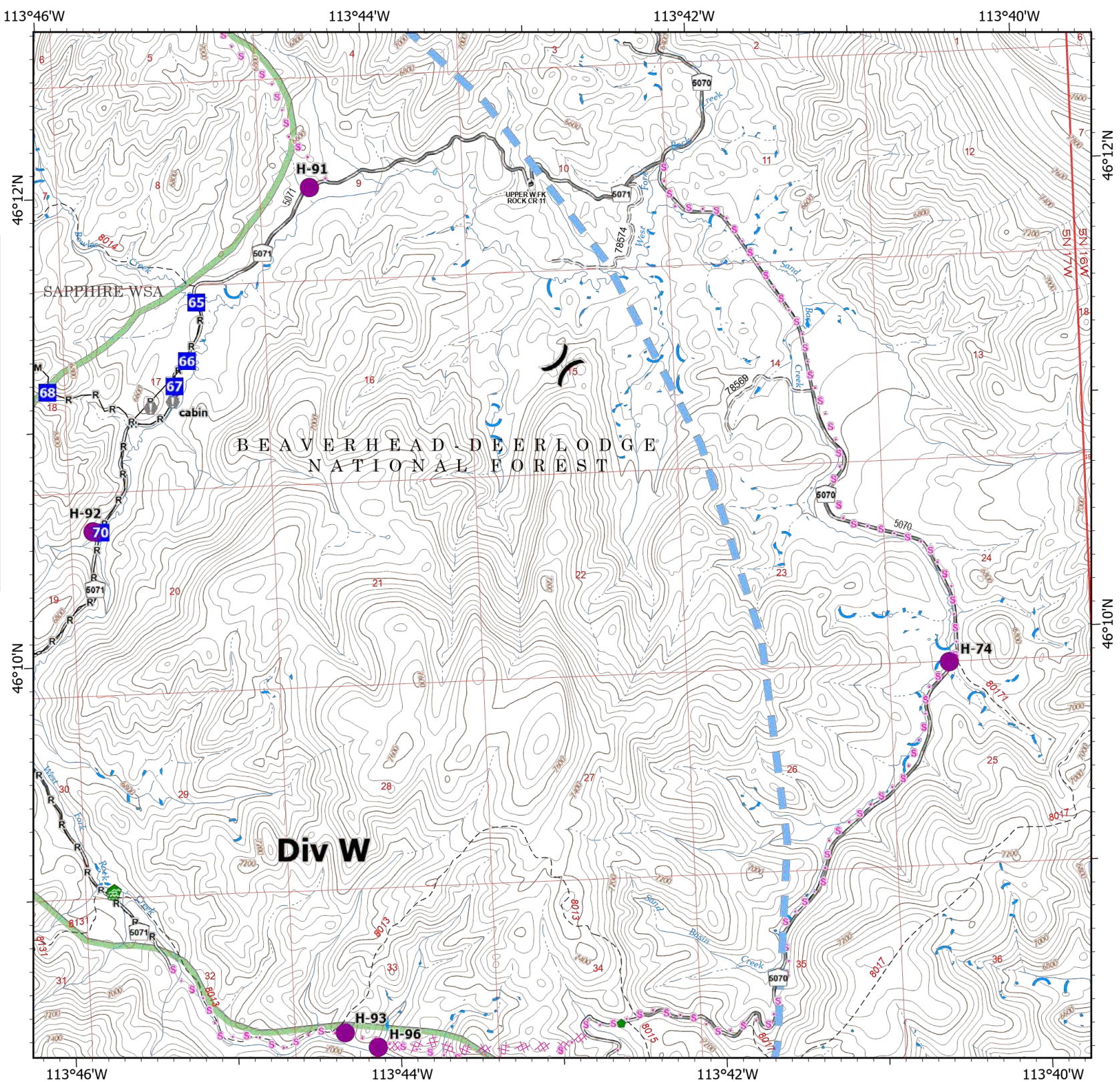


- Helispot
- )( Division Break
- Drop Point
- Value at Risk
- Water Development or Draft Site
- Repair Point
- Completed Mixed Construction Line
- Completed Road as Line
- ✕ Planned Dozer Line
- s Planned Secondary Line
- Temporary Flight Restriction
- USFS Wilderness Study Area Boundary
- Gravel Road
- - Unimproved Road
- Dirt (Not Paved)



Scale: 1:40,000  
Page 4 of 6

7/31/2022 0528  
North American 1983 Datum. Lat/Long Grid



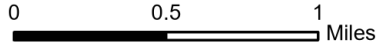


# IAP

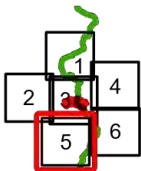
Hog Trough  
MT-BRF-022161

7/31/2022

672 acres at 7/30/22 2231  
Acres from IR

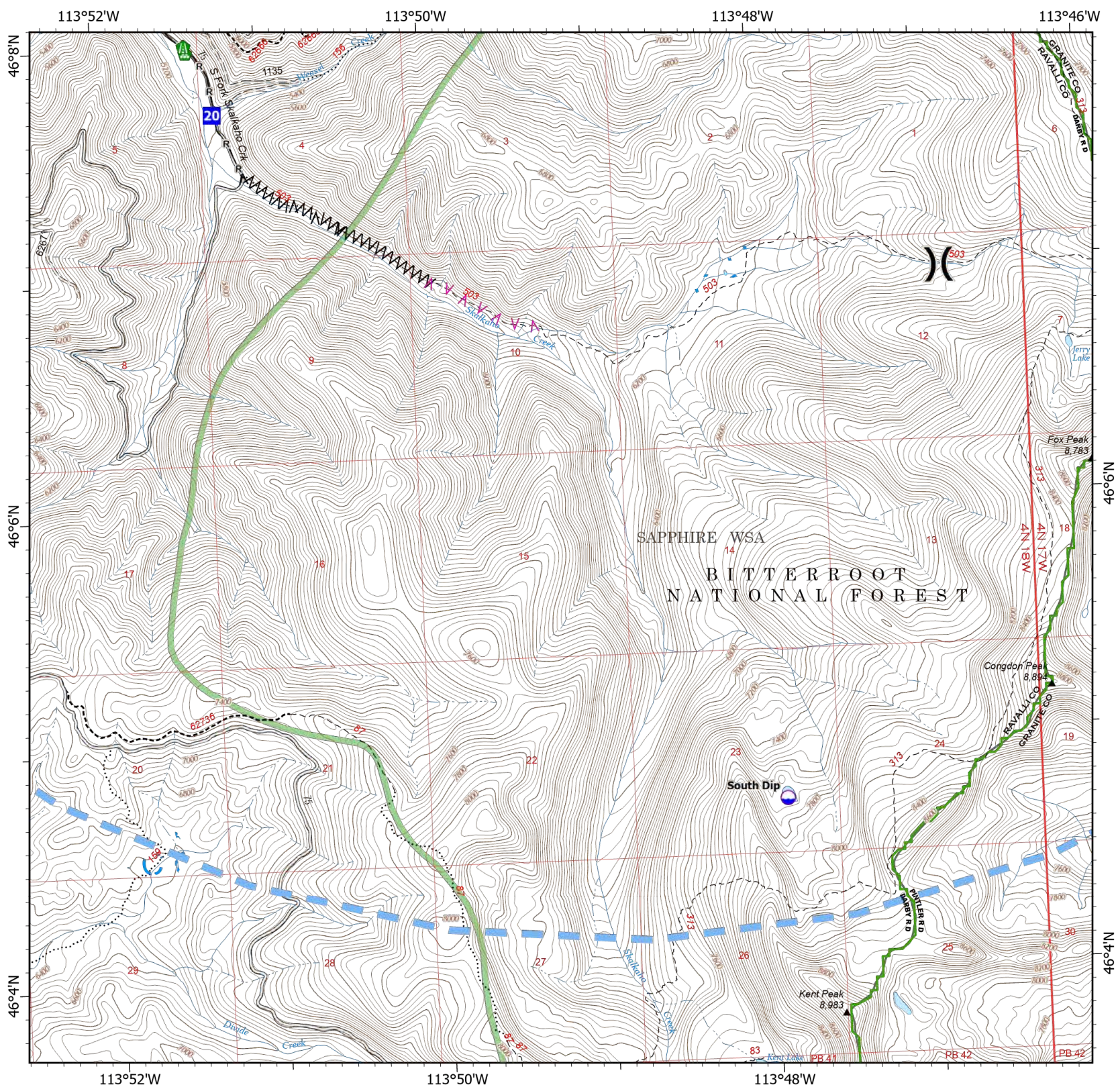


- Dip Site
- Division Break
- Drop Point
- Road Repair
- Landing or Log Deck
- Completed Fuel Break
- Completed Road as Line
- Planned Fuel Break
- Temporary Flight Restriction
- USFS Wilderness Study Area Boundary
- Gravel Road
- Dirt Road
- Unimproved Road
- USFS Motorcycle Trail
- Motorized Trail
- Dirt (Not Paved)



Scale: 1:40,000  
Page 5 of 6

7/31/2022 0528  
North American 1983 Datum. Lat/Long Grid





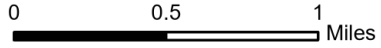
# IAP

## Hog Trough

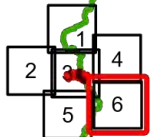
### MT-BRF-022161

7/31/2022

672 acres at 7/30/22 2231  
Acres from IR



- Dip Site
- Helispot
- Repair Point
- Planned Dozer Line
- Planned Secondary Line
- Temporary Flight Restriction
- USFS Wilderness Study Area Boundary
- Gravel Road
- Unimproved Road
- Dirt (Not Paved)



Scale: 1:40,000  
Page 6 of 6

7/31/2022 0528  
North American 1983 Datum. Lat/Long Grid

