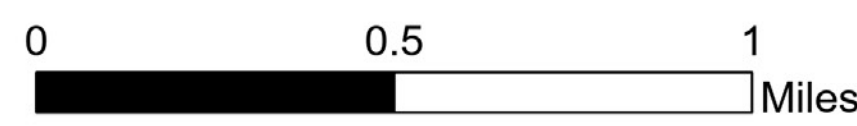
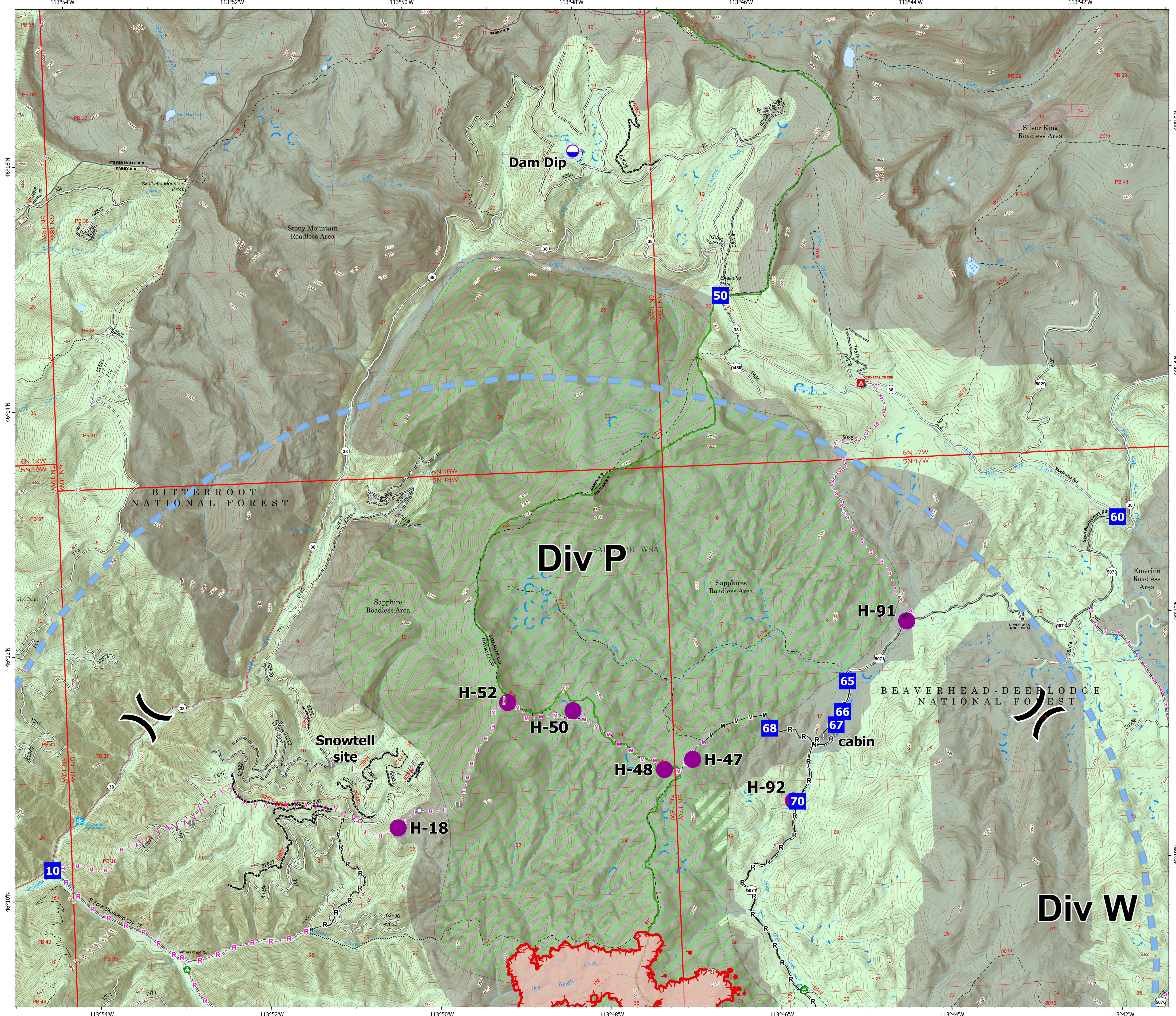


DIV P Operations

Hog Trough
MT-BRF-022161
8/01/2022
731 acres at 7/31/22 2332
Acres from IR



- Drop Point
- ⊖ Dip Site
- Helispot
-) Division Break
- ⬮ Value at Risk
- ⬮ Landmark
- ⬮ Water Development or Draft Site
- ⬮ Landing or Log Deck
- Completed Hand Line
- Completed Mixed Construction Line
- Completed Road as Line
- Planned Fuel Break
- Planned Hand Line
- Planned Mixed Construction Line
- Planned Road as Line
- Planned Secondary Line
- Temporary Flight Restriction
- Uncontained
- Wildfire Daily Fire Perimeter
- State Secondary Route
- State Route Not Paved
- Gravel Road
- Dirt Road
- Unimproved Road
- USFS Motorcycle Trail
- Motorized Trail
- Forest Service Roads Closed
- Dirt (Not Paved)
- Forest Service Land
- USFS Wilderness Study Area
- USFS Roadless Areas



Div W