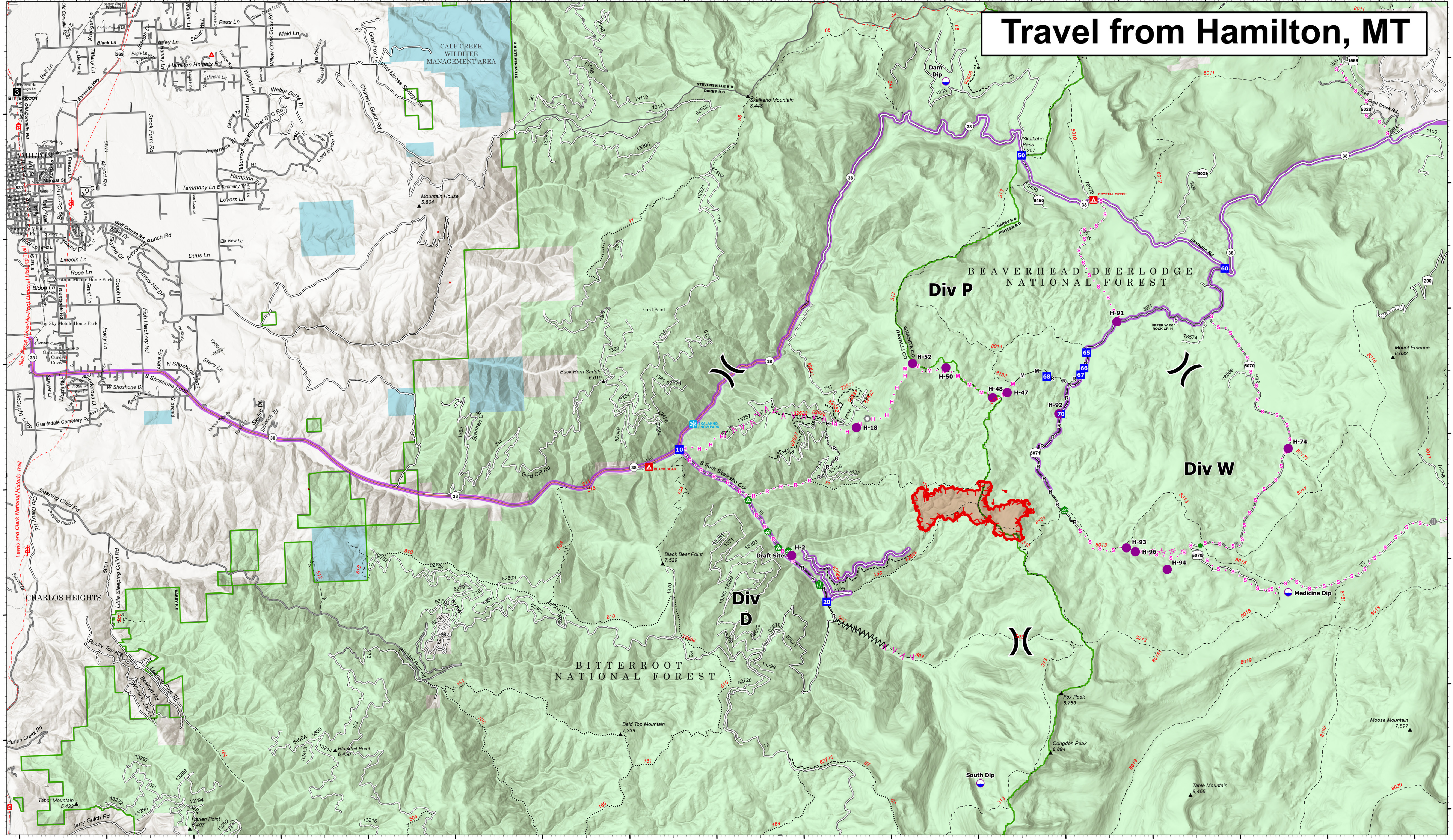
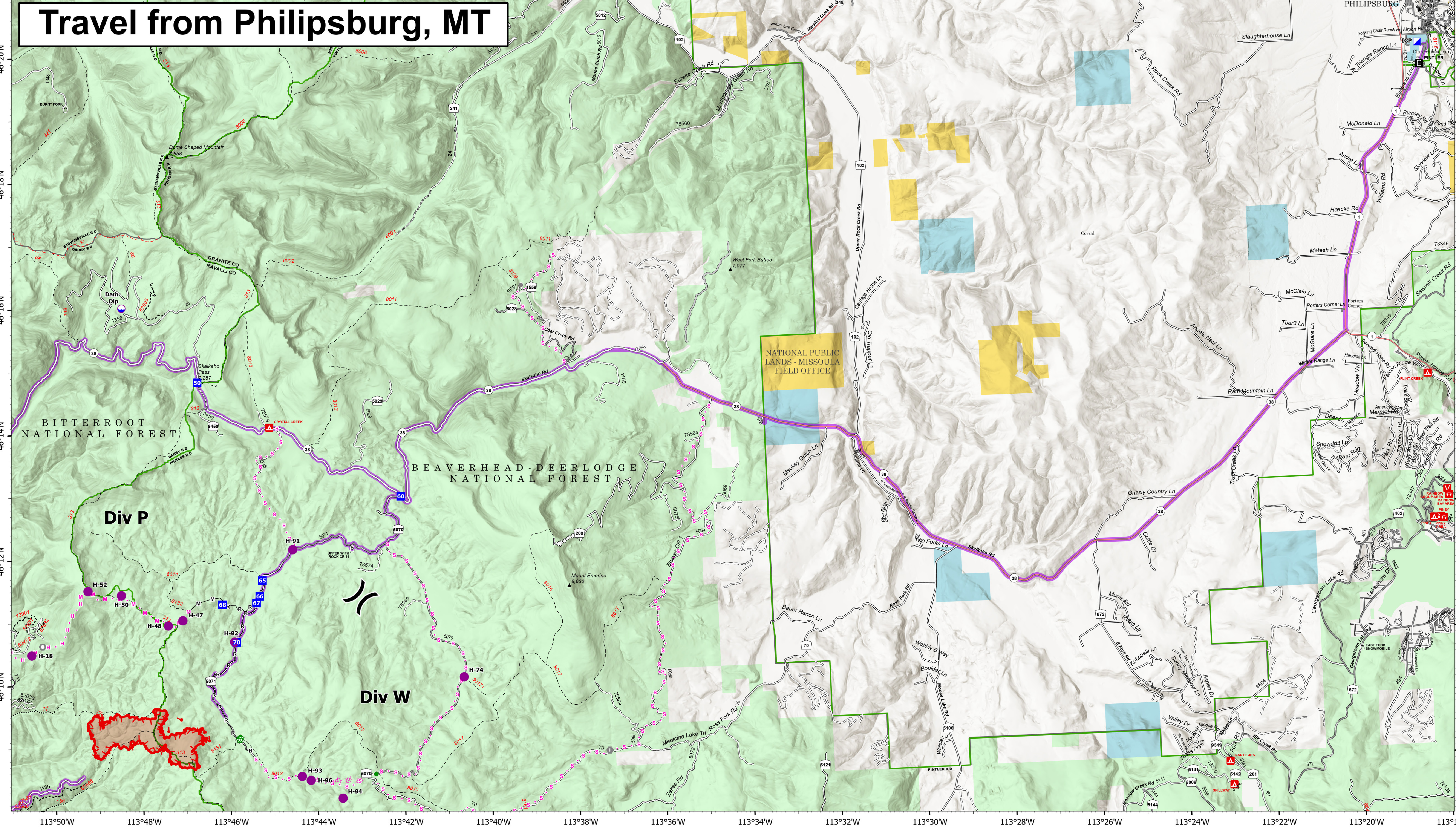


Travel from Hamilton, MT



Travel from Philipsburg, MT



Transportation

Hog Trough
 MT-BRF-022161
 8/01/2022
 731 acres at 7/31/22 2332
 Acres from IR

- | | | | |
|---------------------------------|-----------------------------------|---------------------------------|-----------------------|
| Travel Routes | Road Repair | Planned Hand Line | Unimproved Road |
| Dip Site | Repair Point | Planned Mixed Construction Line | USFS Motorcycle Trail |
| Helispot | Landing or Log Deck | Planned Road as Line | Motorized Trail |
| Division Break | Completed Fuel Break | Planned Secondary Line | Paved Roads |
| Drop Point | Completed Hand Line | Wildfire Daily Fire Perimeter | Dirt (Not Paved) |
| Other | Completed Mixed Construction Line | State Secondary Route | Forest Service Land |
| Landmark | Completed Road as Line | State Route Not Paved | State Public Lands |
| Bridge | Planned Dozer Line | Gravel Road | |
| Water Development or Draft Site | Planned Fuel Break | Dirt Road | |