

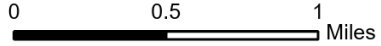
IAP

Hog Trough

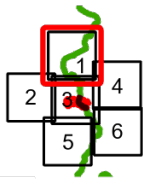
MT-BRF-022161

8/03/2022

749 acres at 8/2/22 2327
Acres from IR

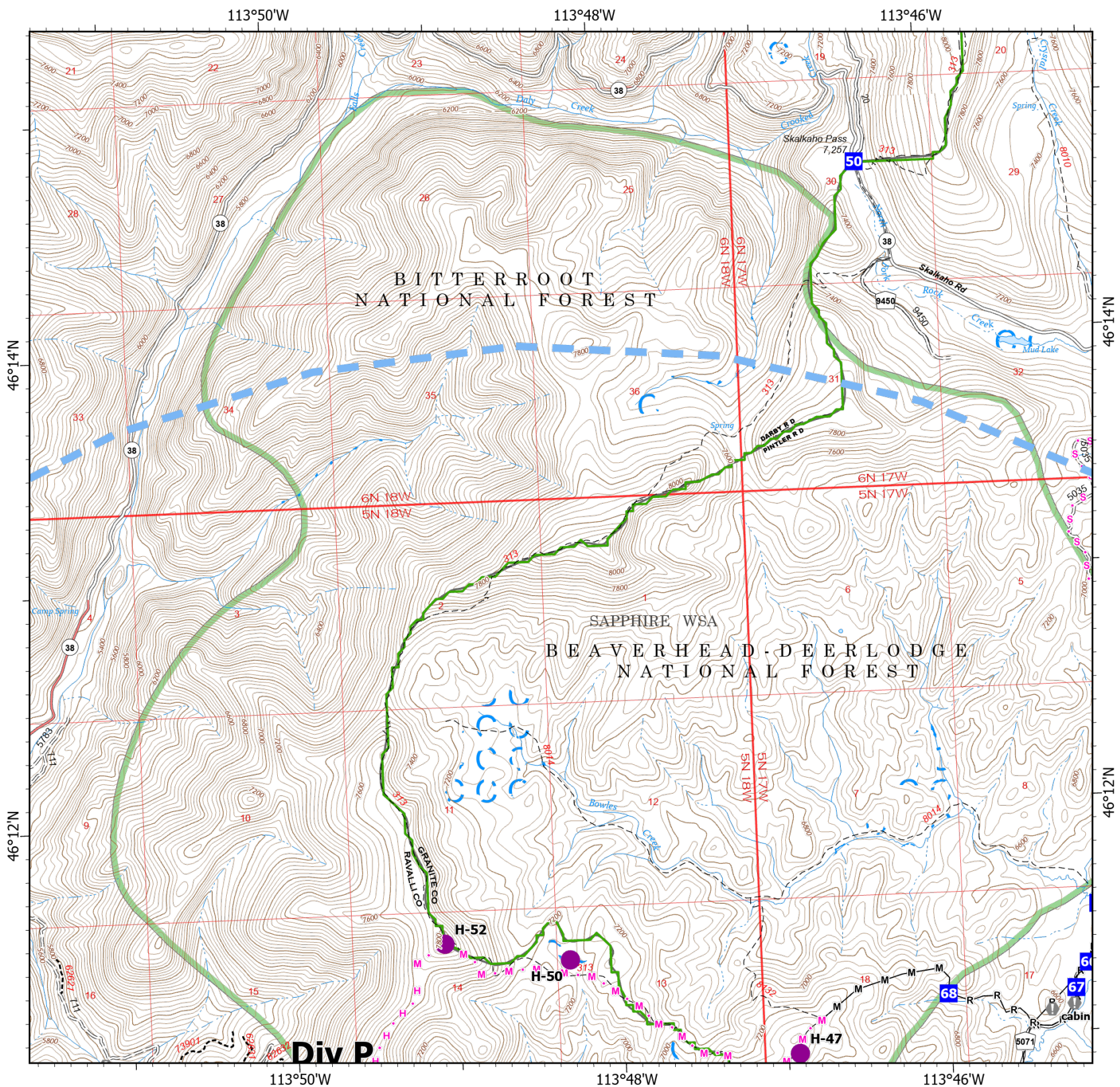


- Helispot
- Drop Point
- Value at Risk
- M**— Completed Mixed Construction Line
- R**— Completed Road as Line
- H** • Planned Hand Line
- M** • Planned Mixed Construction Line
- S** • Planned Secondary Line
- Temporary Flight Restriction
- USFS Wilderness Study Area Boundary
- Dirt Road
- Unimproved Road
- Motorized Trail
- Dirt (Not Paved)



Scale: 1:40,000
Page 1 of 6

8/3/2022 0508
North American 1983 Datum. LatLong Grid

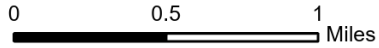


IAP

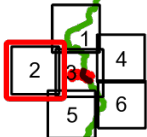
Hog Trough MT-BRF-022161

8/03/2022

749 acres at 8/2/22 2327
Acres from IR

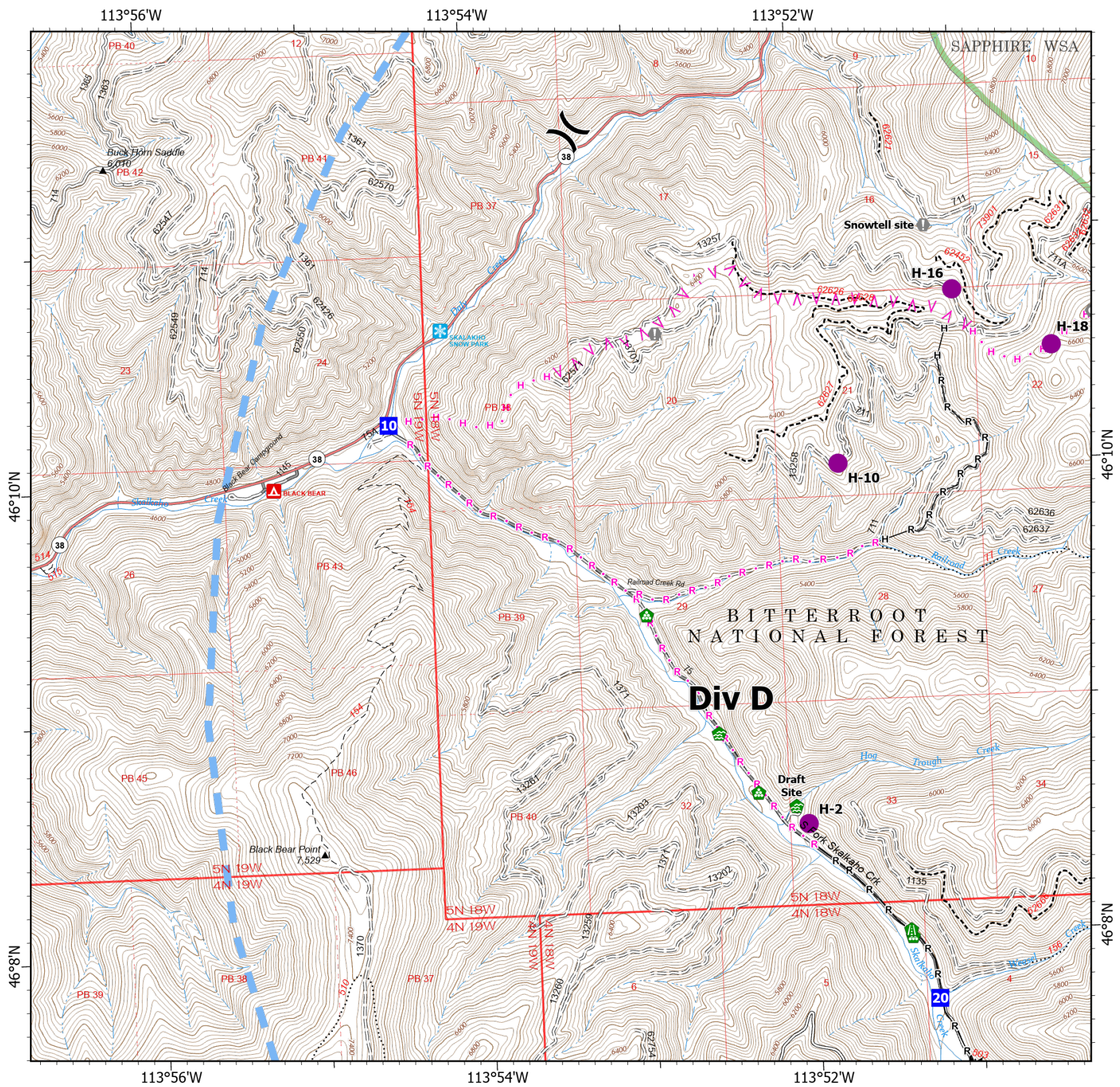


- Helispot
-) Division Break
- Drop Point
- ⓘ Value at Risk
- ⊙ Landmark
- 🏠 Water Development or Draft Site
- 🛣️ Road Repair
- 🏠 Landing or Log Deck
- ⏏ Completed Fuel Break
- Completed Hand Line
- Completed Road as Line
- ^ Planned Fuel Break
- Planned Hand Line
- Planned Road as Line
- Temporary Flight Restriction
- USFS Wilderness Study Area Boundary
- Gravel Road
- Dirt Road
- = Unimproved Road
- ⋯ USFS Motorcycle Trail
- - - Motorized Trail
- Paved Roads
- Dirt (Not Paved)



Scale: 1:40,000
Page 2 of 6

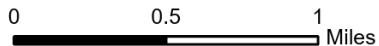
8/3/2022 0508
North American 1983 Datum. Lat/Long Grid



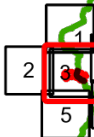
IAP
Hog Trough
MT-BRF-022161

8/03/2022

749 acres at 8/2/22 2327
 Acres from IR

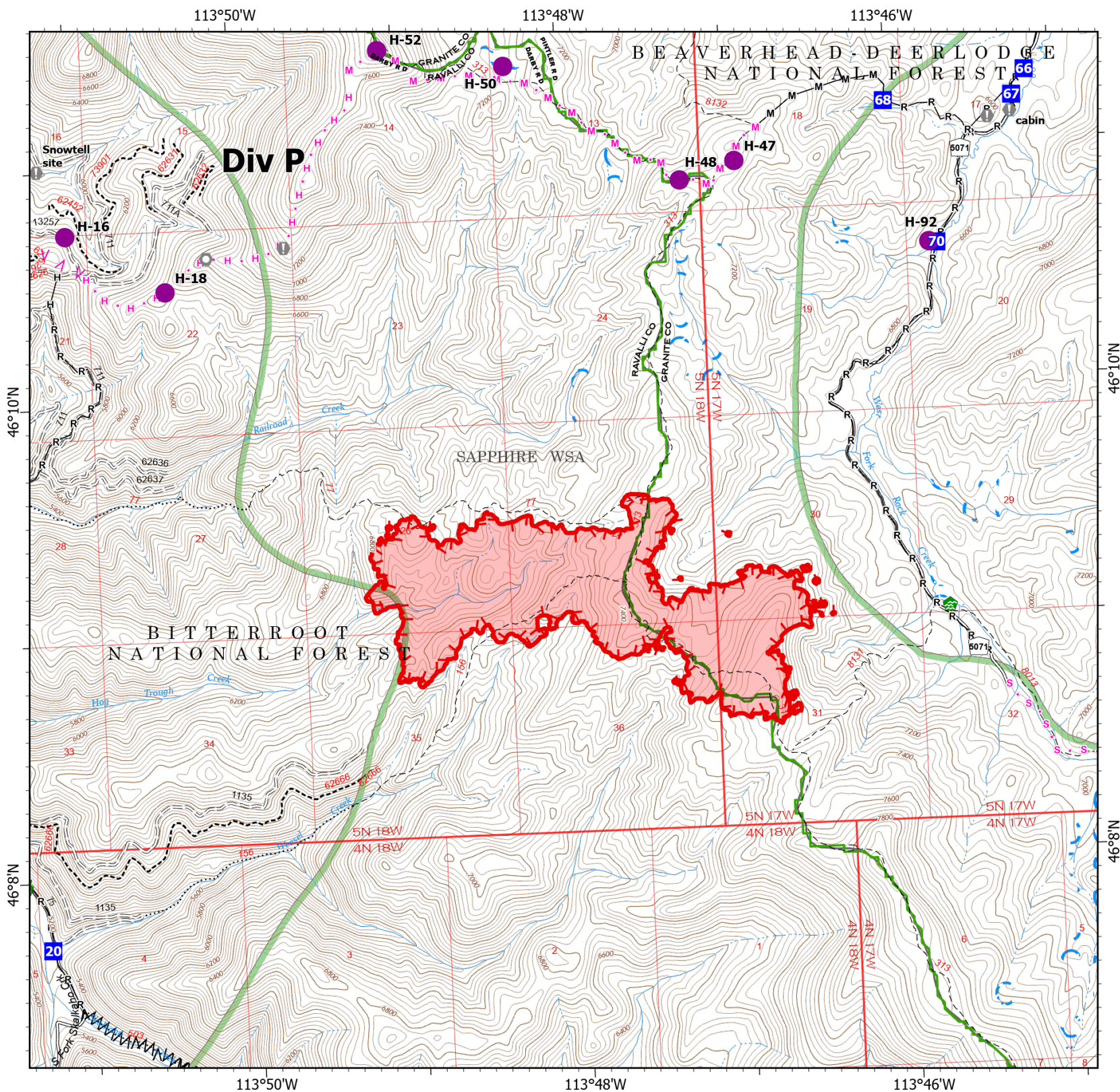


- Helispot
- Drop Point
- Value at Risk
- Landmark
- Water Development or Draft Site
- Road Repair
- Landing or Log Deck
- Completed Fuel Break
- Completed Hand Line
- Completed Mixed Construction Line
- Completed Road as Line
- Planned Fuel Break
- Planned Hand Line
- Planned Mixed Construction Line
- Planned Secondary Line
- Uncontained
- Wildfire Daily Fire Perimeter
- USFS Wilderness Study Area Boundary
- Gravel Road
- Unimproved Road
- USFS Motorcycle Trail
- Motorized Trail
- Dirt (Not Paved)



Scale: 1:40,000
 Page 3 of 6

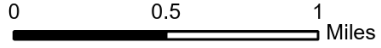
8/3/2022 0508
 North American 1983 Datum. LatLong Grid



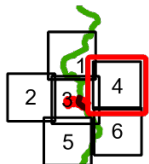
IAP
Hog Trough
MT-BRF-022161

8/03/2022

749 acres at 8/2/22 2327
 Acres from IR

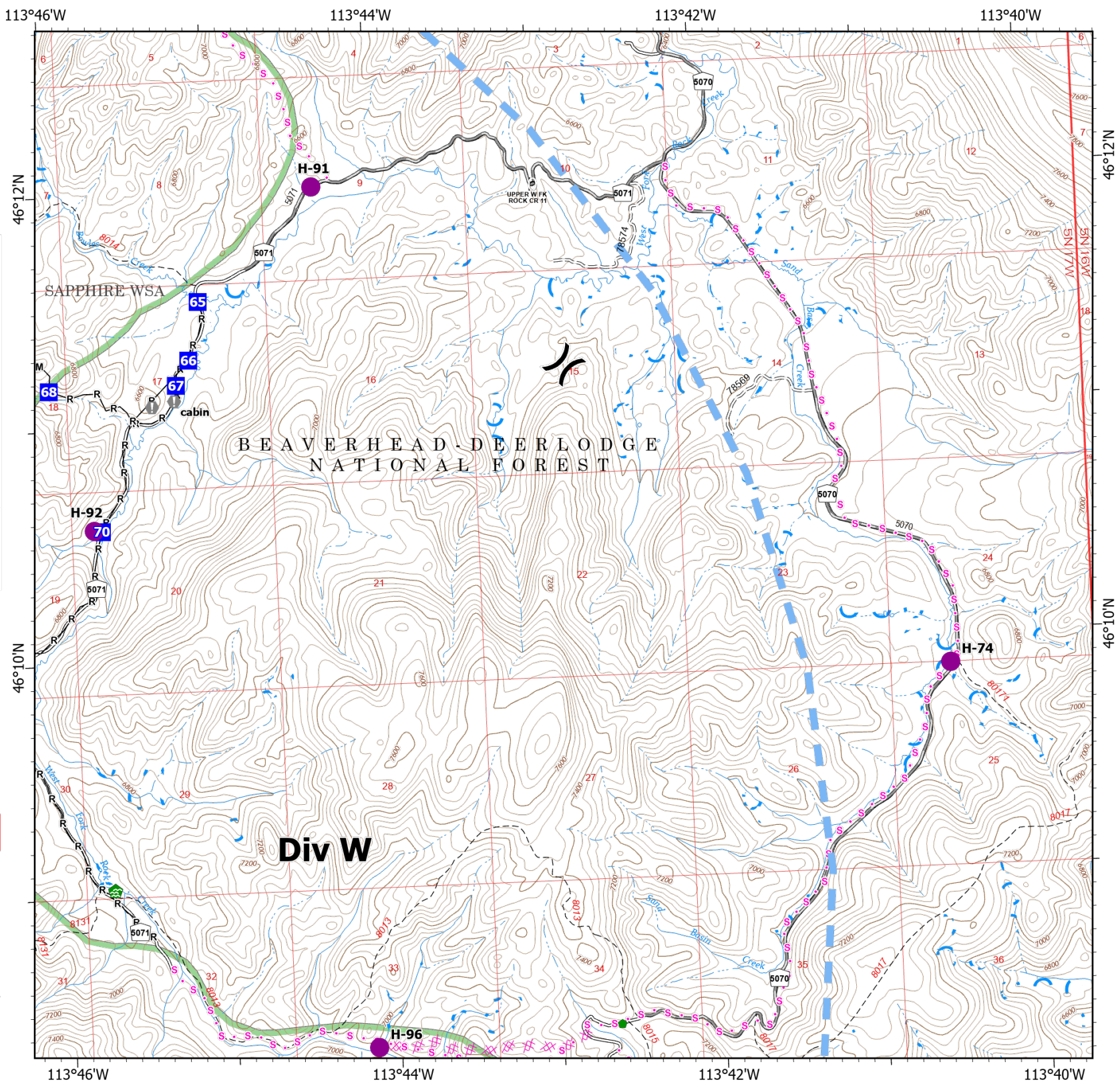


- Helispot
-)(Division Break
- Drop Point
- ⚠ Value at Risk
- 🏠 Water Development or Draft Site
- 📍 Repair Point
- Completed Mixed Construction Line
- Completed Road as Line
- ✂ Planned Dozer Line
- s Planned Secondary Line
- Temporary Flight Restriction
- USFS Wilderness Study Area Boundary
- Gravel Road
- = Unimproved Road
- Dirt (Not Paved)



Scale: 1:40,000
 Page 4 of 6

8/3/2022 0508
 North American 1983 Datum. Lat/Long Grid



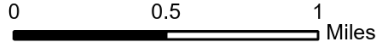
IAP

Hog Trough

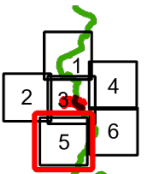
MT-BRF-022161

8/03/2022

749 acres at 8/2/22 2327
Acres from IR

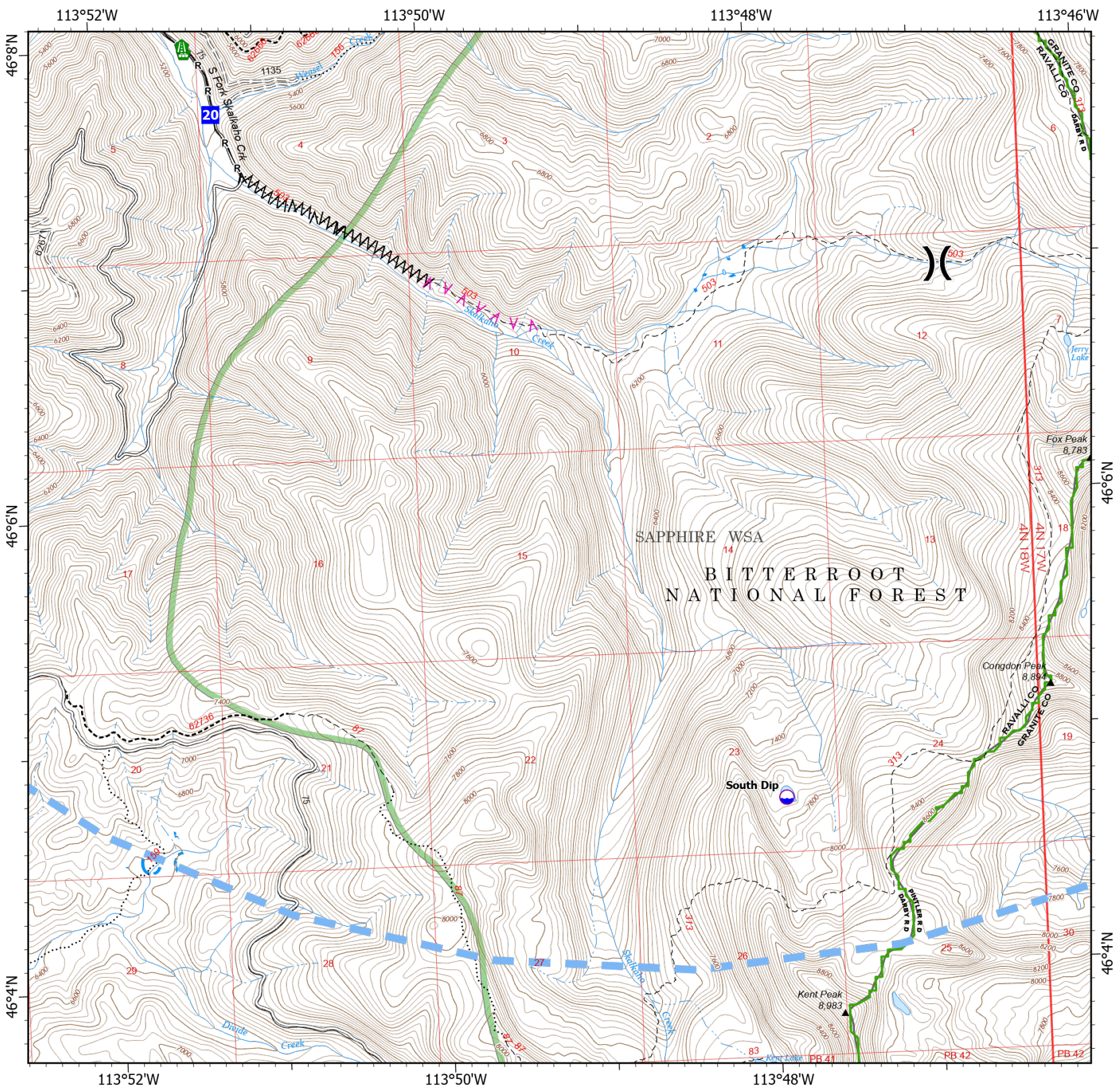


- Dip Site
- Division Break
- Drop Point
- Road Repair
- Landing or Log Deck
- Completed Fuel Break
- Completed Road as Line
- Planned Fuel Break
- Temporary Flight Restriction
- USFS Wilderness Study Area Boundary
- Gravel Road
- Dirt Road
- Unimproved Road
- USFS Motorcycle Trail
- Motorized Trail
- Dirt (Not Paved)



Scale: 1:40,000
Page 5 of 6

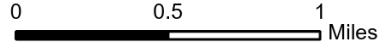
8/3/2022 0508
North American 1983 Datum. Lat/Long Grid



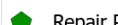
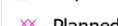

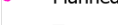

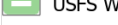

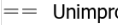


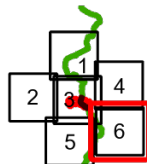
IAP
Hog Trough
MT-BRF-022161

8/03/2022

749 acres at 8/2/22 2327
 Acres from IR



-  Dip Site
-  Helispot
-  Repair Point
-  Planned Dozer Line
-  Planned Secondary Line
-  Temporary Flight Restriction
-  USFS Wilderness Study Area Boundary
-  Gravel Road
-  Unimproved Road
-  Dirt (Not Paved)



Scale: 1:40,000
 Page 6 of 6

8/3/2022 0508
 North American 1983 Datum. Lat/Long Grid

