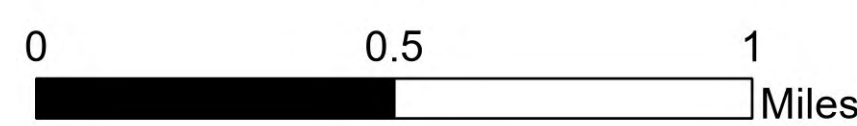
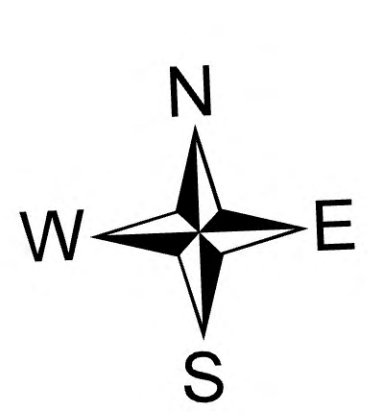


DIV D Operations

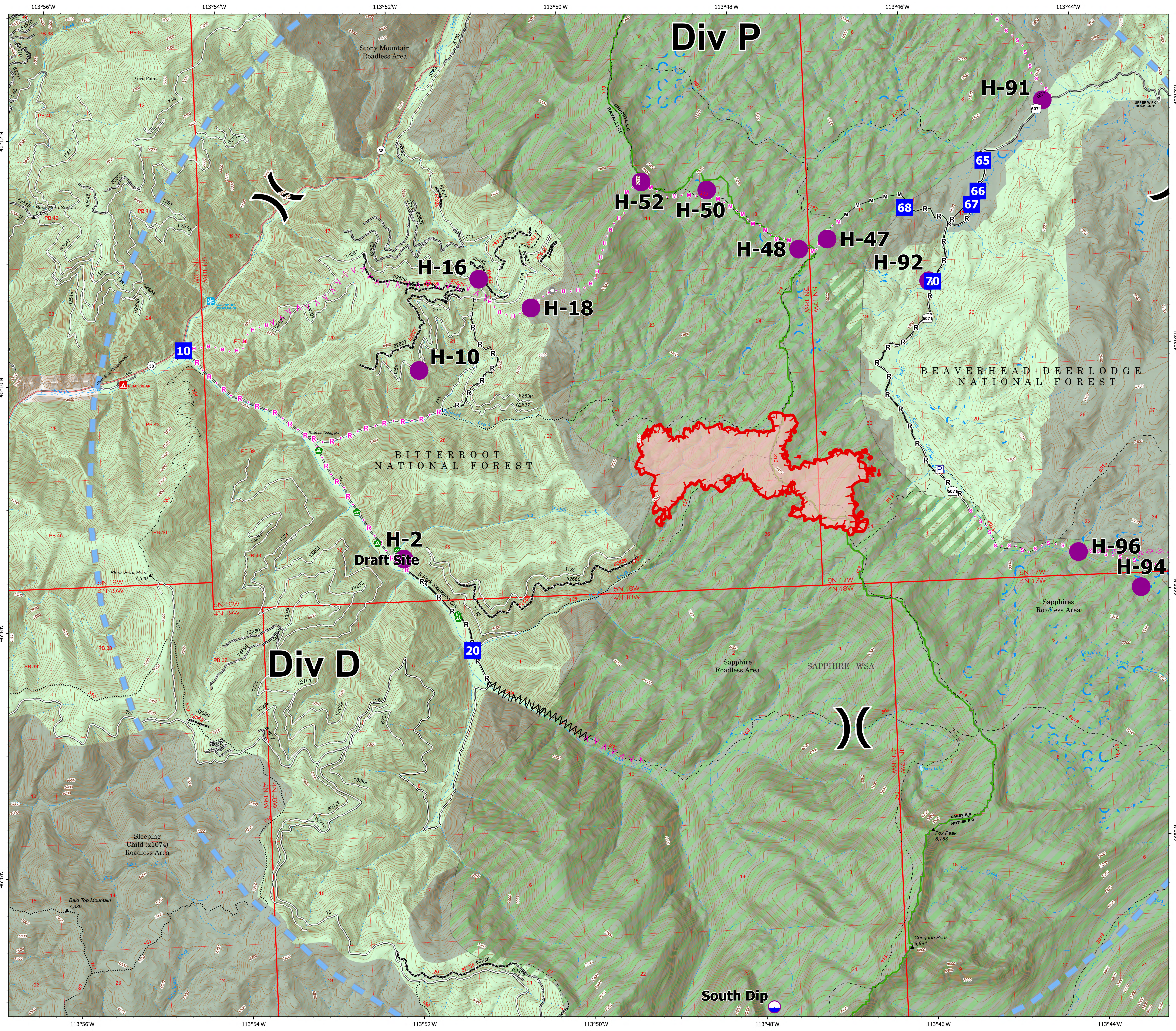
Hog Trough
MT-BRF-022161
8/04/2022
771 acres at 8/3/22 2147
Acres from IR



- Drop Point
- ⊖ Dip Site
- Helispot
- ⌋ Division Break
- ⊙ Landmark
- ⊠ Water Development or Draft Site
- ⚠ Road Repair
- ⊠ Landing or Log Deck
- ⌋ Completed Fuel Break
- Completed Hand Line
- Completed Mixed Construction Line
- Completed Road as Line
- ✂ Planned Dozer Line
- ∧ Planned Fuel Break
- Planned Hand Line
- Planned Mixed Construction Line
- Planned Road as Line
- Planned Secondary Line
- ▬ Temporary Flight Restriction
- ▬ Uncontained
- ▬ Wildfire Daily Fire Perimeter
- ▬ State Secondary Route
- ▬ Gravel Road
- ▬ Dirt Road
- ▬ Unimproved Road
- ⋯ USFS Motorcycle Trail
- ⋯ Motorized Trail
- ⊠ Forest Service Roads Closed
- ▬ Paved Roads
- ▬ Dirt (Not Paved)
- ▭ Forest Service Land
- ▭ USFS Wilderness Study Area
- ▭ USFS Roadless Areas



8/4/2022 0632
North American 1983 Datum, Lat/Long Grid



South Dip ⊖