

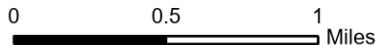
# IAP

## Hog Trough

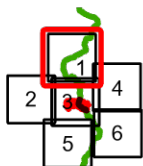
### MT-BRF-022161

8/04/2022

771 acres at 8/3/22 2147  
Acres from IR

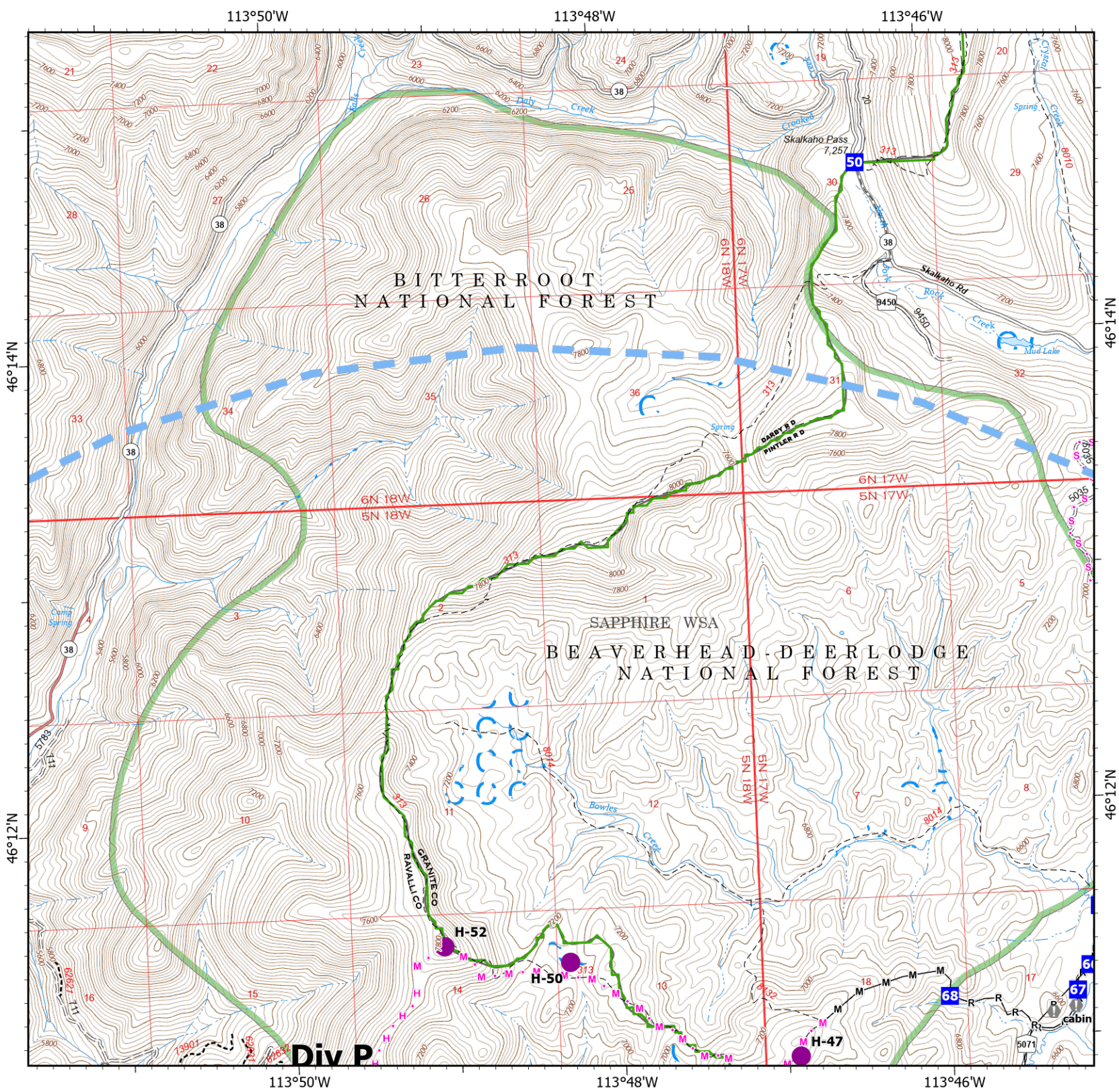


- Helispot
- Drop Point
- Value at Risk
- M**— Completed Mixed Construction Line
- R**— Completed Road as Line
- H** • Planned Hand Line
- M** • Planned Mixed Construction Line
- S** • Planned Secondary Line
- Temporary Flight Restriction
- USFS Wilderness Study Area Boundary
- Dirt Road
- Unimproved Road
- Motorized Trail
- Dirt (Not Paved)



Scale: 1:40,000  
Page 1 of 6

8/4/2022 0626  
North American 1983 Datum. LatLong Grid



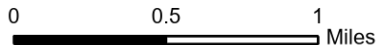
Div P

# IAP

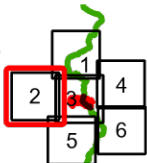
## Hog Trough MT-BRF-022161

8/04/2022

771 acres at 8/3/22 2147  
Acres from IR

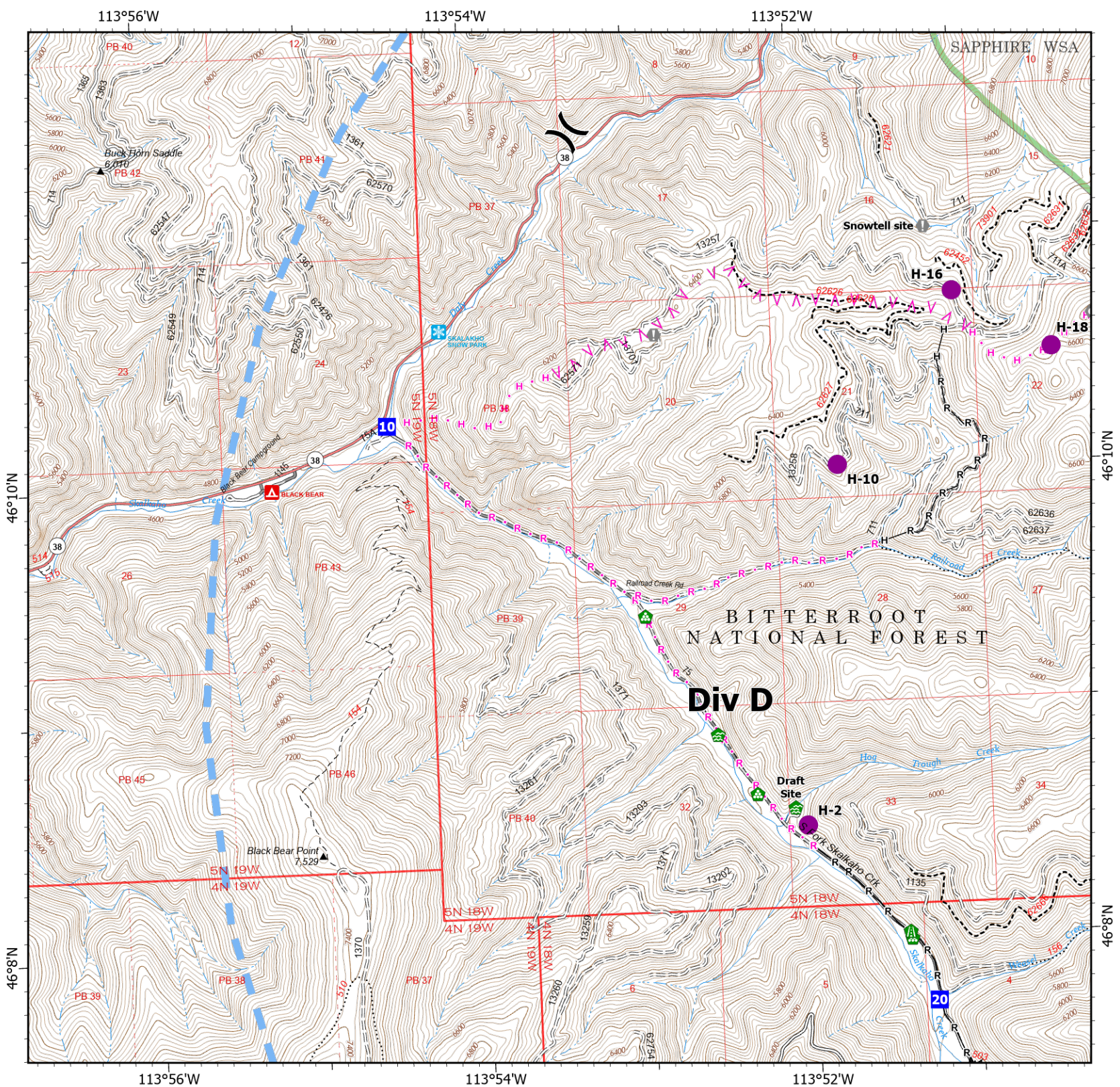


- Helispot
- )( Division Break
- Drop Point
- ⚠ Value at Risk
- ⊙ Landmark
- 🏠 Water Development or Draft Site
- 🛣 Road Repair
- 🏠 Landing or Log Deck
- ⌘ Completed Fuel Break
- H Completed Hand Line
- R Completed Road as Line
- ⌘ Planned Fuel Break
- H Planned Hand Line
- R Planned Road as Line
- Temporary Flight Restriction
- USFS Wilderness Study Area Boundary
- Gravel Road
- Dirt Road
- = Unimproved Road
- ⋯ USFS Motorcycle Trail
- Motorized Trail
- Paved Roads
- Dirt (Not Paved)



Scale: 1:40,000  
Page 2 of 6

8/4/2022 0626  
North American 1983 Datum. Lat/Long Grid

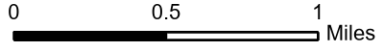


# IAP

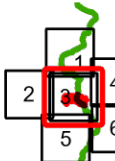
## Hog Trough MT-BRF-022161

8/04/2022

771 acres at 8/3/22 2147  
Acres from IR

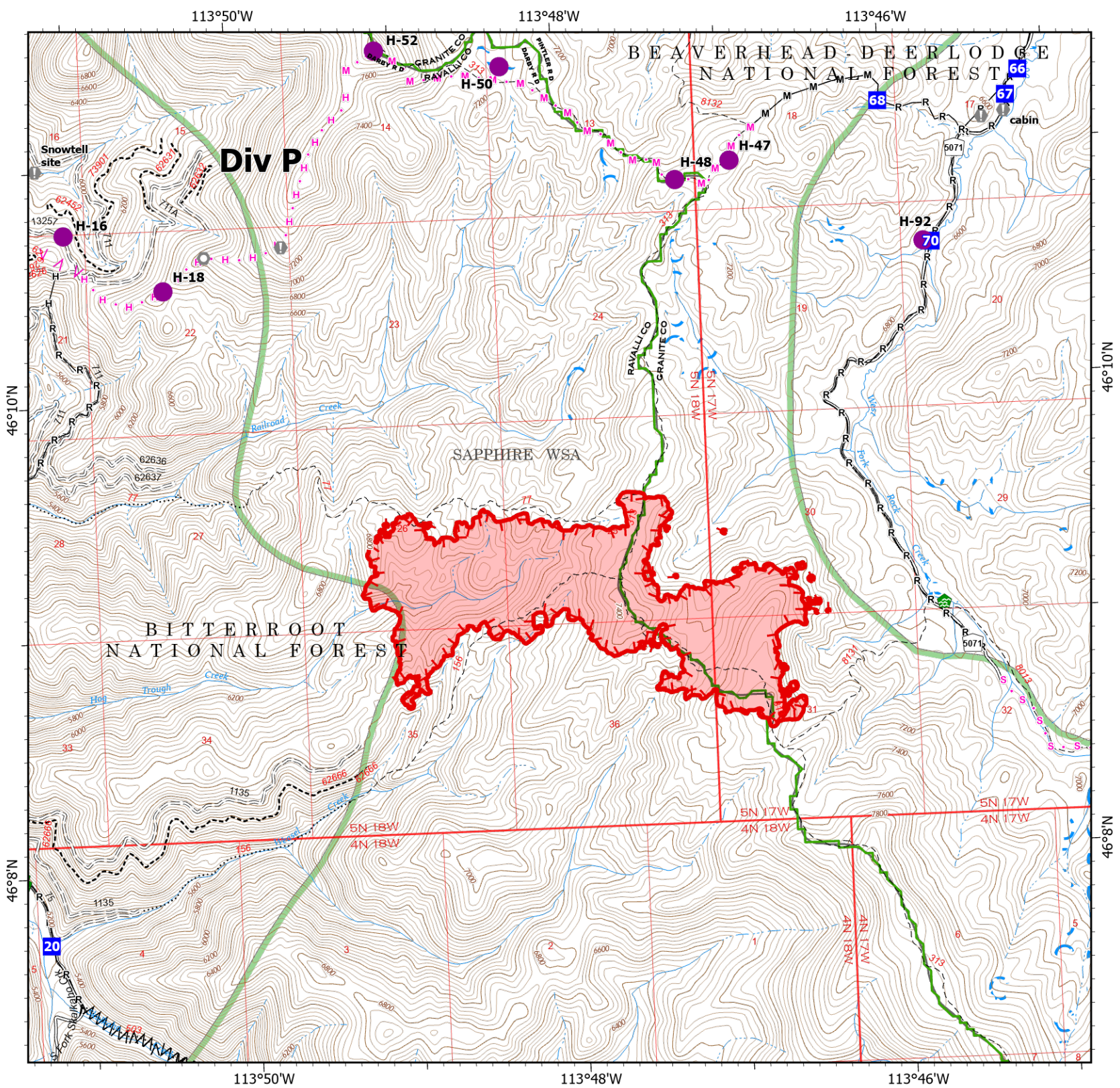


- Helispot
- Drop Point
- Value at Risk
- Landmark
- Water Development or Draft Site
- Road Repair
- Landing or Log Deck
- Completed Fuel Break
- Completed Hand Line
- Completed Mixed Construction Line
- Completed Road as Line
- Planned Fuel Break
- Planned Hand Line
- Planned Mixed Construction Line
- Planned Secondary Line
- Uncontained
- Wildfire Daily Fire Perimeter
- USFS Wilderness Study Area Boundary
- Gravel Road
- Unimproved Road
- USFS Motorcycle Trail
- Motorized Trail
- Dirt (Not Paved)



Scale: 1:40,000  
Page 3 of 6

8/4/2022 0626  
North American 1983 Datum. Lat/Long Grid



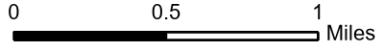
# IAP

## Hog Trough

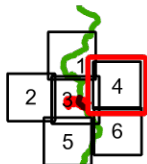
### MT-BRF-022161

8/04/2022

771 acres at 8/3/22 2147  
Acres from IR

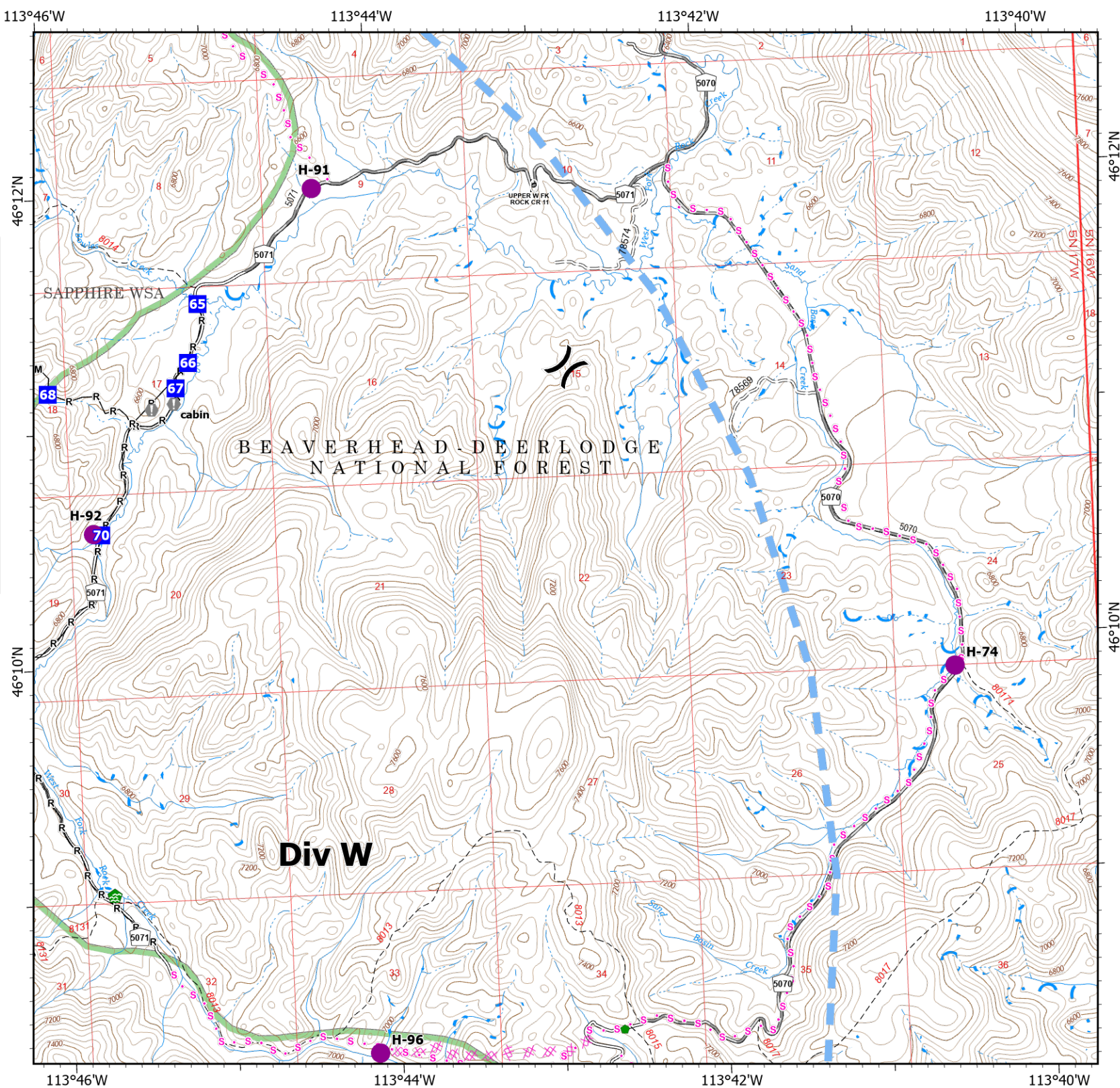


- Helispot
- ) Division Break
- Drop Point
- ⚠ Value at Risk
- 🏠 Water Development or Draft Site
- 📍 Repair Point
- Completed Mixed Construction Line
- Completed Road as Line
- ✂ Planned Dozer Line
- s Planned Secondary Line
- Temporary Flight Restriction
- USFS Wilderness Study Area Boundary
- Gravel Road
- = Unimproved Road
- Dirt (Not Paved)



Scale: 1:40,000  
Page 4 of 6

8/4/2022 0627  
North American 1983 Datum. Lat/Long Grid



113°46'W 113°44'W 113°42'W 113°40'W

46°12'N 46°10'N



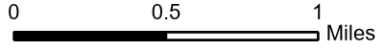
# IAP

## Hog Trough

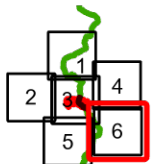
### MT-BRF-022161

8/04/2022

771 acres at 8/3/22 2147  
Acres from IR



- Dip Site
- Helispot
- Repair Point
- Planned Dozer Line
- Planned Secondary Line
- Temporary Flight Restriction
- USFS Wilderness Study Area Boundary
- Gravel Road
- Unimproved Road
- Dirt (Not Paved)



Scale: 1:40,000  
Page 6 of 6

8/4/2022 0627  
North American 1983 Datum. Lat/Long Grid

