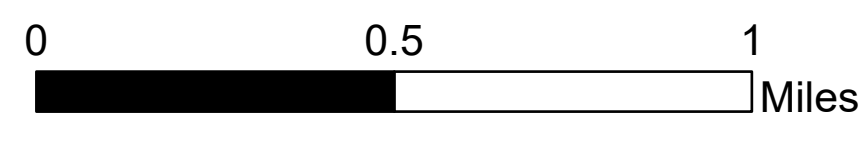
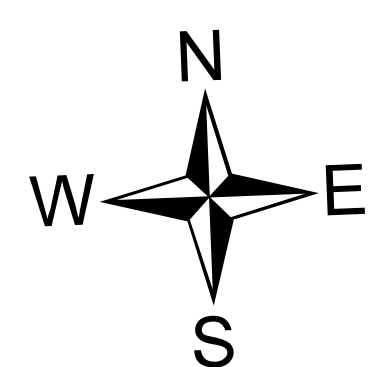


DIV D Operations

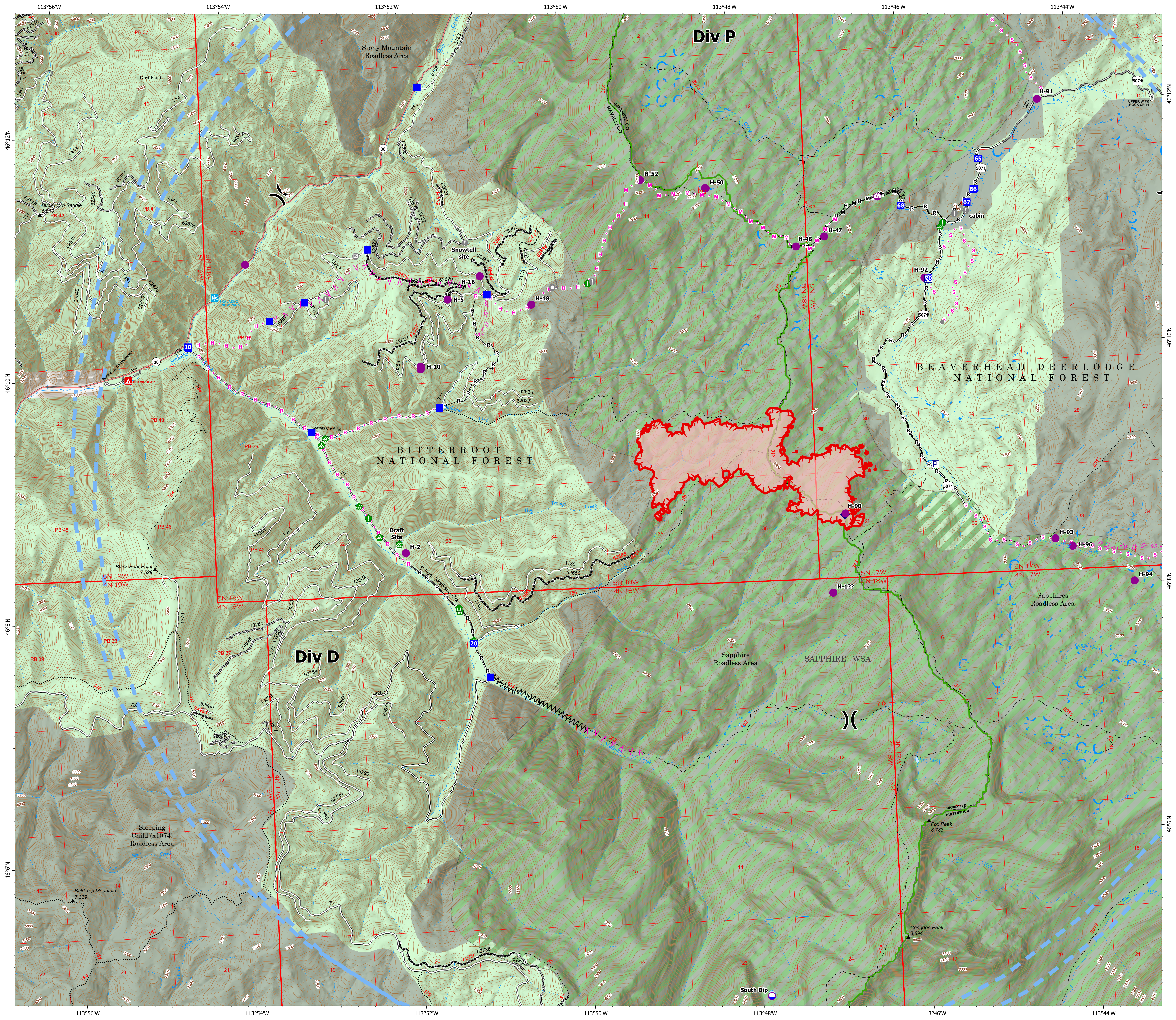
Hog Trough
MT-BRF-022161
8/05/22
771 acres at 8/04/22 0215
Acres from IR



- Uncontained
- Wildfire Daily Fire Perimeter
- State Secondary Route
- Gravel Road
- Dirt Road
- Unimproved Road
- USFS Motorcycle Trail
- Motorized Trail
- Forest Service Roads Closed
- Paved Roads
- Dirt (Not Paved)
- Forest Service Land
- USFS Wilderness Study Area
- USFS Roadless Areas



8/4/2022 2155
North American 1983 Datum, Lat/Long Grid



113°56W 113°54W 113°52W 113°50W 113°48W 113°46W 113°44W

46°12'N 46°10'N 46°8'N 46°6'N 46°4'N

46°12'N 46°10'N 46°8'N 46°6'N 46°4'N