

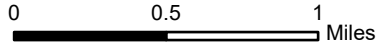
# IAP

## Hog Trough

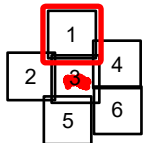
### MT-BRF-022161

8/05/22

771 acres at 8/4/22 0215  
Acres from IR

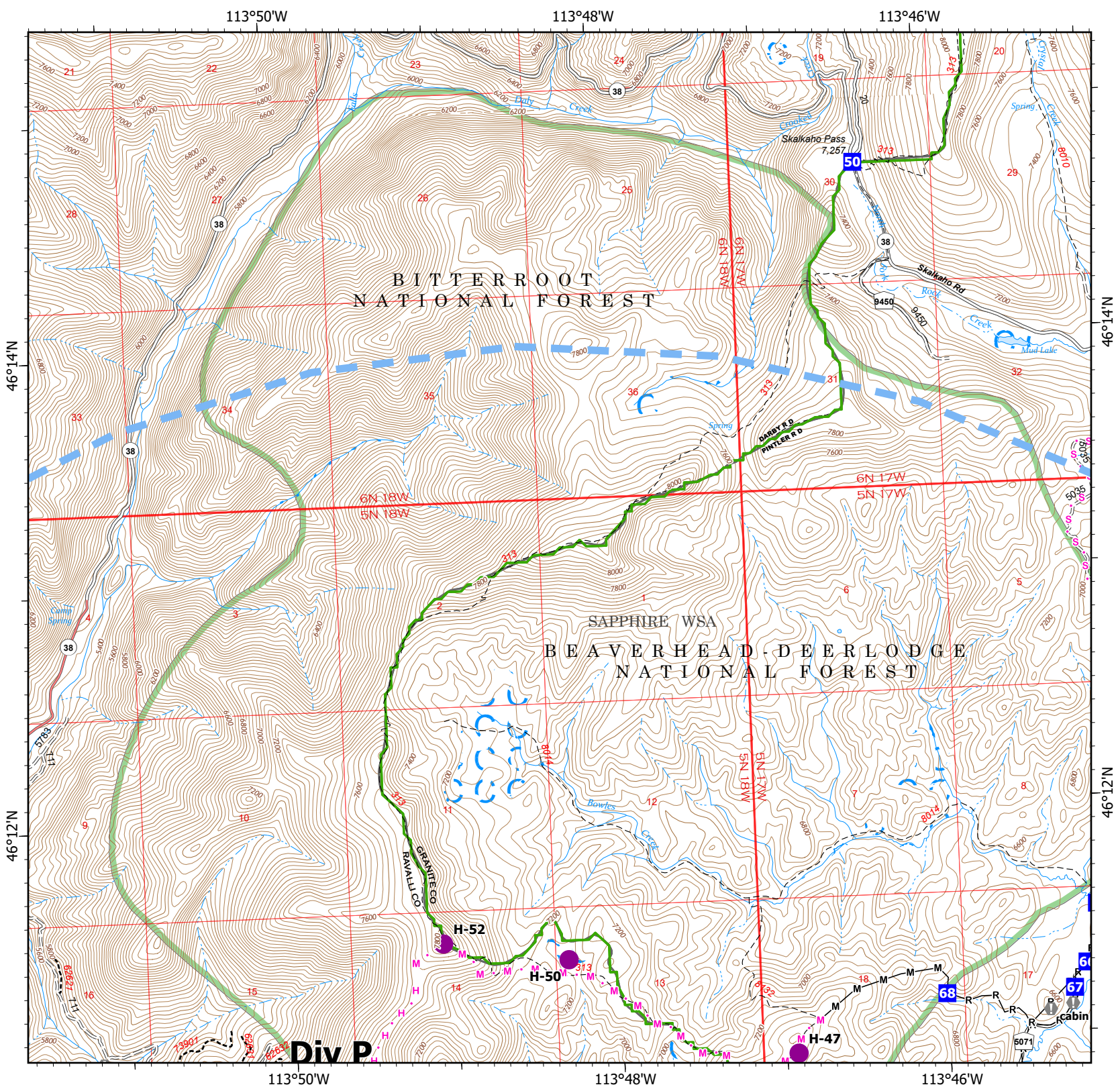


- Helispot
- Drop Point
- Value at Risk
- Completed Mixed Construction Line
- Completed Road as Line
- Planned Hand Line
- Planned Mixed Construction Line
- Planned Secondary Line
- Temporary Flight Restriction
- USFS Wilderness Study Area Boundary
- Dirt Road
- = Unimproved Road
- Motorized Trail
- Dirt (Not Paved)



Scale: 1:40,000  
Page 1 of 6

8/4/2022 2313  
North American 1983 Datum. LatLong Grid



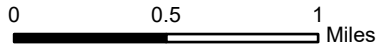
Div P

# IAP

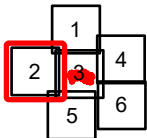
## Hog Trough MT-BRF-022161

8/05/22

771 acres at 8/4/22 0215  
Acres from IR

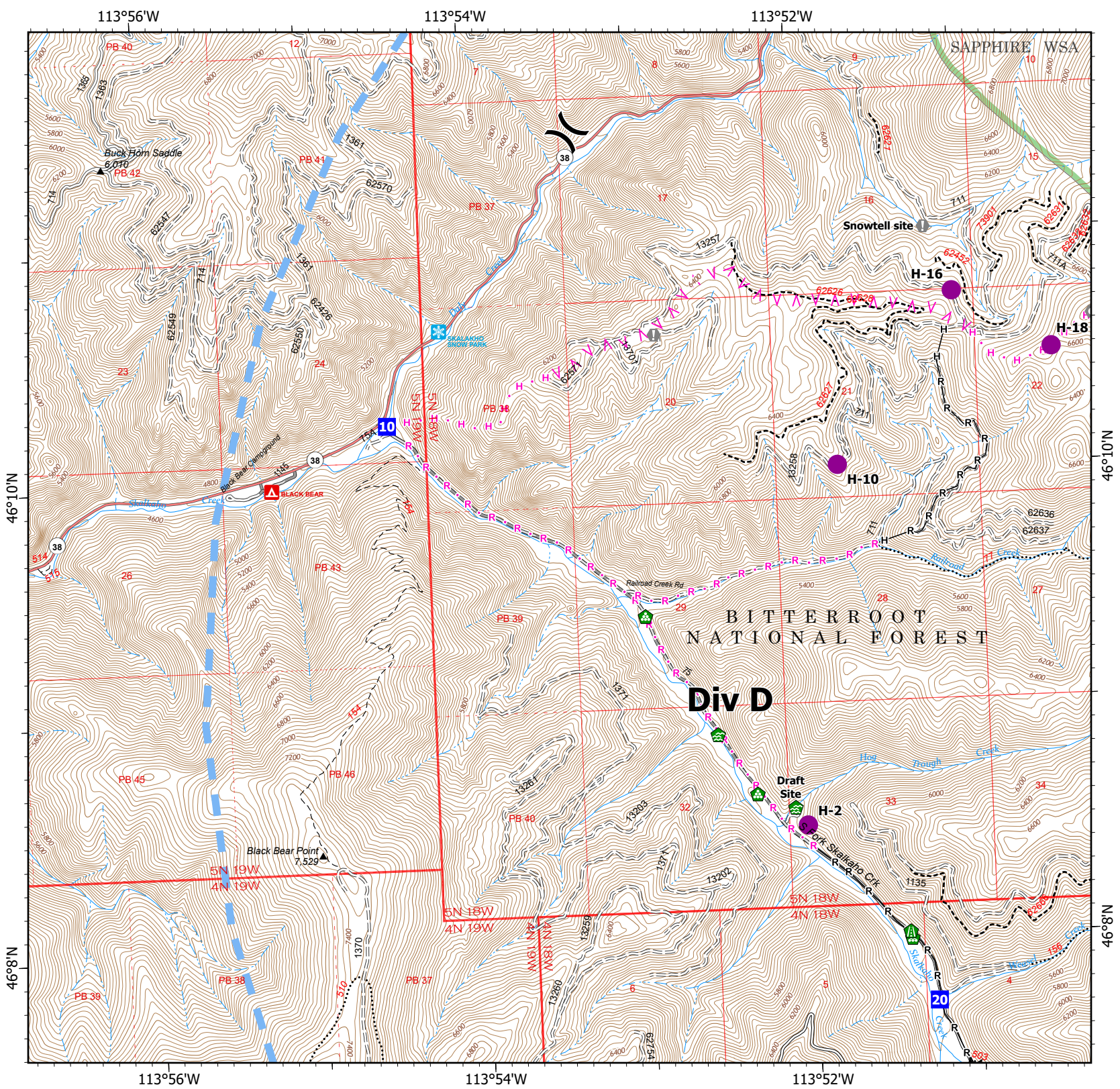


- Helispot
- ) Division Break
- Drop Point
- ⓘ Value at Risk
- Landmark
- 🏠 Water Development or Draft Site
- 🛣️ Road Repair
- 🏠 Landing or Log Deck
- ⏏ Completed Fuel Break
- H Completed Hand Line
- R Completed Road as Line
- ^ Planned Fuel Break
- H Planned Hand Line
- R Planned Road as Line
- ▬ Temporary Flight Restriction
- ▬ USFS Wilderness Study Area Boundary
- ▬ Gravel Road
- ▬ Dirt Road
- ▬ Unimproved Road
- ⋯ USFS Motorcycle Trail
- Motorized Trail
- ▬ Paved Roads
- ▬ Dirt (Not Paved)



Scale: 1:40,000  
Page 2 of 6

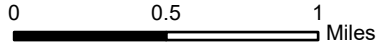
8/4/2022 2313  
North American 1983 Datum. LatLong Grid



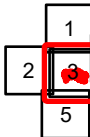
**IAP**  
**Hog Trough**  
**MT-BRF-022161**

8/05/22

771 acres at 8/4/22 0215  
 Acres from IR

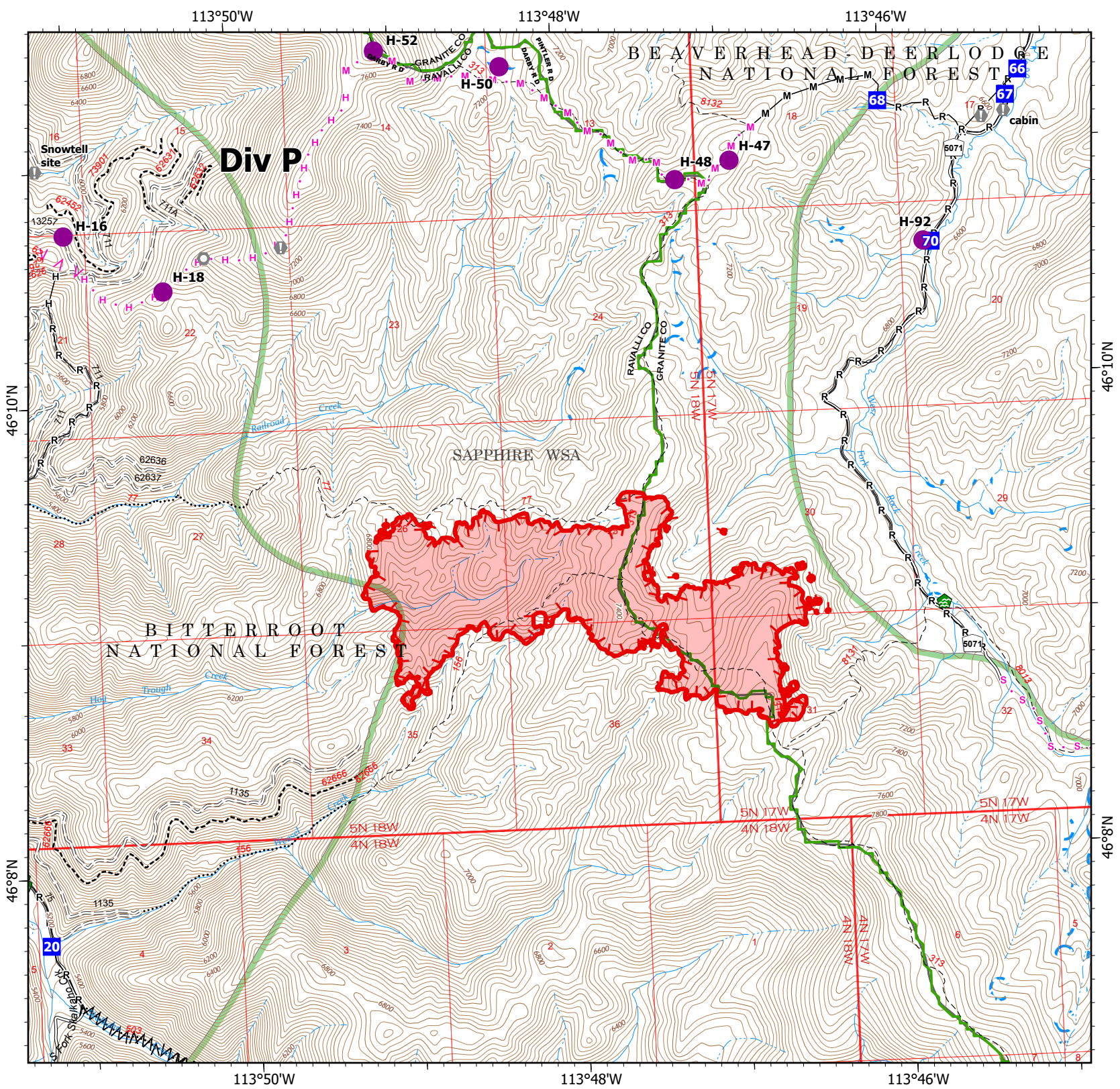


- Helispot
- Drop Point
- Value at Risk
- Landmark
- Water Development or Draft Site
- Road Repair
- Landing or Log Deck
- Completed Fuel Break
- Completed Hand Line
- Completed Mixed Construction Line
- Completed Road as Line
- Planned Fuel Break
- Planned Hand Line
- Planned Mixed Construction Line
- Planned Secondary Line
- Uncontained
- Wildfire Daily Fire Perimeter
- USFS Wilderness Study Area Boundary
- Gravel Road
- Unimproved Road
- USFS Motorcycle Trail
- Motorized Trail
- Dirt (Not Paved)



Scale: 1:40,000  
 Page 3 of 6

8/4/2022 2313  
 North American 1983 Datum. LatLong Grid



113°50'W

113°48'W

113°46'W

46°10'N

46°10'N

46°8'N

46°8'N

113°50'W

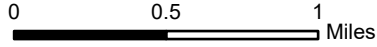
113°48'W

113°46'W

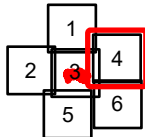
**IAP**  
**Hog Trough**  
**MT-BRF-022161**

8/05/22

771 acres at 8/4/22 0215  
 Acres from IR

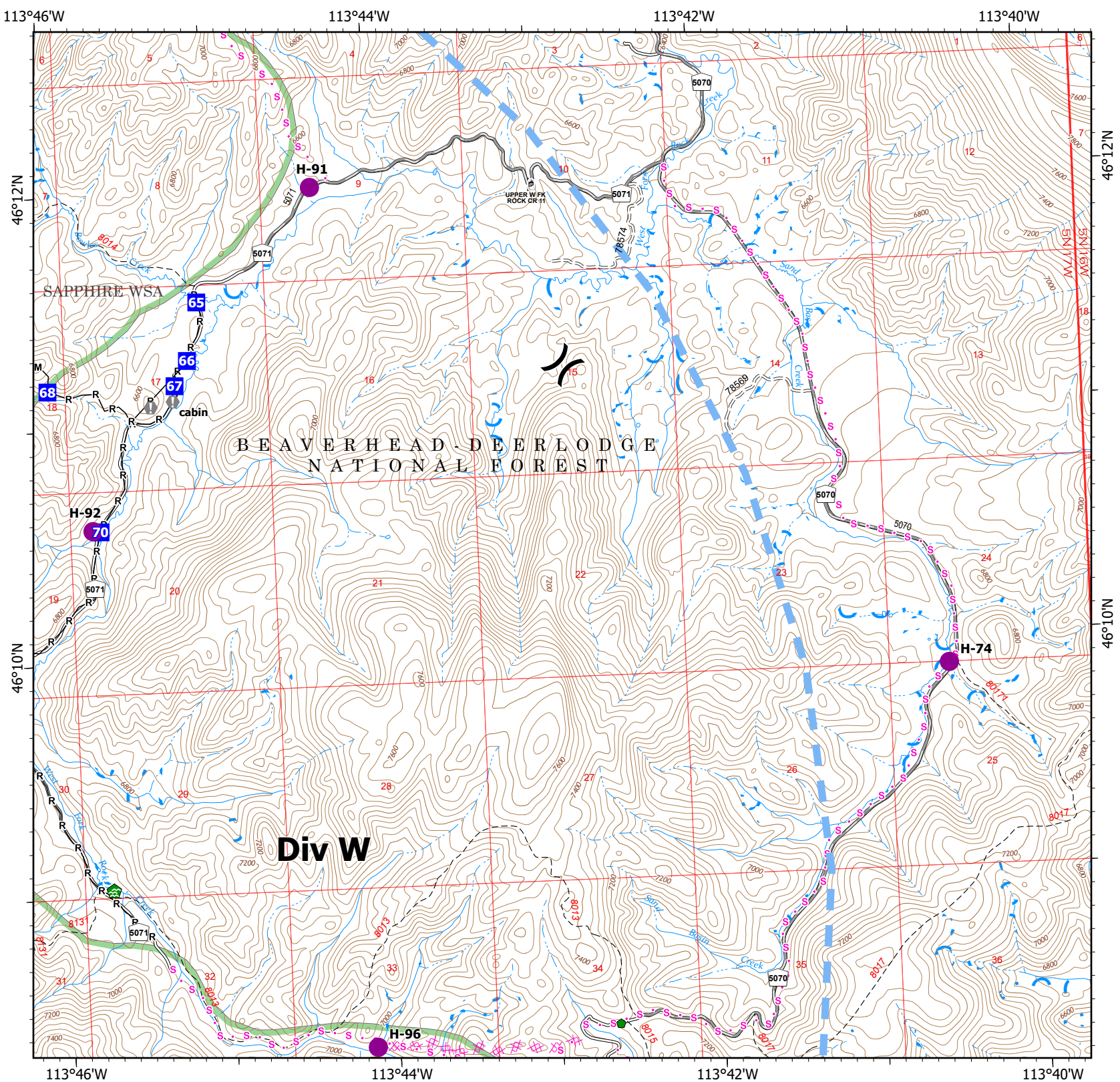


- Helispot
- ) ( Division Break
- Drop Point
- ⚠ Value at Risk
- 🏠 Water Development or Draft Site
- 🔧 Repair Point
- Completed Mixed Construction Line
- Completed Road as Line
- ✂ Planned Dozer Line
- s Planned Secondary Line
- Temporary Flight Restriction
- USFS Wilderness Study Area Boundary
- Gravel Road
- = Unimproved Road
- Dirt (Not Paved)



Scale: 1:40,000  
 Page 4 of 6

8/4/2022 2314  
 North American 1983 Datum. LatLong Grid



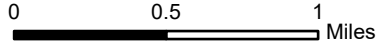
# IAP

## Hog Trough

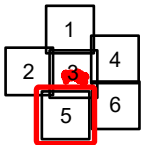
### MT-BRF-022161

8/05/22

771 acres at 8/4/22 0215  
Acres from IR

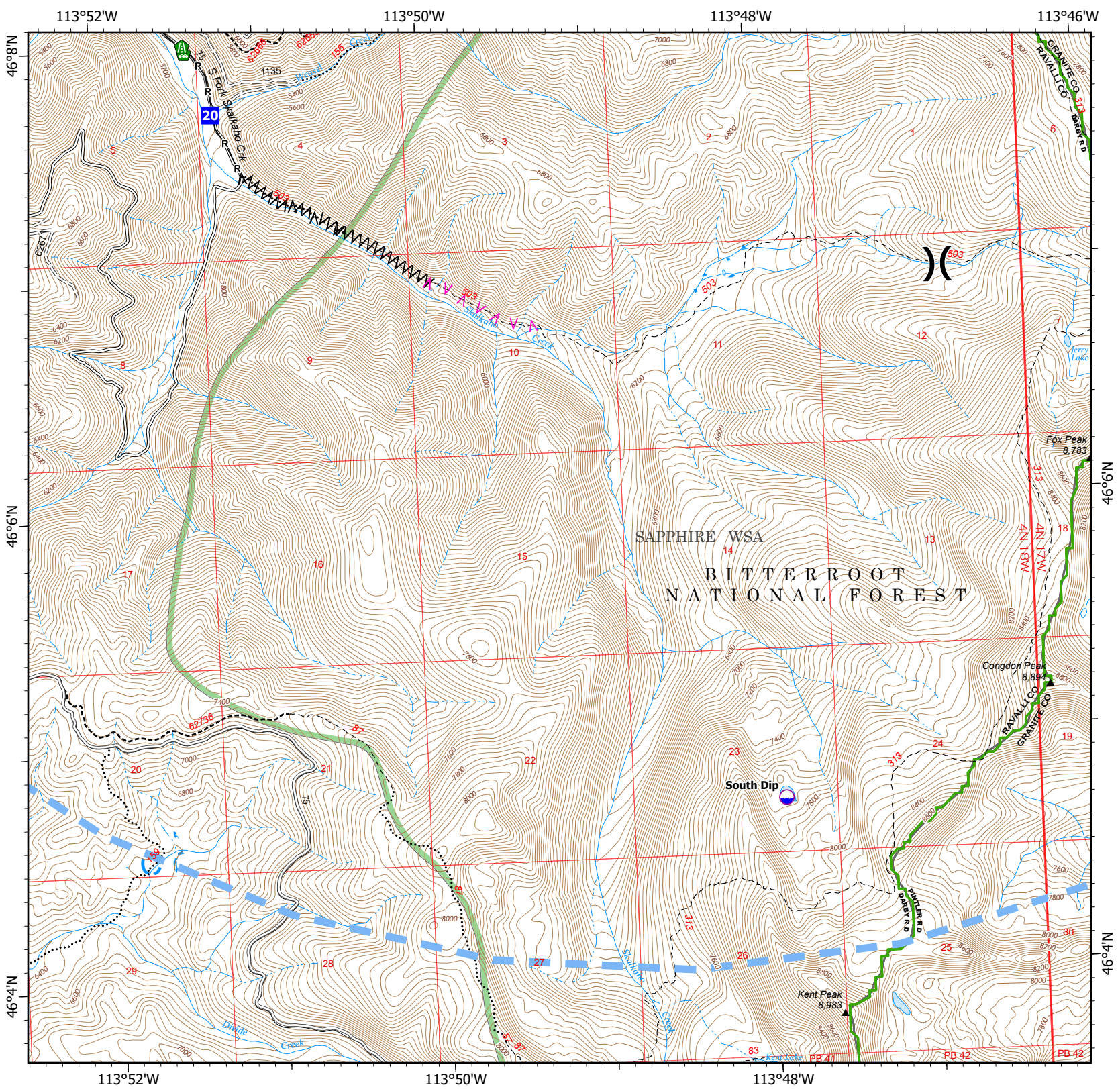


- Dip Site
- Division Break
- Drop Point
- Road Repair
- Landing or Log Deck
- Completed Fuel Break
- Completed Road as Line
- Planned Fuel Break
- Temporary Flight Restriction
- USFS Wilderness Study Area Boundary
- Gravel Road
- Dirt Road
- Unimproved Road
- USFS Motorcycle Trail
- Motorized Trail
- Dirt (Not Paved)



Scale: 1:40,000  
Page 5 of 6

8/4/2022 2314  
North American 1983 Datum. LatLong Grid



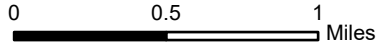
# IAP

## Hog Trough

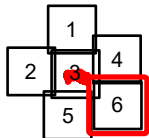
### MT-BRF-022161

8/05/22

771 acres at 8/4/22 0215  
Acres from IR



- Dip Site
- Helispot
- Repair Point
- Planned Dozer Line
- Planned Secondary Line
- Temporary Flight Restriction
- USFS Wilderness Study Area Boundary
- Gravel Road
- Unimproved Road
- Dirt (Not Paved)



Scale: 1:40,000  
Page 6 of 6

8/4/2022 2314  
North American 1983 Datum. LatLong Grid

