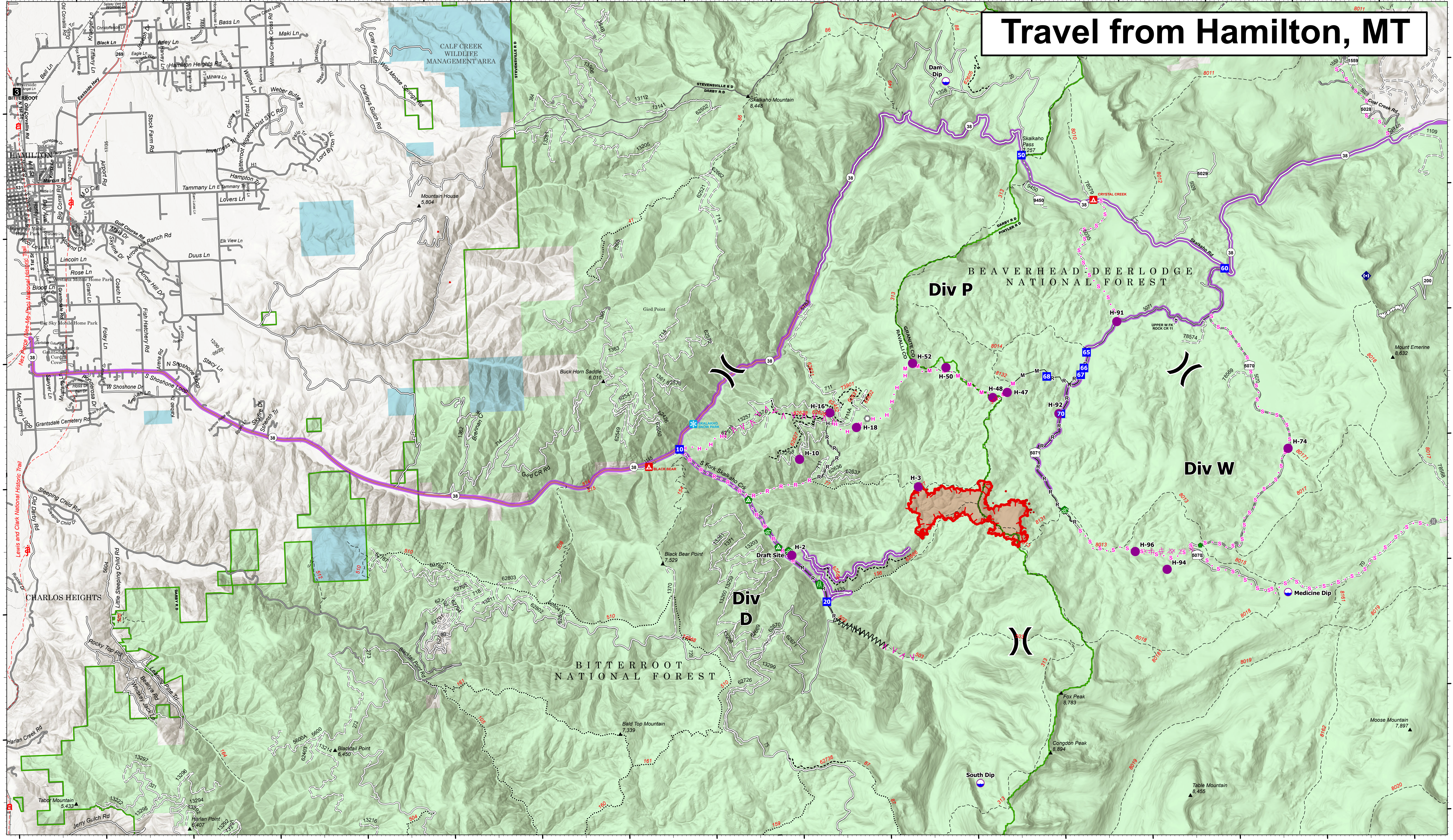
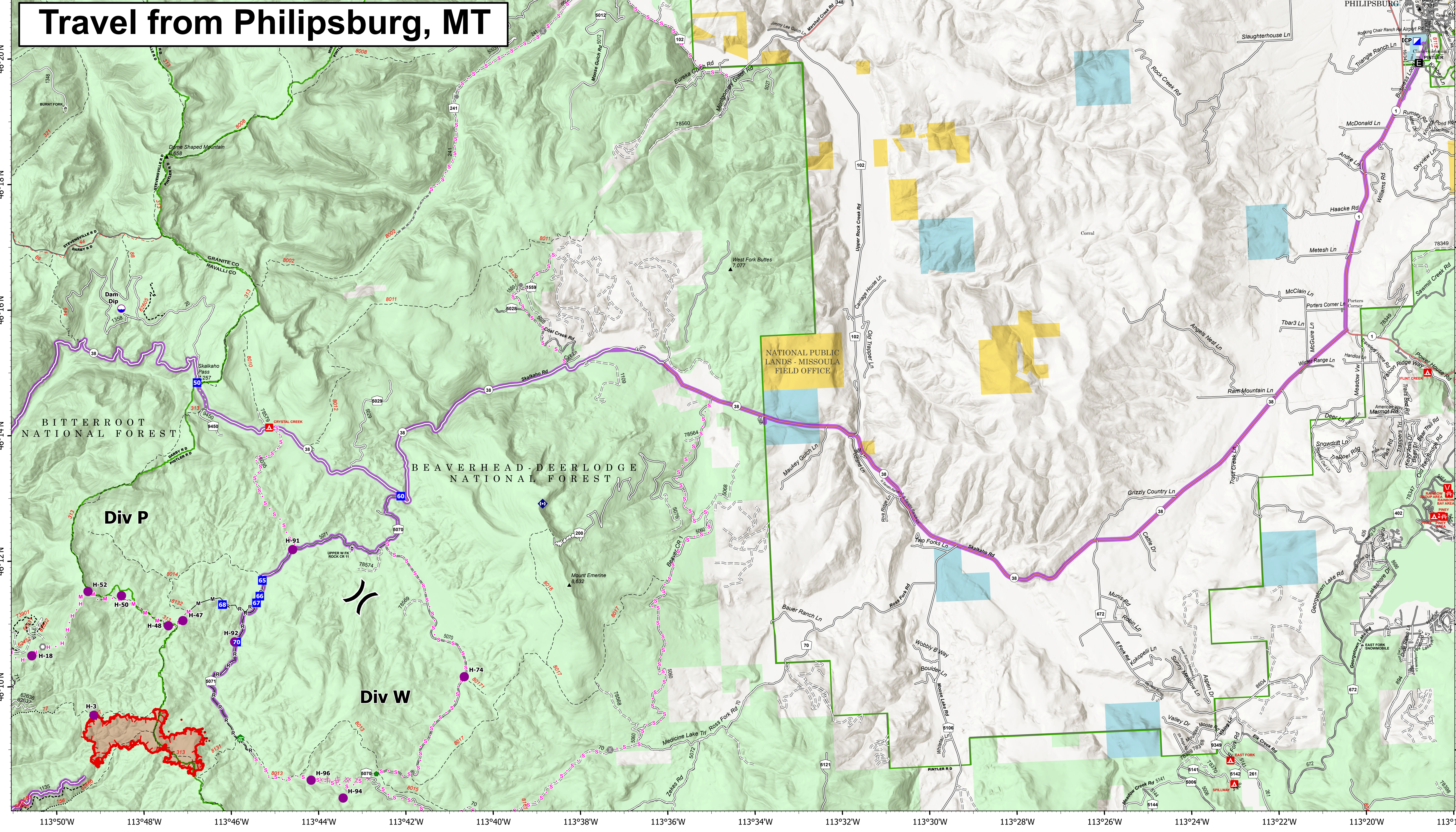


# Travel from Hamilton, MT



# Travel from Philipsburg, MT



## Transportation

Hog Trough  
 MT-BRF-022161  
 8/6/22  
 791 acres at 8/5/22 2151  
 Acres from IR

- |                                 |                                   |                                 |                       |
|---------------------------------|-----------------------------------|---------------------------------|-----------------------|
| Travel Routes                   | Road Repair                       | Planned Fuel Break              | Dirt Road             |
| Dip Site                        | Repair Point                      | Planned Hand Line               | Unimproved Road       |
| Helispot                        | Landing or Log Deck               | Planned Mixed Construction Line | USFS Motorcycle Trail |
| Division Break                  | Repeater                          | Planned Road as Line            | Motorized Trail       |
| Drop Point                      | Completed Fuel Break              | Planned Secondary Line          | Paved Roads           |
| Other                           | Completed Hand Line               | Wildfire Daily Fire Perimeter   | Dirt (Not Paved)      |
| Landmark                        | Completed Mixed Construction Line | State Secondary Route           | Forest Service Land   |
| Bridge                          | Completed Road as Line            | State Route Not Paved           | State Public Lands    |
| Water Development or Draft Site | Planned Dozer Line                | Gravel Road                     |                       |