







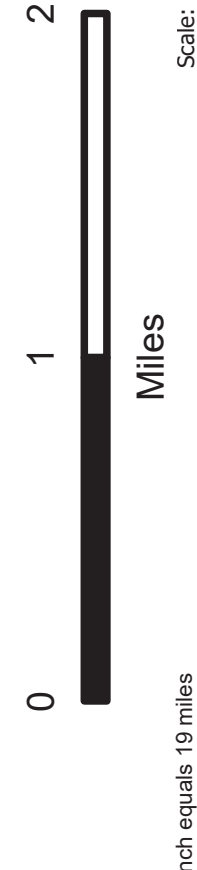
Pilot Map

Hog Trough
 MT-BRF-022161
 798 acres

Fire perimeter updated from
 IFC on 8/06/22 2:55

8/7/22

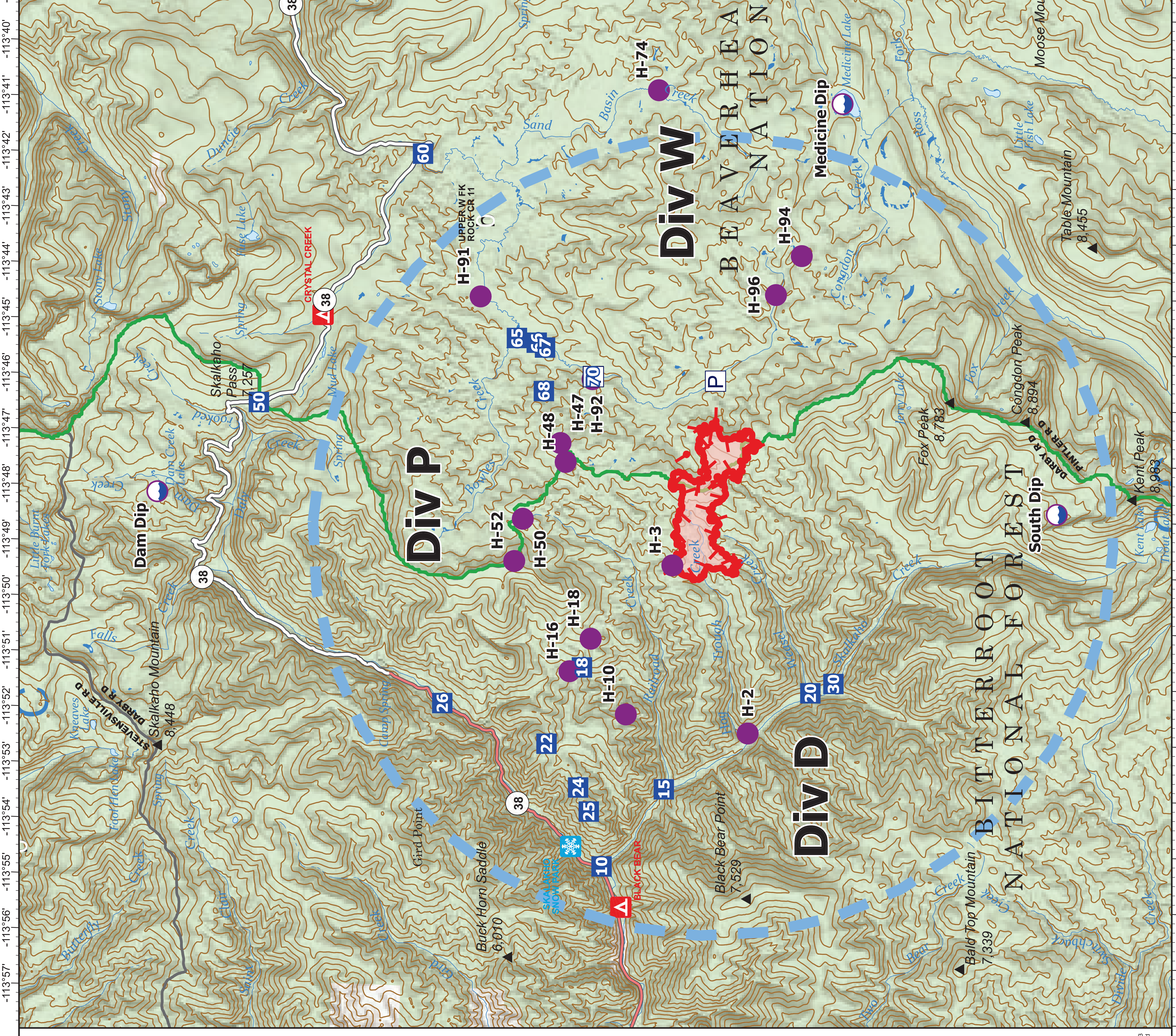
-  Dip Site
-  Helispot
-  Drop Point
-  Temporary Flight Restriction
-  Uncontained
-  Wildfire Daily Fire Perimeter



8/7/2022 06:58
 North American Grid
 Datum: GRS84



FC Point Type	Label	Latitude WGS84 DDM	Longitude WGS84 DDM
Dip Site	Dam Dip	46° 15.954' N	113° 48.054' W
Dip Site	Medicine Dip	46° 07.567' N	113° 40.670' W
Dip Site	South Dip	46° 04.720' N	113° 47.910' W
Drop Point	10	46° 10.244' N	113° 54.514' W
Drop Point	15	46° 09.663' N	113° 51.563' W
Drop Point	18	46° 10.578' N	113° 50.951' W
Drop Point	20	46° 07.716' N	113° 51.289' W
Drop Point	22	46° 10.986' N	113° 52.345' W
Drop Point	24	46° 10.571' N	113° 53.111' W
Drop Point	25	46° 10.428' N	113° 53.537' W
Drop Point	26	46° 12.305' N	113° 51.682' W
Drop Point	30	46° 07.433' N	113° 51.087' W
Drop Point	50	46° 14.726' N	113° 46.385' W
Drop Point	60	46° 12.785' N	113° 41.817' W
Drop Point	65	46° 11.534' N	113° 45.072' W
Drop Point	66	46° 11.285' N	113° 45.145' W
Drop Point	67	46° 11.180' N	113° 45.227' W
Drop Point	68	46° 11.175' N	113° 46.010' W
Drop Point	70	46° 10.564' N	113° 45.723' W
Helispot	H-0	46° 11.057' N	113° 29.592' W
Helispot	H-10	46° 10.009' N	113° 51.767' W
Helispot	H-16	46° 10.732' N	113° 51.027' W
Helispot	H-18	46° 10.482' N	113° 50.430' W
Helispot	H-2	46° 08.480' N	113° 52.030' W
Helispot	H-3	46° 09.491' N	113° 49.059' W
Helispot	H-47	46° 10.945' N	113° 46.933' W
Helispot	H-48	46° 10.872' N	113° 47.270' W
Helispot	H-50	46° 11.382' N	113° 48.318' W
Helispot	H-52	46° 11.470' N	113° 49.082' W
Helispot	H-74	46° 09.867' N	113° 40.532' W
Helispot	H-91	46° 12.005' N	113° 44.347' W
Helispot	H-92	46° 10.573' N	113° 45.765' W
Helispot	H-94	46° 08.015' N	113° 43.424' W
Helispot	H-96	46° 08.320' N	113° 44.140' W



-113°57' -113°56' -113°55' -113°54' -113°53' -113°52' -113°51' -113°50' -113°49' -113°48' -113°47' -113°46' -113°45' -113°44' -113°43' -113°42' -113°41' -113°40' -113°39' -113°38' -113°37' -113°36' -113°35' -113°34' -113°33' -113°32' -113°31' -113°30'

46°18' 46°17' 46°16' 46°15' 46°14' 46°13' 46°12' 46°11' 46°10' 46°9' 46°8' 46°7' 46°6' 46°5' 46°4' 46°3' 46°2' 46°1'