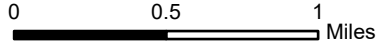


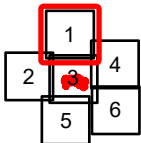
**IAP**  
**Hog Trough**  
**MT-BRF-022161**

8/08/22

798 acres at 8/6/22 2255  
 Acres from IR

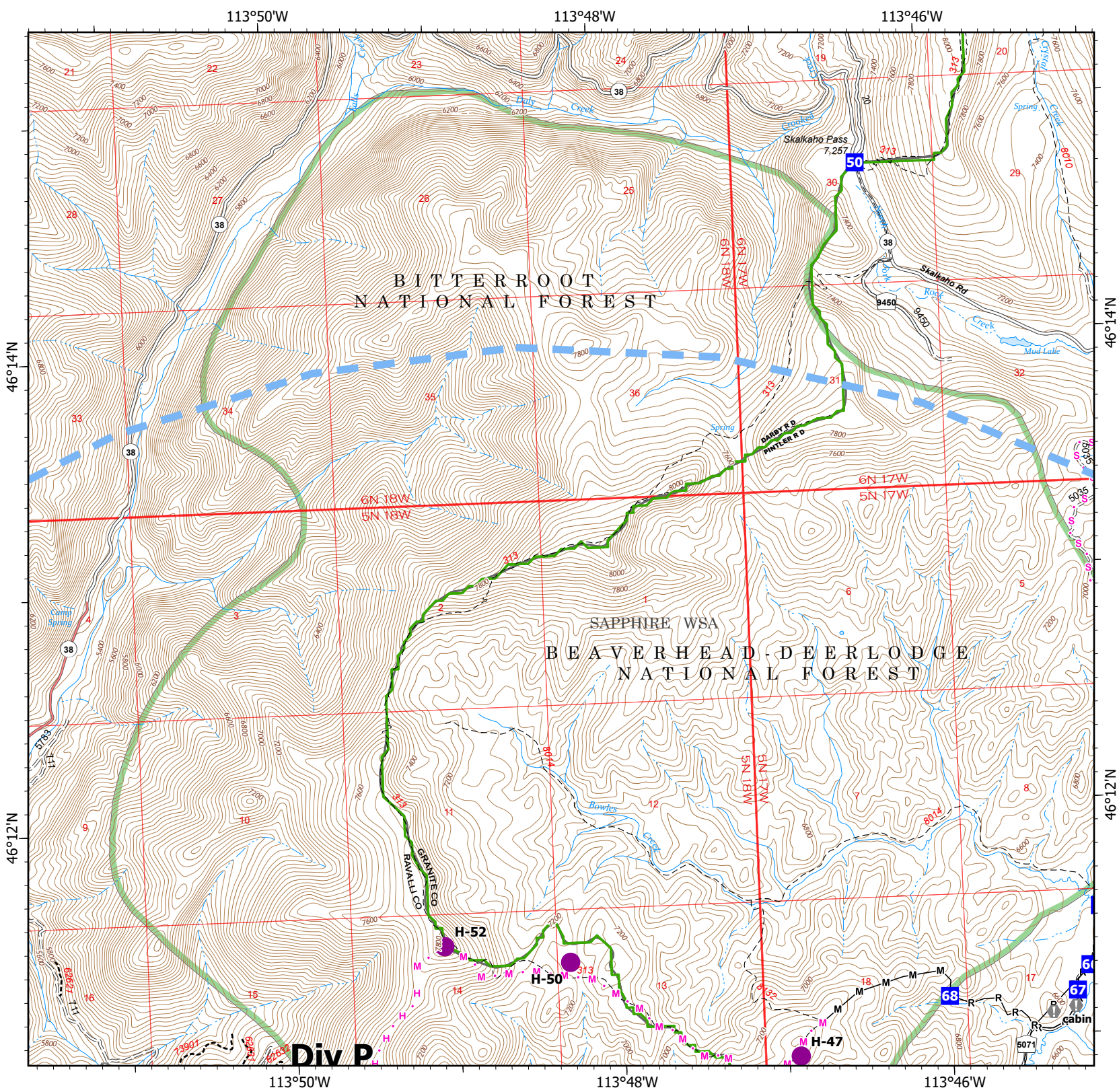


- Helispot
- Drop Point
- Value at Risk
- Completed Mixed Construction Line
- Completed Road as Line
- Planned Hand Line
- Planned Mixed Construction Line
- Planned Secondary Line
- Temporary Flight Restriction
- USFS Wilderness Study Area Boundary
- Dirt Road
- = Unimproved Road
- Motorized Trail
- Dirt (Not Paved)



Scale: 1:40,000  
 Page 1 of 6

8/7/2022 2106  
 North American 1983 Datum. LatLong Grid



**Div P**

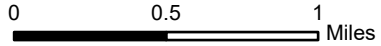


# IAP

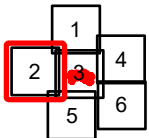
## Hog Trough MT-BRF-022161

8/08/22

798 acres at 8/6/22 2255  
Acres from IR



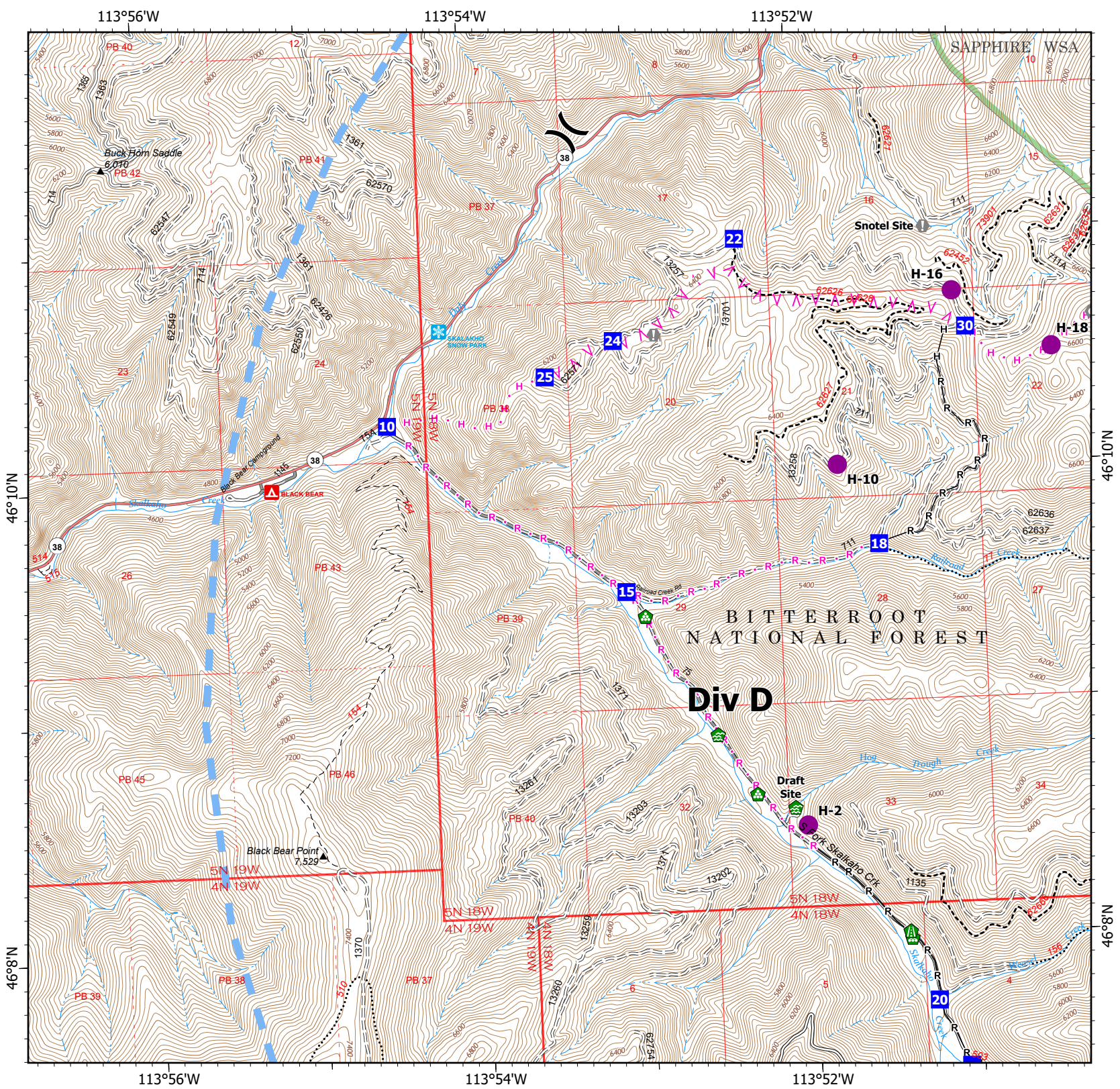
- Helispot
- )( Division Break
- 22 Drop Point
- ⚠ Value at Risk
- Landmark
- 🏠 Water Development or Draft Site
- 🛣️ Road Repair
- 🏠 Landing or Log Deck
- ⏏ Completed Fuel Break
- Completed Hand Line
- Completed Road as Line
- ^ Planned Fuel Break
- Planned Hand Line
- Planned Road as Line
- ▭ Temporary Flight Restriction
- ▭ USFS Wilderness Study Area Boundary
- Gravel Road
- Dirt Road
- = Unimproved Road
- ⋯ USFS Motorcycle Trail
- - - Motorized Trail
- Paved Roads
- Dirt (Not Paved)



Scale: 1:40,000  
Page 2 of 6

8/7/2022 2106

North American 1983 Datum. Lat/Long Grid



113°56'W

113°54'W

113°52'W

46°10'N

46°8'N

46°10'N

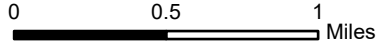
46°8'N



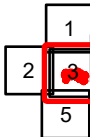
**IAP**  
**Hog Trough**  
**MT-BRF-022161**

8/08/22

798 acres at 8/6/22 2255  
 Acres from IR

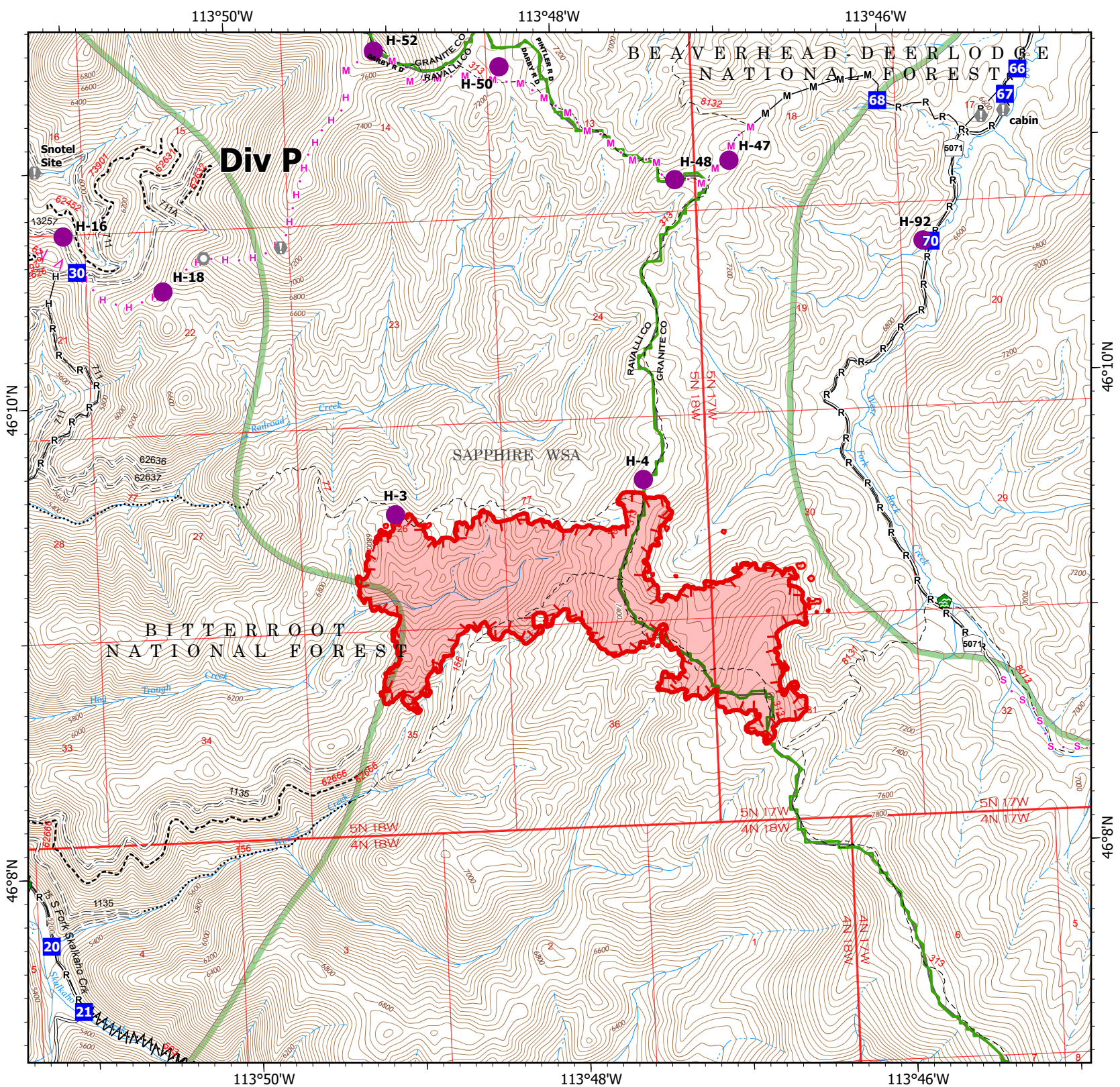


- Helispot
- Drop Point
- Value at Risk
- Landmark
- Water Development or Draft Site
- Road Repair
- Landing or Log Deck
- Completed Fuel Break
- Completed Hand Line
- Completed Mixed Construction Line
- Completed Road as Line
- Planned Fuel Break
- Planned Hand Line
- Planned Mixed Construction Line
- Planned Secondary Line
- Uncontained
- Wildfire Daily Fire Perimeter
- USFS Wilderness Study Area Boundary
- Gravel Road
- Unimproved Road
- USFS Motorcycle Trail
- Motorized Trail
- Dirt (Not Paved)



Scale: 1:40,000  
 Page 3 of 6

8/7/2022 2106  
 North American 1983 Datum. LatLong Grid

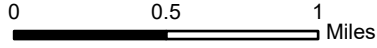




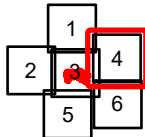
**IAP**  
**Hog Trough**  
**MT-BRF-022161**

8/08/22

798 acres at 8/6/22 2255  
 Acres from IR

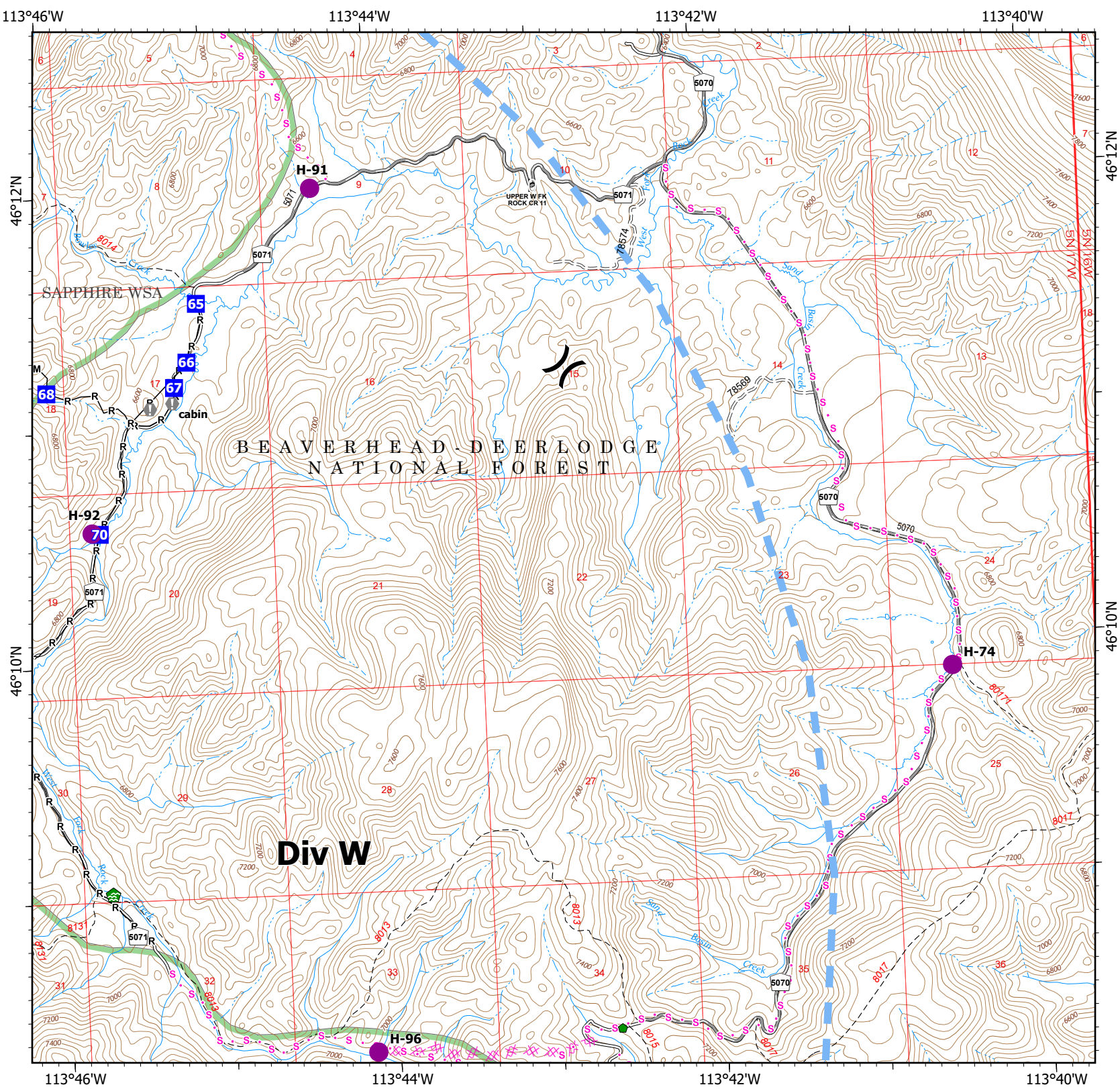


- Helispot
- ) Division Break
- Drop Point
- ⚠ Value at Risk
- 🏠 Water Development or Draft Site
- 🔧 Repair Point
- Completed Mixed Construction Line
- Completed Road as Line
- ✂ Planned Dozer Line
- s Planned Secondary Line
- Temporary Flight Restriction
- ▭ USFS Wilderness Study Area Boundary
- Gravel Road
- = Unimproved Road
- Dirt (Not Paved)



Scale: 1:40,000  
 Page 4 of 6

8/7/2022 2106  
 North American 1983 Datum. LatLong Grid





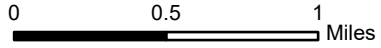
# IAP

## Hog Trough

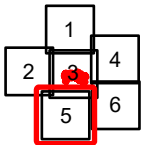
### MT-BRF-022161

8/08/22

798 acres at 8/6/22 2255  
Acres from IR

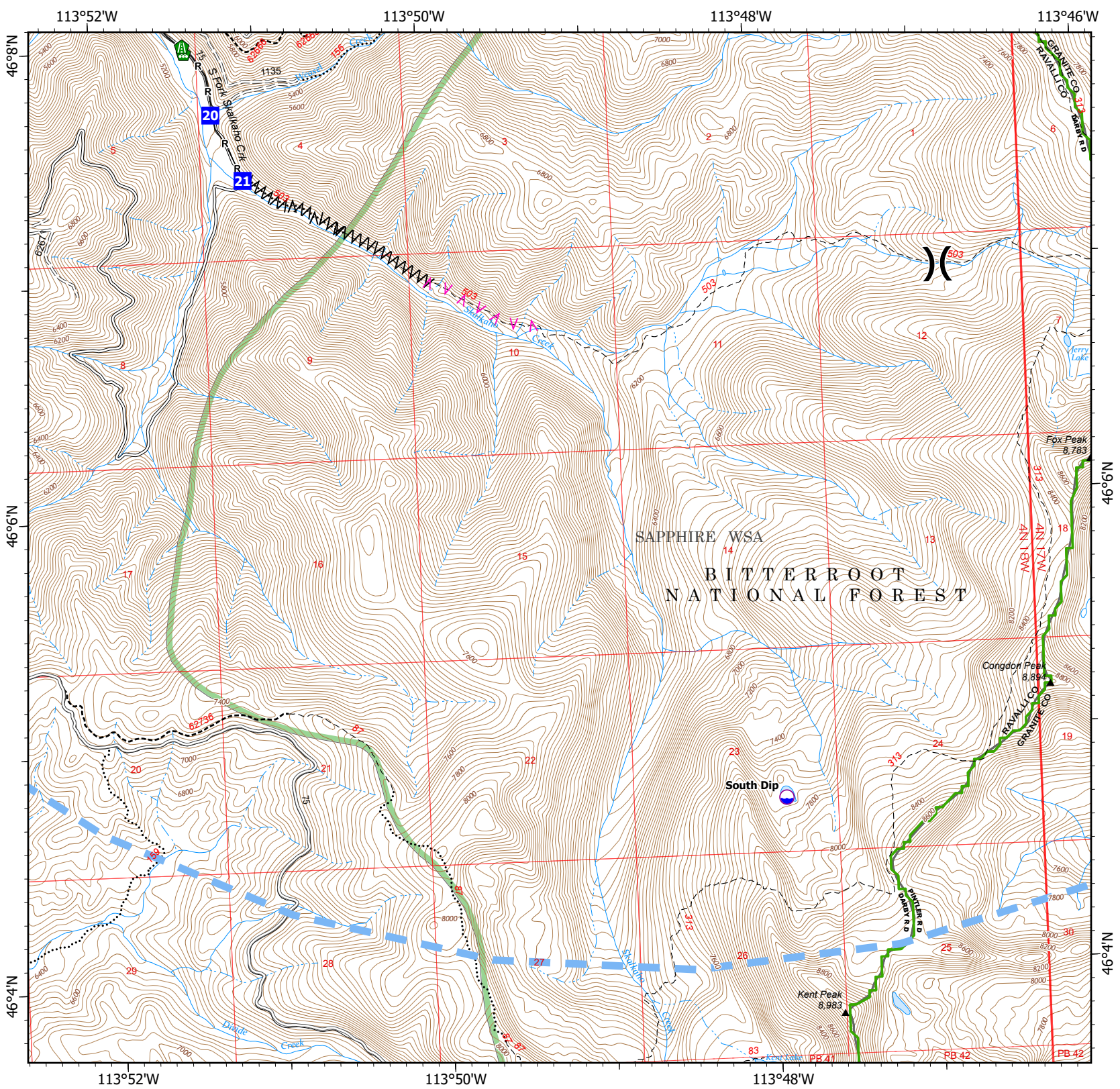


- Dip Site
- Division Break
- Drop Point
- Road Repair
- Landing or Log Deck
- Completed Fuel Break
- Completed Road as Line
- Planned Fuel Break
- Temporary Flight Restriction
- USFS Wilderness Study Area Boundary
- Gravel Road
- Dirt Road
- Unimproved Road
- USFS Motorcycle Trail
- Motorized Trail
- Dirt (Not Paved)



Scale: 1:40,000  
Page 5 of 6

8/7/2022 2106  
North American 1983 Datum. LatLong Grid

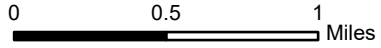




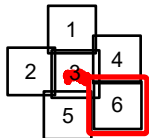
**IAP**  
**Hog Trough**  
**MT-BRF-022161**

8/08/22

798 acres at 8/6/22 2255  
 Acres from IR



- Dip Site
- Helispot
- Repair Point
- Planned Dozer Line
- Planned Secondary Line
- Temporary Flight Restriction
- USFS Wilderness Study Area Boundary
- Gravel Road
- Unimproved Road
- Dirt (Not Paved)



Scale: 1:40,000  
 Page 6 of 6

8/7/2022 2106  
 North American 1983 Datum. LatLong Grid

