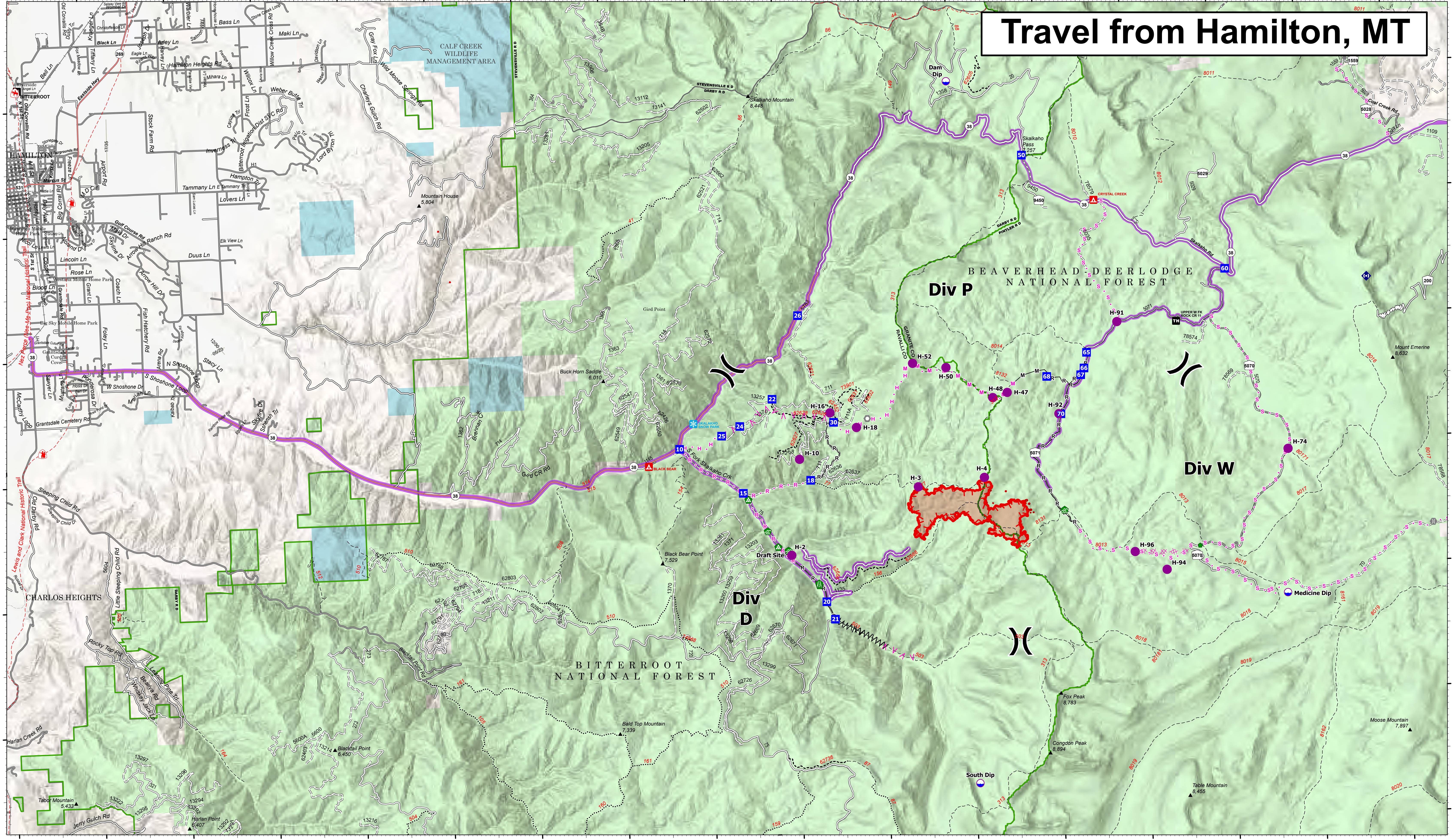
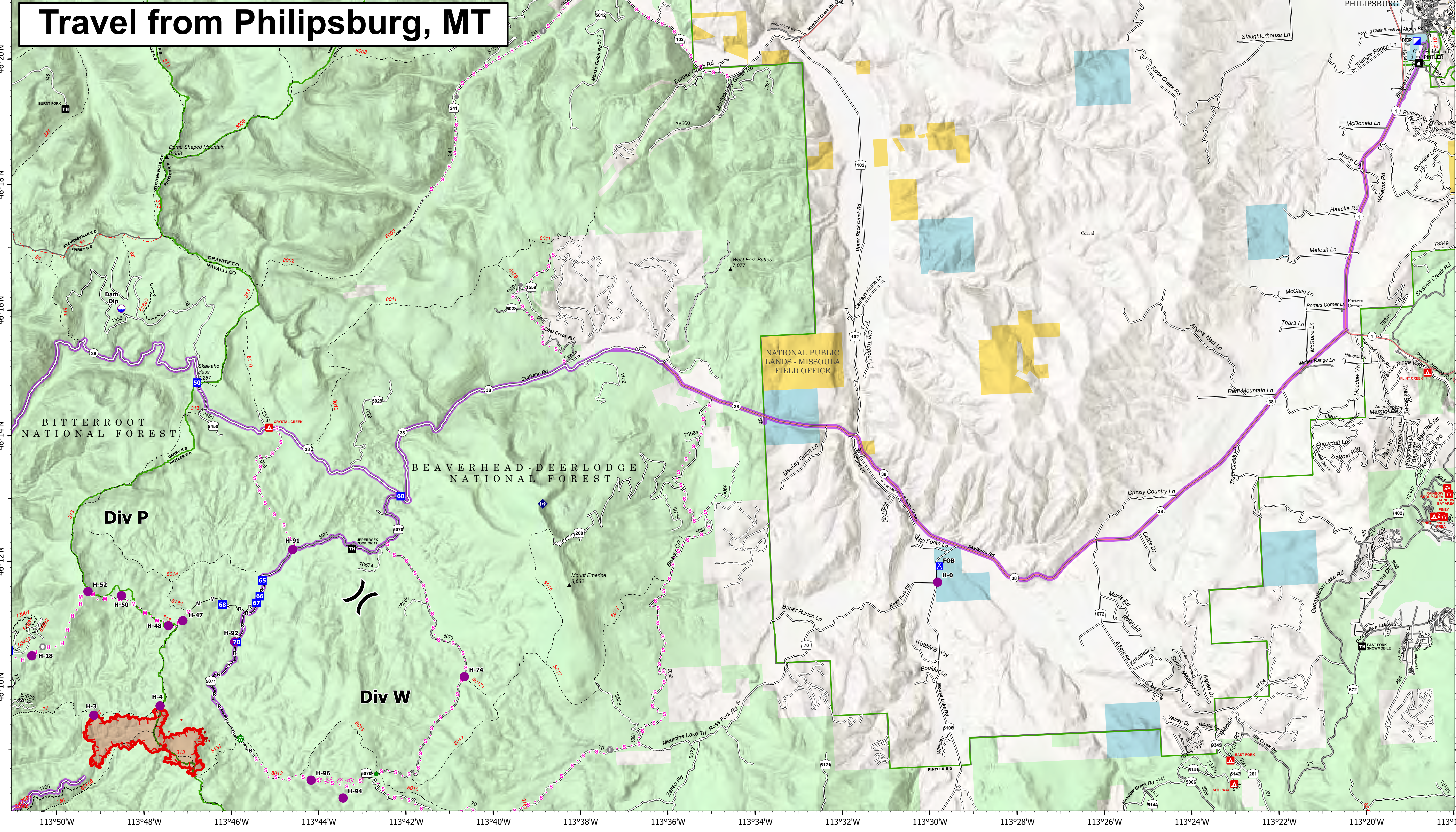


Travel from Hamilton, MT



Travel from Philipsburg, MT



Transportation

Hog Trough
 MT-BRF-022161
 8/8/22
 798 acres at 8/6/22 2255
 Acres from IR

- | | | | |
|---------------------------------|-----------------------------------|---------------------------------|-----------------------|
| Travel Routes | Road Repair | Planned Fuel Break | Dirt Road |
| Dip Site | Repair Point | Planned Hand Line | Unimproved Road |
| Helispot | Landing or Log Deck | Planned Mixed Construction Line | USFS Motorcycle Trail |
| Division Break | Repeater | Planned Road as Line | Motorized Trail |
| Drop Point | Completed Fuel Break | Planned Secondary Line | Paved Roads |
| Other | Completed Hand Line | Wildfire Daily Fire Perimeter | Dirt (Not Paved) |
| Landmark | Completed Mixed Construction Line | State Secondary Route | Forest Service Land |
| Bridge | Completed Road as Line | State Route Not Paved | State Public Lands |
| Water Development or Draft Site | Planned Dozer Line | Gravel Road | |