

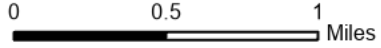
# IAP

## Hog Trough

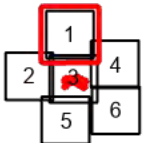
### MT-BRF-022161

8/10/22

824 acres at 8/8/22 2217  
Acres from IR

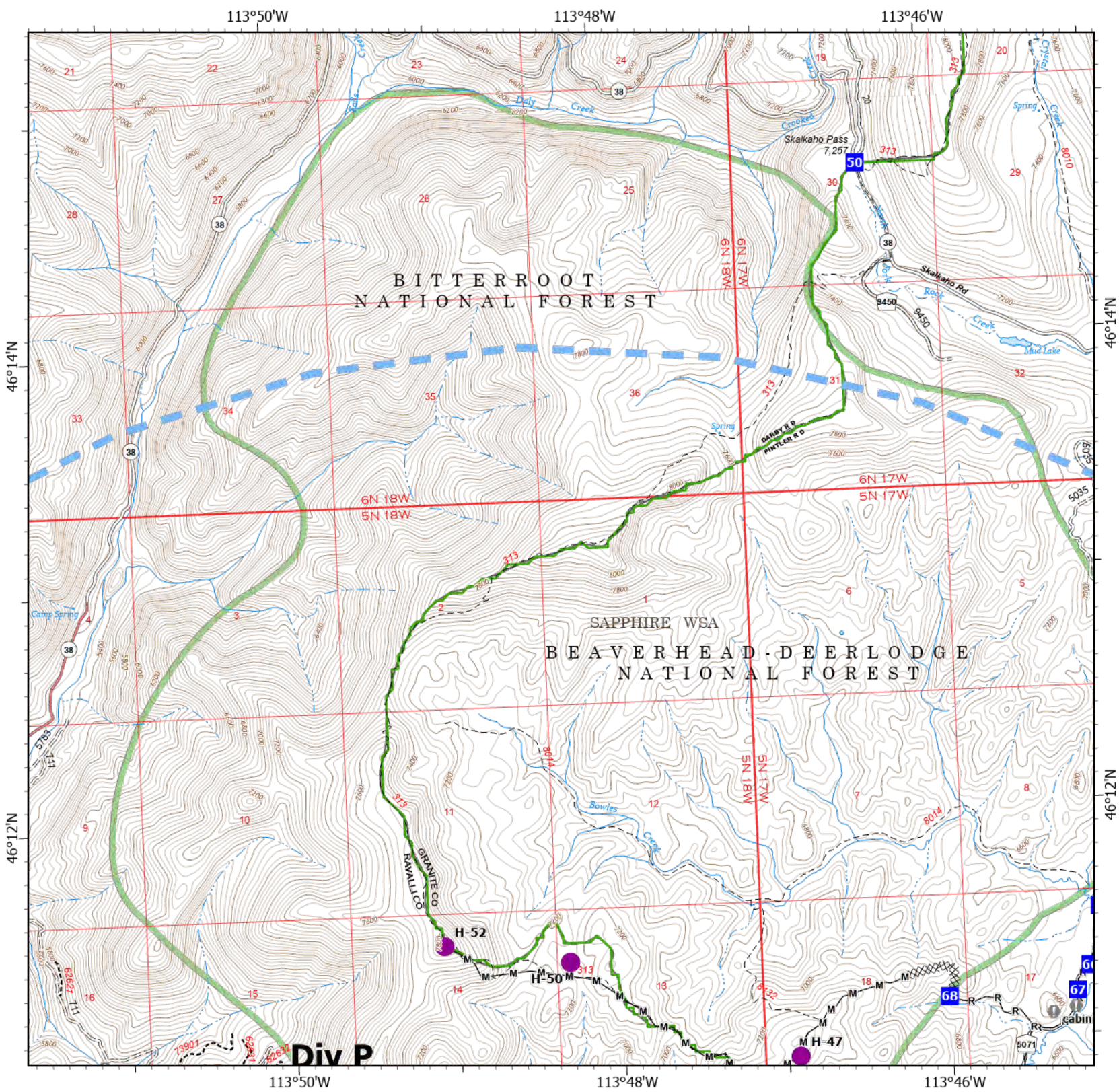


- Helispot
- Drop Point
- ▲ Camp
- Value at Risk
- XXXX Completed Dozer Line
- M— Completed Mixed Construction Line
- R— Completed Road as Line
- Temporary Flight Restriction
- USFS Wilderness Study Area Boundary
- Dirt Road
- Unimproved Road
- Motorized Trail
- Dirt (Not Paved)



Scale: 1:40,000  
Page 1 of 6

8/10/2022 0732  
North American 1983 Datum. Lat/Long Grid





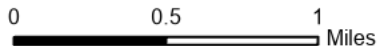
# IAP

## Hog Trough

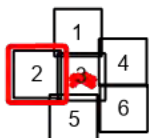
### MT-BRF-022161

8/10/22

824 acres at 8/8/22 2217  
Acres from IR

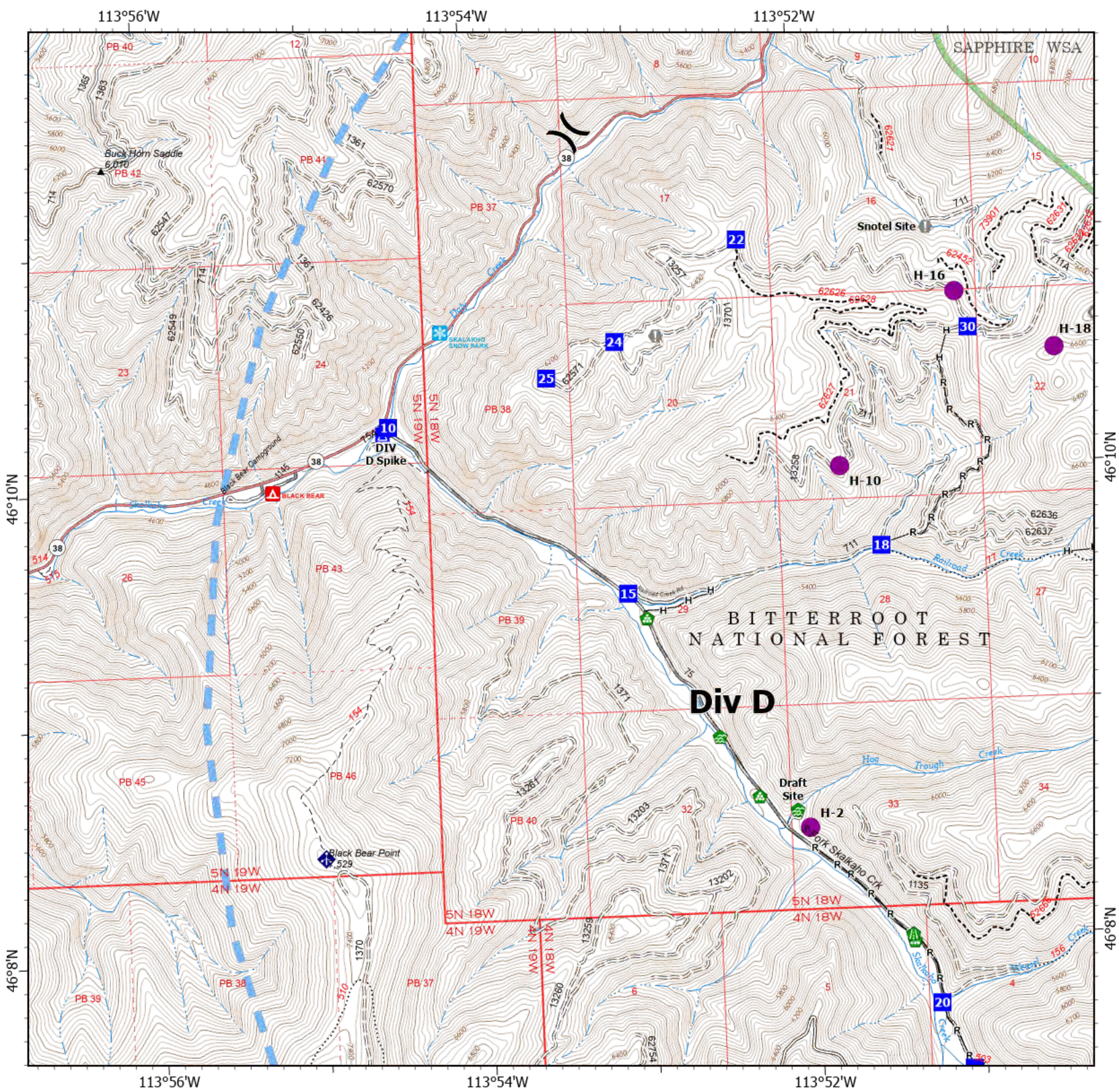


- Helispot
- ) Division Break
- Drop Point
- ▲ Camp
- Value at Risk
- Landmark
- Water Development or Draft Site
- Road Repair
- Landing or Log Deck
- Mobile Weather Unit
- Completed Fuel Break
- Completed Hand Line
- Completed Road as Line
- Temporary Flight Restriction
- USFS Wilderness Study Area Boundary
- Gravel Road
- Dirt Road
- Unimproved Road
- USFS Motorcycle Trail
- Motorized Trail
- Paved Roads
- Dirt (Not Paved)



Scale: 1:40,000  
Page 2 of 6

8/10/2022 0732  
North American 1983 Datum. Lat/Long Grid

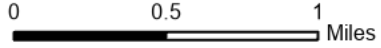




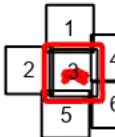
**IAP**  
**Hog Trough**  
**MT-BRF-022161**

8/10/22

824 acres at 8/8/22 2217  
 Acres from IR

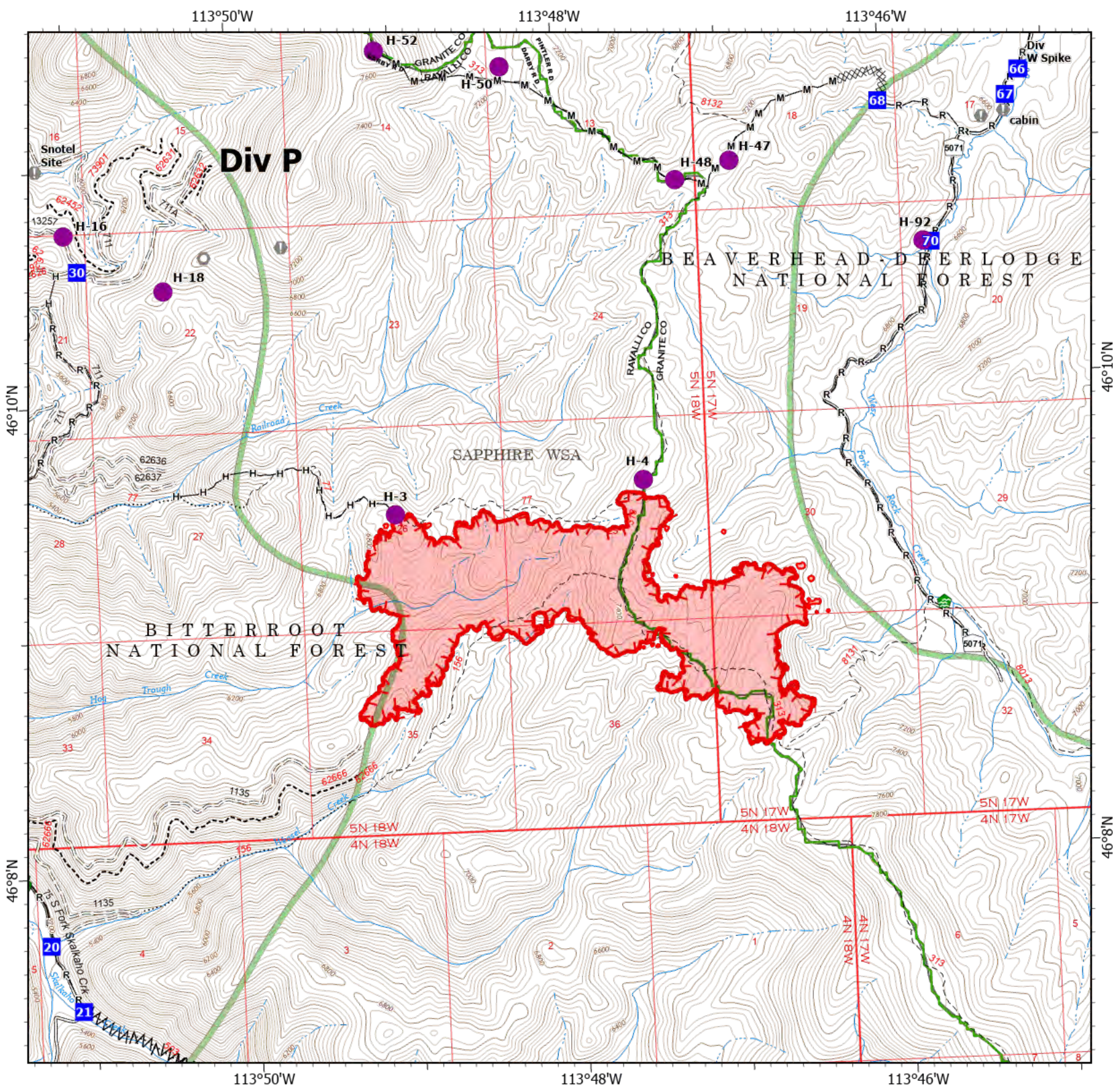


- Helispot
- Drop Point
- ▲ Camp
- Value at Risk
- Landmark
- 🏠 Water Development or Draft Site
- 🛠️ Road Repair
- 🏠 Landing or Log Deck
- XXXX Completed Dozer Line
- ≡≡≡ Completed Fuel Break
- H— Completed Hand Line
- M— Completed Mixed Construction Line
- R— Completed Road as Line
- ▭ Uncontained
- ▭ Wildfire Daily Fire Perimeter
- ▭ USFS Wilderness Study Area Boundary
- Gravel Road
- == Unimproved Road
- ⋯ USFS Motorcycle Trail
- - - Motorized Trail
- Dirt (Not Paved)



Scale: 1:40,000  
 Page 3 of 6

8/10/2022 0732  
 North American 1983 Datum. Lat/Long Grid





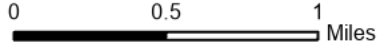
# IAP

## Hog Trough

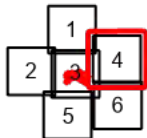
### MT-BRF-022161

8/10/22

824 acres at 8/8/22 2217  
Acres from IR

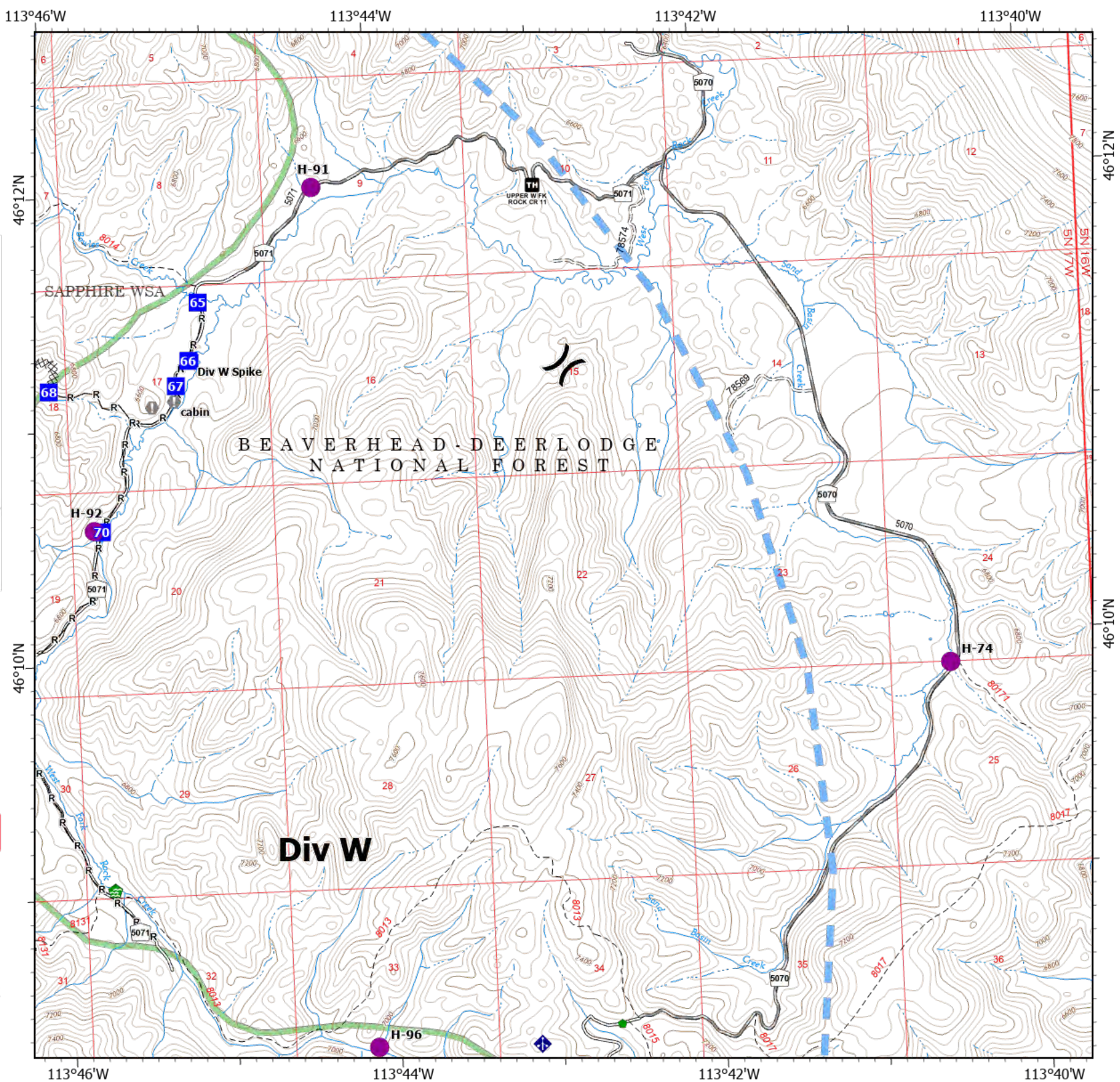


- Helispot
- ) ( Division Break
- Drop Point
- ▲ Camp
- ⊙ Value at Risk
- 🏠 Water Development or Draft Site
- Repair Point
- 📡 Mobile Weather Unit
- XXXX Completed Dozer Line
- Completed Road as Line
- Temporary Flight Restriction
- USFS Wilderness Study Area Boundary
- Gravel Road
- Unimproved Road
- Dirt (Not Paved)



Scale: 1:40,000  
Page 4 of 6

8/10/2022 0733  
North American 1983 Datum. Lat/Long Grid





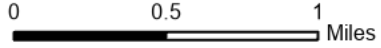
# IAP

## Hog Trough

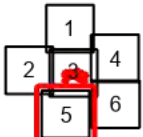
### MT-BRF-022161

8/10/22

824 acres at 8/8/22 2217  
Acres from IR

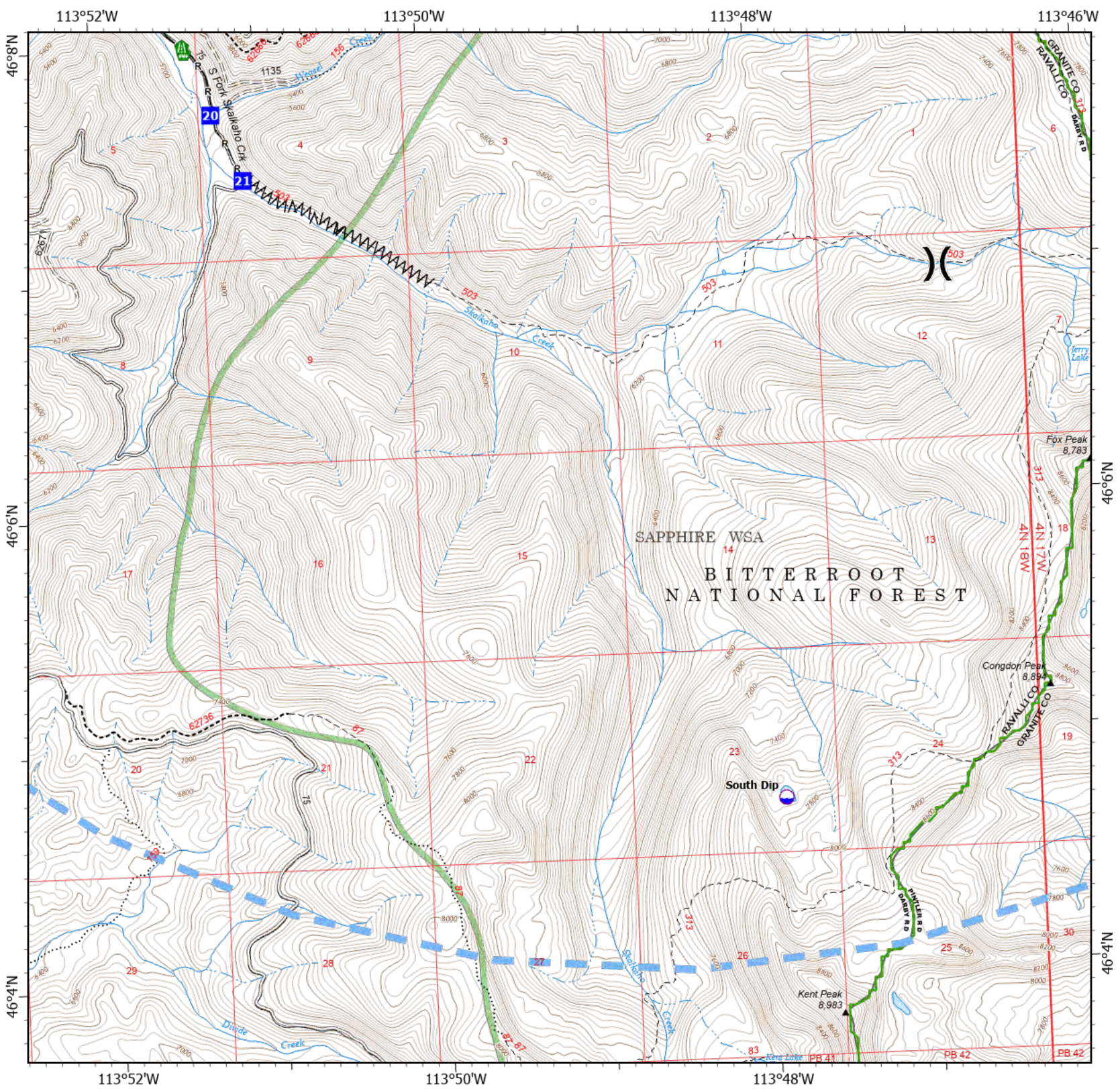


- Dip Site
- Division Break
- Drop Point
- Road Repair
- Landing or Log Deck
- Completed Fuel Break
- Completed Road as Line
- Temporary Flight Restriction
- USFS Wilderness Study Area Boundary
- Gravel Road
- Dirt Road
- Unimproved Road
- USFS Motorcycle Trail
- Motorized Trail
- Dirt (Not Paved)



Scale: 1:40,000  
Page 5 of 6

8/10/2022 0733  
North American 1983 Datum. Lat/Long Grid





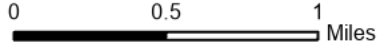
# IAP

## Hog Trough

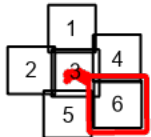
### MT-BRF-022161

8/10/22

824 acres at 8/8/22 2217  
Acres from IR



- Dip Site
- Helispot
- Repair Point
- Mobile Weather Unit
- Completed Hand Line
- Temporary Flight Restriction
- USFS Wilderness Study Area Boundary
- Gravel Road
- Unimproved Road
- Dirt (Not Paved)



Scale: 1:40,000  
Page 6 of 6

8/10/2022 0733  
North American 1983 Datum. Lat/Long Grid

