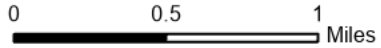


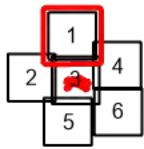
**IAP**  
**Hog Trough**  
**MT-BRF-022161**

8/11/22

824 acres at 8/8/22 2217  
 Acres from IR

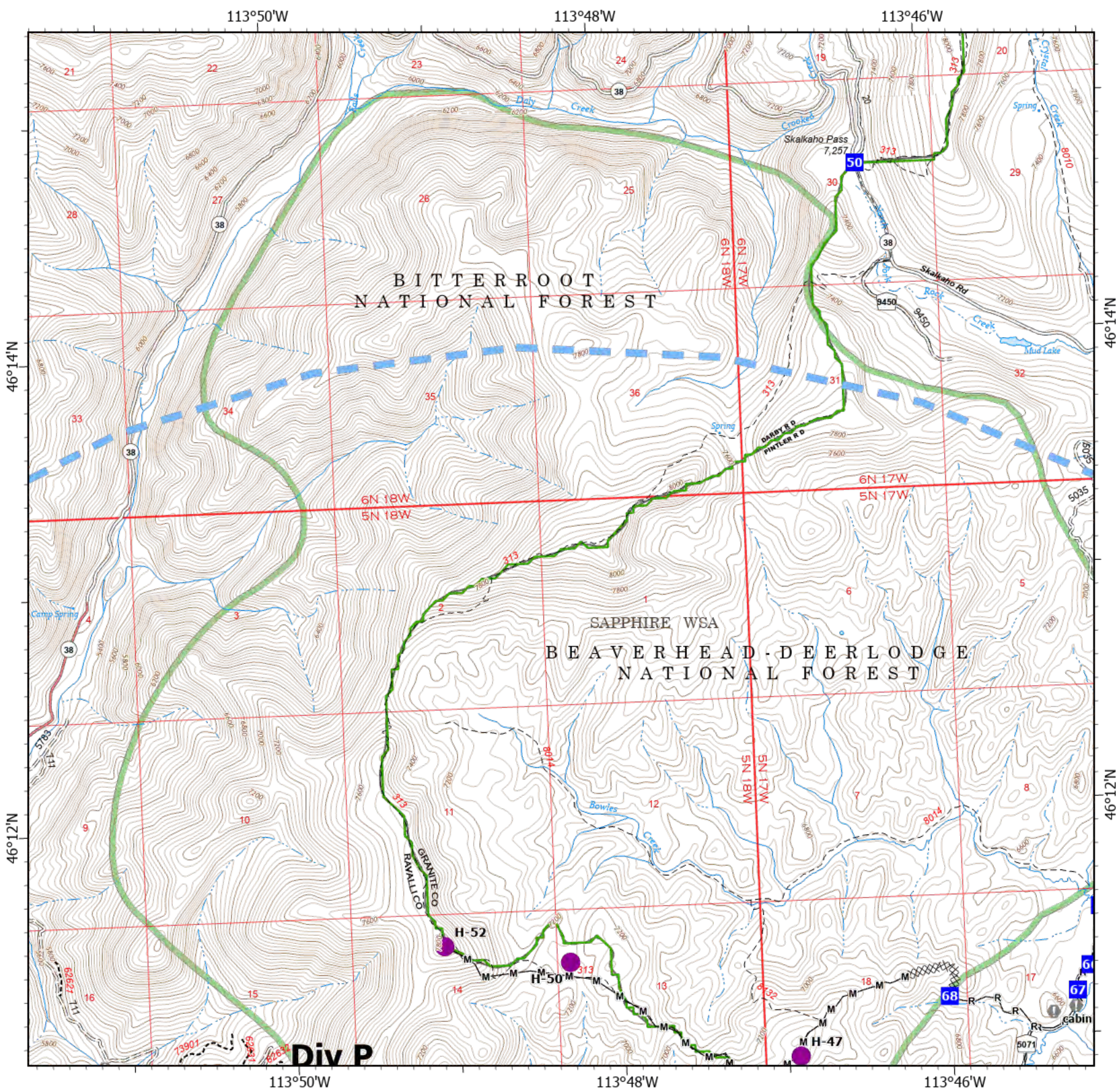


- Helispot
- Drop Point
- Camp
- Value at Risk
- Completed Dozer Line
- Completed Mixed Construction Line
- Completed Road as Line
- Temporary Flight Restriction
- USFS Wilderness Study Area Boundary
- Dirt Road
- Unimproved Road
- Motorized Trail
- Dirt (Not Paved)



Scale: 1:40,000  
 Page 1 of 6

8/10/2022 1947  
 North American 1983 Datum. Lat/Long Grid



**Div P**

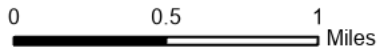
# IAP

## Hog Trough

### MT-BRF-022161

8/11/22

824 acres at 8/8/22 2217  
Acres from IR

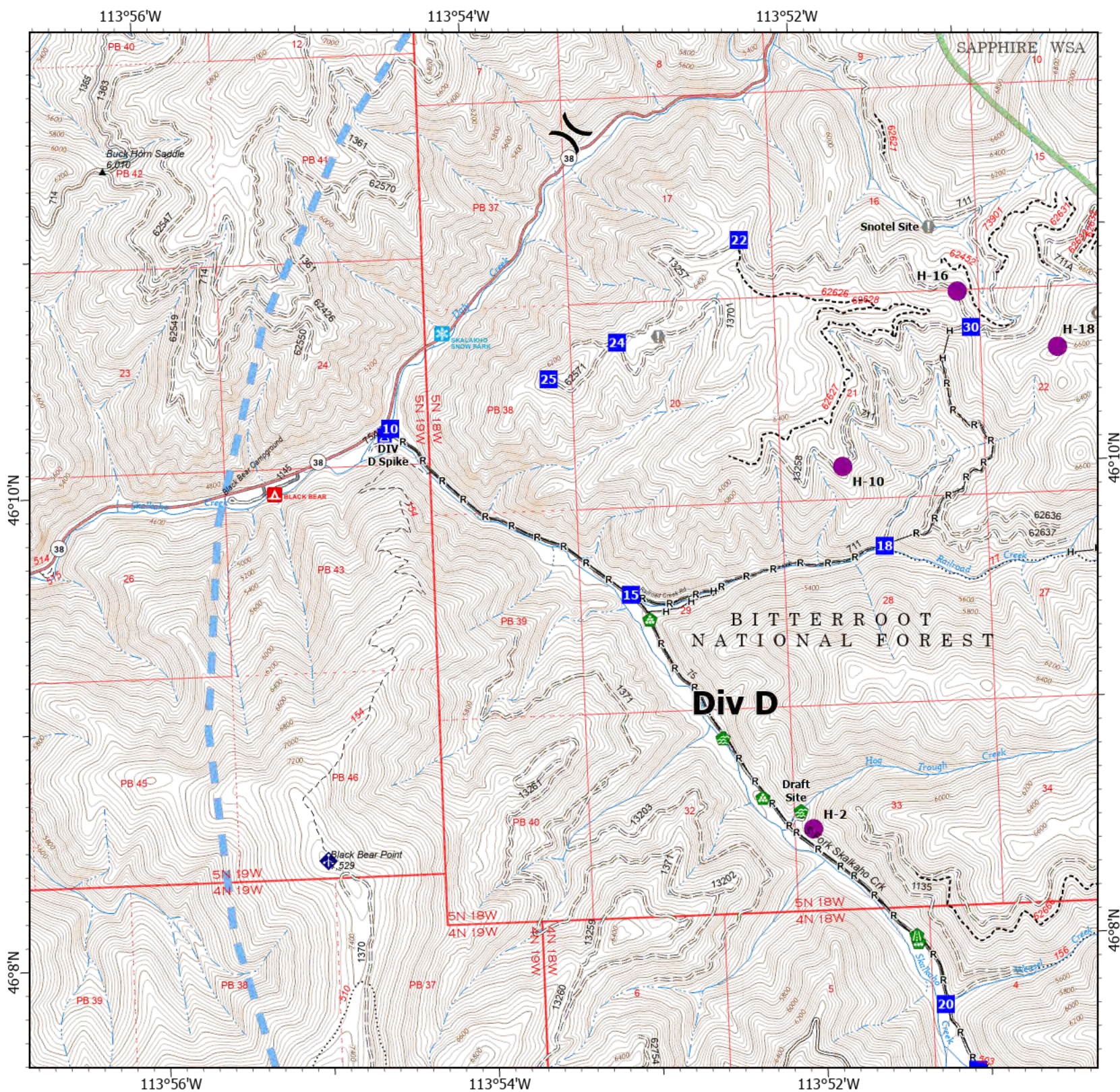


- Helispot
- Division Break
- Drop Point
- Camp
- Value at Risk
- Landmark
- Water Development or Draft Site
- Road Repair
- Landing or Log Deck
- Mobile Weather Unit
- Completed Fuel Break
- Completed Hand Line
- Completed Road as Line
- Temporary Flight Restriction
- USFS Wilderness Study Area Boundary
- |   |   |   |   |
|---|---|---|---|
| 1 | 2 | 3 | 4 |
| 5 | 6 |   |   |
- USFS Motorcycle Trail
- Motorized Trail
- Paved Roads
- Dirt (Not Paved)



Scale: 1:40,000  
Page 2 of 6

8/10/2022 1947  
North American 1983 Datum. Lat/Long Grid



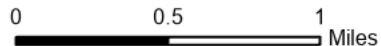
113°56'W 113°54'W 113°52'W 46°10'N 46°8'N

# IAP

## Hog Trough MT-BRF-022161

8/11/22

824 acres at 8/8/22 2217  
Acres from IR

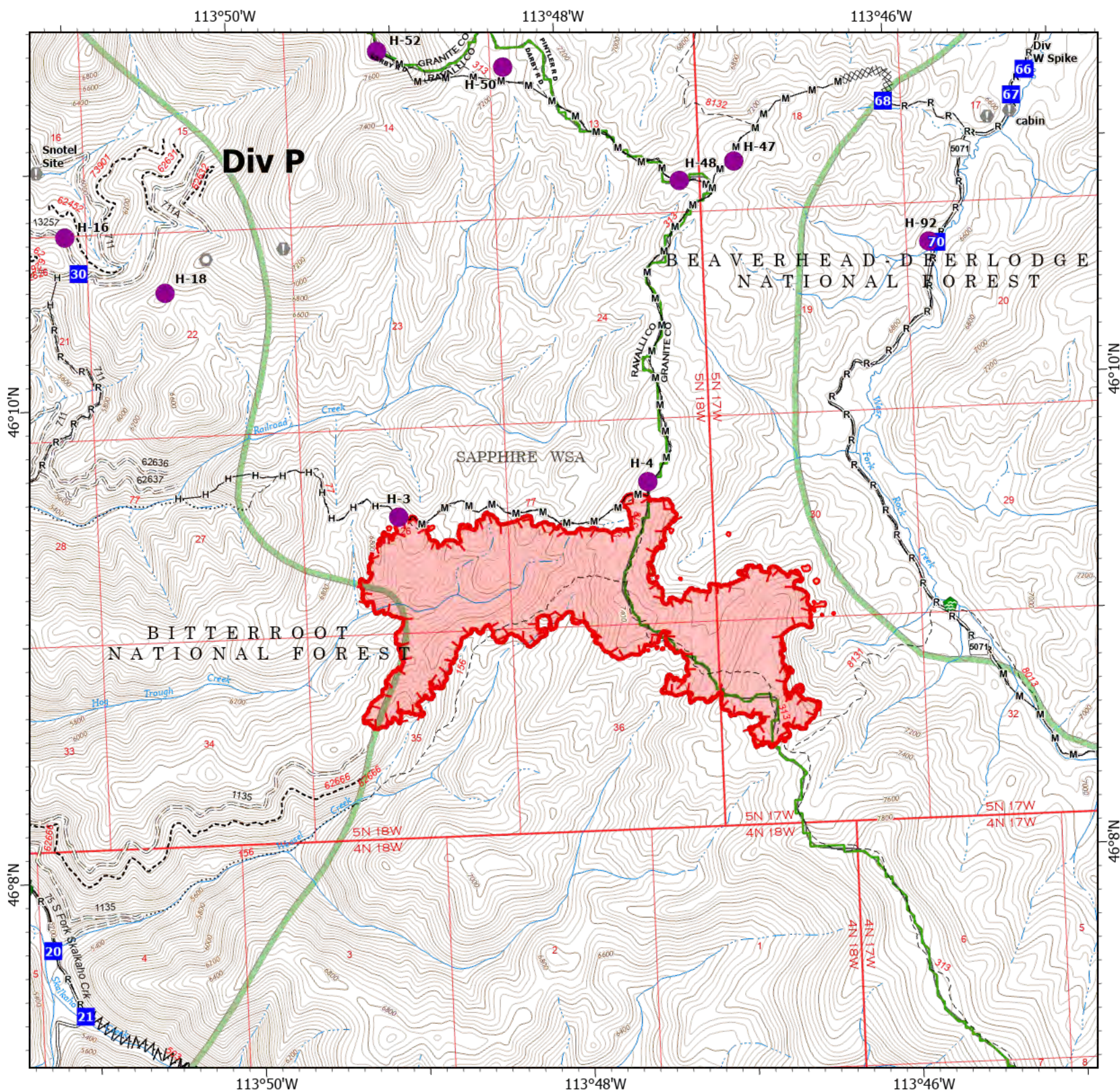


- Helispot
- Drop Point
- ▲ Camp
- Value at Risk
- Landmark
- 🏠 Water Development or Draft Site
- 🛠️ Road Repair
- 🚚 Landing or Log Deck
- ⊗ Completed Dozer Line
- ⚡ Completed Fuel Break
- Completed Hand Line
- Completed Mixed Construction Line
- Completed Road as Line
- 🔴 Uncontained
- 🔴 Wildfire Daily Fire Perimeter
- 🟢 USFS Wilderness Study Area Boundary
- 🛣️ Gravel Road
- 🛤️ Unimproved
- 🛤️ USFS Motorcycle Trail
- 🛤️ Motorized Trail
- 🛤️ Dirt (Not Paved)



Scale: 1:40,000  
Page 3 of 6

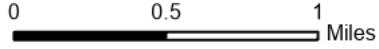
8/10/2022 1947  
North American 1983 Datum. Lat/Long Grid



**IAP**  
**Hog Trough**  
**MT-BRF-022161**

8/11/22

824 acres at 8/8/22 2217  
 Acres from IR

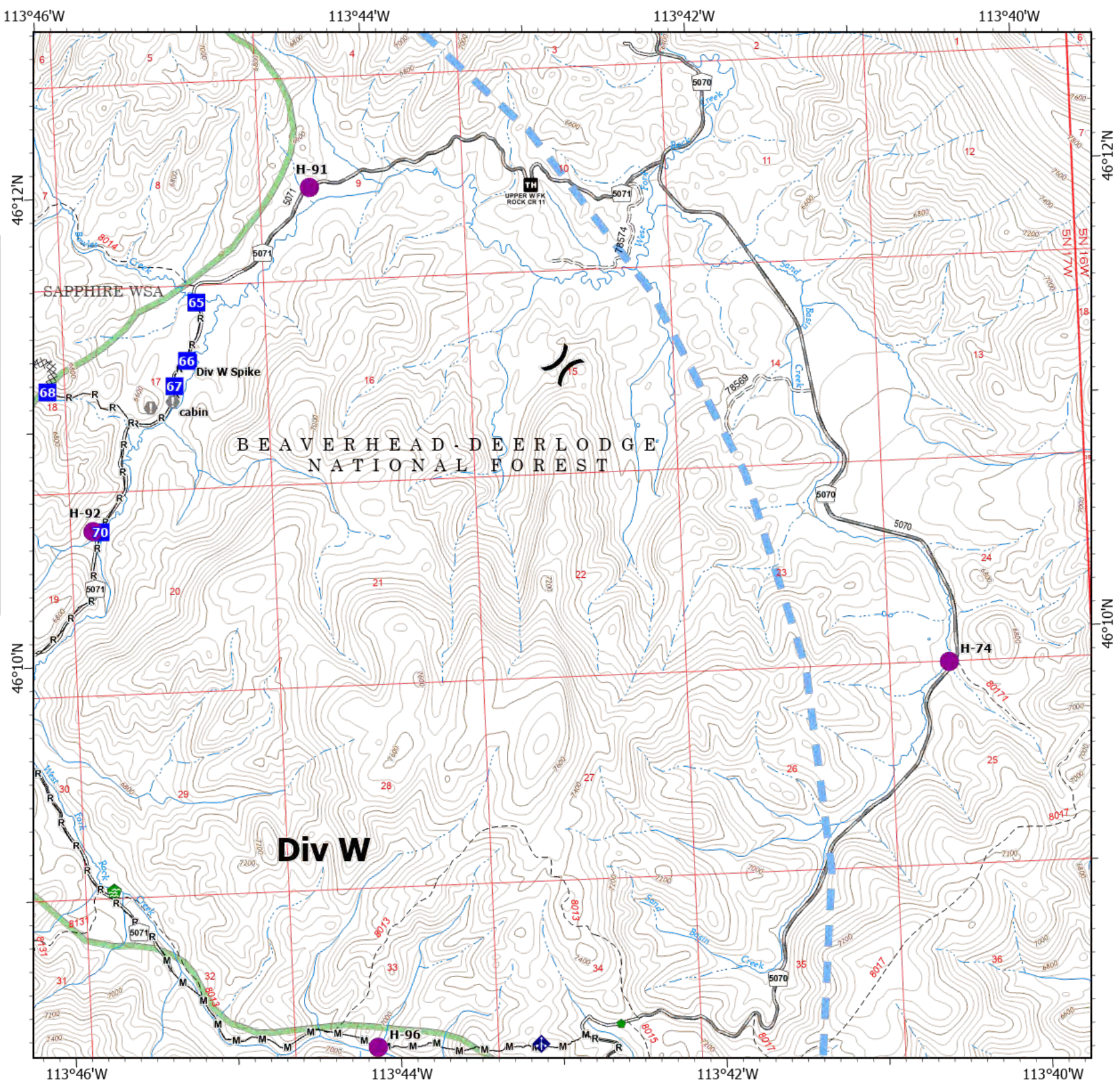


- Helispot
- Division Break
- Drop Point
- Camp
- Value at Risk
- Water Development or Draft Site
- Repair Point
- Mobile Weather Unit
- Completed Dozer Line
- Completed Mixed Construction Line
- Completed Road as Line
- Temporary Flight Restriction
- USFS Wilderness Study Area Boundary
- Gravel Road
- Unimproved Road
- Dirt (Not Paved)



Scale: 1:40,000  
 Page 4 of 6

8/10/2022 1947  
 North American 1983 Datum. Lat/Long Grid



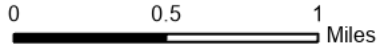
# IAP

## Hog Trough

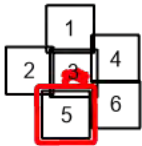
### MT-BRF-022161

8/11/22

824 acres at 8/8/22 2217  
Acres from IR

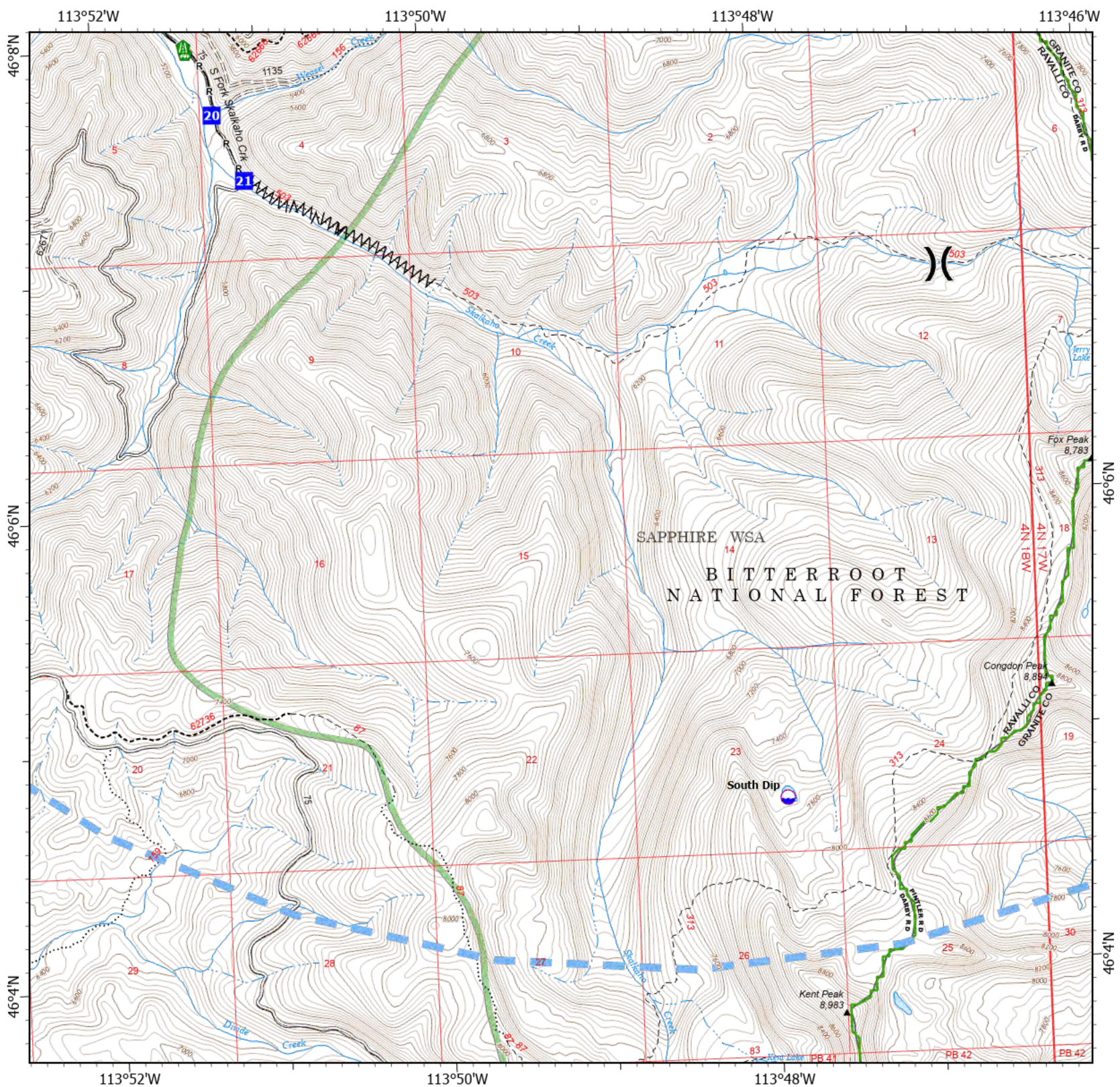


- Dip Site
- Division Break
- Drop Point
- Road Repair
- Landing or Log Deck
- Completed Fuel Break
- Completed Road as Line
- Temporary Flight Restriction
- USFS Wilderness Study Area Boundary
- Gravel Road
- Dirt Road
- Unimproved Road
- USFS Motorcycle Trail
- Motorized Trail
- Dirt (Not Paved)



Scale: 1:40,000  
Page 5 of 6

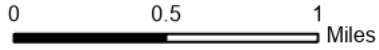
8/10/2022 1948  
North American 1983 Datum. Lat/Long Grid



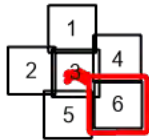
**IAP**  
**Hog Trough**  
**MT-BRF-022161**

8/11/22

824 acres at 8/8/22 2217  
 Acres from IR



- Dip Site
- Helispot
- Repair Point
- Mobile Weather Unit
- Completed Hand Line
- Completed Mixed Construction Line
- Completed Road as Line
- Temporary Flight Restriction
- USFS Wilderness Study Area Boundary
- Gravel Road
- Unimproved Road
- Dirt (Not Paved)



Scale: 1:40,000  
 Page 6 of 6

8/10/2022 1948  
 North American 1983 Datum. Lat/Long Grid

