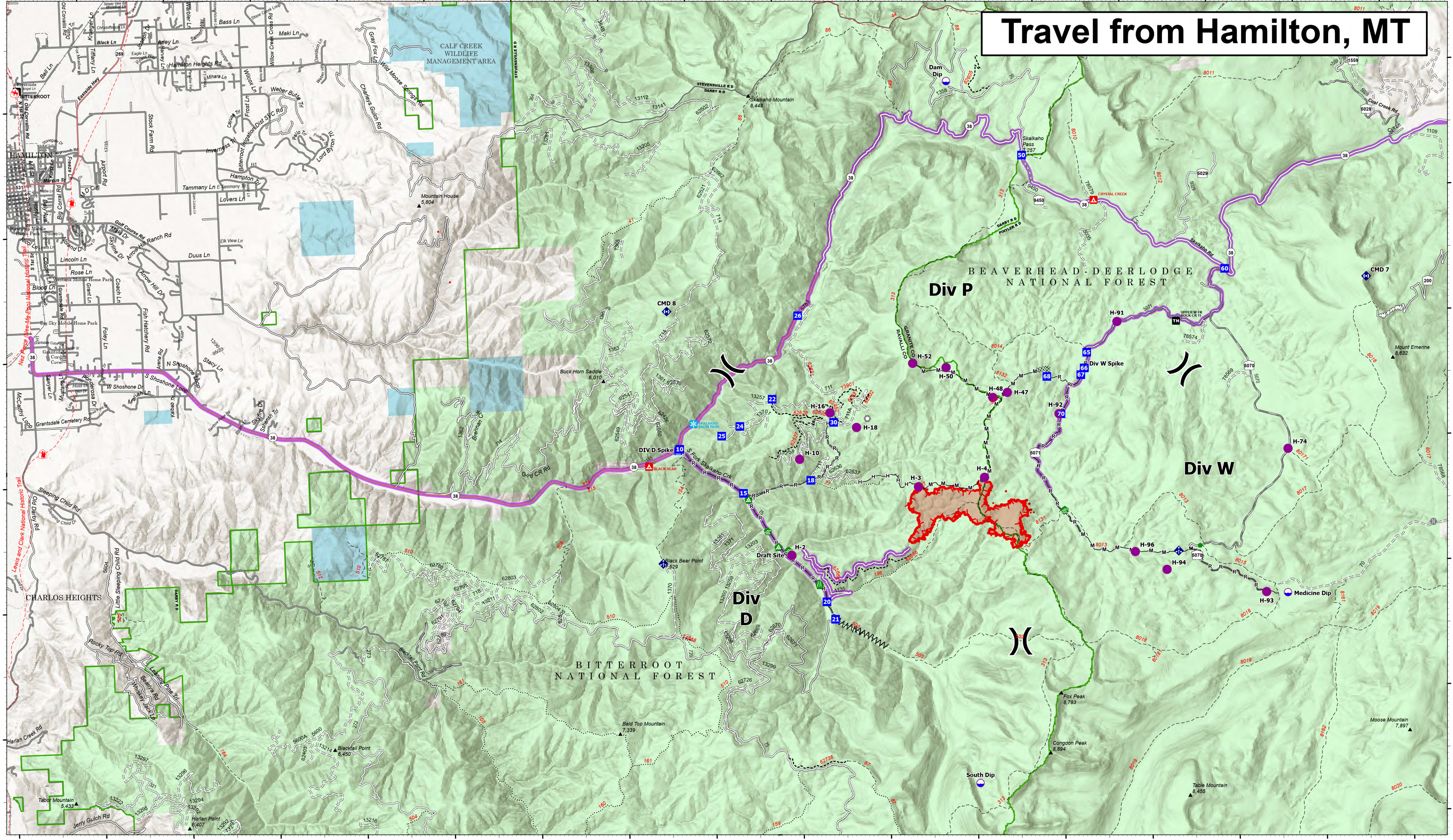
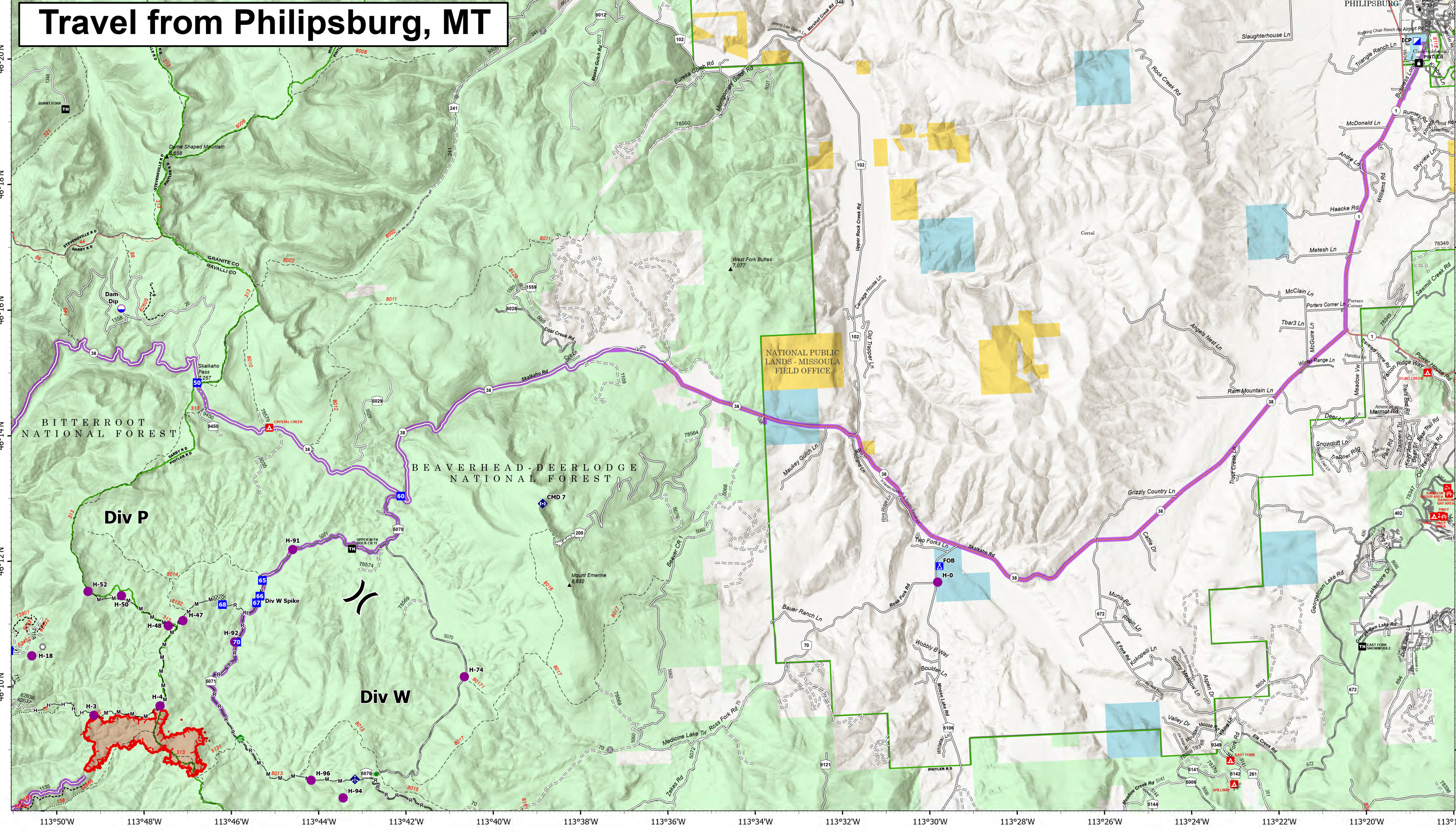


# Travel from Hamilton, MT



# Travel from Philipsburg, MT



## Transportation

Hog Trough  
 MT-BRF-022161  
 8/11/22  
 824 acres at 8/8/22 2217  
 Acres from IR



- Travel Routes
- Dip Site
- Helispot
- Division Break
- Drop Point
- Camp
- Other
- Landmark
- Bridge
- Water Development or Draft Site
- Road Repair
- Repair Point
- Landing or Log Deck
- Mobile Weather Unit
- Repeater
- Completed Dozer Line
- Completed Fuel Break
- Completed Hand Line
- Completed Mixed Construction Line
- Completed Road as Line
- Wildfire Daily Fire Perimeter
- State Secondary Route
- State Route Not Paved
- Gravel Road
- Dirt Road
- Unimproved Road
- USFS Motorcycle Trail
- Motorized Trail
- Paved Roads
- Dirt (Not Paved)
- Forest Service Land
- State Public Lands