

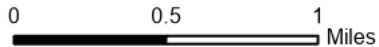
IAP

Hog Trough

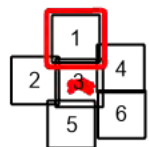
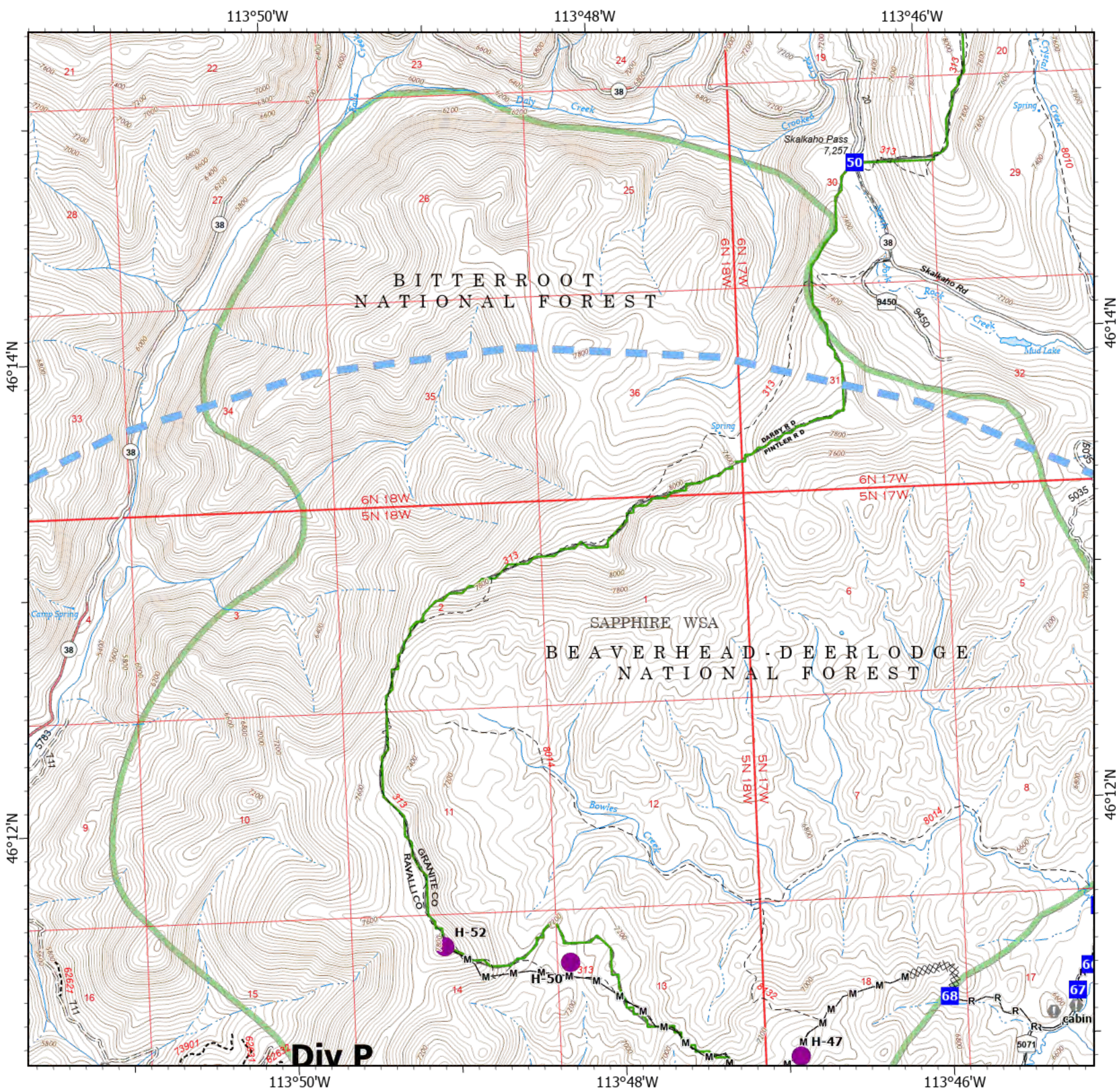
MT-BRF-022161

8/12/22

824 acres at 8/8/22 2217
Acres from IR



- Helispot
- Drop Point
- ▲ Camp
- Value at Risk
- XXXX Completed Dozer Line
- M— Completed Mixed Construction Line
- R— Completed Road as Line
- Temporary Flight Restriction
- USFS Wilderness Study Area Boundary
- Dirt Road
- == Unimproved Road
- Motorized Trail
- Dirt (Not Paved)



Scale: 1:40,000
Page 1 of 6

8/11/2022 2125
North American 1983 Datum. Lat/Long Grid

Div P

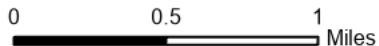
IAP

Hog Trough

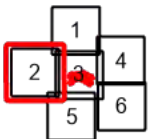
MT-BRF-022161

8/12/22

824 acres at 8/8/22 2217
Acres from IR

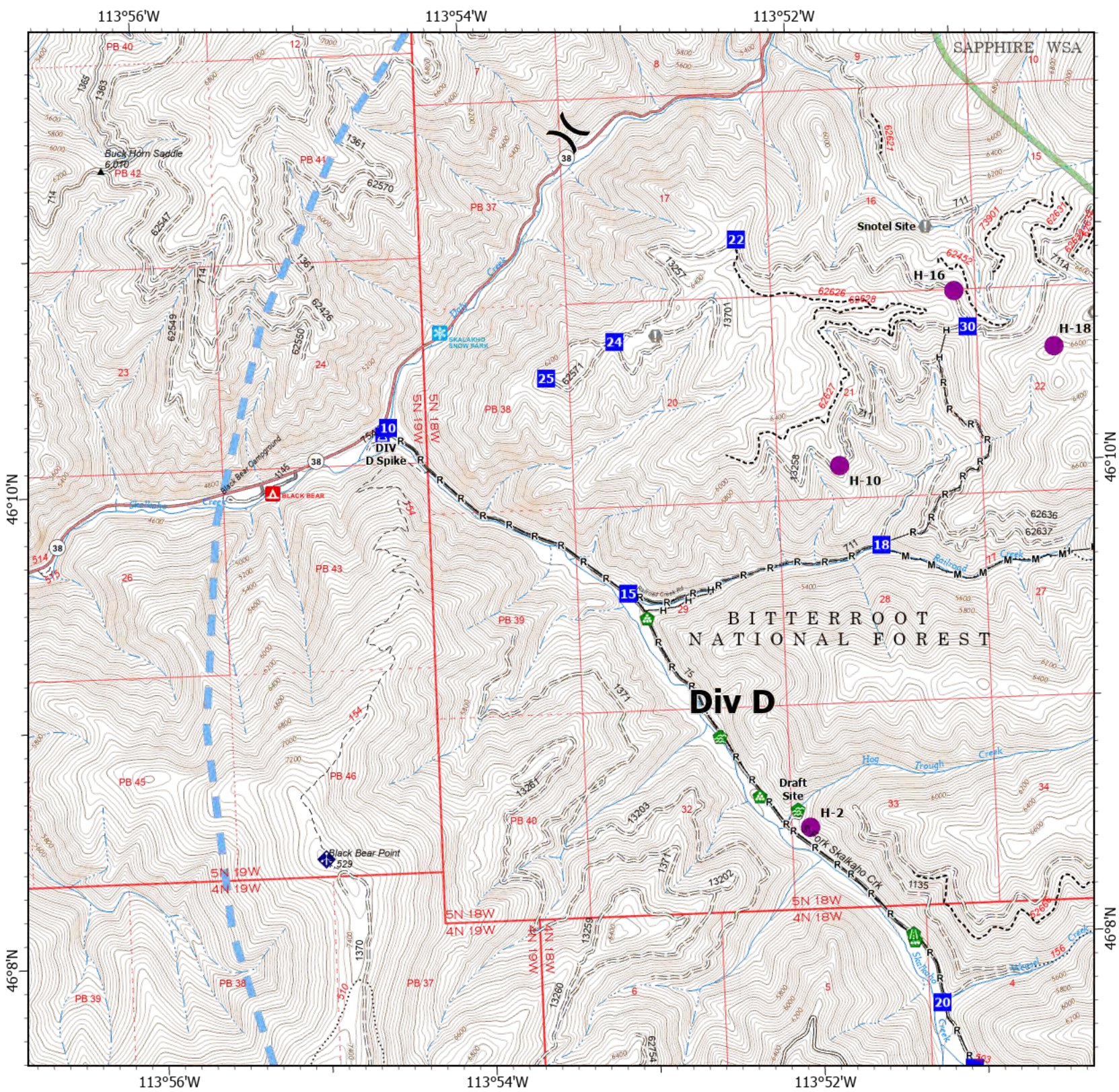


- Helispot
-) Division Break
- Drop Point
- ▲ Camp
- Value at Risk
- Landmark
- Water Development or Draft Site
- Road Repair
- Landing or Log Deck
- Mobile Weather Unit
- Completed Fuel Break
- Completed Hand Line
- Completed Mixed Construction Line
- Completed Road as Line
- Temporary Flight Restriction
- USFS Wilderness Study Area Boundary
- Gravel Road
- Dirt Road
- Unimproved Road
- USFS Motorcycle Trail
- Motorized Trail
- Paved Roads
- Dirt (Not Paved)



Scale: 1:40,000
Page 2 of 6

8/11/2022 2126
North American 1983 Datum. Lat/Long Grid



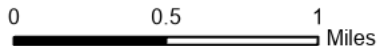
IAP

Hog Trough

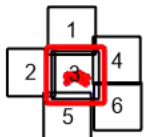
MT-BRF-022161

8/12/22

824 acres at 8/8/22 2217
Acres from IR

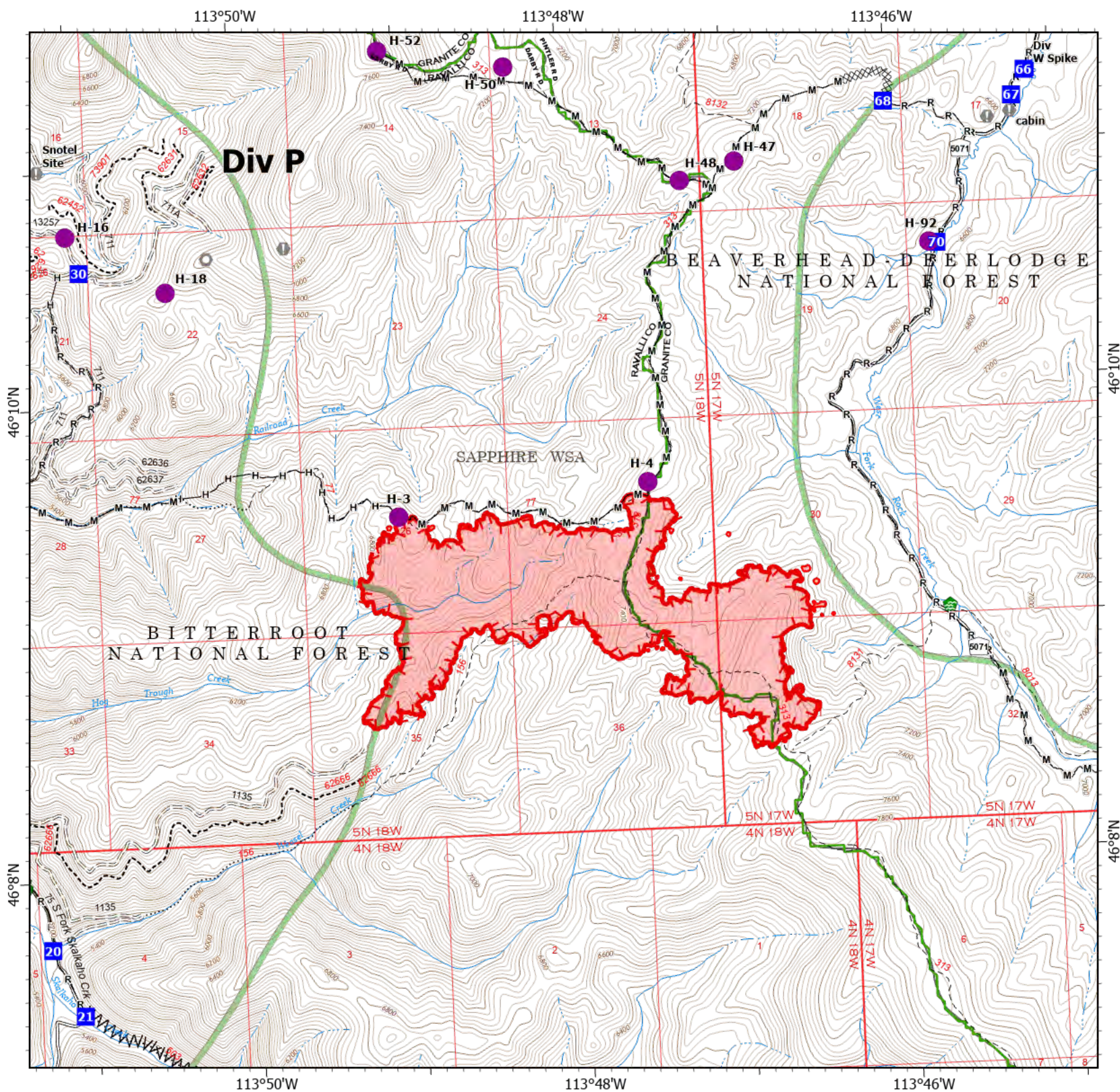


- Helispot
- Drop Point
- ▲ Camp
- Value at Risk
- Landmark
- 🏠 Water Development or Draft Site
- 🛠️ Road Repair
- 🏠 Landing or Log Deck
- XXXX Completed Dozer Line
- 〰️ Completed Fuel Break
- H— Completed Hand Line
- M— Completed Mixed Construction Line
- R— Completed Road as Line
- ▭ Uncontained
- ▭ Wildfire Daily Fire Perimeter
- ▭ USFS Wilderness Study Area Boundary
- Gravel Road
- == Unimproved Road
- ⋯ USFS Motorcycle Trail
- - - Motorized Trail
- Dirt (Not Paved)



Scale: 1:40,000
Page 3 of 6

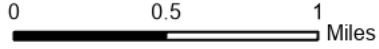
8/11/2022 2126
North American 1983 Datum. Lat/Long Grid



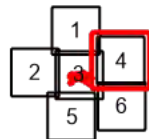
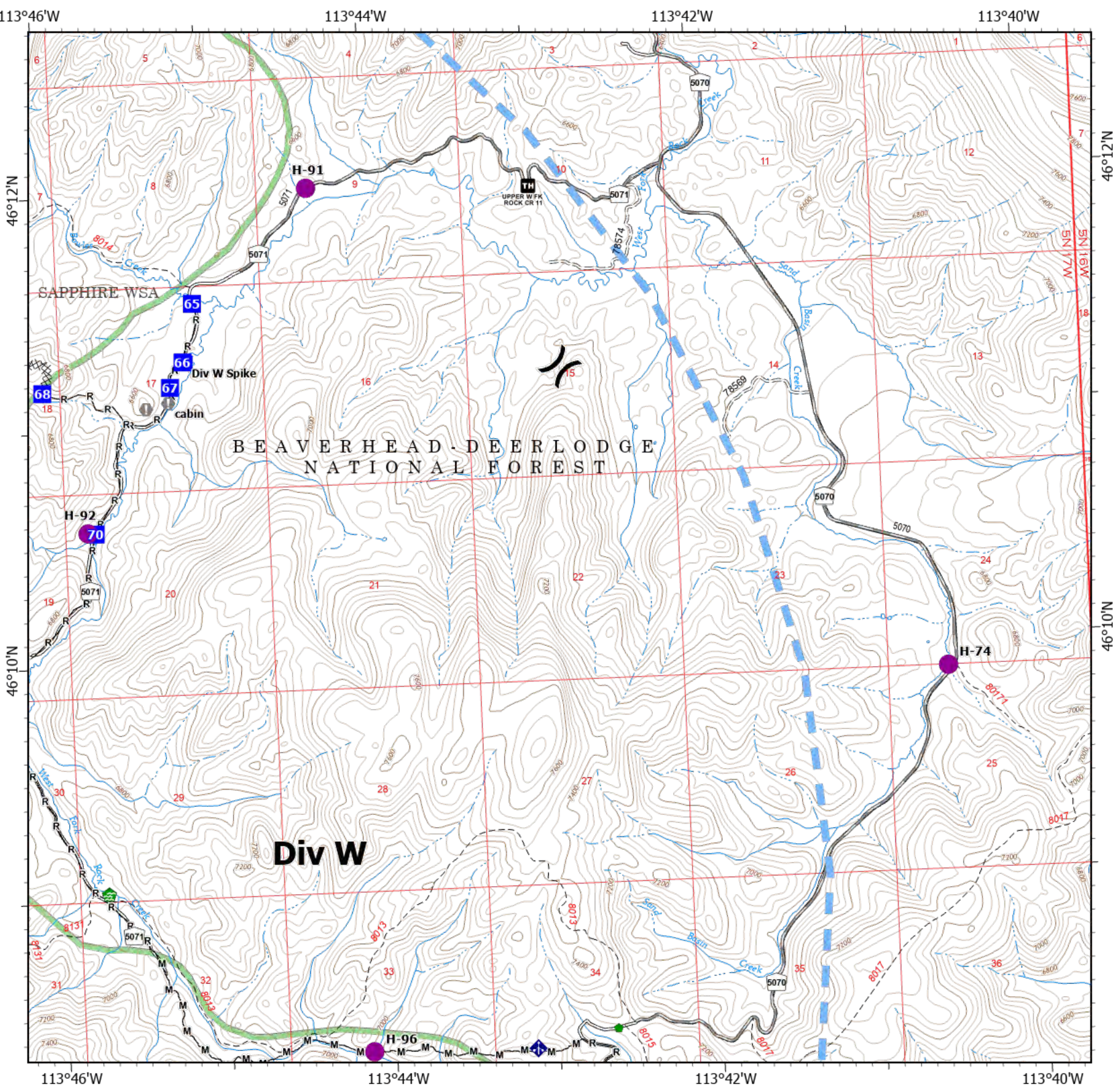
IAP
Hog Trough
MT-BRF-022161

8/12/22

824 acres at 8/8/22 2217
 Acres from IR



- Helispot
-)(Division Break
- Drop Point
- ▲ Camp
- Value at Risk
- Water Development or Draft Site
- Repair Point
- ◆ Mobile Weather Unit
- XXXXX Completed Dozer Line
- M— Completed Mixed Construction Line
- R— Completed Road as Line
- ▬ Temporary Flight Restriction
- ▬ USFS Wilderness Study Area Boundary
- ▬ Gravel Road
- = Unimproved Road
- ▬ Dirt (Not Paved)



Scale: 1:40,000
 Page 4 of 6

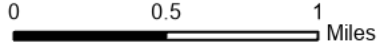
IAP

Hog Trough

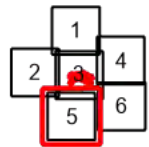
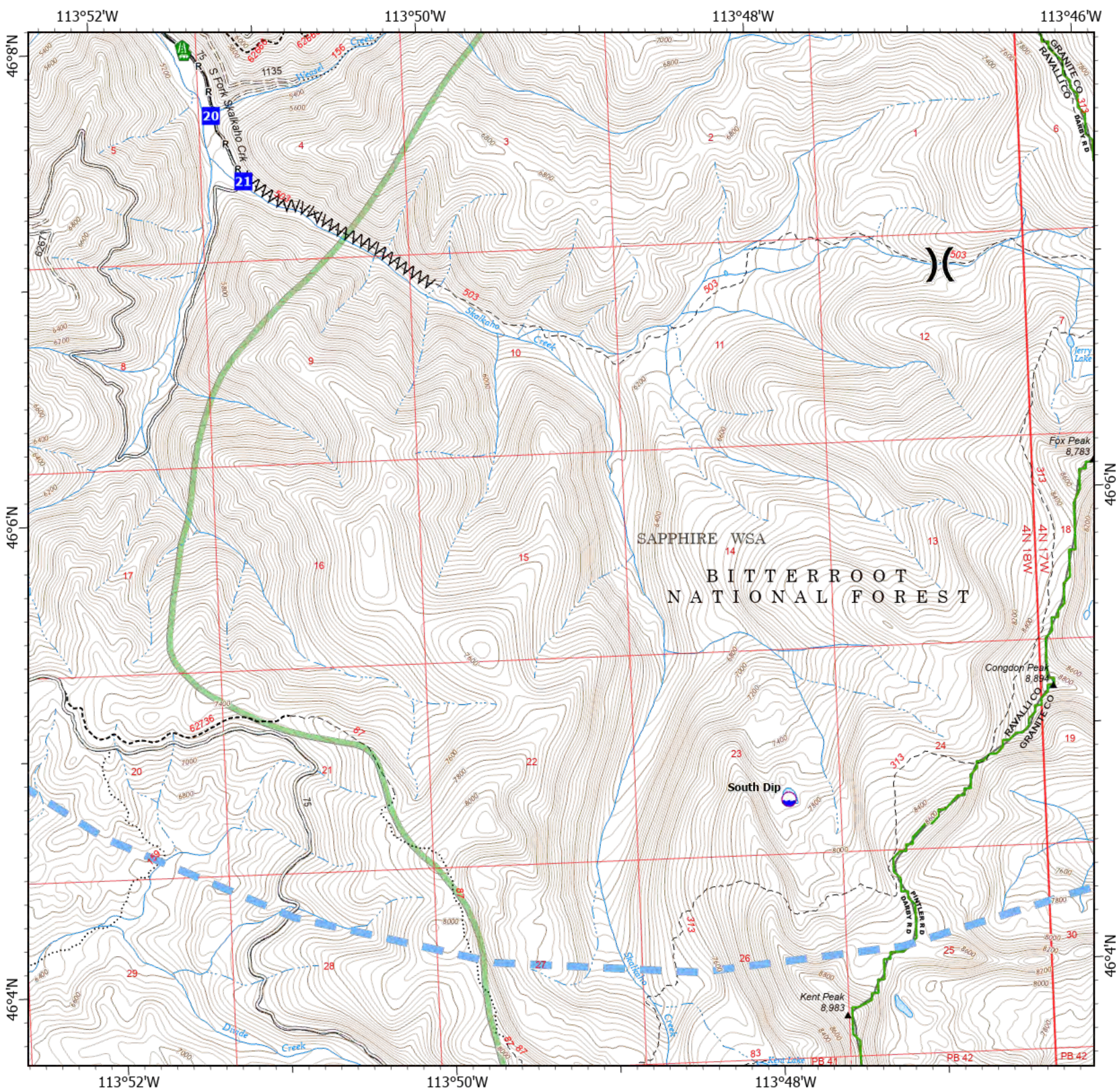
MT-BRF-022161

8/12/22

824 acres at 8/8/22 2217
Acres from IR



- Dip Site
- Division Break
- Drop Point
- Road Repair
- Landing or Log Deck
- Completed Fuel Break
- Completed Road as Line
- Temporary Flight Restriction
- USFS Wilderness Study Area Boundary
- Gravel Road
- Dirt Road
- Unimproved Road
- USFS Motorcycle Trail
- Motorized Trail
- Dirt (Not Paved)



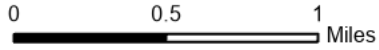
Scale: 1:40,000
Page 5 of 6

8/11/2022 2126
North American 1983 Datum. Lat/Long Grid

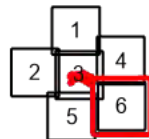
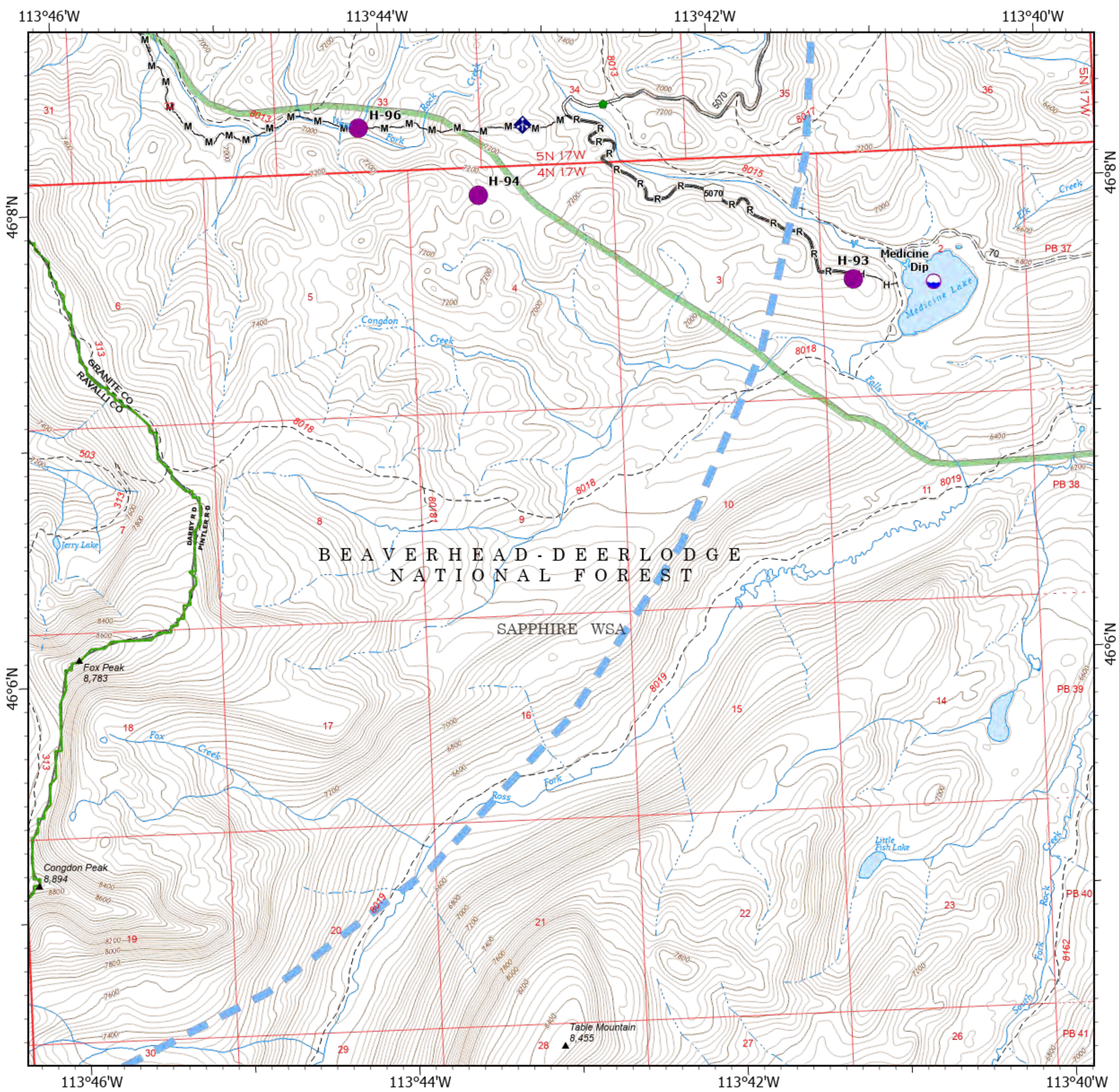
IAP
Hog Trough
MT-BRF-022161

8/12/22

824 acres at 8/8/22 2217
 Acres from IR



- Dip Site
- Helispot
- Repair Point
- Mobile Weather Unit
- Completed Hand Line
- Completed Mixed Construction Line
- Completed Road as Line
- Temporary Flight Restriction
- USFS Wilderness Study Area Boundary
- Gravel Road
- Unimproved Road
- Dirt (Not Paved)



Scale: 1:40,000
 Page 6 of 6