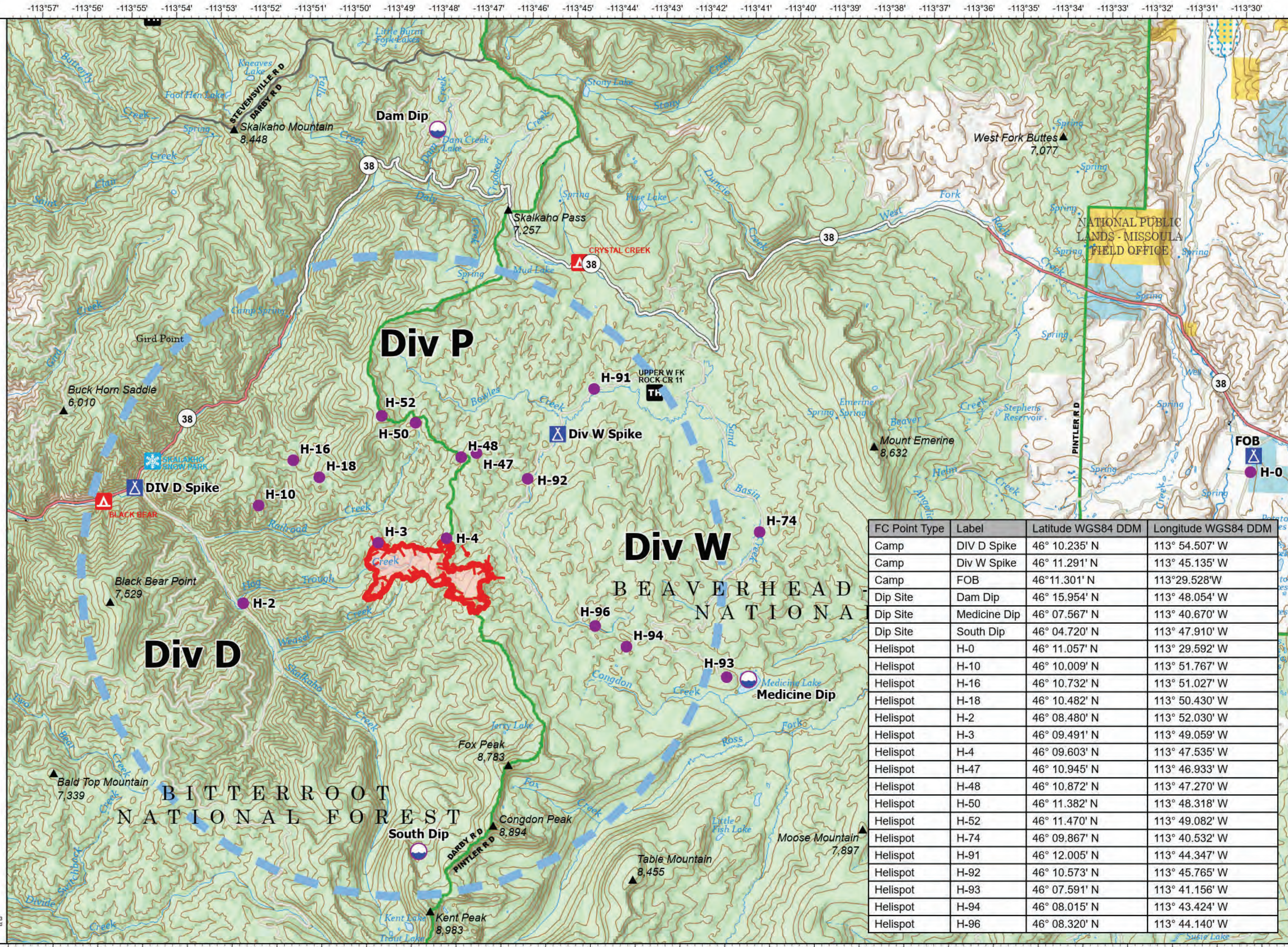


# Pilot Map

Hog Trough  
MT-BRF-022161  
824 acres

Fire perimeter updated from  
IR on 8/06/22 2255  
8/12/22

-  Dip Site
-  Helispot
-  Camp
-  Temporary Flight Restriction
-  Uncontained
-  Wildfire Daily Fire Perimeter



FC Point Type	Label	Latitude WGS84 DDM	Longitude WGS84 DDM
Camp	DIV D Spike	46° 10.235' N	113° 54.507' W
Camp	Div W Spike	46° 11.291' N	113° 45.135' W
Camp	FOB	46° 11.301' N	113° 29.528' W
Dip Site	Dam Dip	46° 15.954' N	113° 48.054' W
Dip Site	Medicine Dip	46° 07.567' N	113° 40.670' W
Dip Site	South Dip	46° 04.720' N	113° 47.910' W
Helispot	H-0	46° 11.057' N	113° 29.592' W
Helispot	H-10	46° 10.009' N	113° 51.767' W
Helispot	H-16	46° 10.732' N	113° 51.027' W
Helispot	H-18	46° 10.482' N	113° 50.430' W
Helispot	H-2	46° 08.480' N	113° 52.030' W
Helispot	H-3	46° 09.491' N	113° 49.059' W
Helispot	H-4	46° 09.603' N	113° 47.535' W
Helispot	H-47	46° 10.945' N	113° 46.933' W
Helispot	H-48	46° 10.872' N	113° 47.270' W
Helispot	H-50	46° 11.382' N	113° 48.318' W
Helispot	H-52	46° 11.470' N	113° 49.082' W
Helispot	H-74	46° 09.867' N	113° 40.532' W
Helispot	H-91	46° 12.005' N	113° 44.347' W
Helispot	H-92	46° 10.573' N	113° 45.765' W
Helispot	H-93	46° 07.591' N	113° 41.156' W
Helispot	H-94	46° 08.015' N	113° 43.424' W
Helispot	H-96	46° 08.320' N	113° 44.140' W

0 1 2  
Miles  
Scale: 1:500,000

8/11/2022 1911  
North American 1983  
Datum: Lat/Long Grid

-113°57' -113°56' -113°55' -113°54' -113°53' -113°52' -113°51' -113°50' -113°49' -113°48' -113°47' -113°46' -113°45' -113°44' -113°43' -113°42' -113°41' -113°40' -113°39' -113°38' -113°37' -113°36' -113°35' -113°34' -113°33' -113°32' -113°31' -113°30'