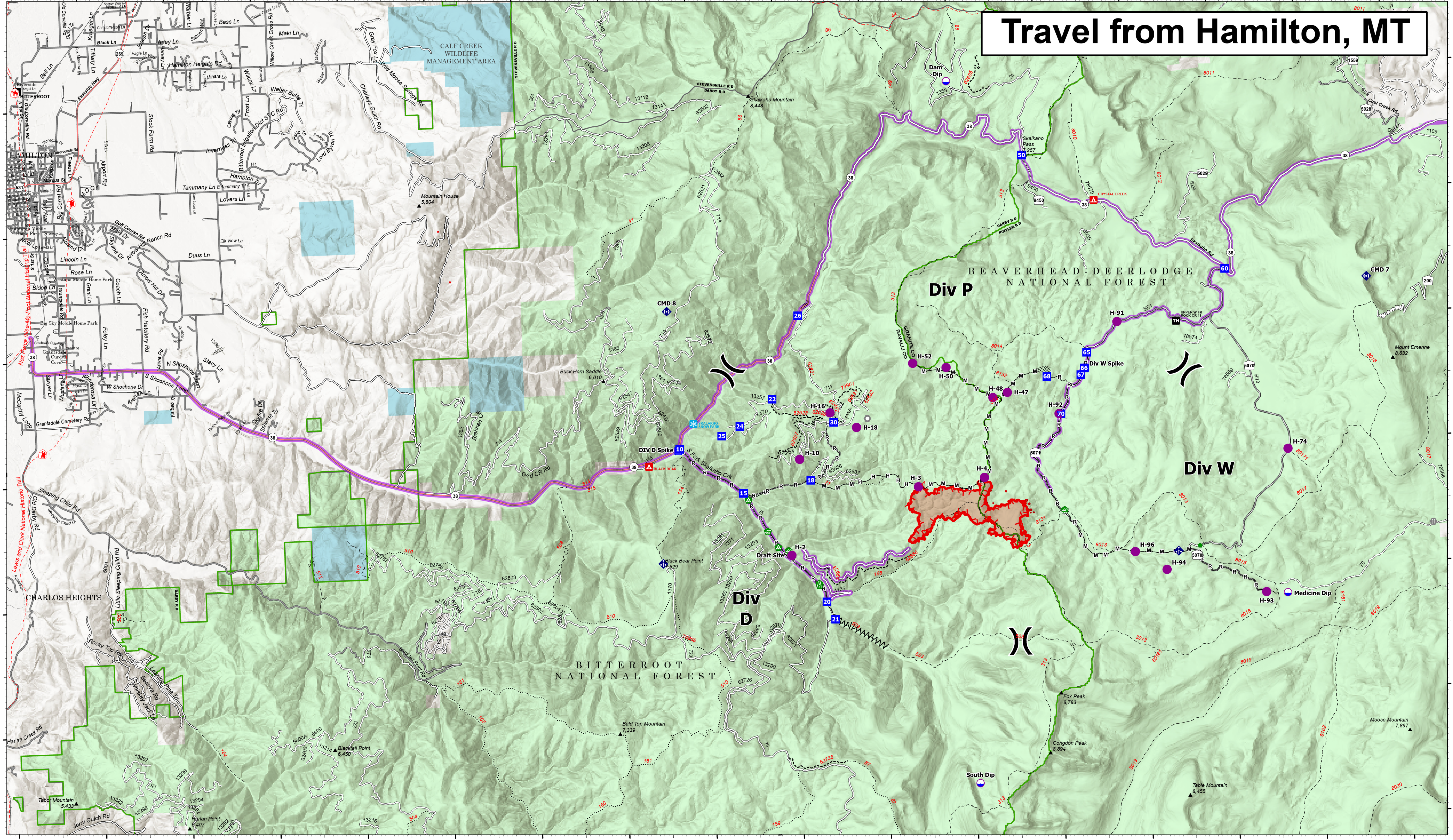
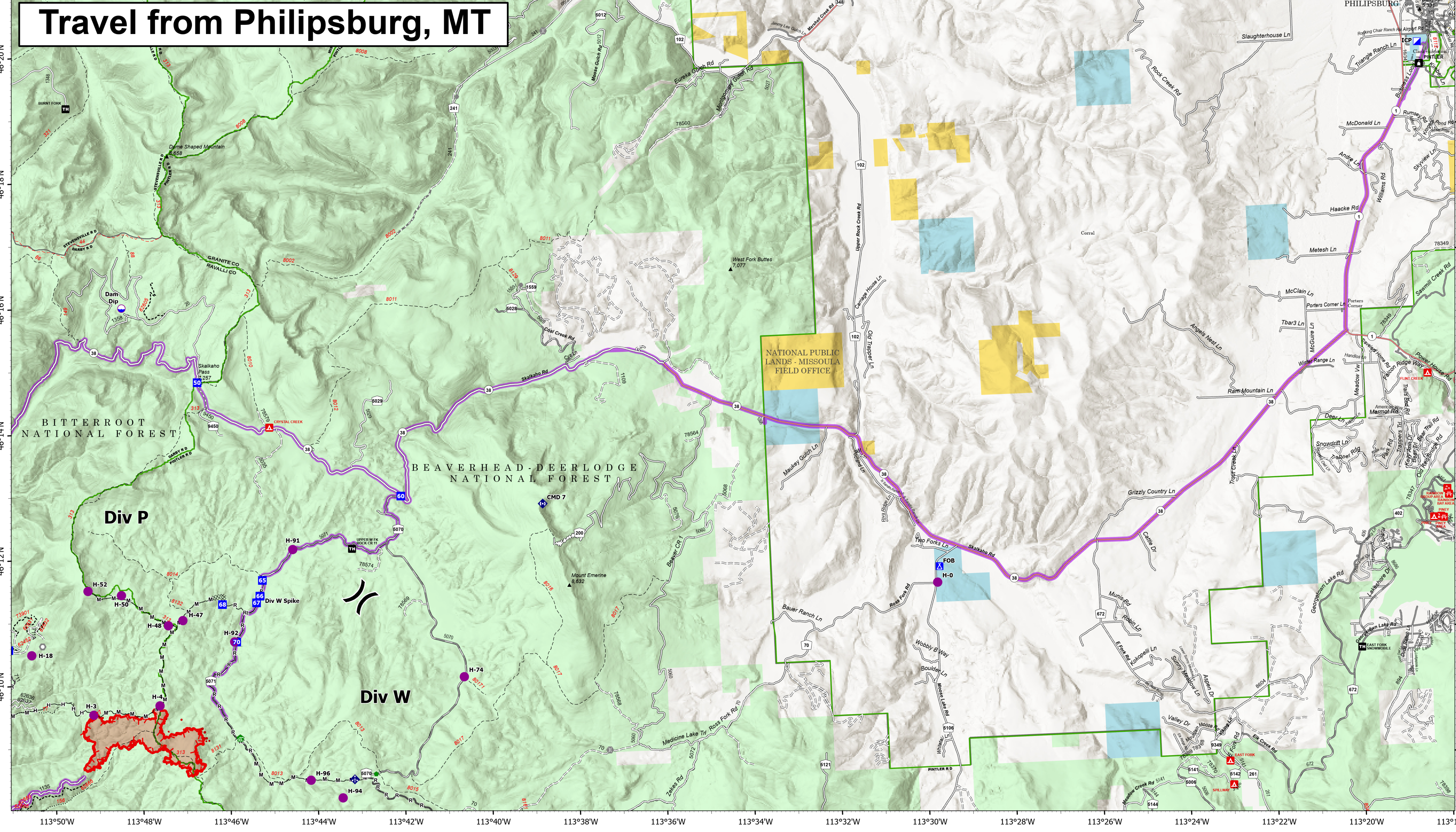


# Travel from Hamilton, MT



# Travel from Philipsburg, MT



## Transportation

Hog Trough  
 MT-BRF-022161  
 8/11/22  
 824 acres at 8/8/22 2217  
 Acres from IR



- |                |                                 |                                   |                       |
|----------------|---------------------------------|-----------------------------------|-----------------------|
| Travel Routes  | Bridge                          | Completed Fuel Break              | Dirt Road             |
| Dip Site       | Water Development or Draft Site | Completed Hand Line               | Unimproved Road       |
| Helispot       | Road Repair                     | Completed Mixed Construction Line | USFS Motorcycle Trail |
| Division Break | Repair Point                    | Completed Road as Line            | Motorized Trail       |
| Drop Point     | Landing or Log Deck             | Wildfire Daily Fire Perimeter     | Paved Roads           |
| Camp           | Mobile Weather Unit             | State Secondary Route             | Dirt (Not Paved)      |
| Other          | Repeater                        | State Route Not Paved             | Forest Service Land   |
| Landmark       | Completed Dozer Line            | Gravel Road                       | State Public Lands    |