

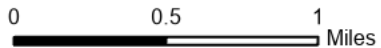
# IAP

## Hog Trough

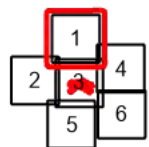
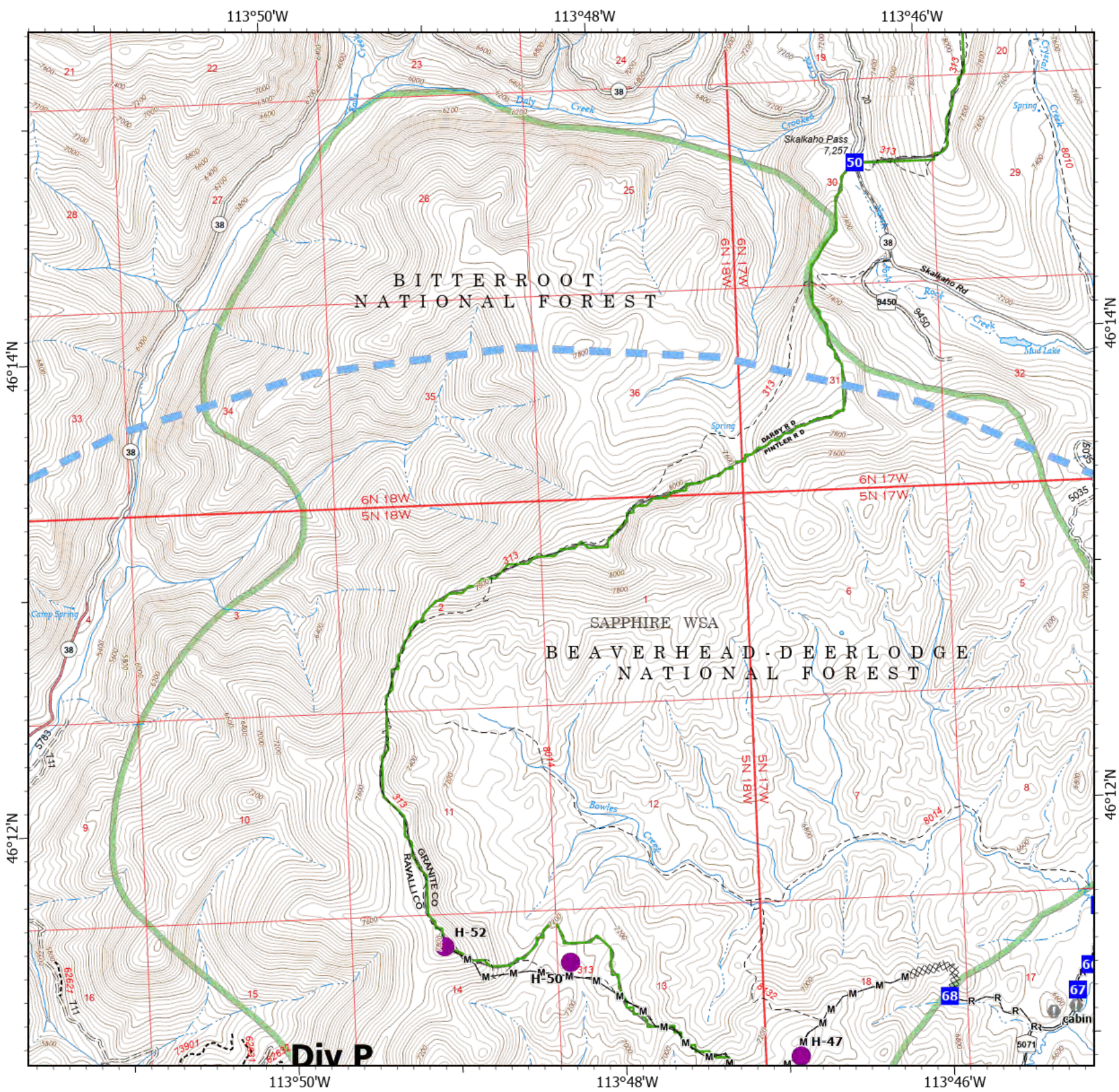
### MT-BRF-022161

8/13/22

832 acres at 8/12/22 1424



- Helispot
- Drop Point
- ▲ Camp
- Value at Risk
- XXXX Completed Dozer Line
- M— Completed Mixed Construction Line
- R— Completed Road as Line
- Temporary Flight Restriction
- USFS Wilderness Study Area Boundary
- Dirt Road
- Unimproved Road
- Motorized Trail
- Dirt (Not Paved)



Scale: 1:40,000  
Page 1 of 6

8/12/2022 1932  
North American 1983 Datum, Lat/Long Grid

Div P

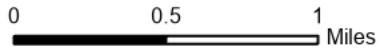


# IAP

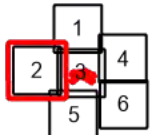
Hog Trough  
MT-BRF-022161

8/13/22

832 acres at 8/12/22 1424

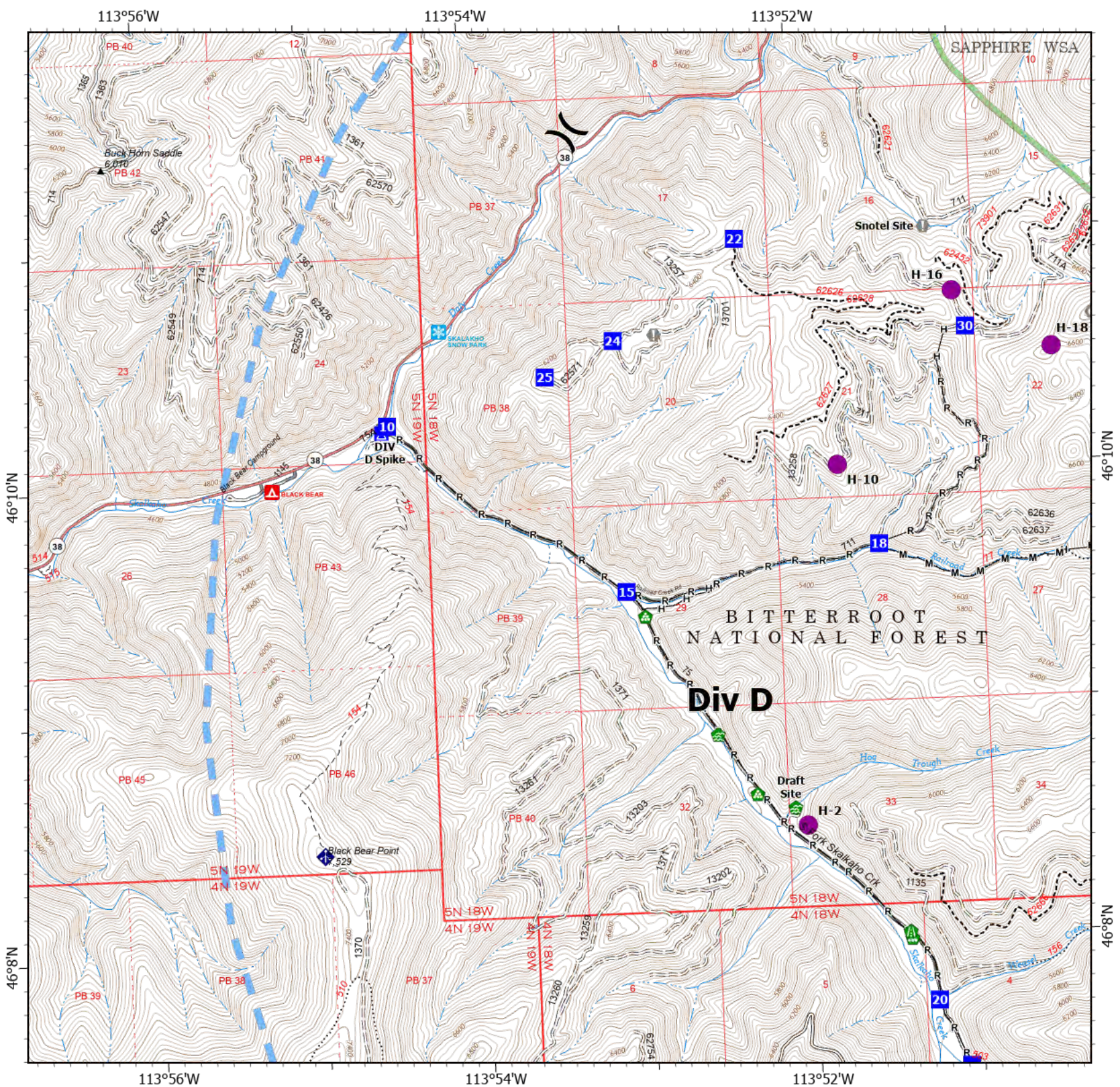


- Helispot
- ) ( Division Break
- Drop Point
- ▲ Camp
- ⊕ Value at Risk
- Landmark
- 🏠 Water Development or Draft Site
- 🛠 Road Repair
- 🌲 Landing or Log Deck
- 🌬 Mobile Weather Unit
- ⚡ Completed Fuel Break
- H— Completed Hand Line
- M— Completed Mixed Construction Line
- R— Completed Road as Line
- 🚫 Temporary Flight Restriction
- 🌿 USFS Wilderness Study Area Boundary
- 🛞 Gravel Road
- 🛞 Dirt Road
- == Unimproved Road
- ⋯ USFS Motorcycle Trail
- - - Motorized Trail
- 🛞 Paved Roads
- 🛞 Dirt (Not Paved)



Scale: 1:40,000  
Page 2 of 6

8/12/2022 1932  
North American 1983 Datum. Lat/Long Grid

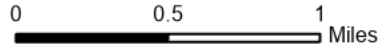




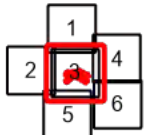
**IAP**  
**Hog Trough**  
**MT-BRF-022161**

8/13/22

832 acres at 8/12/22 1424

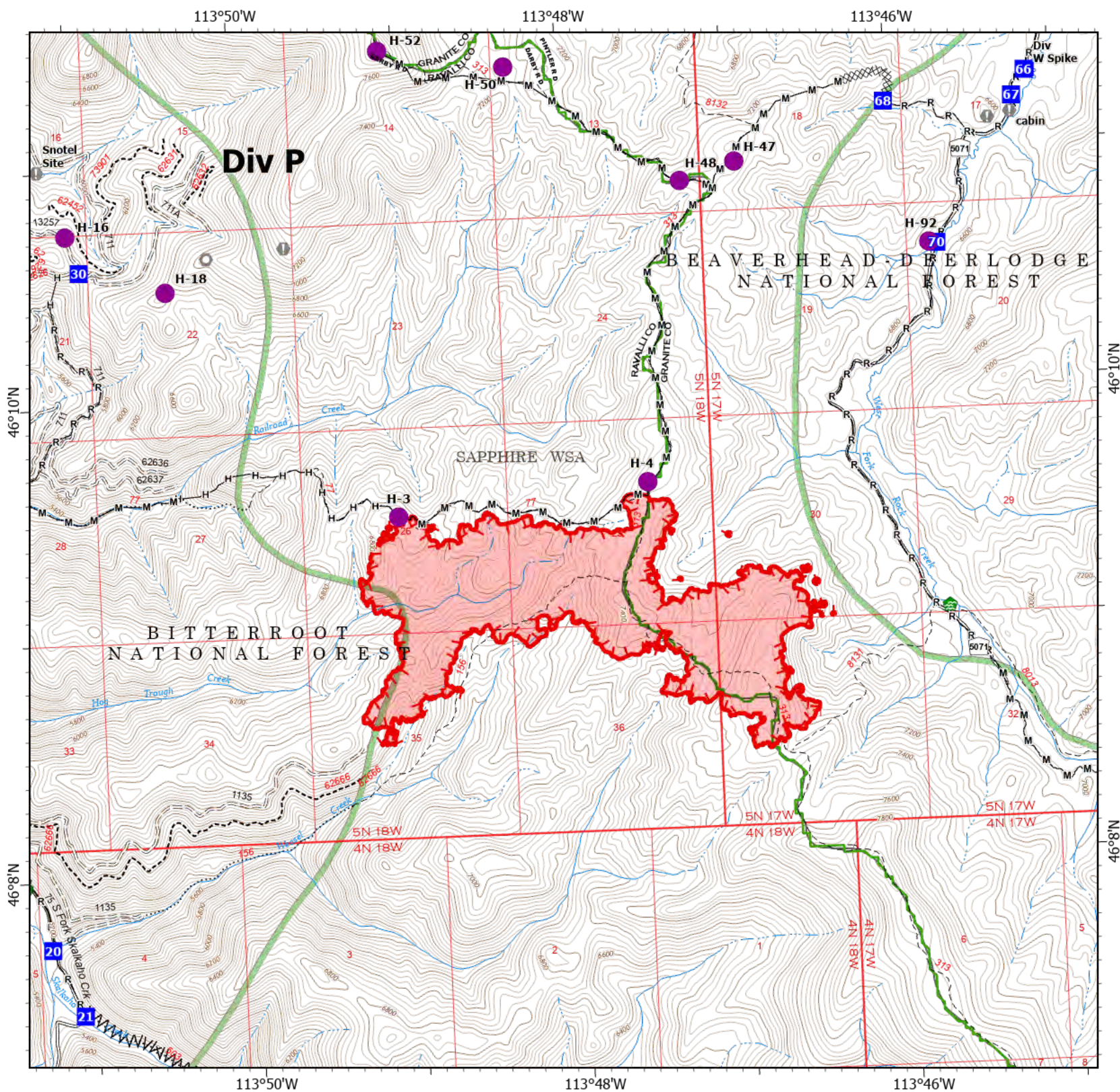


- Helispot
- Drop Point
- ▲ Camp
- Value at Risk
- Landmark
- 🏠 Water Development or Draft Site
- 🛠️ Road Repair
- 🏠 Landing or Log Deck
- ⊗ Completed Dozer Line
- ⊘ Completed Fuel Break
- Completed Hand Line
- Completed Mixed Construction Line
- Completed Road as Line
- ⬜ Uncontained
- 🔴 Wildfire Daily Fire Perimeter
- 🟢 USFS Wilderness Study Area Boundary
- Gravel Road
- == Unimproved Road
- ⋯ USFS Motorcycle Trail
- - - Motorized Trail
- Dirt (Not Paved)



Scale: 1:40,000  
 Page 3 of 6

8/12/2022 1932  
 North American 1983 Datum, Lat/Long Grid





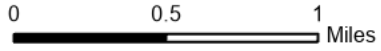
# IAP

## Hog Trough

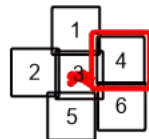
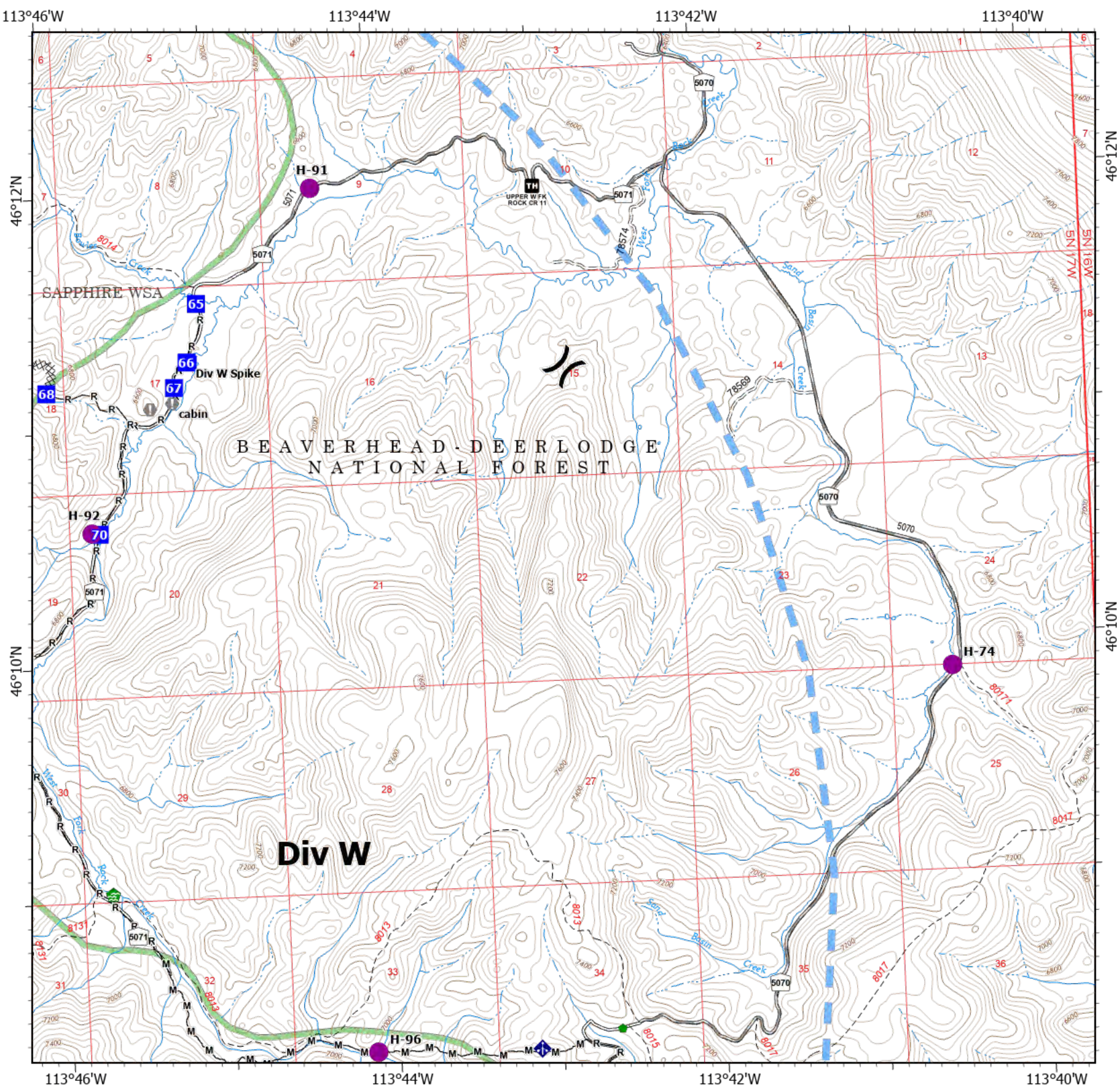
### MT-BRF-022161

8/13/22

832 acres at 8/12/22 1424



- Helispot
- ) ( Division Break
- Drop Point
- ▲ Camp
- ⊙ Value at Risk
- 🏠 Water Development or Draft Site
- Repair Point
- 📡 Mobile Weather Unit
- XXXX Completed Dozer Line
- M— Completed Mixed Construction Line
- R— Completed Road as Line
- ▬ Temporary Flight Restriction
- ▬ USFS Wilderness Study Area Boundary
- ▬ Gravel Road
- == Unimproved Road
- ▬ Dirt (Not Paved)



Scale: 1:40,000  
Page 4 of 6

8/12/2022 1932  
North American 1983 Datum. Lat/Long Grid







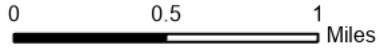
# IAP

## Hog Trough

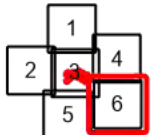
### MT-BRF-022161

8/13/22

832 acres at 8/12/22 1424



- Dip Site
- Helispot
- Repair Point
- Mobile Weather Unit
- Completed Hand Line
- Completed Mixed Construction Line
- Completed Road as Line
- Temporary Flight Restriction
- USFS Wilderness Study Area Boundary
- Gravel Road
- Unimproved Road
- Dirt (Not Paved)



Scale: 1:40,000  
Page 6 of 6

8/12/2022 1932  
North American 1983 Datum. Lat/Long Grid

