

Briefing

Fuse Lake
MT-BDF-006232
17 acres
8/17/2022

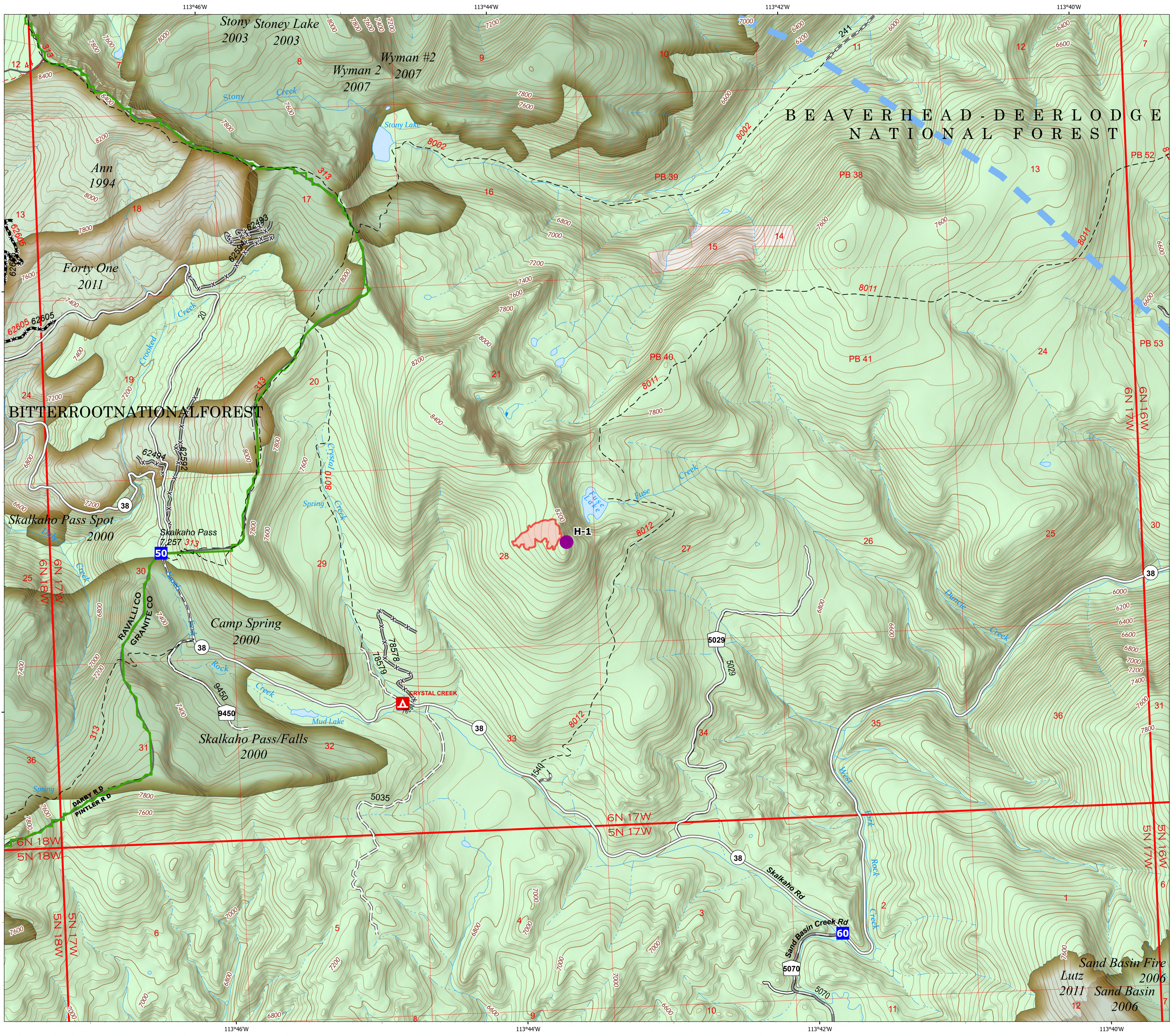
Acres from IR on 8/17/22 0031

- Helispot
- Drop Point
- ▬ Temporary Flight Restriction
- ▭ Wildfire Daily Fire Perimeter
- ▬ State Route Not Paved
- ▬ Gravel Road
- ▬ Dirt Road
- ▬ Unimproved Road
- ▬ Motorized Trail
- ⊗ Forest Service Roads Closed
- ▬ Dirt (Not Paved)
- Forest Service Land
- Fire History



0 0.13 0.25 0.5
Miles

8/17/2022 0553
North American 1983 Datum, Lat/Long Grid



Sand Basin Fire
Lutz 2006
2011 Sand Basin
2006