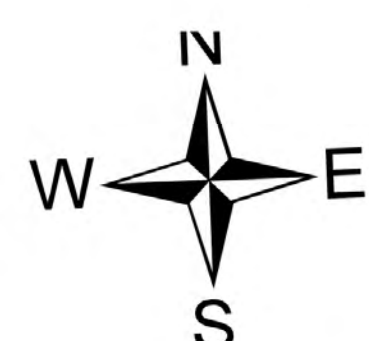


Briefing

Hog Trough
MT-BRF-022161
1,620 acres
8/19/2022

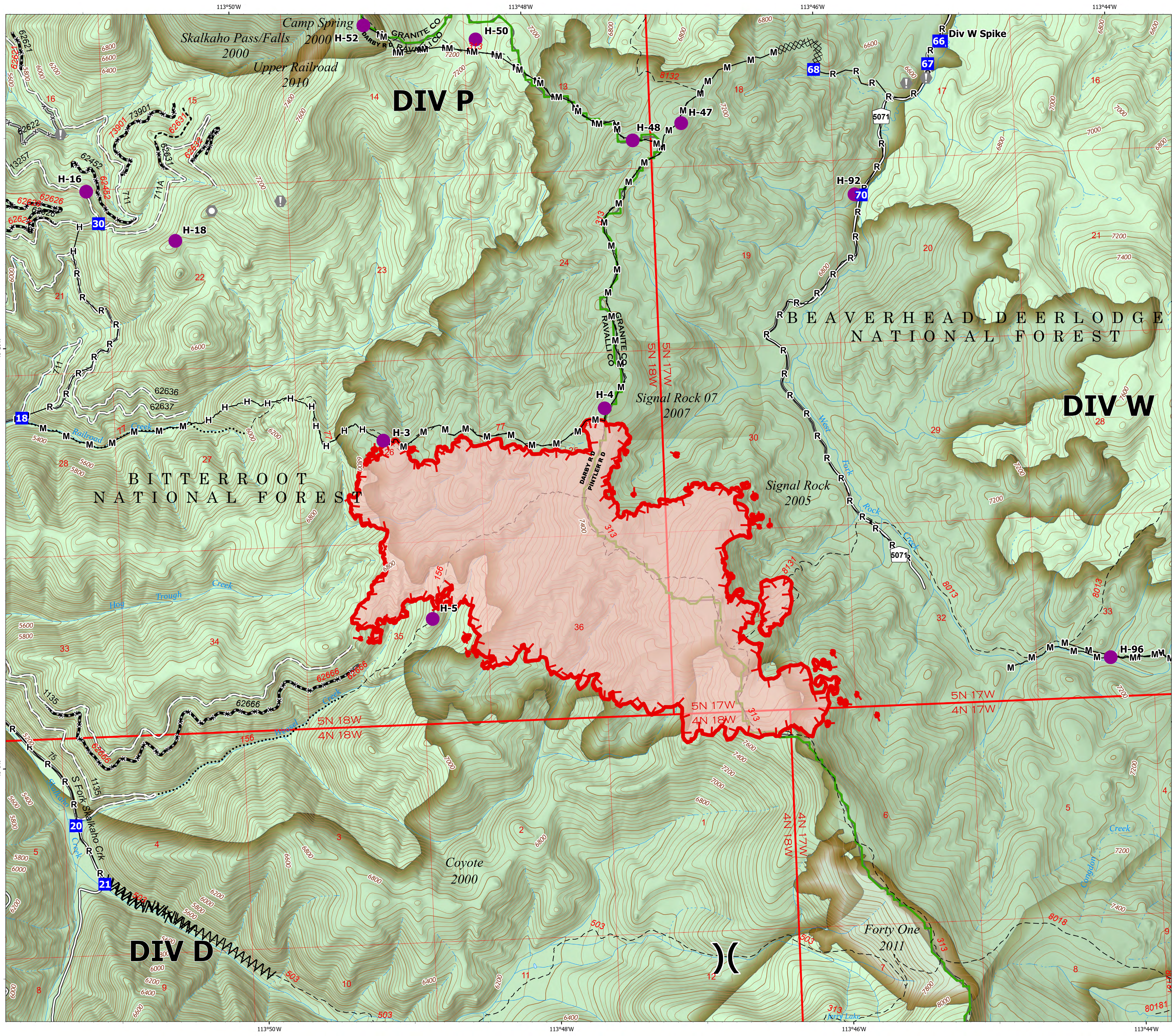
Acres from IR on 8/18/22 2209

- Helispot
-) Division Break
- Drop Point
- ⊠ Camp
- Ⓜ Value at Risk
- Ⓞ Landmark
- ⊗ Completed Dozer Line
- Ⓜ Completed Fuel Break
- H Completed Hand Line
- M Completed Mixed Construction Line
- R Completed Road as Line
- ▭ Uncontained
- ▭ Wildfire Daily Fire Perimeter
- ▭ Gravel Road
- ▭ Unimproved Road
- ⋯ USFS Motorcycle Trail
- - - Motorized Trail
- ⊗ Forest Service Roads Closed
- ▭ Dirt (Not Paved)
- ▭ Forest Service Land
- ▭ Fire History



0 0.13 0.25 0.5
Miles

8/19/2022 0547
North American 1983 Datum, Lat/Long Grid



113°50'W

113°48'W

113°46'W

113°44'W

46°10'N

46°8'N

46°10'N

46°8'N