



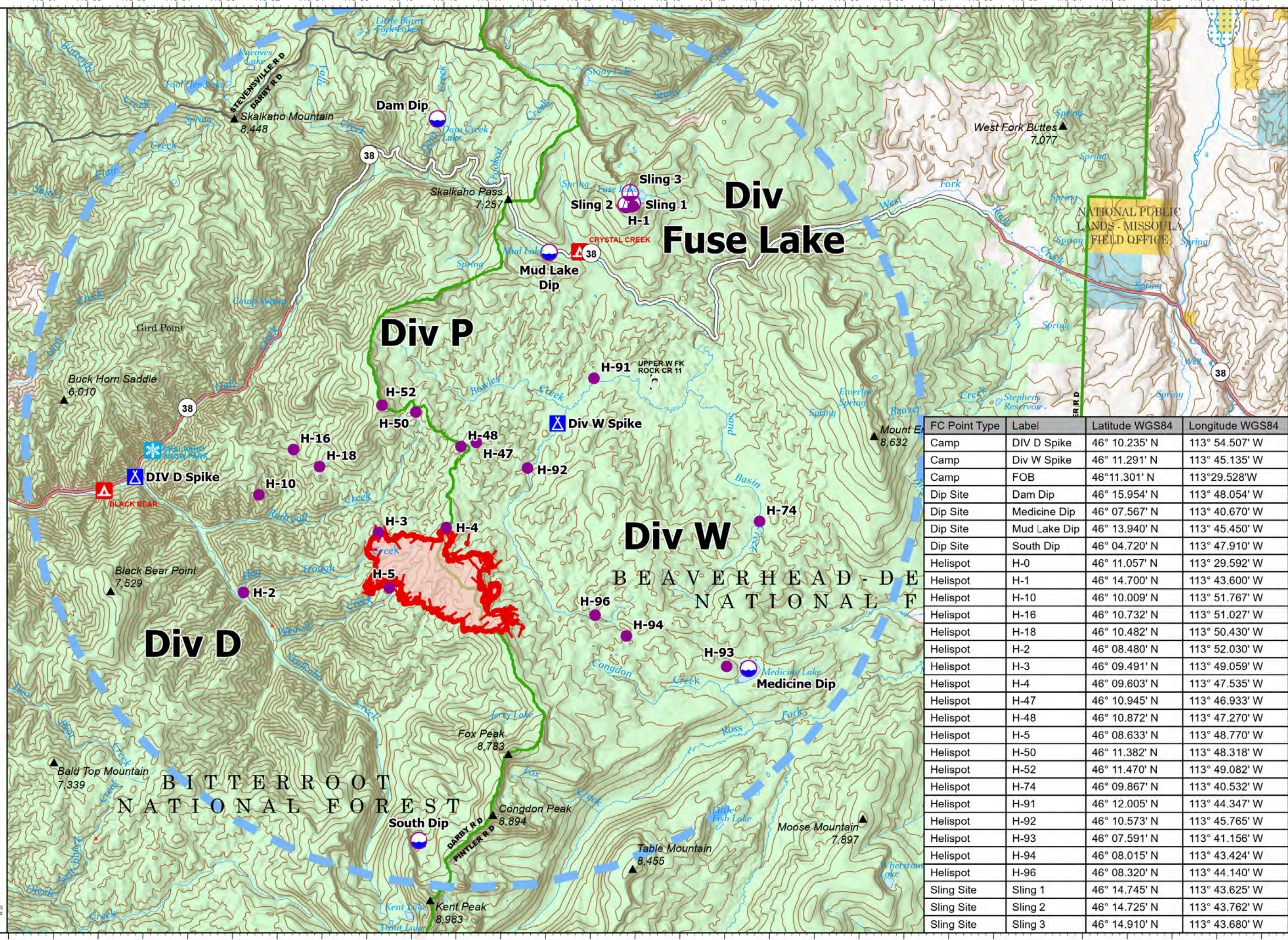
Pilot Map

Hog Trough
MT-BRF-022161

1,620 acres

8/19/22

-  Dip Site
-  Helispot
-  Sling Site
-  Camp
-  Temporary Flight Restriction
-  Uncontained
-  Wildfire Daily Fire Perimeter



| FC Point Type | Label | Latitude WGS84 | Longitude WGS84 |
|---------------|--------------|----------------|-----------------|
| Camp | DIV D Spike | 46° 10.235' N | 113° 54.507' W |
| Camp | Div W Spike | 46° 11.291' N | 113° 45.135' W |
| Camp | FOB | 46° 11.301' N | 113° 29.528' W |
| Dip Site | Dam Dip | 46° 15.954' N | 113° 48.054' W |
| Dip Site | Medicine Dip | 46° 07.567' N | 113° 40.670' W |
| Dip Site | Mud Lake Dip | 46° 13.940' N | 113° 45.450' W |
| Dip Site | South Dip | 46° 04.720' N | 113° 47.910' W |
| Helispot | H-0 | 46° 11.057' N | 113° 29.592' W |
| Helispot | H-1 | 46° 14.700' N | 113° 43.600' W |
| Helispot | H-10 | 46° 10.009' N | 113° 51.767' W |
| Helispot | H-16 | 46° 10.732' N | 113° 51.027' W |
| Helispot | H-18 | 46° 10.482' N | 113° 50.430' W |
| Helispot | H-2 | 46° 08.480' N | 113° 52.030' W |
| Helispot | H-3 | 46° 09.491' N | 113° 49.059' W |
| Helispot | H-4 | 46° 09.603' N | 113° 47.535' W |
| Helispot | H-47 | 46° 10.945' N | 113° 46.933' W |
| Helispot | H-48 | 46° 10.872' N | 113° 47.270' W |
| Helispot | H-5 | 46° 08.633' N | 113° 48.770' W |
| Helispot | H-50 | 46° 11.382' N | 113° 48.318' W |
| Helispot | H-52 | 46° 11.470' N | 113° 49.082' W |
| Helispot | H-74 | 46° 09.867' N | 113° 40.532' W |
| Helispot | H-91 | 46° 12.005' N | 113° 44.347' W |
| Helispot | H-92 | 46° 10.573' N | 113° 45.765' W |
| Helispot | H-93 | 46° 07.591' N | 113° 41.156' W |
| Helispot | H-94 | 46° 08.015' N | 113° 43.424' W |
| Helispot | H-96 | 46° 08.320' N | 113° 44.140' W |
| Sling Site | Sling 1 | 46° 14.745' N | 113° 43.625' W |
| Sling Site | Sling 2 | 46° 14.725' N | 113° 43.762' W |
| Sling Site | Sling 3 | 46° 14.910' N | 113° 43.680' W |

