

Ops Overview

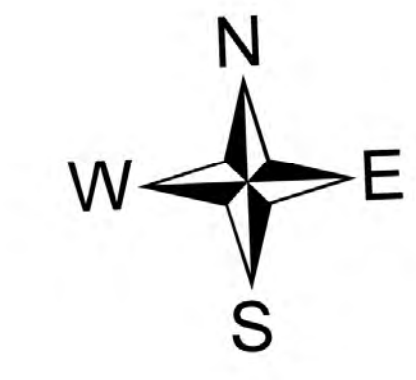
Hog Trough
MT-BRF-022161
1,620 acres

Fuse Lake
MT-BDF-006232
17 acres

8/20/2022

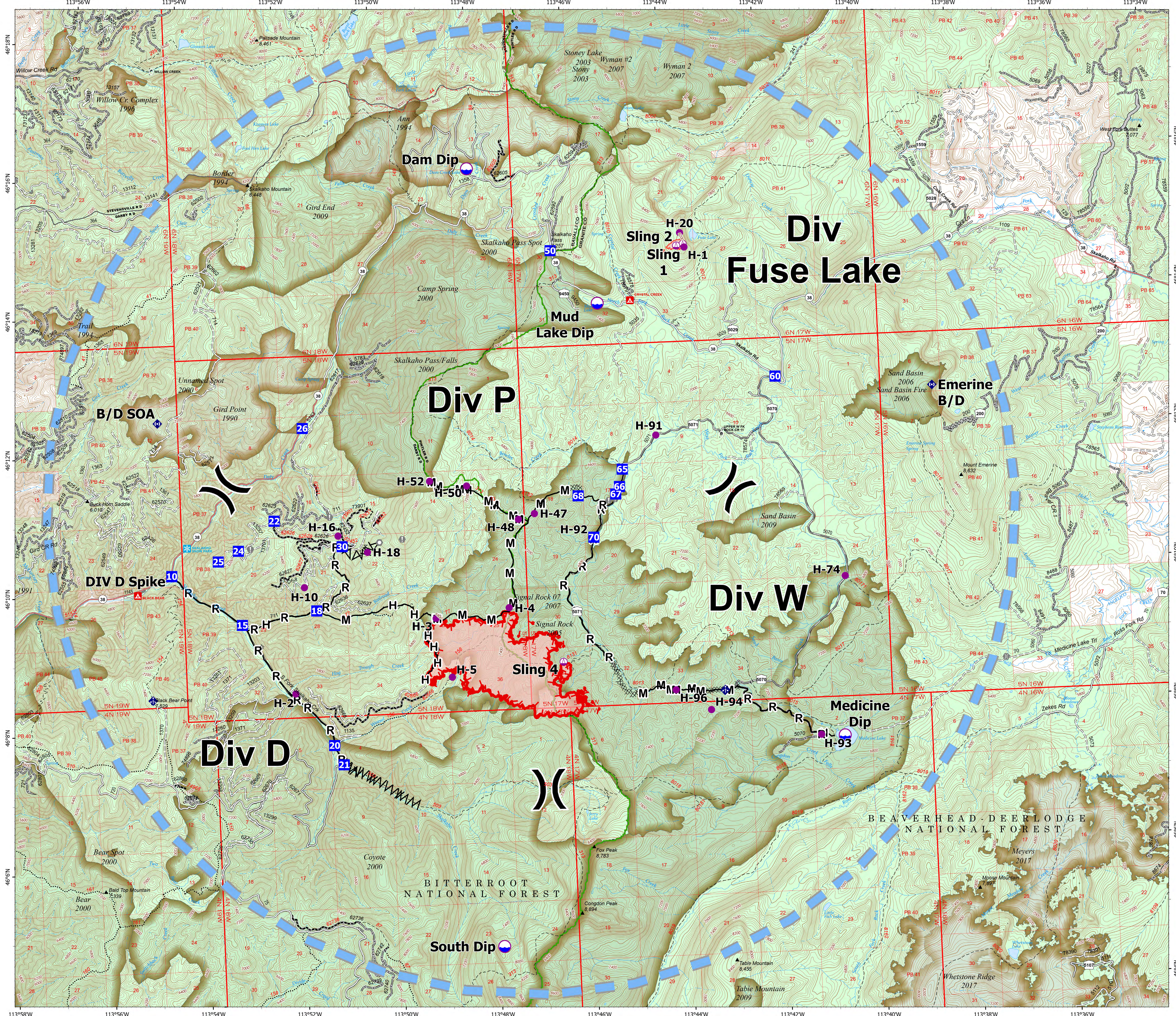
Acres from IR on 8/18/22 2209

- Drop Point
- Camp
- Dip Site
- Helispot
- Sling Site
- X Division Break
- Value at Risk
- Other
- Landmark
- Bridge
- ◆ Mobile Weather Unit
- ◆ Repeater
- XXX Completed Dozer Line
- AA Completed Fuel Break
- H Completed Hand Line
- M Completed Mixed Construction Line
- R Completed Road as Line
- Access or Improved Road
- Temporary Flight Restriction
- Uncontained
- Wildfire Daily Fire Perimeter
- State Secondary Route
- State Route Not Paved
- Gravel Road
- Dirt Road
- Unimproved Road
- USFS Motorcycle Trail
- Motorized Trail
- Forest Service Roads Closed
- Paved Roads
- Dirt (Not Paved)
- Forest Service Land
- Fire History



0 0.5 1 2 Miles

8/20/2022 0531
North American 1983 Datum, Lat/Long Grid



113°58'W 113°56'W 113°54'W 113°52'W 113°50'W 113°48'W 113°46'W 113°44'W 113°42'W 113°40'W 113°38'W 113°36'W