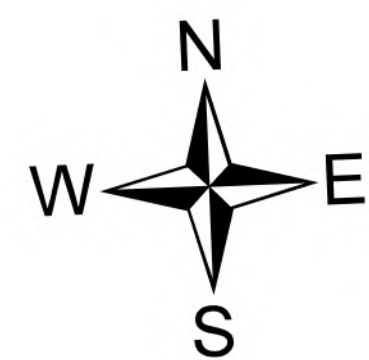


Briefing

Fuse Lake
MT-BDF-006232
17 acres
8/22/2022

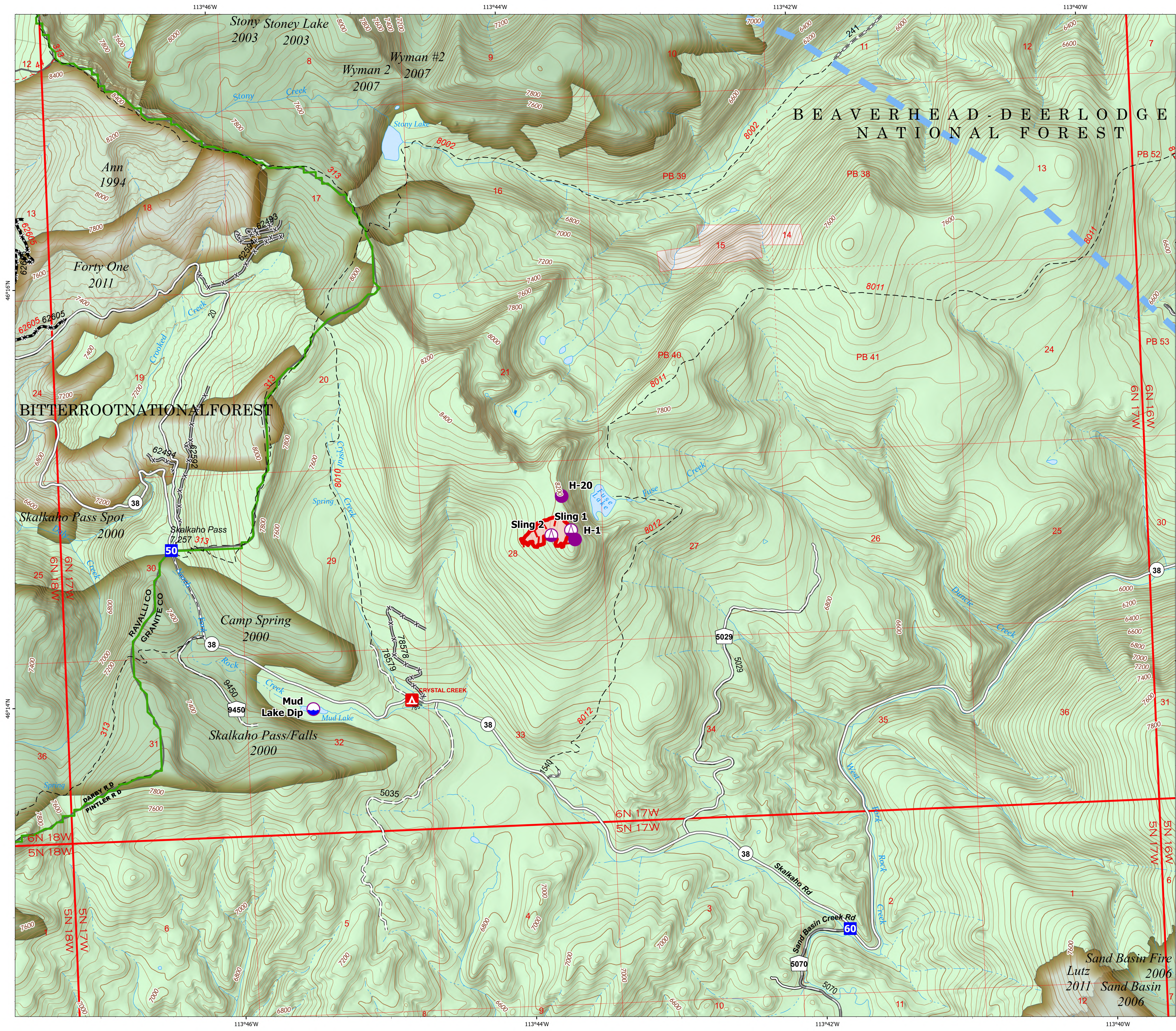
Acres from IR on 8/22/22 0014

- Dip Site
- Helispot
- Sling Site
- Drop Point
- Temporary Flight Restriction
- Uncontained
- Wildfire Daily Fire Perimeter
- State Route Not Paved
- Gravel Road
- Dirt Road
- Unimproved Road
- Motorized Trail
- Forest Service Roads Closed
- Dirt (Not Paved)
- Forest Service Land
- Fire History



0 0.13 0.25 0.5
Miles

8/22/2022 0847
North American 1983 Datum, Lat/Long Grid



Sand Basin Fire
Lutz 2006
2011 Sand Basin
2006