








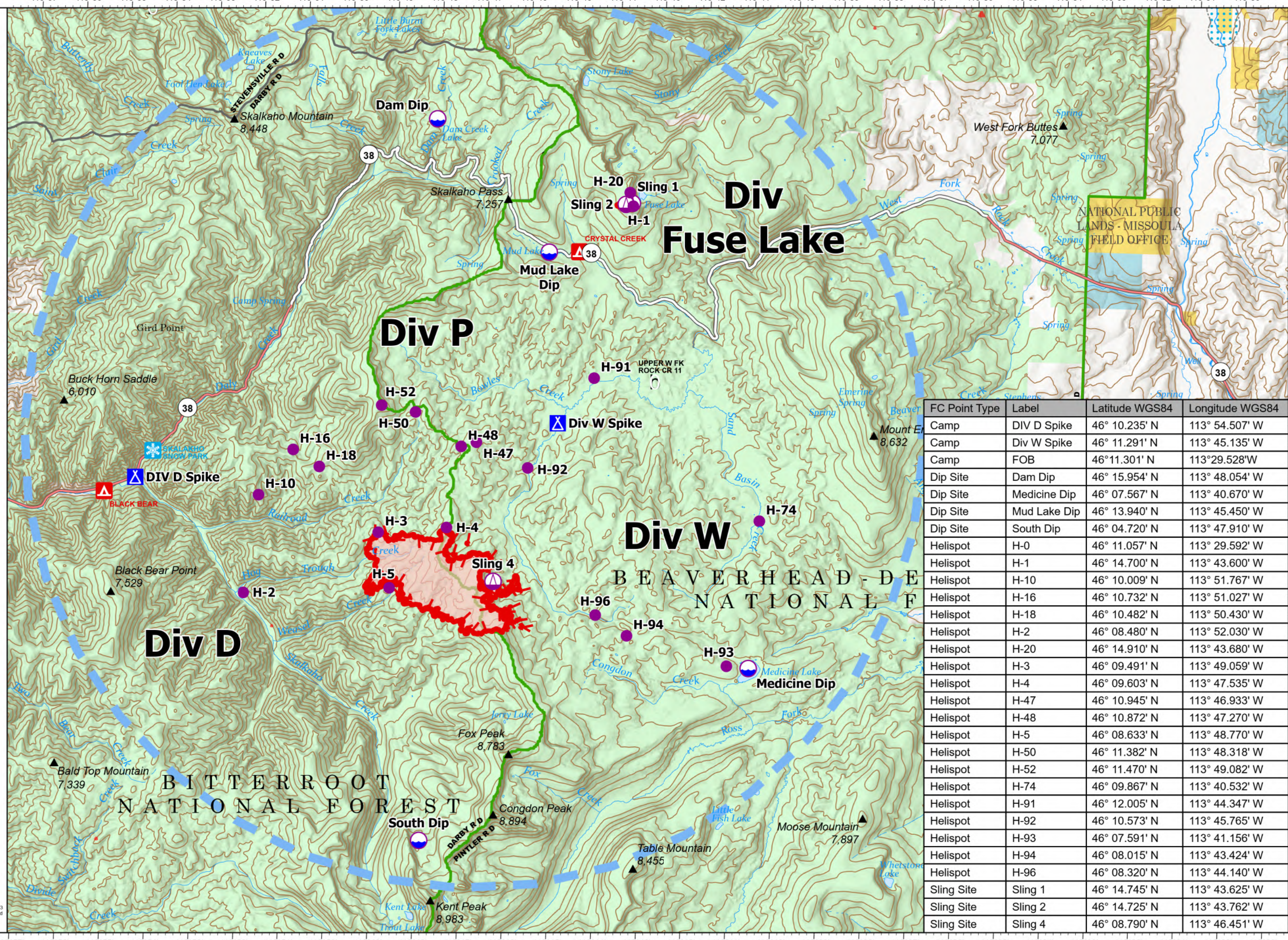
# Pilot Map

Hog Trough  
MT-BRF-022161

1,688 acres

8/22/2022

-  Dip Site
-  Helispot
-  Sling Site
-  Camp
-  Temporary Flight Restriction
-  Uncontained
-  Wildfire Daily Fire Perimeter



FC Point Type	Label	Latitude WGS84	Longitude WGS84
Camp	DIV D Spike	46° 10.235' N	113° 54.507' W
Camp	Div W Spike	46° 11.291' N	113° 45.135' W
Camp	FOB	46° 11.301' N	113° 29.528' W
Dip Site	Dam Dip	46° 15.954' N	113° 48.054' W
Dip Site	Medicine Dip	46° 07.567' N	113° 40.670' W
Dip Site	Mud Lake Dip	46° 13.940' N	113° 45.450' W
Dip Site	South Dip	46° 04.720' N	113° 47.910' W
Helispot	H-0	46° 11.057' N	113° 29.592' W
Helispot	H-1	46° 14.700' N	113° 43.600' W
Helispot	H-10	46° 10.009' N	113° 51.767' W
Helispot	H-16	46° 10.732' N	113° 51.027' W
Helispot	H-18	46° 10.482' N	113° 50.430' W
Helispot	H-2	46° 08.480' N	113° 52.030' W
Helispot	H-20	46° 14.910' N	113° 43.680' W
Helispot	H-3	46° 09.491' N	113° 49.059' W
Helispot	H-4	46° 09.603' N	113° 47.535' W
Helispot	H-47	46° 10.945' N	113° 46.933' W
Helispot	H-48	46° 10.872' N	113° 47.270' W
Helispot	H-5	46° 08.633' N	113° 48.770' W
Helispot	H-50	46° 11.382' N	113° 48.318' W
Helispot	H-52	46° 11.470' N	113° 49.082' W
Helispot	H-74	46° 09.867' N	113° 40.532' W
Helispot	H-91	46° 12.005' N	113° 44.347' W
Helispot	H-92	46° 10.573' N	113° 45.765' W
Helispot	H-93	46° 07.591' N	113° 41.156' W
Helispot	H-94	46° 08.015' N	113° 43.424' W
Helispot	H-96	46° 08.320' N	113° 44.140' W
Sling Site	Sling 1	46° 14.745' N	113° 43.625' W
Sling Site	Sling 2	46° 14.725' N	113° 43.762' W
Sling Site	Sling 4	46° 08.790' N	113° 46.451' W

Scale: 1:100,000

8/22/2022 0830  
North American 1983  
Datum: Lat, Long Grid

Pilot Map