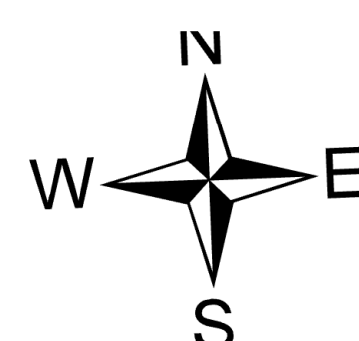


Briefing

Hog Trough
MT-BRF-022161
1,701 acres
8/23/2022

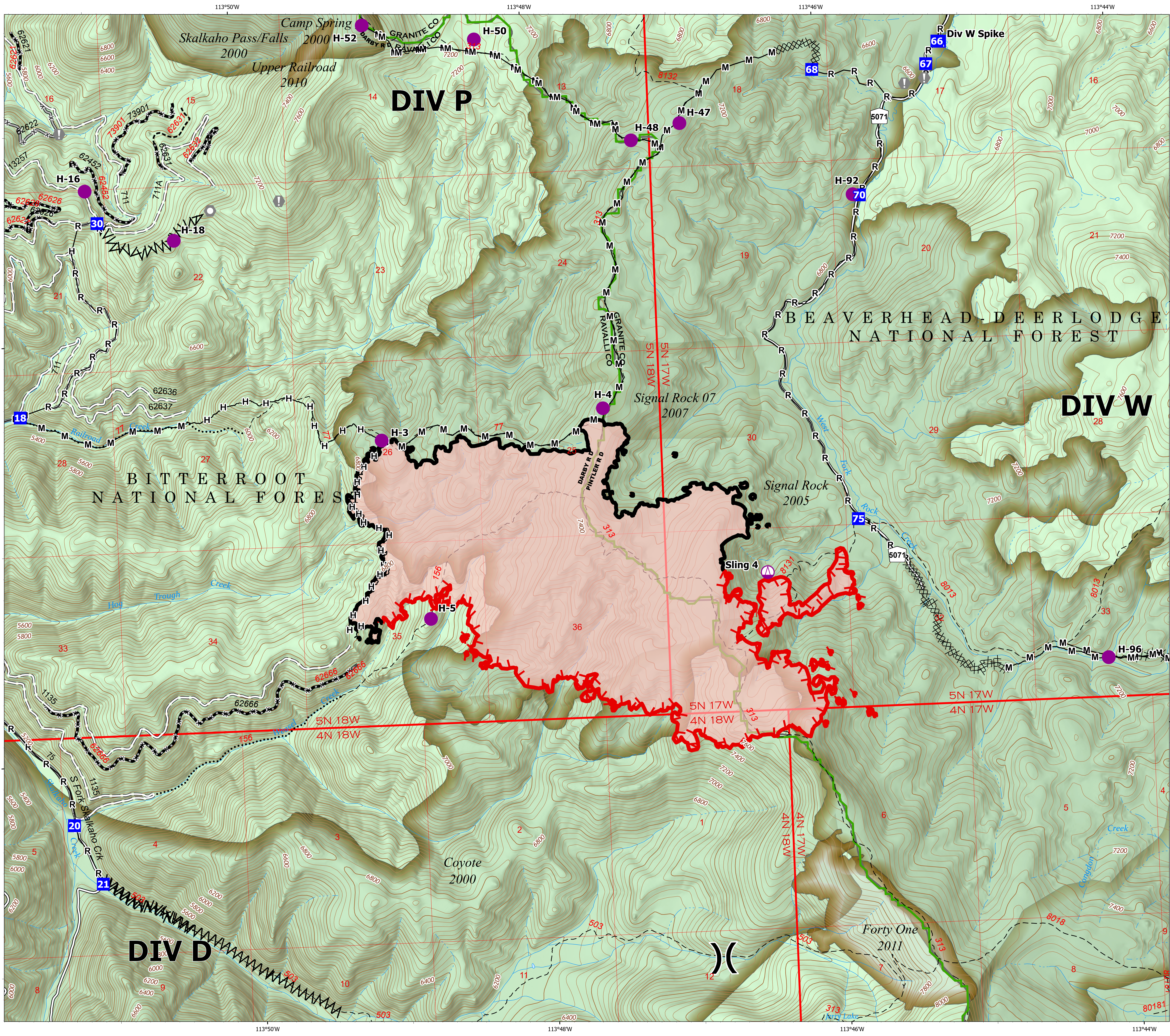
Acres from IR on 8/22/22 2333

- Helispot
- ⚡ Sling Site
-) Division Break
- Drop Point
- ⛑ Camp
- ⚠ Value at Risk
- Landmark
- ⊗ Completed Dozer Line
- ⚡ Completed Fuel Break
- Completed Hand Line
- Completed Mixed Construction Line
- Completed Road as Line
- ▬ Contained
- ▬ Uncontained
- ▬ Wildfire Daily Fire Perimeter
- Gravel Road
- == Unimproved Road
- ⋯ USFS Motorcycle Trail
- - - Motorized Trail
- ⊗ Forest Service Roads Closed
- Dirt (Not Paved)
- Forest Service Land
- Fire History



0 0.13 0.25 0.5
Miles

8/23/2022 0553
North American 1983 Datum, Lat/Long Grid



113°50'W

113°48'W

113°46'W

113°44'W

46°10'N

46°8'N

46°10'N

46°8'N