

Ops Overview

Hog Trough
MT-BRF-022161
1,701 acres

Fuse Lake
MT-BDF-006232
17 acres

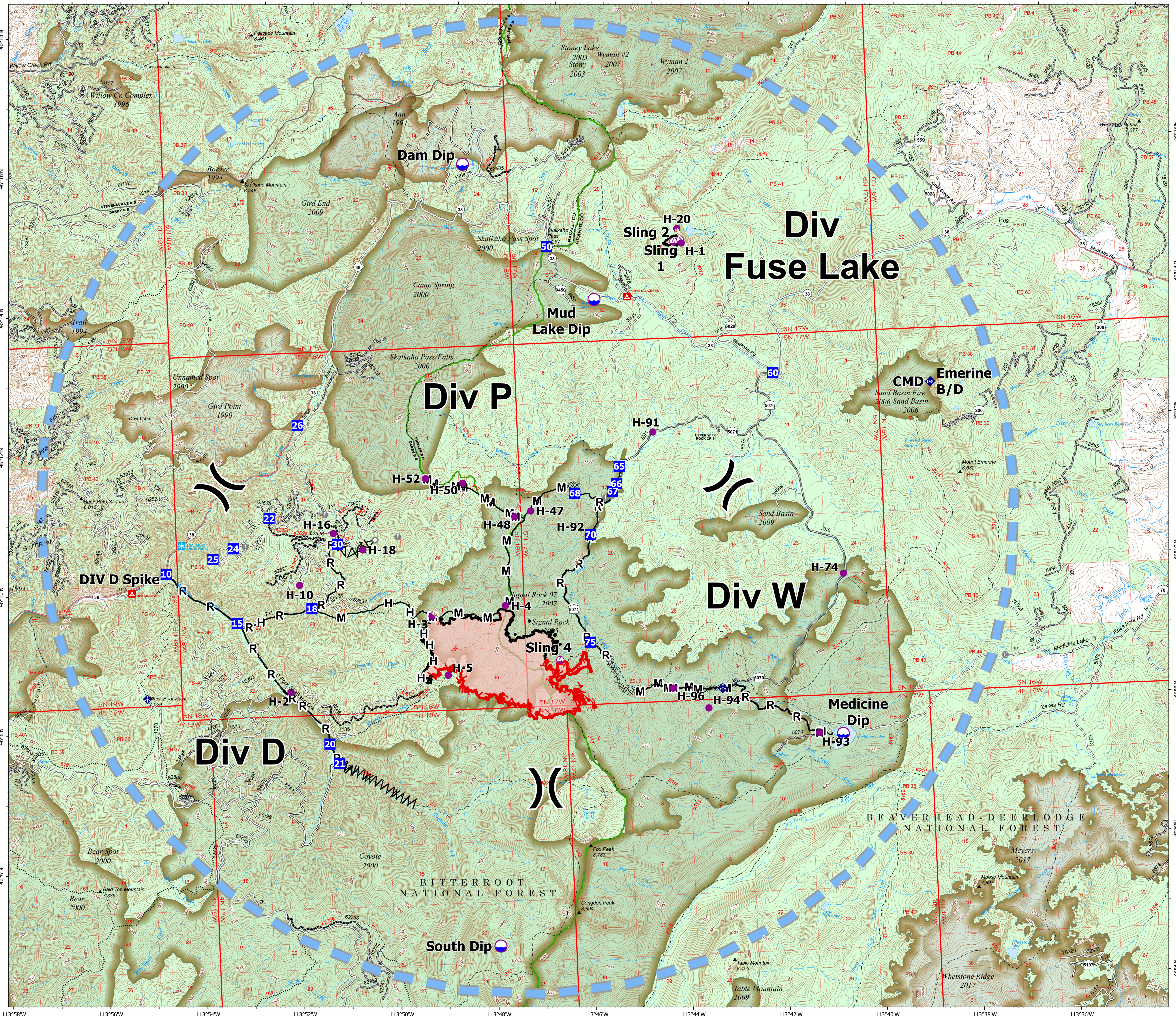
8/24/2022

Acres from IR on 8/22/22 2333

- Drop Point
- Camp
- Dip Site
- Helispot
- Sling Site
- Division Break
- Value at Risk
- Other
- Landmark
- Bridge
- Mobile Weather Unit
- Repeater
- Completed Dozer Line
- Completed Fuel Break
- Completed Hand Line
- Completed Mixed Construction Line
- Completed Road as Line
- Access or Improved Road
- Temporary Flight Restriction
- Contained
- Uncontained
- Wildfire Daily Fire Perimeter
- State Secondary Route
- State Route Not Paved
- Gravel Road
- Dirt Road
- Unimproved Road
- USFS Motorcycle Trail
- Motorized Trail
- Forest Service Roads Closed
- Paved Roads
- Dirt (Not Paved)
- Forest Service Land
- Fire History



8/24/2022 0459
North American 1983 Datum, Lat/Long Grid



113°58'W 113°56'W 113°54'W 113°52'W 113°50'W 113°48'W 113°46'W 113°44'W 113°42'W 113°40'W 113°38'W 113°36'W

46°18'N 46°16'N 46°14'N 46°12'N 46°10'N 46°8'N 46°6'N 46°4'N 46°2'N