

Ops Overview

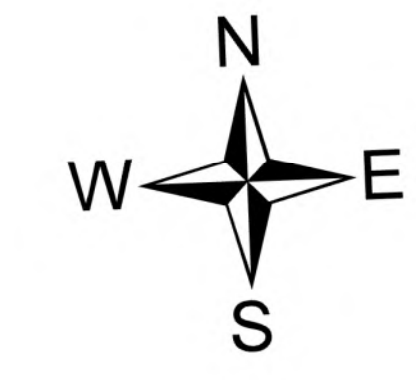
Hog Trough
MT-BRF-022161
1,701 acres

Fuse Lake
MT-BDF-006232
17 acres

8/25/2022

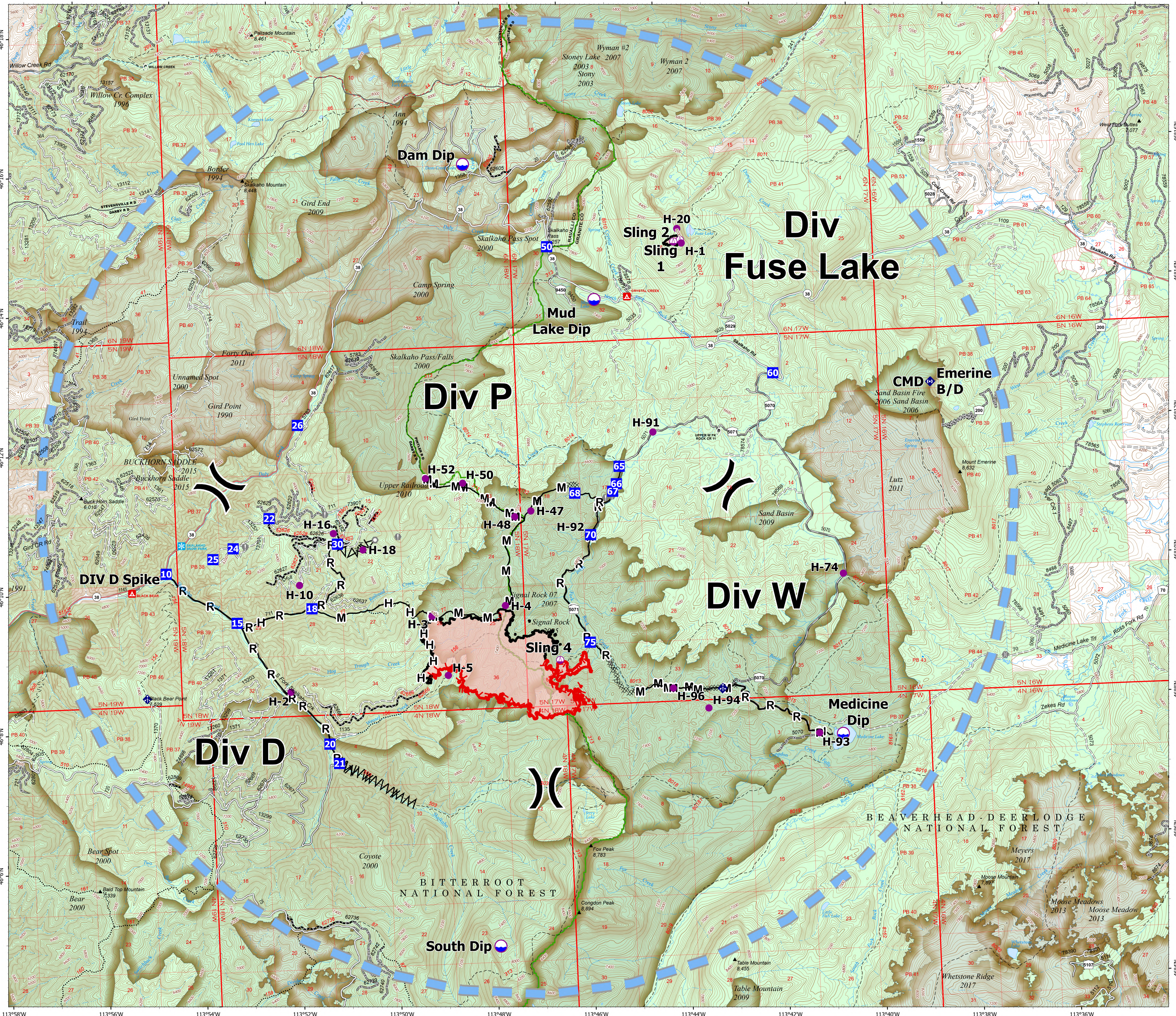
Acres from IR on 8/22/22 2333

- Drop Point
- ⊠ Camp
- ⊙ Dip Site
- Helispot
- ⊙ Sling Site
- ⊗ Division Break
- ⊙ Value at Risk
- Other
- Landmark
- ⊙ Bridge
- ⊙ Mobile Weather Unit
- ⊙ Repeater
- ⊙ Completed Dozer Line
- ⊙ Completed Fuel Break
- ⊙ Completed Hand Line
- ⊙ Completed Mixed Construction Line
- ⊙ Completed Road as Line
- ⊙ Access or Improved Road
- ⊙ Temporary Flight Restriction
- ⊙ Contained
- ⊙ Uncontained
- ⊙ Wildfire Daily Fire Perimeter
- ⊙ State Secondary Route
- ⊙ State Route Not Paved
- ⊙ Gravel Road
- ⊙ Dirt Road
- ⊙ Unimproved Road
- ⊙ USFS Motorcycle Trail
- ⊙ Motorized Trail
- ⊙ Forest Service Roads Closed
- ⊙ Paved Roads
- ⊙ Dirt (Not Paved)
- ⊙ Forest Service Land
- ⊙ Fire History



0 0.5 1 2 Miles

8/25/2022 0444
North American 1983 Datum, Lat/Long Grid



113°58'W 113°56'W 113°54'W 113°52'W 113°50'W 113°48'W 113°46'W 113°44'W 113°42'W 113°40'W 113°38'W 113°36'W