

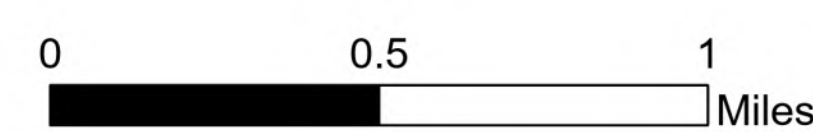
Ops

Hog Trough
MT-BRF-022161

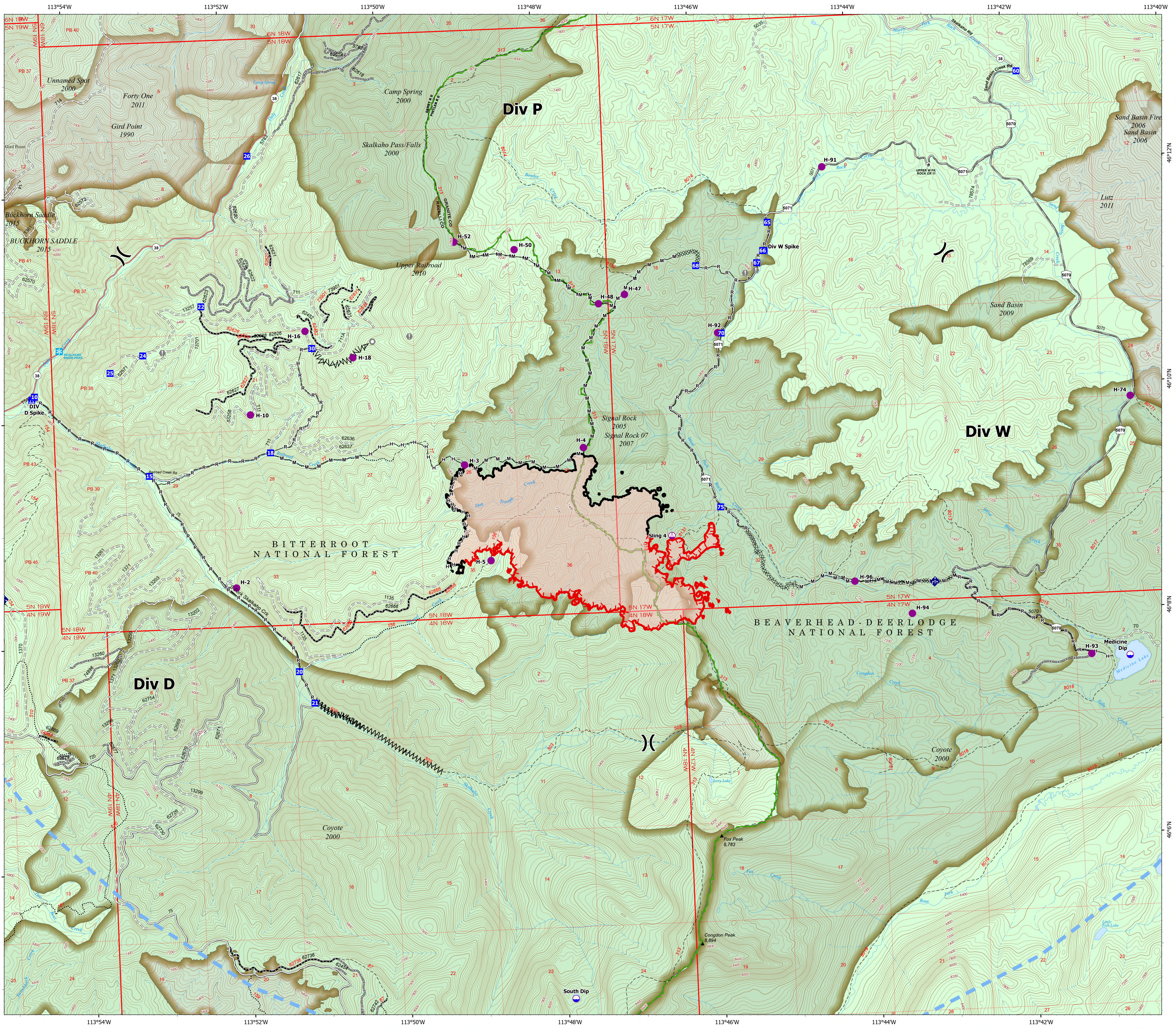
1,701 acres
8/26/2022

Acres from IR on 8/25/22 2238

- Dip Site
- Helispot
- Slings
- Division Break
- Drop Point
- Camp
- Value at Risk
- Landmark
- Mobile Weather Unit
- Completed Dozer Line
- Completed Fuel Break
- Completed Hand Line
- Completed Mixed Construction Line
- Completed Road as Line
- Temporary Flight Restriction
- Contained
- Uncontained
- Wildfire Daily Fire Perimeter
- State Secondary Route
- State Route Not Paved
- Gravel Road
- Dirt Road
- Unimproved Road
- USFS Motorcycle Trail
- Motorized Trail
- Forest Service Roads Closed
- Dirt (Not Paved)
- Forest Service Land
- Fire History



8/26/2022 0445
North American 1983 Datum, Lat,Long Grid



Div P

Div W

Div D

BITTERROOT NATIONAL FOREST

BEAVERHEAD-DEERLODGE NATIONAL FOREST

South Dip

113°54'W 113°52'W 113°50'W 113°48'W 113°46'W 113°44'W 113°42'W

46°12'N 46°10'N 46°8'N 46°6'N