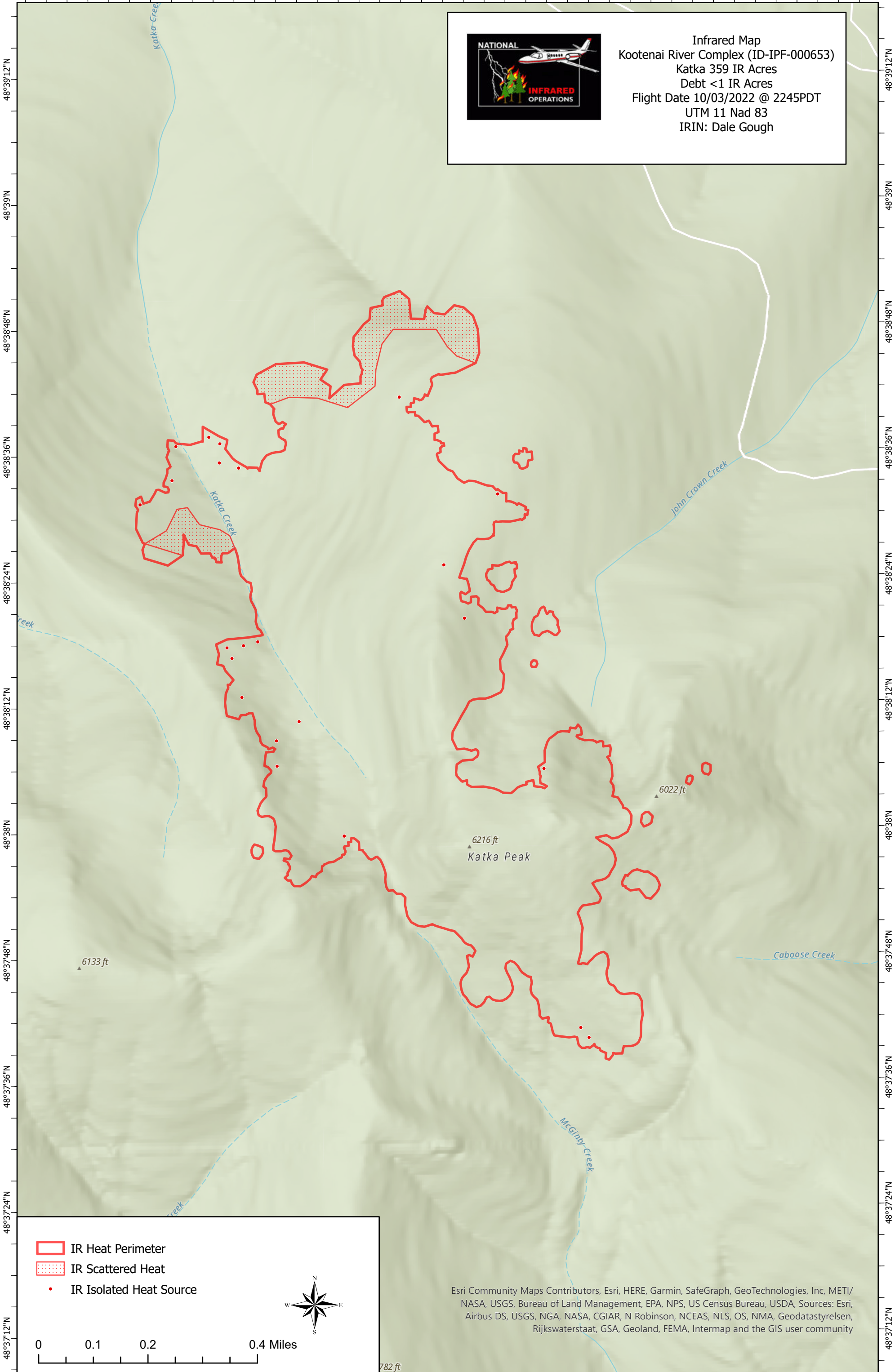


116°10'48"W 116°10'36"W 116°10'24"W 116°10'12"W 116°10'W 116°9'48"W 116°9'36"W 116°9'24"W 116°9'12"W 116°9'W



**Infrared Map**  
Kootenai River Complex (ID-IPF-000653)  
Katka 359 IR Acres  
Debt <1 IR Acres  
Flight Date 10/03/2022 @ 2245PDT  
UTM 11 Nad 83  
IRIN: Dale Gough

- IR Heat Perimeter
- IR Scattered Heat
- IR Isolated Heat Source



0 0.1 0.2 0.4 Miles

Esri Community Maps Contributors, Esri, HERE, Garmin, SafeGraph, GeoTechnologies, Inc, METI/ NASA, USGS, Bureau of Land Management, EPA, NPS, US Census Bureau, USDA, Sources: Esri, Airbus DS, USGS, NGA, NASA, CGIAR, N Robinson, NCEAS, NLS, OS, NMA, Geodatastyrelsen, Rijkswaterstaat, GSA, Geoland, FEMA, Intermap and the GIS user community

782 ft

116°10'48"W 116°10'36"W 116°10'24"W 116°10'12"W 116°10'W 116°9'48"W 116°9'36"W 116°9'24"W 116°9'12"W 116°9'W