

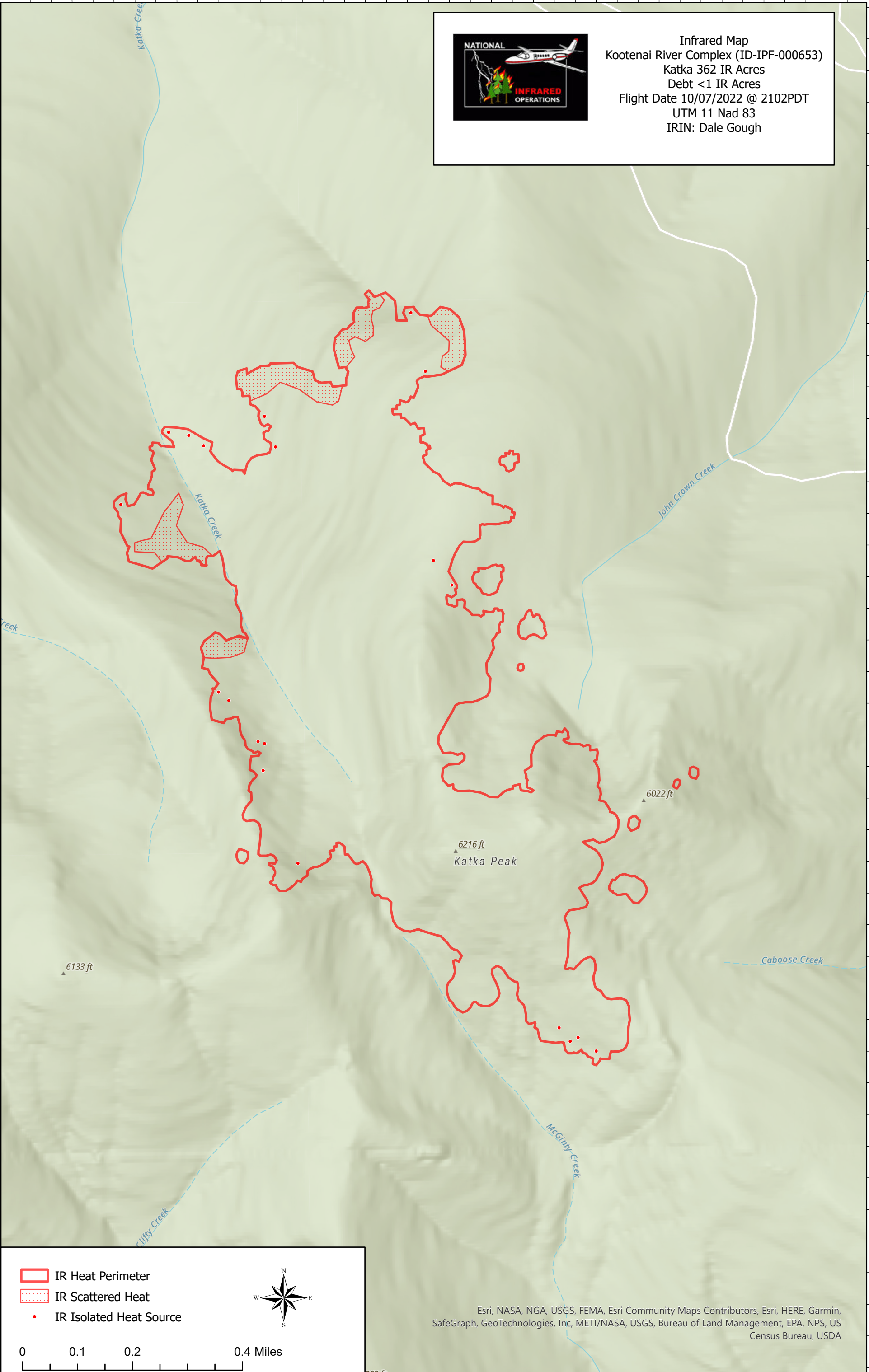
116°10'48"W 116°10'36"W 116°10'24"W 116°10'12"W 116°10'W 116°9'48"W 116°9'36"W 116°9'24"W 116°9'12"W 116°9'W

48°37'12"N
48°37'24"N
48°37'36"N
48°37'48"N
48°38'0"N
48°38'12"N
48°38'24"N
48°38'36"N
48°38'48"N
48°39'0"N
48°39'12"N

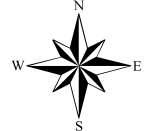
48°37'12"N
48°37'24"N
48°37'36"N
48°37'48"N
48°38'0"N
48°38'12"N
48°38'24"N
48°38'36"N
48°38'48"N
48°39'0"N
48°39'12"N



Infrared Map
Kootenai River Complex (ID-IPF-000653)
Katka 362 IR Acres
Debt <1 IR Acres
Flight Date 10/07/2022 @ 2102PDT
UTM 11 Nad 83
IRIN: Dale Gough



- IR Heat Perimeter
- IR Scattered Heat
- IR Isolated Heat Source



0 0.1 0.2 0.4 Miles

Esri, NASA, NGA, USGS, FEMA, Esri Community Maps Contributors, Esri, HERE, Garmin, SafeGraph, GeoTechnologies, Inc, METI/NASA, USGS, Bureau of Land Management, EPA, NPS, US Census Bureau, USDA

782 ft