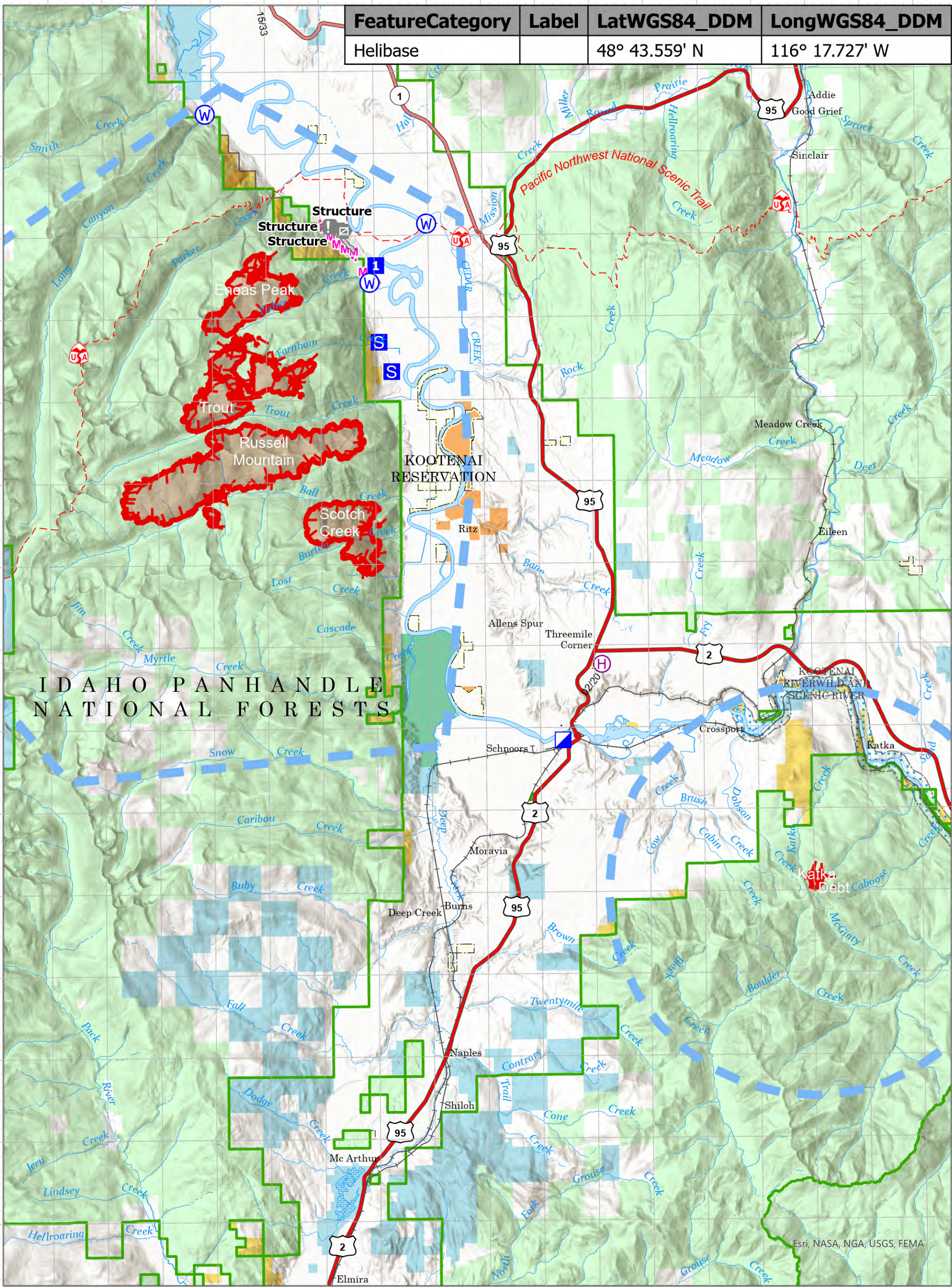


Feature	Category	Label	LatWGS84_DDM	LongWGS84_DDM
Helibase			48° 43.559' N	116° 17.727' W

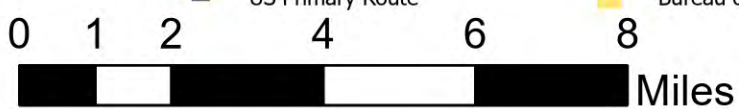


Air Operations

Kootenai River Complex
2022-IDIPF-000653
9/5/2022

10,779 acres at 9/4/22 2101
Acres from IR Acres from IR A

- Helibase
- Water Source
- US Secondary Route
- Incident Command Post
- Planned Mixed Construction Line
- State Primary Route
- Drop Point
- Access or Improved Road
- Forest Service Land
- Staging Area
- Temporary Flight Restriction
- State Public Lands
- Value at Risk
- Wildfire Daily Fire Perimeter
- U.S. Fish Wildlife Service Lands
- Gate
- US Primary Route
- Bureau of Land Management Lands



NR Team 4
9/5/2022 0552
North American 1983 Datum. Lat/Long Grid

