

# Operations

South

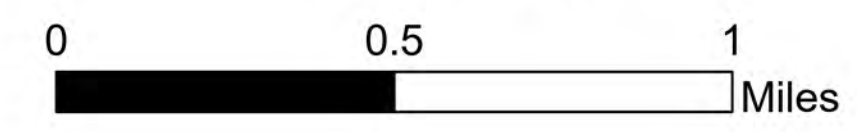
Kootenai River Complex

2022-IDIPF-000653

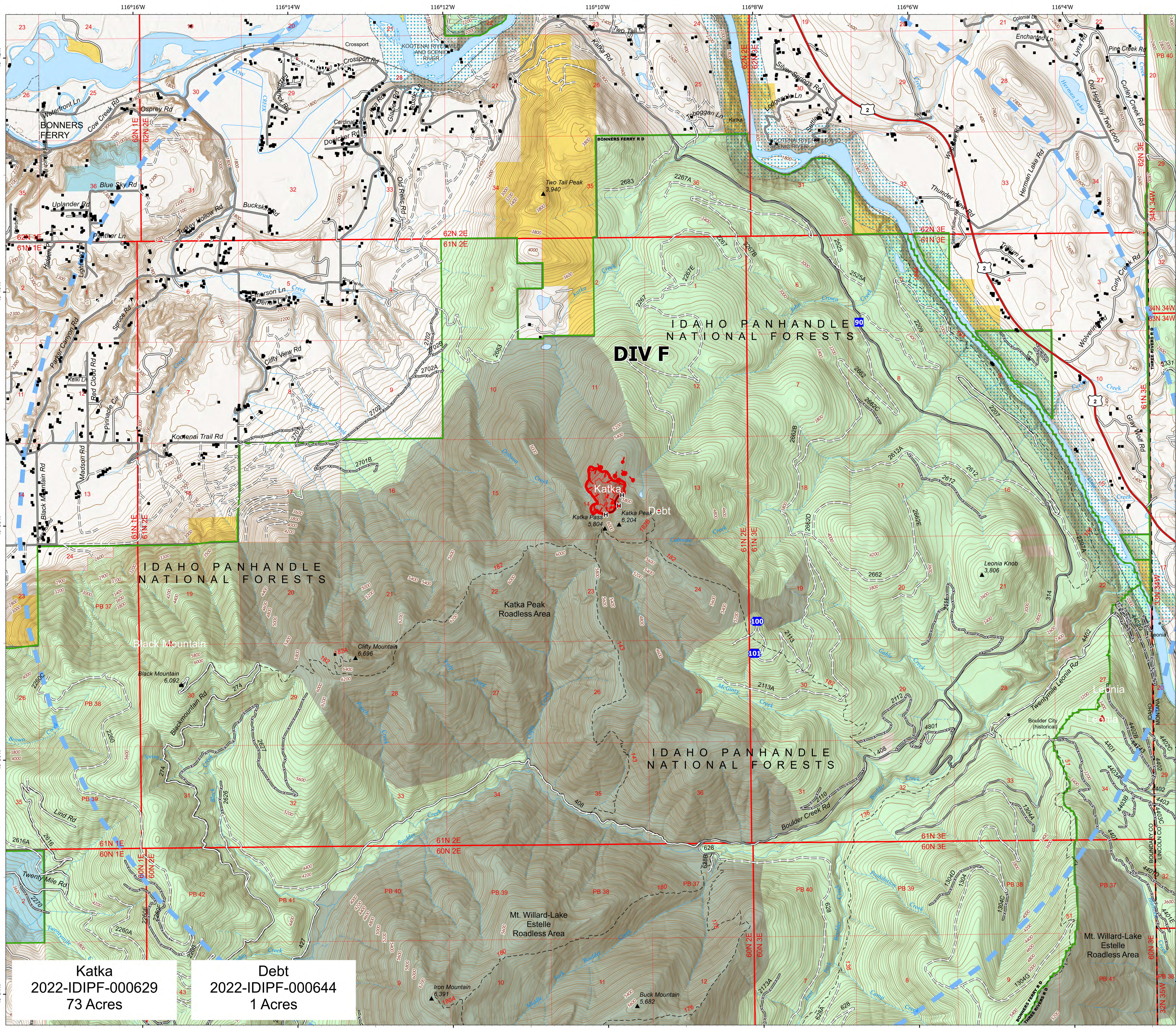
9/6/2022

12,487 acres at 9/5/22 2027

Acres from IR



- Drop Point
- IR Isolated Heat Source
- Completed Hand Line
- Temporary Flight Restriction
- Wildfire Daily Fire Perimeter
- IR Heat Perimeter
- IR Intense Heat
- IR Scattered Heat
- US Primary Route
- Paved Roads
- Dirt (Not Paved)
- Forest Service Land
- State Public Lands
- Bureau of Land Management Lands
- Idaho Structures



NR Team 4  
9/6/2022 0525  
North American 1983 Datum, Lat/Long Grid



**Katka**  
2022-IDIPF-000629  
73 Acres

**Debt**  
2022-IDIPF-000644  
1 Acres

IDAHO PANHANDLE NATIONAL FORESTS

IDAHO PANHANDLE NATIONAL FORESTS  
DIV F

IDAHO PANHANDLE NATIONAL FORESTS

Mt. Willard-Lake Estelle Roadless Area

Mt. Willard-Lake Estelle Roadless Area

Katka Peak Roadless Area