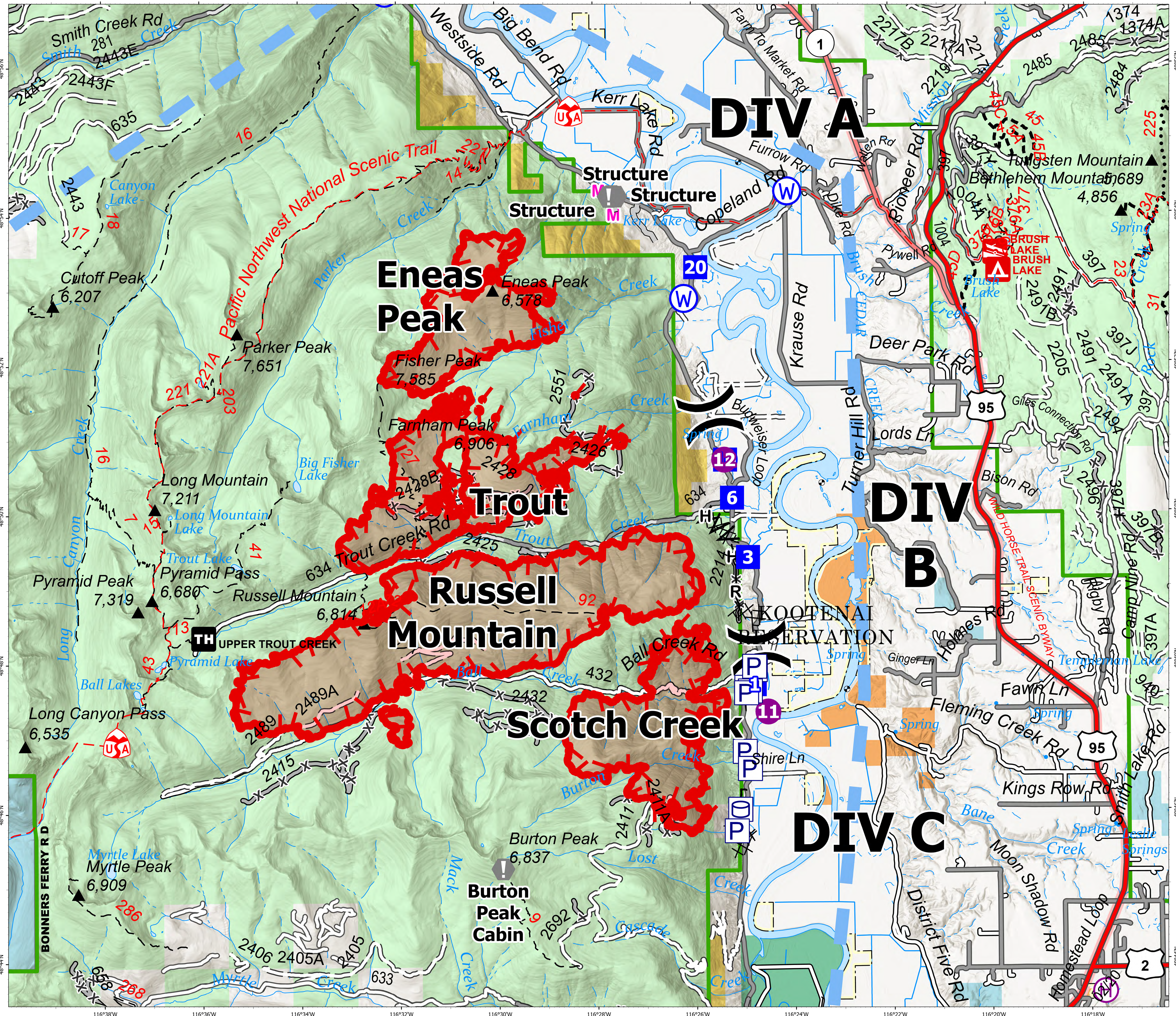


Briefing North

Kootenai River Complex
2022-IDIPF-000653
9/7/2022
13,705 acres at 9/6/22 2144
Acres from IR



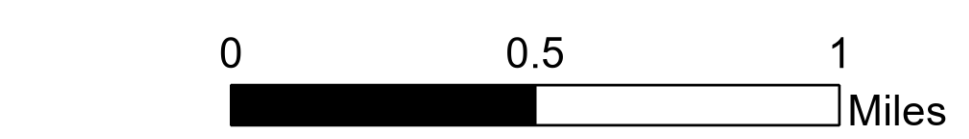
- Helispot
- ⊕ Helibase
- ⌋ Division Break
- Drop Point
- ⚠ Value at Risk
- ⊙ Water Source
- ⌘ Completed Dozer Line
- ⌘ Completed Fuel Break
- ⌘ Completed Hand Line
- ⌘ Completed Road as Line
- M Planned Mixed Construction Line
- Access or Improved Road
- Temporary Flight Restriction
- ▭ Wildfire Daily Fire Perimeter
- US Primary Route
- State Primary Route
- Paved Roads
- Dirt (Not Paved)
- Forest Service Land
- State Public Lands
- U.S. Fish Wildlife Service Lands
- Bureau of Land Management Lands



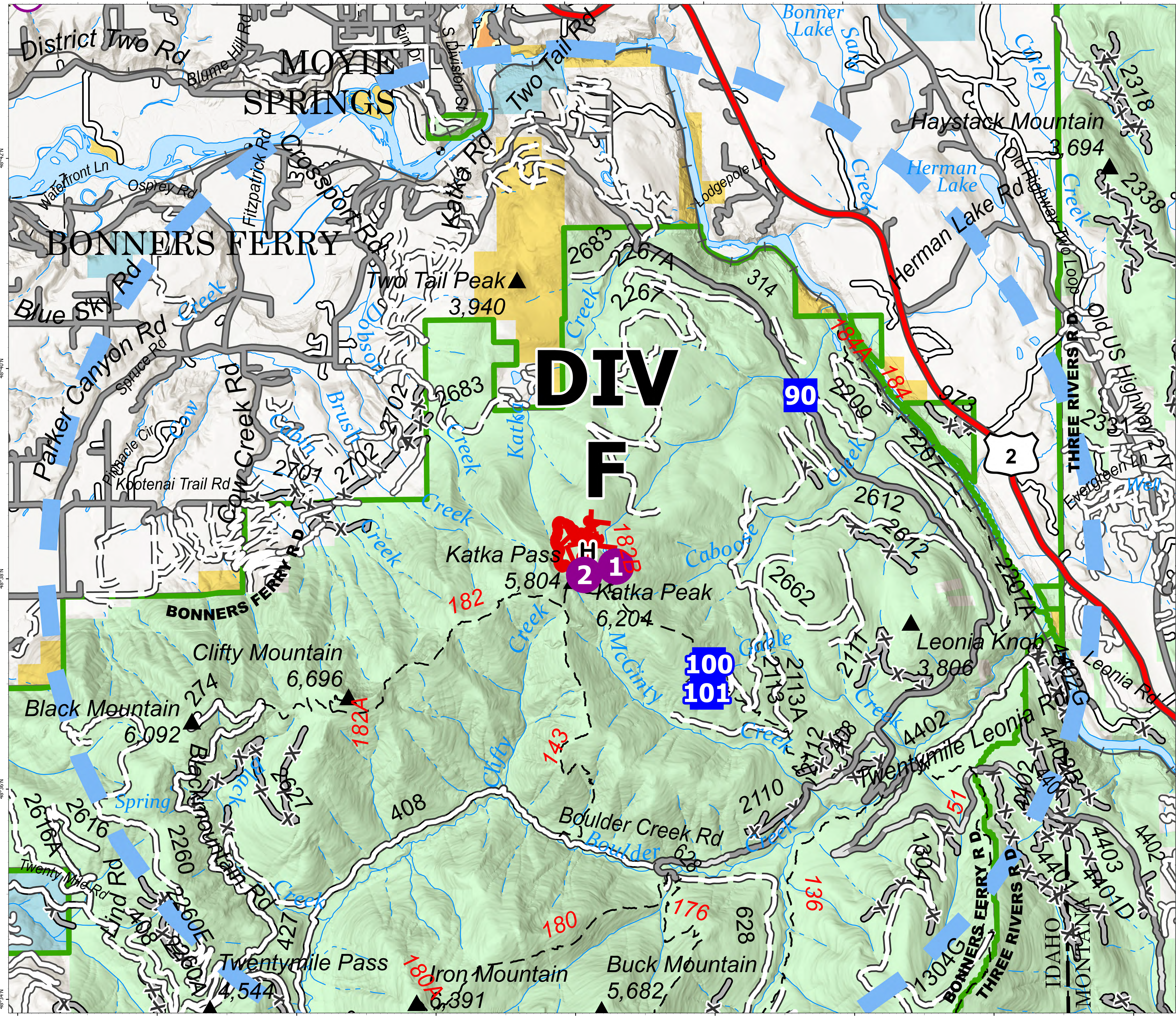
NR Team 4
9/7/2022 0521
North American 1983 Datum, Lat/Long Grid

Briefing South

Kootenai River Complex
2022-IDIPF-000653
9/7/2022
13,705 acres at 9/6/22 2144
Acres from IR



- Helispot
- ⊕ Helibase
- Drop Point
- ▲ Camp
- H- Completed Hand Line
- ▭ Temporary Flight Restriction
- US Primary Route
- Paved Roads
- Dirt (Not Paved)
- Forest Service Land
- State Public Lands
- Bureau of Land Management Lands



NR Team 4
9/7/2022 0522
North American 1983 Datum, Lat/Long Grid