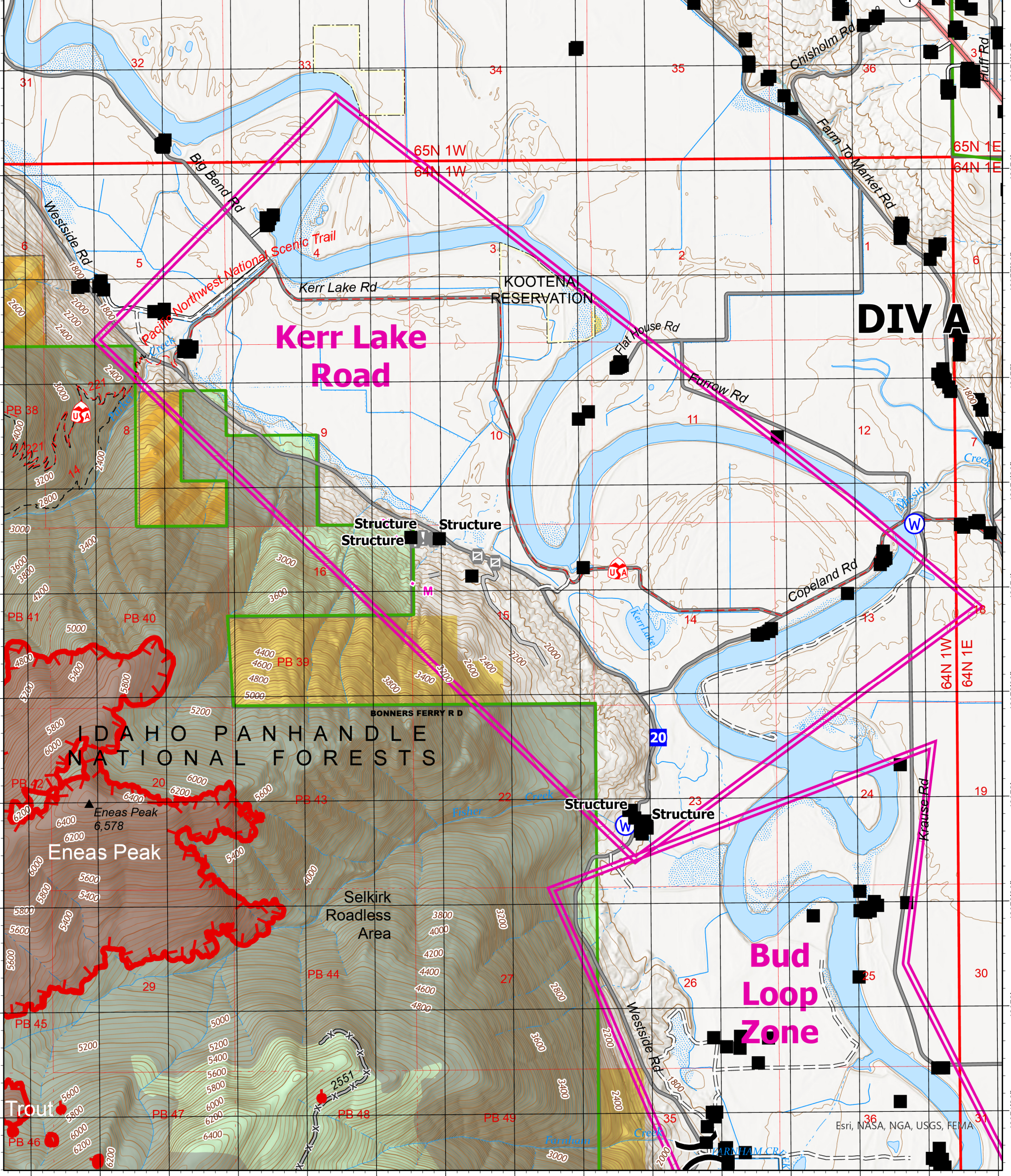


# Legend

- structure\_zones
- Idaho\_Structures\_Points
- Assignment Breaks
  - Division Break
- Logistics
  - Drop Point
- Reference
  - Value at Risk
  - Gate
- Water
  - Water Source
  - Planned Mixed Construction Line
- Access or Improved Road
- State Primary Route
- Paved Roads
- Dirt (Not Paved)
- Bureau of Land Management Wilderness Study Area



## Kerr Lake Zone

Kootenai River Complex  
2022-IDIPF-000653

9/7/2022

13,705 acres at 9/6/22 2144  
Acres from IR



NR Team 4  
9/7/2022 0527  
North American 1983 Datum.