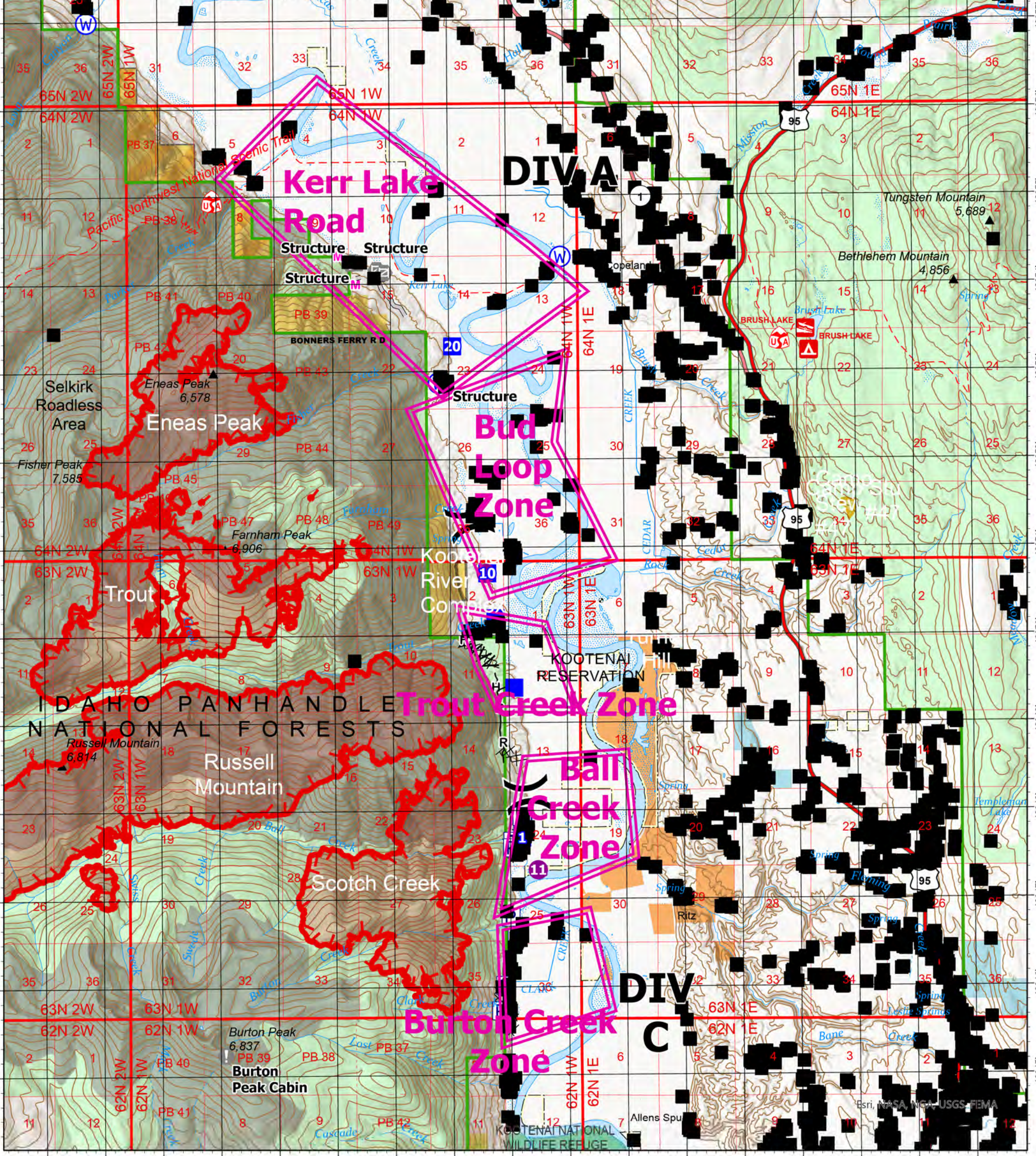


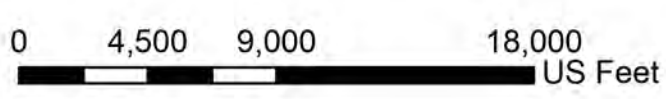
Legend

- structure_zones
- Idaho_Structures_Points
- Air Operations**
- Helispot
- Assignment Breaks**
-) (Division Break
- Logistics**
- Drop Point
- Reference**
- Value at Risk
- Gate
- Water**
- W Water Source
- Completed Dozer Line
- Completed Fuel Break
- Completed Hand Line
- Completed Road as Line
- Planned Mixed Construction Line
- Access or Improved Road
- US Primary Route
- State Primary Route
- Bureau of Land Management Wilderness Study Area



Structure Zones

Kootenai River Complex
 2022-IDIPF-000653
 9/7/2022
 13,705 acres at 9/6/22 2144
 Acres from IR



NR Team 4
 9/7/2022 0528
 North American 1983 Datum.