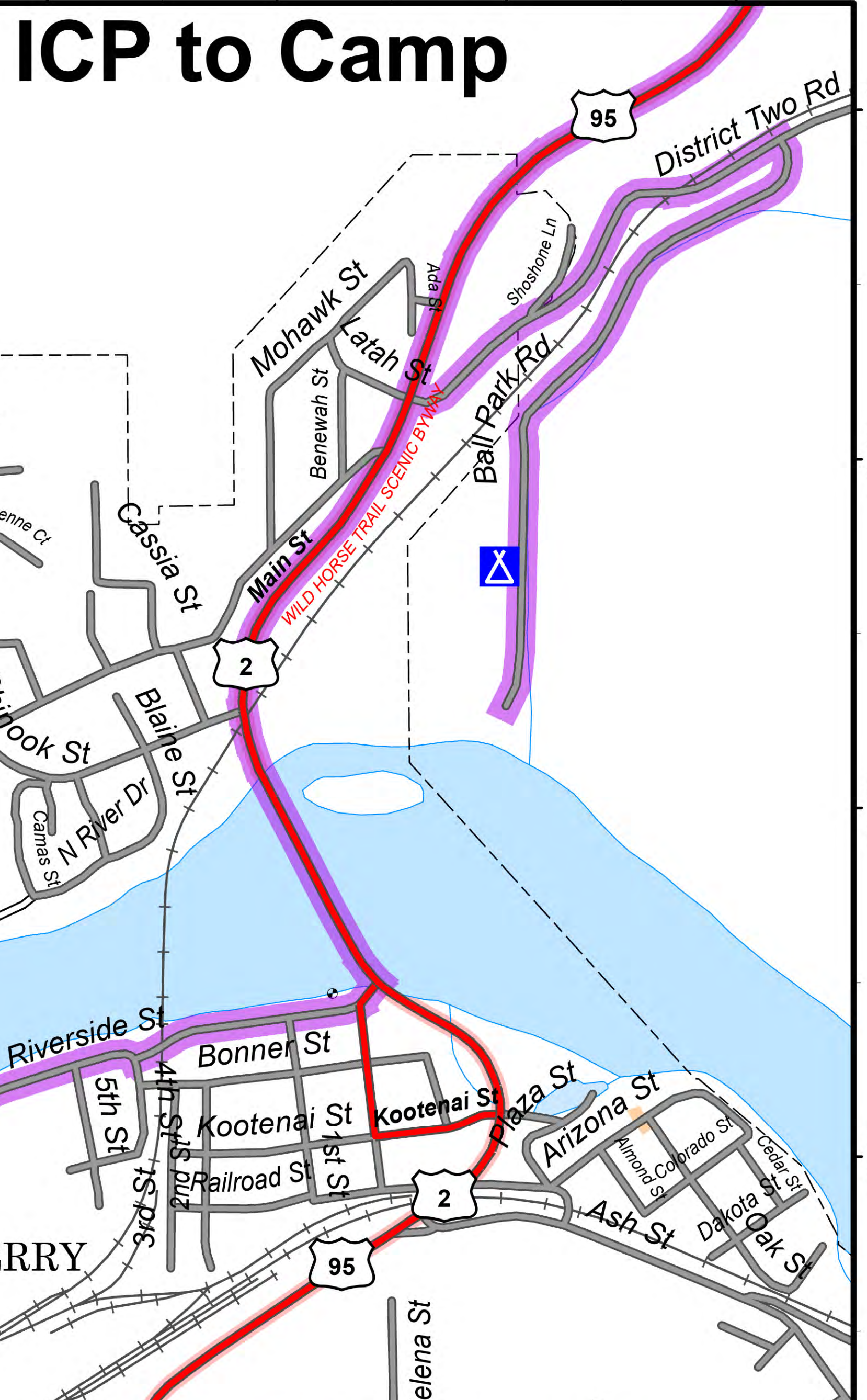
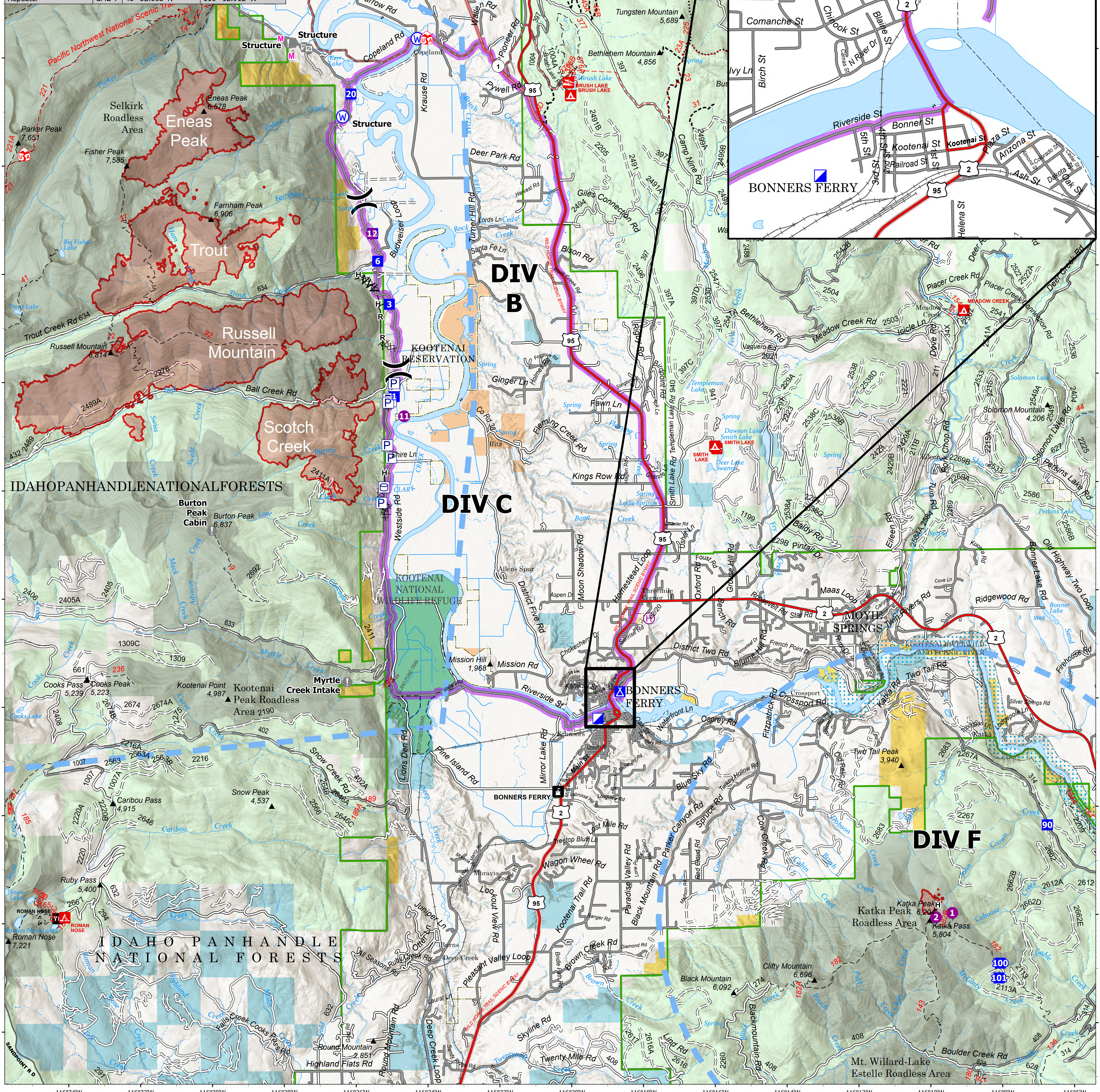


Feature	Category	Label	LatWGS84_DDM	LongWGS84_DDM
Camp			48° 42.210' N	116° 18.561' W
Drop Point	1		48° 47.698' N	116° 24.796' W
Drop Point	10		48° 50.710' N	116° 25.381' W
Drop Point	100		48° 37.121' N	116° 08.032' W
Drop Point	101		48° 36.848' N	116° 08.069' W
Drop Point	20		48° 53.292' N	116° 25.941' W
Drop Point	3		48° 49.403' N	116° 24.913' W
Drop Point	6		48° 50.199' N	116° 25.229' W
Drop Point	90		48° 39.667' N	116° 06.674' W
Helibase			48° 43.559' N	116° 17.727' W
Helispot	1		48° 38.058' N	116° 09.353' W
Helispot	11		48° 47.331' N	116° 24.523' W
Helispot	12		48° 49.768' N	116° 25.382' W
Helispot	2		48° 37.982' N	116° 09.809' W
Incident Command Post			48° 41.718' N	116° 19.180' W
Repeater			48° 52.665' N	116° 12.912' W



# Transportation

**Kootenai River Complex**  
 2022-IDIPF-000653  
 9/7/2022  
 13,705 acres at 9/6/22 2144  
 Acres from IR



- Travel Route
- Pump
- Water Tank
- Helispot
- Helibase
- Division Break
- Incident Command Post
- Drop Point
- Value at Risk
- Gate
- Repeater
- Water Source
- Completed Dozer Line
- Completed Hand Line
- Completed Road as Line
- Planned Mixed Construction Line
- Temporary Flight Restriction
- Wildfire Daily Fire Perimeter
- US Primary Route
- US Secondary Route
- State Primary Route
- Paved Roads
- Dirt (Not Paved)
- Forest Service Land
- State Public Lands
- U.S. Fish Wildlife Service Lands
- Bureau of Land Management Lands

