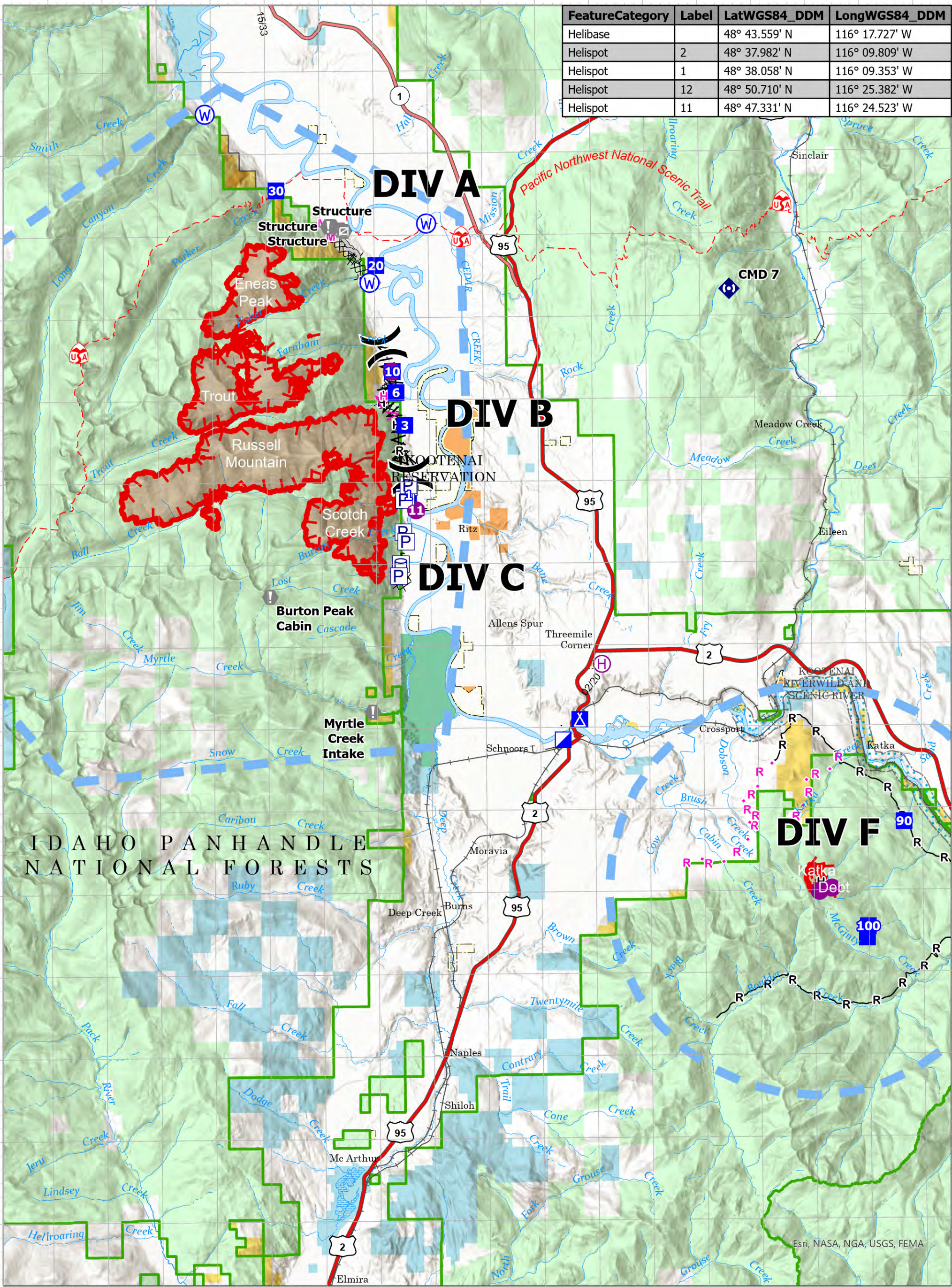


FeatureCategory	Label	LatWGS84_DDM	LongWGS84_DDM
Helibase		48° 43.559' N	116° 17.727' W
Helispot	2	48° 37.982' N	116° 09.809' W
Helispot	1	48° 38.058' N	116° 09.353' W
Helispot	12	48° 50.710' N	116° 25.382' W
Helispot	11	48° 47.331' N	116° 24.523' W

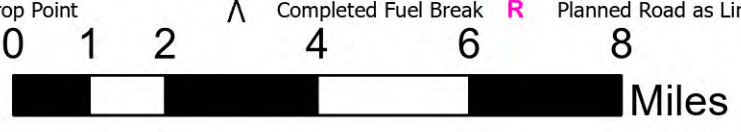


- | | | |
|-----------------------|----------------------|---------------------------------|
| Pump | Camp | Completed Hand Line |
| Water Tank | Value at Risk | Completed Road as Line |
| Helispot | Gate | Planned Dozer Line |
| Helibase | Repeater | Planned Fuel Break |
| Division Break | Water Source | Planned Hand Line |
| Incident Command Post | Completed Dozer Line | Planned Mixed Construction Line |
| Drop Point | Completed Fuel Break | Planned Road as Line |

Air Ops

Kootenai River Complex
 2022-IDIPF-000653
 9/8/2022

15,640 acres at 9/7/22 2130
 Acres from IR Acres from IR



NR Team 4
 9/8/2022 0553
 North American 1983 Datum. Lat/Long Grid



Esri, NASA, NGA, USGS, FEMA