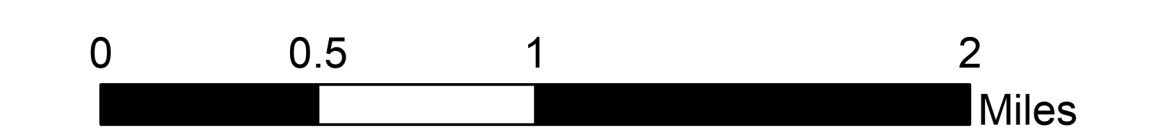


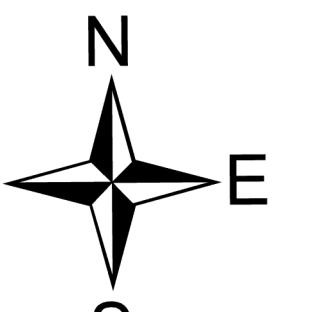
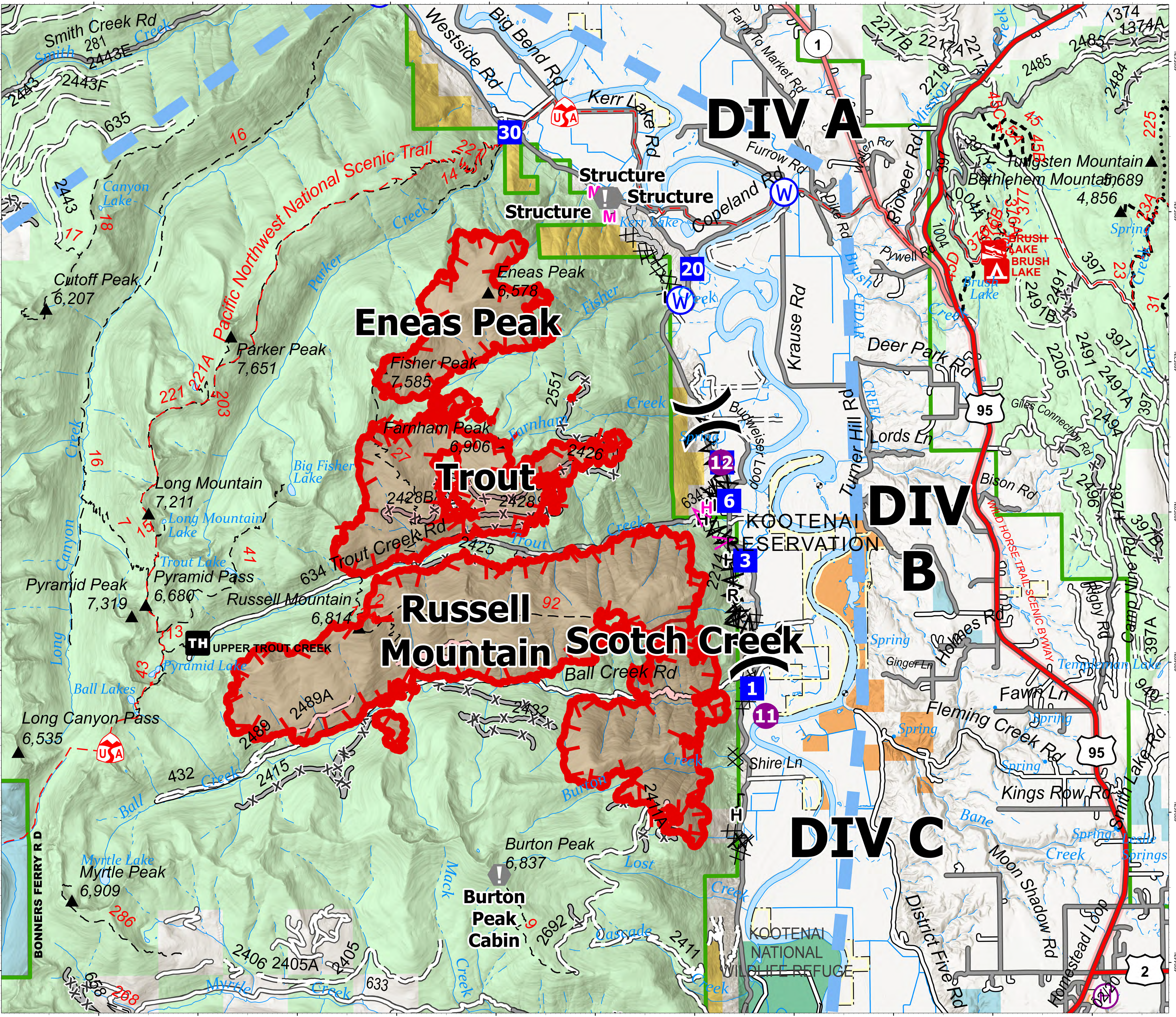
Briefing North

Kootenai River Complex
2022-IDIPF-000653

9/8/2022
15,640 acres at 9/7/22 2130
Acres from IR



- Helispot
- ⊕ Helibase
-) Division Break
- Drop Point
- ⚠ Value at Risk
- ⊙ Water Source
- ⊗ Completed Dozer Line
- ⊗ Completed Fuel Break
- ⊗ Completed Hand Line
- ⊗ Completed Road as Line
- Planned Dozer Line
- ⊗ Planned Fuel Break
- ⊗ Planned Hand Line
- ⊗ Planned Mixed Construction Line
- Access or Improved Road
- ▭ Temporary Flight Restriction
- ▭ Wildfire Daily Fire Perimeter
- ▭ US Primary Route
- ▭ State Primary Route
- ▭ Paved Roads
- ▭ Dirt (Not Paved)
- ▭ Forest Service Land
- ▭ State Public Lands
- ▭ U.S. Fish Wildlife Service Lands
- ▭ Bureau of Land Management Lands

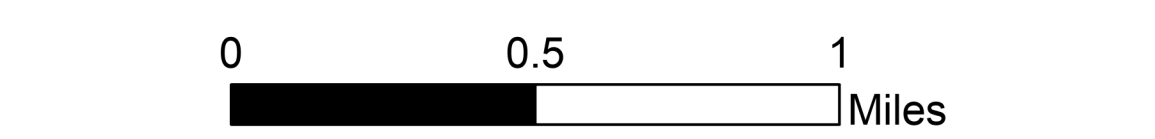


NR Team 4
9/8/2022 0608
North American 1983 Datum, Lat/Long Grid

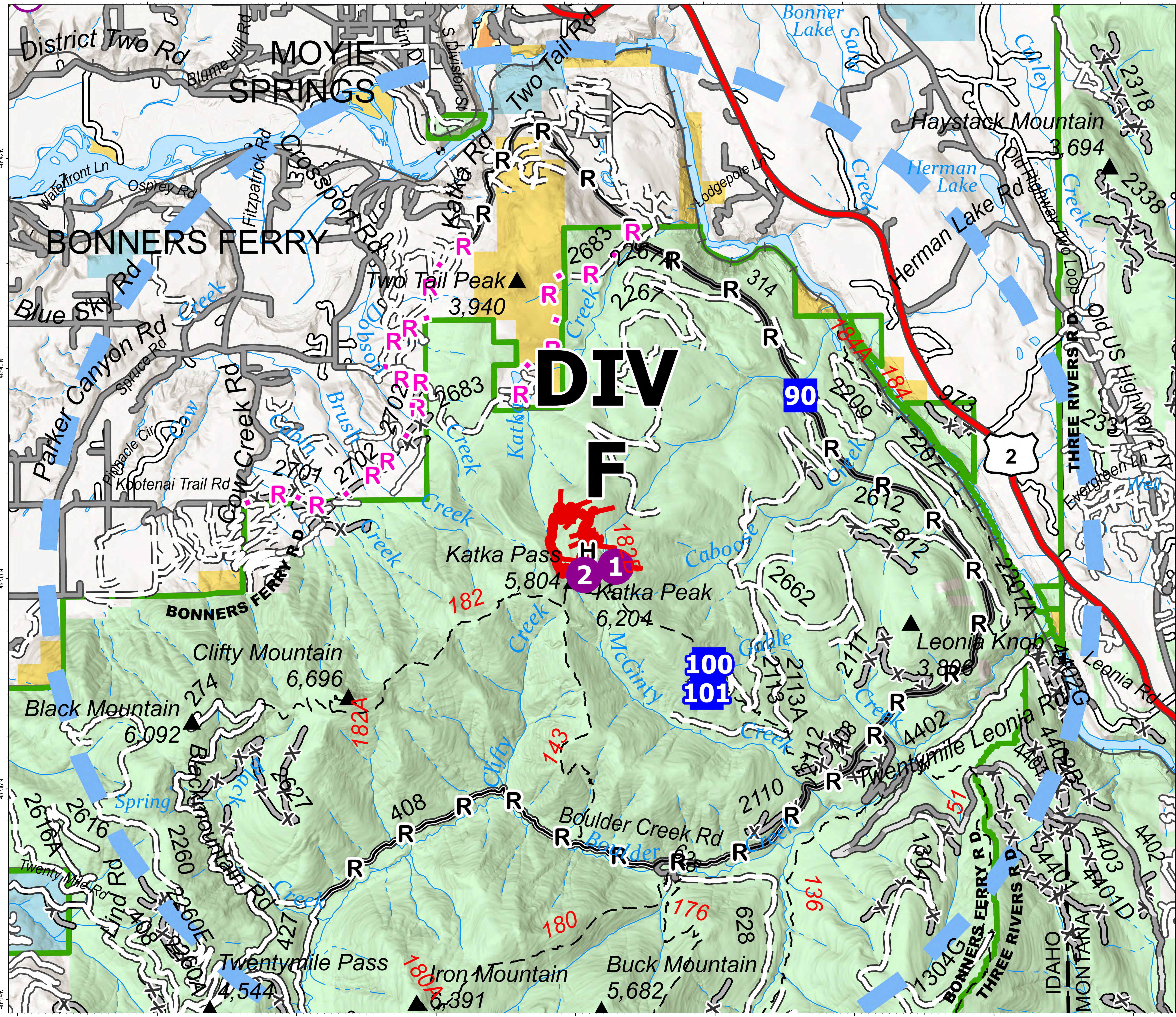
Briefing South

Kootenai River Complex
2022-IDIPF-000653

9/8/2022
15,640 acres at 9/7/22 2130
Acres from IR



- Helispot
- ⊕ Helibase
- Drop Point
- ▲ Camp
- H- Completed Hand Line
- R- Completed Road as Line
- R- Planned Road as Line
- Temporary Flight Restriction
- US Primary Route
- Paved Roads
- Dirt (Not Paved)
- Forest Service Land
- State Public Lands
- Bureau of Land Management Lands



NR Team 4
9/8/2022 0610
North American 1983 Datum, Lat/Long Grid