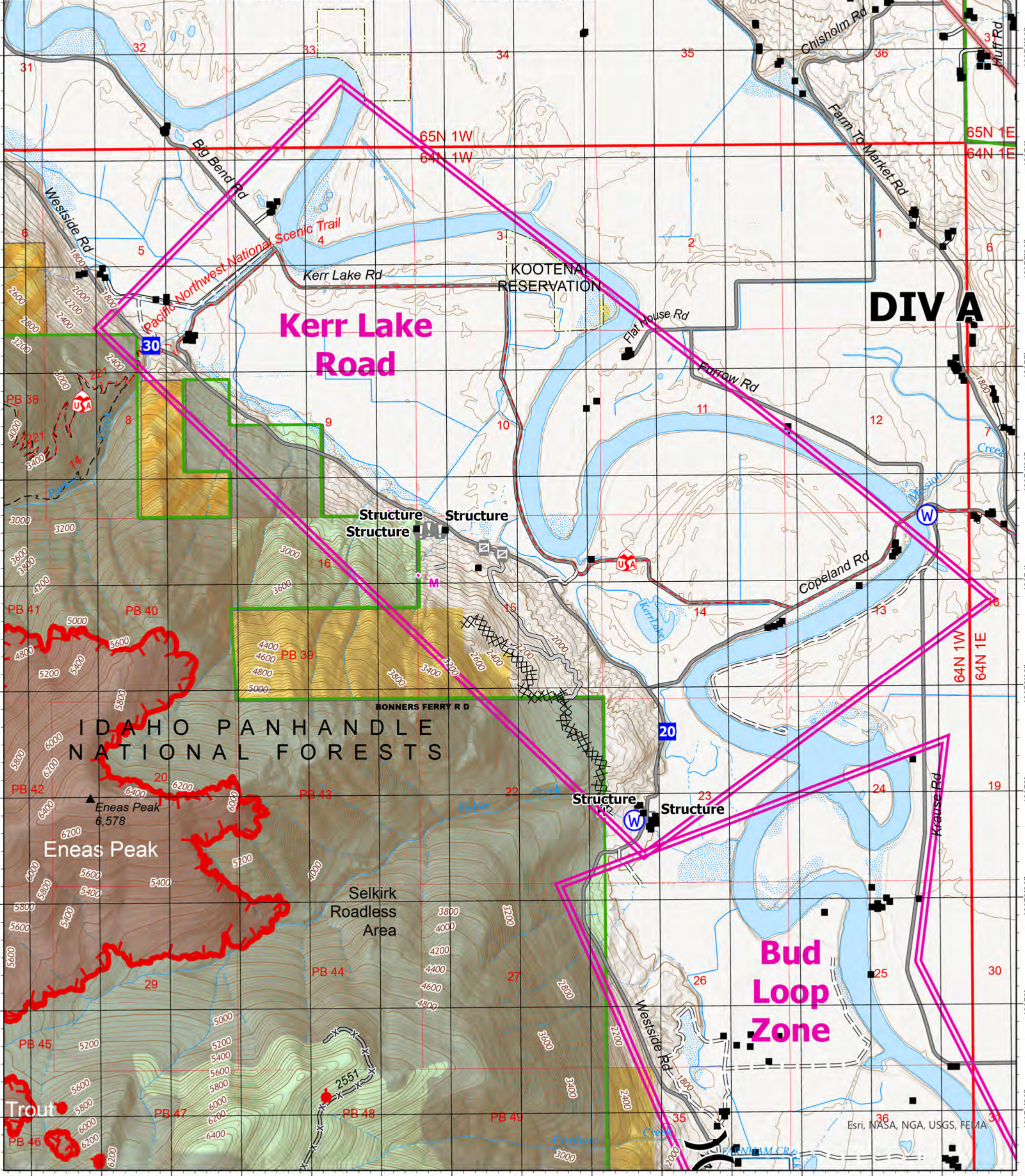
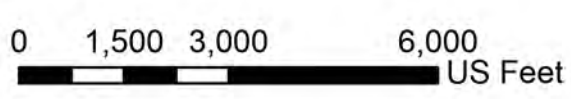


# Legend

- structure\_zones
  - Idaho\_Structures\_Points
  - Assignment Breaks**
  - ) Division Break
  - Logistics**
  - Drop Point
- Reference**
  - ! Value at Risk
  - Gate
  - Water**
  - Water Source
  - Completed Dozer Line
  - Completed Fuel Break
  - Completed Hand Line
- Planned Mixed Construction Line
  - Access or Improved Road
  - State Primary Route
  - Paved Roads
  - Dirt (Not Paved)
  - Bureau of Land Management Wilderness Study Area



**Kerr Lake Zone**  
 Kootenai River Complex  
 2022-IDIPF-000653  
 9/8/2022  
 15,640 acres at 9/7/22 2130  
 Acres from IR



NR Team 4  
 9/8/2022 0550  
 North American 1983 Datum.