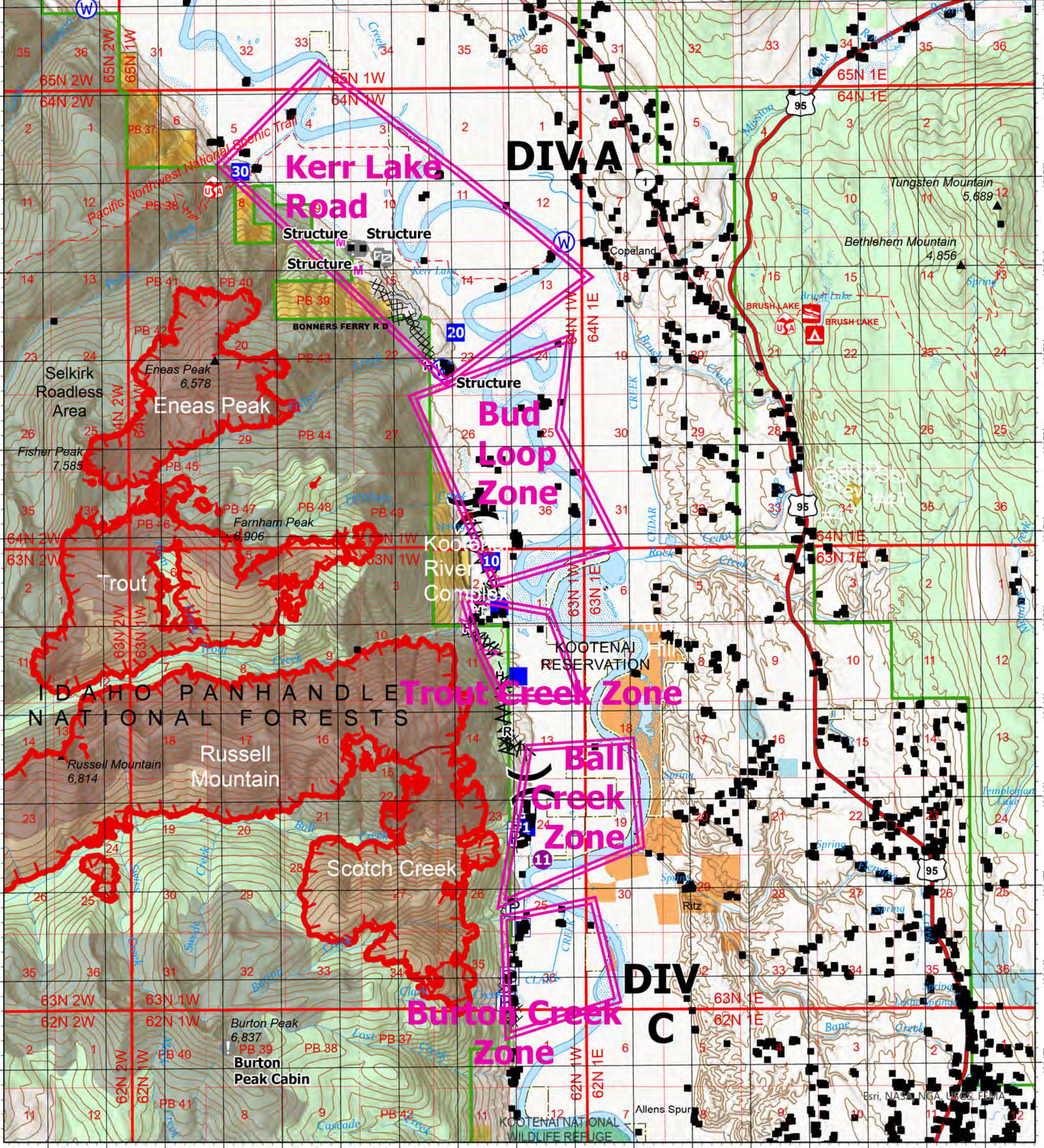


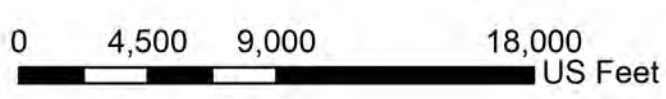
# Legend

- structure\_zones
  - Idaho\_Structures\_Points
  - Air Operations**
  - Helispot
  - Assignment Breaks**
  - ) Division Break
  - Logistics**
  - Drop Point
- 
- Reference**
  - Value at Risk
  - Gate
  - Water**
  - W Water Source
  - ××× Completed Dozer Line
  - ∧ Completed Fuel Break
  - H— Completed Hand Line
  - R— Completed Road as Line
  - ×× Planned Dozer Line
  - ∧ Planned Fuel Break
  - H · Planned Hand Line
  - M · Planned Mixed Construction Line
  - Access or Improved Road
  - US Primary Route
  - State Primary Route
  - Bureau of Land Management Wilderness Study Area



## Structure Zones

Kootenai River Complex  
 2022-IDIPF-000653  
 9/8/2022  
 15,640 acres at 9/7/22 2130  
 Acres from IR



NR Team 4  
 9/8/2022 0551  
 North American 1983 Datum.