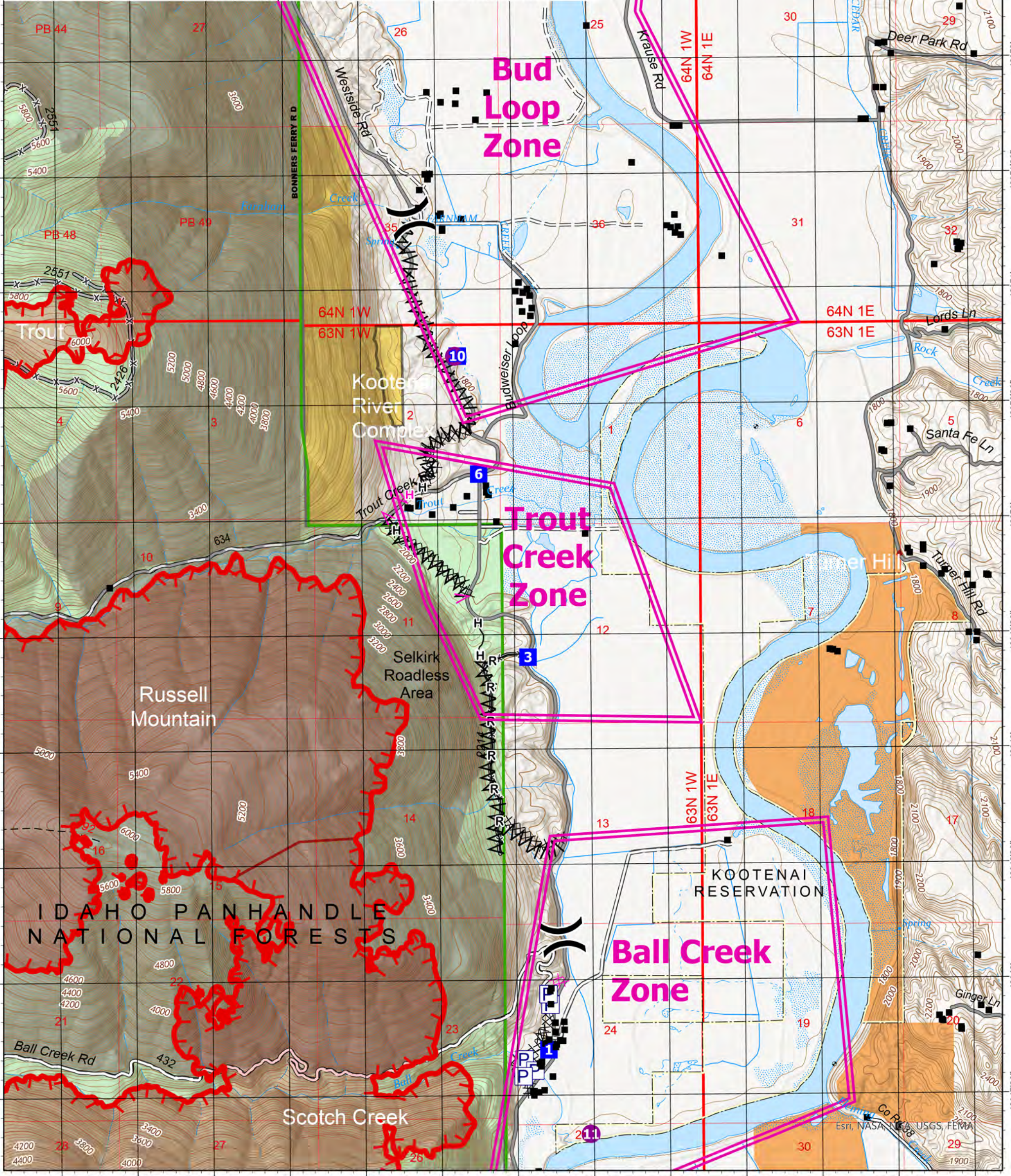


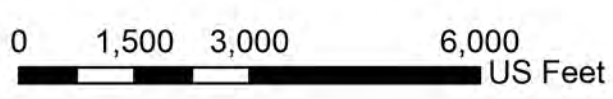
Legend

- structure_zones
- Idaho_Structures_Points
- Air Operations**
- Helispot
- Assignment Breaks**
-) (Division Break
- Logistics**
- Drop Point
- Reference**
- Value at Risk
- Water**
- W Water Source
- Completed Dozer Line
- Completed Fuel Break
- Completed Hand Line
- Completed Road as Line
- Planned Dozer Line
- Planned Fuel Break
- Planned Hand Line
- Paved Roads
- Dirt (Not Paved)



Trout Creek Zone

Kootenai River Complex
 2022-IDIPF-000653
 9/8/2022
 15,640 acres at 9/7/22 2130
 Acres from IR



NR Team 4
 9/8/2022 0551
 North American 1983 Datum.