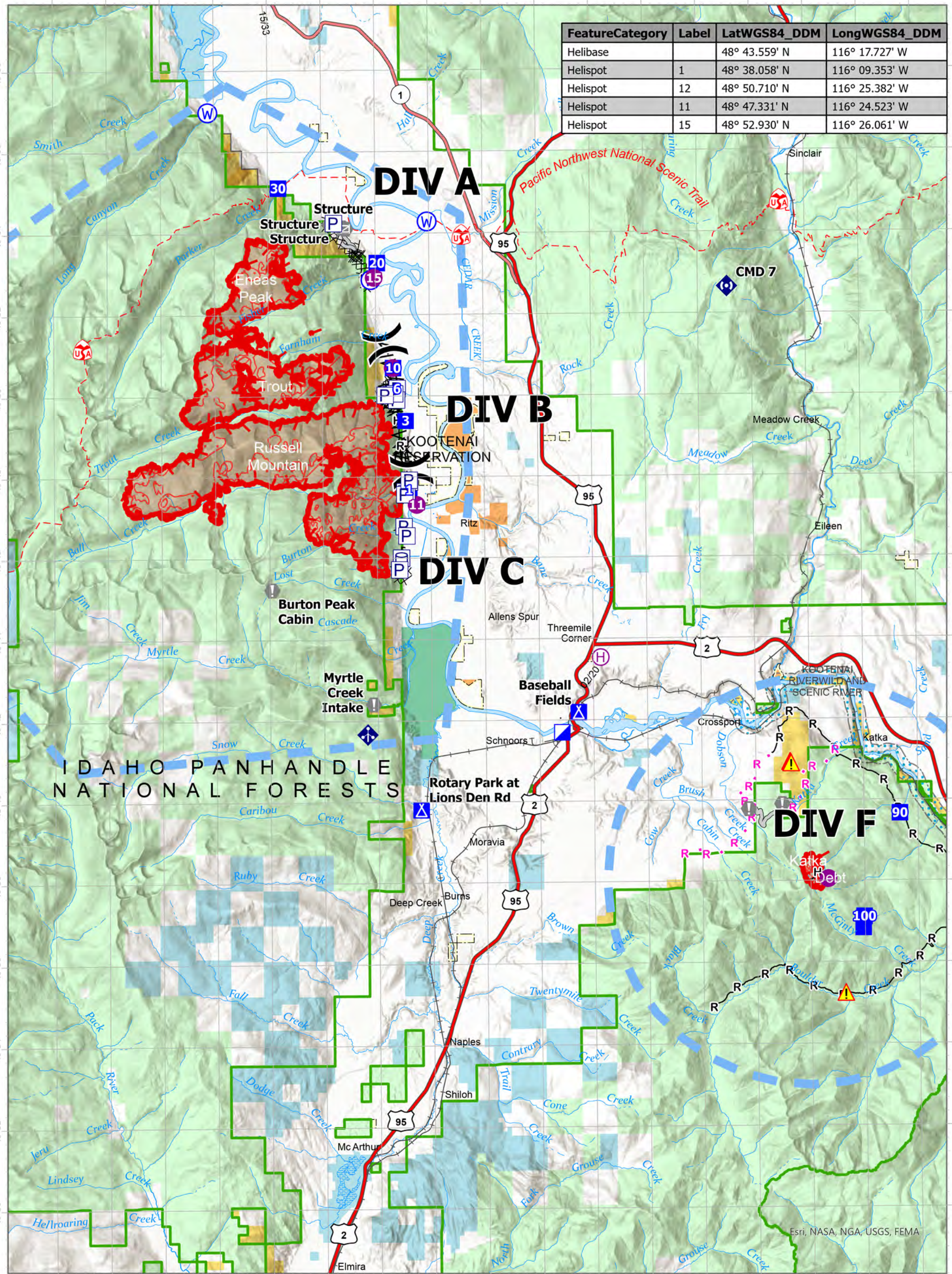


FeatureCategory	Label	LatWGS84_DDM	LongWGS84_DDM
Helibase		48° 43.559' N	116° 17.727' W
Helispot	1	48° 38.058' N	116° 09.353' W
Helispot	12	48° 50.710' N	116° 25.382' W
Helispot	11	48° 47.331' N	116° 24.523' W
Helispot	15	48° 52.930' N	116° 26.061' W



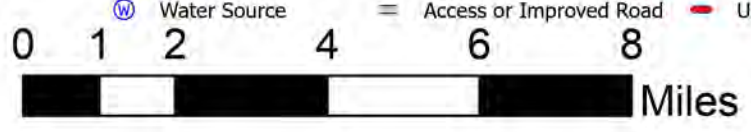
IDAHO PANHANDLE NATIONAL FORESTS

Air Ops

Kootenai River Complex
2022-IDIPF-000653
9/9/2022

17,376 acres at 9/8/22 2129
Acres from IR Acres from IR

- | | | | |
|-----------------------|---------------------|-------------------------|-------------------------------|
| Pump | Camp | Completed Dozer Line | Temporary Flight Restriction |
| Water Tank | Value at Risk | Completed Fuel Break | Wildfire Daily Fire Perimeter |
| Helispot | Gate | Completed Hand Line | IR Heat Perimeter |
| Helibase | Mobile Weather Unit | Completed Road as Line | IR Intense Heat |
| Division Break | Repeater | Planned Hand Line | IR Scattered Heat |
| Incident Command Post | Hazard | Planned Road as Line | US Primary Route |
| Drop Point | Water Source | Access or Improved Road | US Secondary Route |



NR Team 4
9/9/2022 0545
North American 1983 Datum, Lat/Long Grid