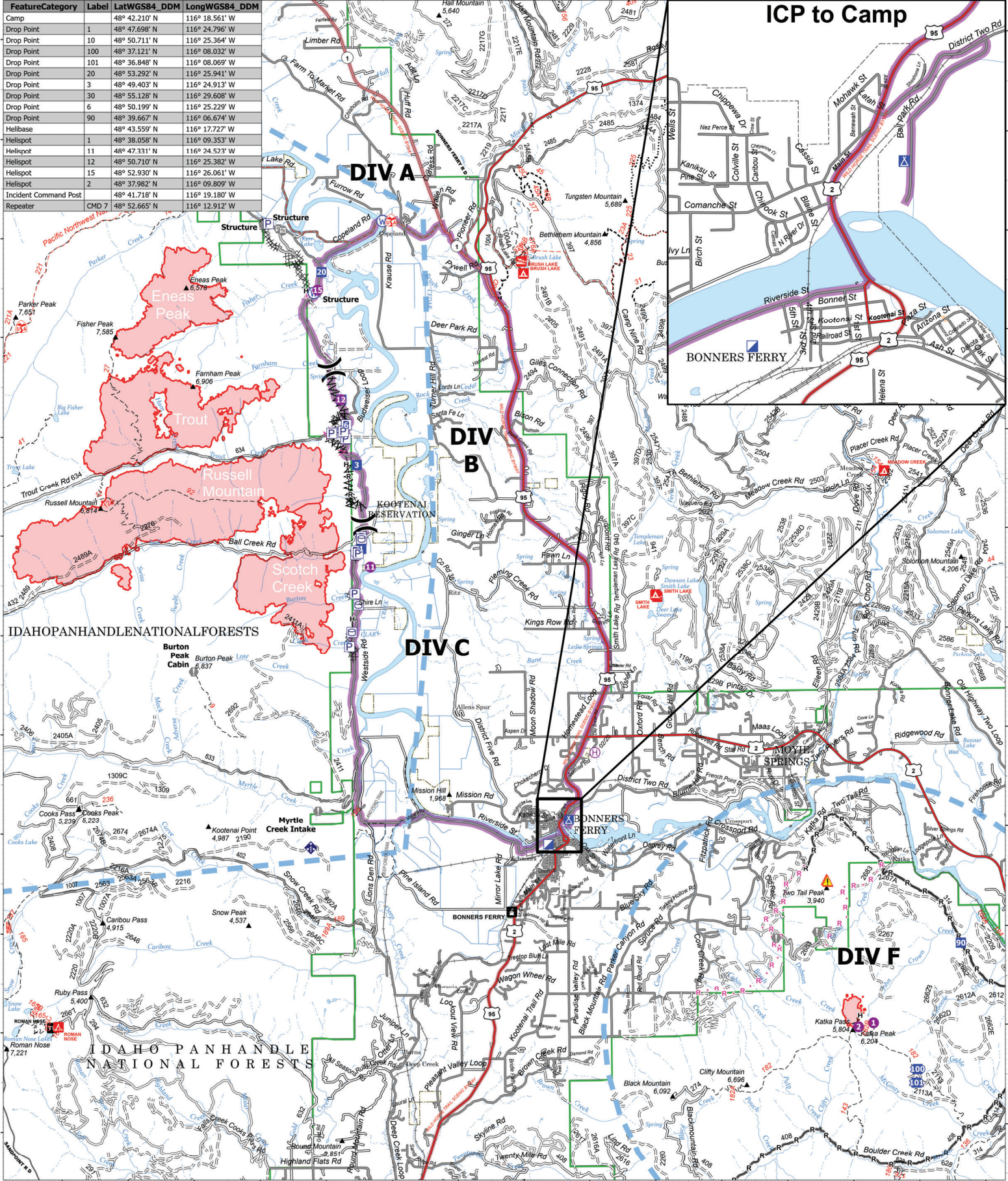
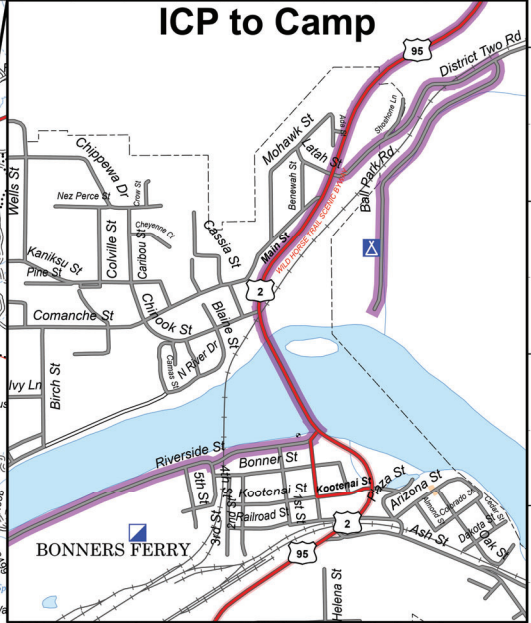


FeatureCategory	Label	LatWGS84_DDM	LongWGS84_DDM
Camp		48° 42.210' N	116° 18.561' W
Drop Point	1	48° 47.698' N	116° 24.796' W
Drop Point	10	48° 50.711' N	116° 25.364' W
Drop Point	100	48° 37.121' N	116° 08.032' W
Drop Point	101	48° 36.848' N	116° 08.069' W
Drop Point	20	48° 53.292' N	116° 25.941' W
Drop Point	3	48° 49.403' N	116° 24.913' W
Drop Point	30	48° 55.128' N	116° 29.608' W
Drop Point	6	48° 50.939' N	116° 25.229' W
Drop Point	90	48° 39.667' N	116° 06.674' W
Helibase		48° 43.559' N	116° 17.727' W
Helispot	1	48° 38.058' N	116° 09.353' W
Helispot	11	48° 47.331' N	116° 24.523' W
Helispot	12	48° 50.710' N	116° 25.382' W
Helispot	15	48° 52.930' N	116° 26.061' W
Helispot	2	48° 37.982' N	116° 09.809' W
Incident Command Post		48° 41.718' N	116° 19.180' W
Repeater	CMD 7	48° 52.665' N	116° 12.912' W

# ICP to Camp



**Transportation**  
 Kootenai River Complex  
 2022-IDIPF-000653  
 9/8/2022  
 15,640 acres at 9/7/22 2130  
 Acres from IR

- Travel Route
- Pump
- Water Tank
- Helispot
- Helibase
- Division Break
- Incident Command Post
- Drop Point
- Value at Risk
- Gate
- Mobile Weather Unit
- Repeater
- Hazard
- Water Source
- Completed Dozer Line
- Completed Fuel Break
- Completed Hand Line
- Completed Road as Line
- Planned Fuel Break
- Planned Hand Line
- Planned Road as Line
- Wildfire Daily Fire Perimeter
- US Primary Route
- US Secondary Route
- State Primary Route
- Paved Roads
- Dirt (Not Paved)
- Access or Improved Road
- Temporary Flight Restriction

**NORTHERN ROCKIES  
 INCIDENT MANAGEMENT TEAM**

9/8/2022 1943  
 North American 1983 Datum. Lat,Long Grid

