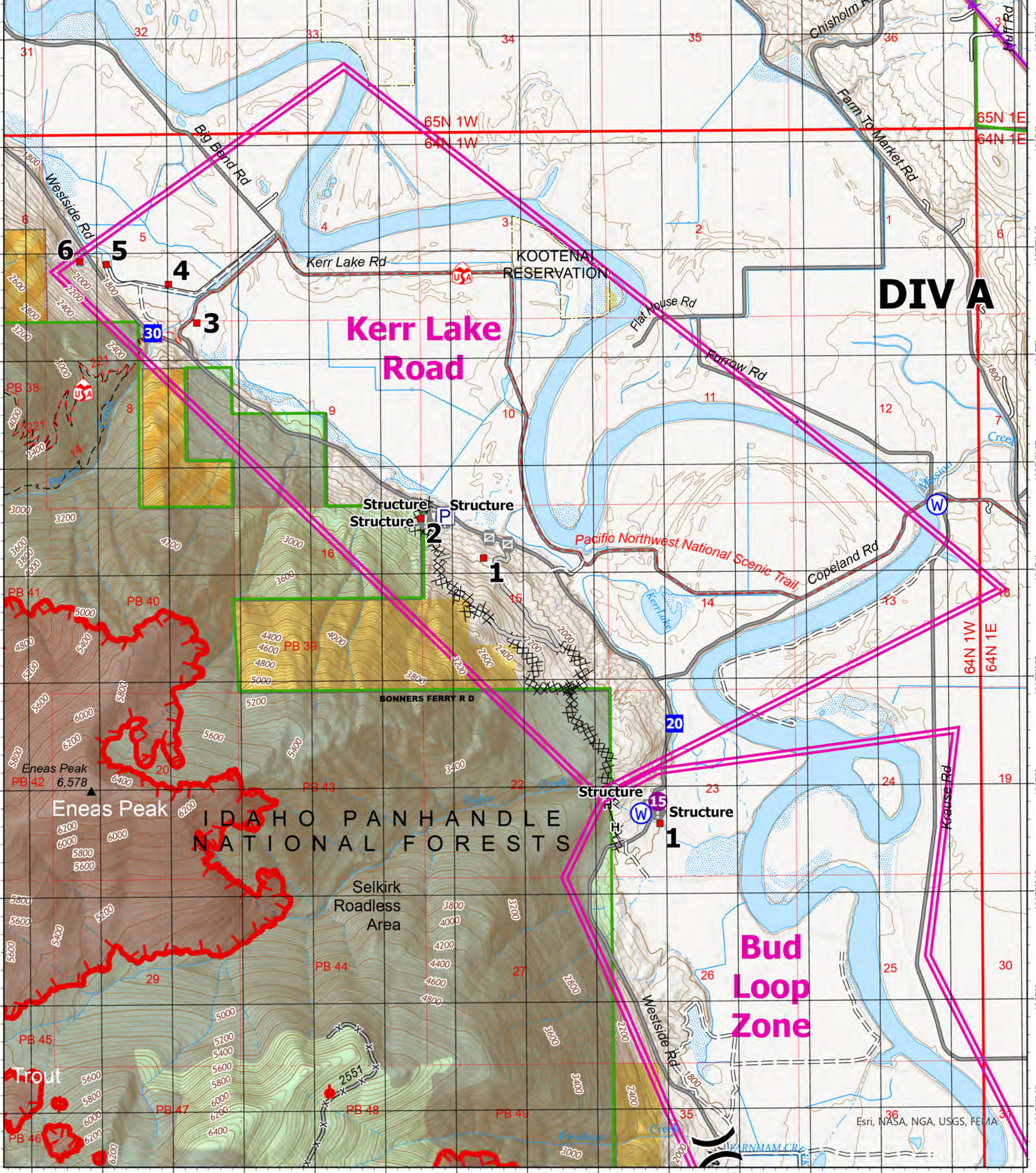
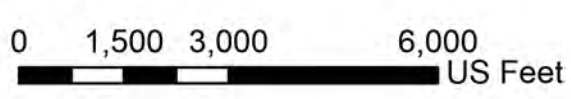


Legend

- structure_zones
 - Air Operations**
 - Helispot
 - Assignment Breaks**
 -) Division Break
 - Logistics**
 - Drop Point
- Reference**
 - ! Value at Risk
 - ☒ Gate
 - Water**
 - W Water Source
 - ⊗⊗ Completed Dozer Line
 - ⋈ Completed Fuel Break
 - Completed Hand Line
- Access or Improved Road
 - ▲▲ Aerial Hazard
 - State Primary Route
 - Paved Roads
 - Dirt (Not Paved)
 - Bureau of Land Management Wilderness Study Area
 - Structure_Assessment



Kerr Lake Zone
 Kootenai River Complex
 2022-IDIPF-000653
 9/10/2022
 18,464 acres at 9/9/22 2150
 Acres from IR



NR Team 4
 9/10/2022 0609
 North American 1983 Datum.